

# Trimmed just right for perfect eating



At **SAFEWAY** you pay only for the perfect-eating part...

## "U.S. CHOICE" Grade Steer Beef Safeway Standing Rib Roast

Before weighing your purchase, your Safeway meat man trims this roast as shown here. Every roast is "U.S.D.A. CHOICE" steer beef... the only grade of beef that Safeway sells. Every cut of Safeway Beef is correctly aged to bring out peak tenderness and flavor. The result is perfect-eating, deliciously tender and juicy meat. That's why we say, "Your complete eating satisfaction guaranteed... or your money cheerfully refunded."

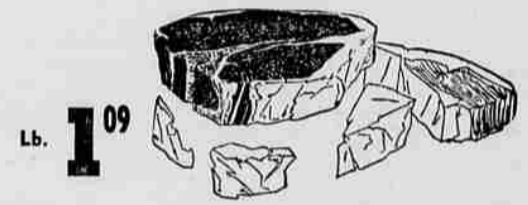
COMPARE THE TRIM  
COMPARE THE QUALITY

Lb. **79<sup>c</sup>**

Mayday <b>SALAD OIL</b> Quart Jar— <b>55<sup>c</sup></b>	Moonbeam <b>PUMPKIN</b> 3 No. 2 1/2 cans <b>25<sup>c</sup></b>	Chatham Cheddar <b>MILD CHEESE</b> 1-lb. <b>43<sup>c</sup></b>	Trick or Treat for Imps and Goblins <b>Roxbury Candy</b> Trick or Treat Mix 12-oz. pkg. <b>39<sup>c</sup></b> Trick or Treat Pops 11-oz. pkg. <b>39<sup>c</sup></b> Orange & Black Gum Drops 16-oz. <b>25<sup>c</sup></b> Orange & Black Jelly Beans 16-oz. <b>29<sup>c</sup></b> Goeltz Candy Corn 1-lb. pkg. <b>29<sup>c</sup></b>
---	---	---	--

## "U.S. CHOICE" GRADE STEER BEEF T-Bone Steaks

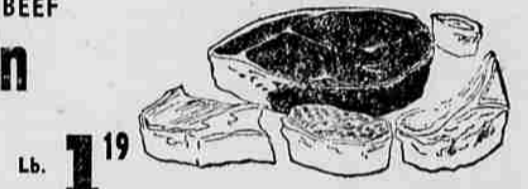
A T-Bone steak from Safeway is carefully trimmed, as shown here, before it goes on the scale. You do not pay for excess waste or tough tails that you cannot eat.



Lb. **1<sup>09</sup>**

## "U.S. CHOICE" GRADE STEER BEEF Boneless Sirloin

For the best sirloin steak you've ever tasted, be sure to try these tender top sirloins from Safeway. They're all meat, properly aged and trimmed.



Lb. **1<sup>19</sup>**

## Chuck Roast

Very little bone in proportion to good eating meat on this delicious Pot Roast. This price is for the blade cut. Arm cuts are slightly higher.

Lb. **57<sup>c</sup>**

## Tenderloin Steak

Meaty tenderloins, taken from "U.S.D.A. CHOICE" Beef loins as shown here. Every cut well trimmed of excess waste.

Lb. **1<sup>49</sup>**

<b>Ground Beef</b> 100% pure beef	lb.	<b>35<sup>c</sup></b>
<b>Bacon Squares</b> Square Cut	lb.	<b>35<sup>c</sup></b>
<b>Fish Sticks</b> Captain's Choice	10-oz. pkg.	<b>49<sup>c</sup></b>
<b>Fillet of Sole</b> Captain's Choice	1-lb. pkg.	<b>55<sup>c</sup></b>

**CANADIAN BACON**  
Sliced

Pork Loin Centers	8-oz. Pkg.	<b>65<sup>c</sup></b>
Sugar Cured		

<b>Cherub Milk</b> Evaporated	3 Tall Cans	<b>35<sup>c</sup></b>	<b>CANE SUGAR</b>	10-lb. pkg.	<b>93<sup>c</sup></b>
<b>EGGS</b> Cream of the Crop AA Large	Doz.	<b>49<sup>c</sup></b>	<b>VICTORIAS BRAND</b>		
<b>MACARONI</b> SUNRISE ELBOW	2 lb. pkg.	<b>29<sup>c</sup></b>	<b>Heinz CATSUP</b>	14 oz. bottle	<b>19<sup>c</sup></b>
<b>Cake Mixes</b> DUNCAN HINES	19 oz. pkg.	<b>3 for 85<sup>c</sup></b>	<b>Snowflake CRACKERS</b>	2 lb. pkg.	<b>43<sup>c</sup></b>
<b>MILK</b> CARNATION EVAPORATED	14 1/2 oz. tin	<b>2 for 25<sup>c</sup></b>	<b>Quaker OATS</b>	3 lb. pkg.	<b>39<sup>c</sup></b>
<b>TUNA</b> WHITE STAR GRATED	1/2 size tin	<b>29<sup>c</sup></b>	<b>Busy Baker CRACKERS</b>	2 lb. pkg.	<b>43<sup>c</sup></b>
<b>Mayonnaise</b> BEST FOODS	Qt.	<b>59<sup>c</sup></b>	<b>Cello POP CORN</b>	2 lb. pkg.	<b>39<sup>c</sup></b>
<b>TUNA</b> TORPEDO CHUNK	1/2 size tin	<b>25<sup>c</sup></b>			
<b>Mayonnaise</b> NUMADE	Qt.	<b>57<sup>c</sup></b>			

High Sugar Content—Luscious Ruby-red

## Grapefruit

From Florida's sunny fields—juicy and sweet meated.

**3 for 25<sup>c</sup>**

**CRISP APPLES**

Jonathans	Red Delicious
4 lb. bag <b>49<sup>c</sup></b>	4 lb. bag <b>59<sup>c</sup></b>

**CAULIFLOWER**

Snow White Heads

lb. **10<sup>c</sup>**

**RIPE AVOCADOS**

Large Size From Florida

Each **25<sup>c</sup>**

**JUICY ORANGES**

Sweet Valencias from California

Pound **15<sup>c</sup>**

**U.S. NO. 1 POTATOES**

Select Premium	Select Premium	Economy Size	Size 'A'
6 to 16-oz.	6 to 16-oz.	4 to 16-oz.	4 to 16-oz.
lb. <b>6<sup>c</sup></b>	10-lb. bag <b>59<sup>c</sup></b>	10-lb. sack <b>39<sup>c</sup></b>	25-lb. sack <b>97<sup>c</sup></b>

<b>Crushed Pineapple</b> LaLani 211 Tin	<b>17<sup>c</sup></b>	<b>American Cheese</b> Dutch Mill 2-lb. pkg.	<b>1.07</b>	<b>Smith Spaghetti</b> A Popular Favorite No. 1	<b>10<sup>c</sup></b>
<b>Crushed Pineapple</b> LaLani 211 Tin	<b>18<sup>c</sup></b>	<b>Cottage Cheese</b> Blossom Time Pt.	<b>29<sup>c</sup></b>	<b>Nu Made Mayonnaise</b> Pt. Jar	<b>41<sup>c</sup></b>
<b>Pineapple Juice</b> LaLani Hawaiian Tin	<b>10<sup>c</sup></b>	<b>Sweet Butter</b> Montrose Brand	Lb. Ctn. <b>69<sup>c</sup></b>	<b>Tea Garden Drips Syrup</b> 24-oz.	<b>39<sup>c</sup></b>
<b>Tea Garden Grape Juice</b> 24 oz.	<b>35<sup>c</sup></b>	<b>"A" Medium Eggs</b>	Doz. in Carton <b>41<sup>c</sup></b>	<b>Vino Paisano Wine</b> Galla Brand 1/2	<b>69<sup>c</sup></b>
<b>Light Globes</b> 60 W. 17c 75 W. 19c	<b>19<sup>c</sup></b>	<b>Snow Star Ice Cream</b> Qt. Ctn.	<b>45<sup>c</sup></b>	<b>Vino Paisano Wine</b> Galla Brand 1/2	<b>1.39</b>
<b>Parade Detergent</b> 19 oz. 25c 40 oz. 49c	<b>49<sup>c</sup></b>	<b>Snow Star Ice Cream</b> 1/2 Gal.	<b>89<sup>c</sup></b>	<b>Cal-Ore Tokay Wine</b> 1/2	<b>59<sup>c</sup></b>
<b>White Salt</b> Plain or Iodized	26-oz. <b>12<sup>c</sup></b>	<b>Nob Hill Coffee</b> 1-Lb. 102c 2-Lb. 203c	<b>203c</b>	<b>Wine</b> Honeywood Loganberry	1/2 <b>98<sup>c</sup></b>
<b>Kitchen Kraft Flour</b> 10 Lb. Bag	<b>98<sup>c</sup></b>	<b>Airway Coffee</b> 1-lb. 99c 2-Lb. 1.97	<b>1.97</b>	<b>Skylark Potato Bread</b> 1-lb. loaf	<b>23<sup>c</sup></b>
<b>Vanilla</b> Crown Colony Pure Extract	2-oz. <b>43<sup>c</sup></b>	<b>Edwards Coffee</b> 1-lb. 107c 2-Lb. 213c	<b>213c</b>	<b>Skylark Bread</b> Slenderway 1-lb. loaf	<b>25<sup>c</sup></b>
<b>Black Pepper</b> Crown Colony	4-oz. <b>43<sup>c</sup></b>	<b>Edwards Instant Coffee</b> 2-oz. Jar	<b>55<sup>c</sup></b>	<b>Dalewood Margarine</b> 1-lb. pkg.	<b>24<sup>c</sup></b>
<b>Pop. Food</b> Friskies Top Quality	Reg. Can <b>15<sup>c</sup></b>	<b>Edwards Instant Coffee</b> 4-oz. Jar	<b>1.09</b>	<b>Sunnybank Margarine</b> 1-lb.	<b>28<sup>c</sup></b>
<b>Beans</b> Taste Tells—Black Eyes	300 Can <b>10<sup>c</sup></b>	<b>Edwards Instant Coffee</b> 6-oz. Jar	<b>1.53</b>	<b>Holiday Fruit Cake</b> Sliced 4-oz. Bar pkg.	<b>15<sup>c</sup></b>
<b>Beans</b> Taste Tells—Pork & Beans	300 Can <b>10<sup>c</sup></b>	<b>Canterbury Tea Bags</b> 48-Bag Pkg.	<b>56<sup>c</sup></b>	<b>Holiday Fruit Cake</b> Ring 14-oz. Cake size	<b>49<sup>c</sup></b>
<b>Smith Chili Beans</b> Just Add Meat	300 Can <b>10<sup>c</sup></b>	<b>Bread</b> Mrs. Wright's White or Wheat	1 1/2 Lb. <b>26<sup>c</sup></b>	<b>Jane Arden Bui. Cookies</b> 5-oz.	<b>25<sup>c</sup></b>

<b>EM LUNCH MEAT</b> Product of Swift & Co. 12-oz. Can	<b>45<sup>c</sup></b>	<b>DIAL SOAP</b> For, Around the Clock Protection 2 Reg. Size Bars	<b>25<sup>c</sup></b>	<b>DIAL SOAP</b> America's Favorite Deodorant Soap 2 Bath Size Bars	<b>37<sup>c</sup></b>	<b>BAB-O CLEANSER</b> Cleans—Sanitizes—Deodorizes 16-oz. Can	<b>25<sup>c</sup></b>
--	-----------------------	--	-----------------------	---	-----------------------	--	-----------------------

<b>DENNISON CHILI</b> With Tasty Beans 16-oz. Can	<b>27<sup>c</sup></b>	<b>CRACKERJACKS</b> A Prize in Every Pkg. Reg. Pkg.	<b>5<sup>c</sup></b>	<b>HI-HO CRACKERS</b> Taste the Difference 1-Lb. Pkg.	<b>37<sup>c</sup></b>	<b>KRISPY SALTINES</b> Double Wax-Wrap for Freshness 1-Lb. Pkg.	<b>27<sup>c</sup></b>
---	-----------------------	---	----------------------	---	-----------------------	---	-----------------------

PRICES IN THIS AD ARE EFFECTIVE THRU SUNDAY, OCTOBER 24. WE RESERVE THE RIGHT TO LIMIT QUANTITIES. NO SALES TO DEALERS. PRICES IN THIS AD EFFECTIVE IN EUGENE AND JUNCTION CITY.

