

## First Art Fair in Eugene Scheduled for Saturday

Saturday marks Eugene's first annual art fair—the "Clothesline Art Show" being sponsored by Eugene Art Center. The exhibit will be open to the public from 10 a.m. to 4:30 p.m. in the park blocks opposite the Lane County Courthouse.

This year's show, which is free to the public, will feature paintings, photography and other art works by local amateur and professional artists. The chosen theme is entirely local, "Eugene as its portrait." Many articles will be for sale and those attending will have a chance to watch artists at work in watercolor, oil and other media.

Under the general management of William Porter, the exhibit is planned to allow all those

who may wish to show their work an opportunity to do so.

Anyone wishing to enter is invited to take his work to the park blocks before 10 a.m., with easels, card tables, clips or clothespins to hang his things.

There is a fifty-cent exhibit entry fee to cover costs of the show to the Art Center. A special section for juniors is planned.

Art Center members having charge of arrangements include: Mrs. L. J. Hawkes and Mrs. Weston Brockway, receiving exhibit material; Mrs. Charles Bayles, organization and rules; Mrs. Thomas Stockman, placement. Art Center members will be on hand to help those exhibiting, with Center President Mrs. E. W. Karl heading the group.

Although the show is not in any sense a contest, a jury will select about 50 works to be held by the Art Center, with permission of the artists, for show later at downtown business establishments.

Many such "open-air" shows have become popular in these Oregon communities: Portland, Salem, Coos Bay and in Lincoln County. The Art Center hopes to begin a similar tradition in Lane County.

Any person of any age who works in the various art fields, as either amateur or professional, is urged to exhibit his work, both as a boost to artistic activity here and as a chance to display his talents, perhaps for the first time.

## Around the Town

### TOWNSEND CLUB

Townsend Club will sponsor a public card party Thursday evening in the Woodmen of the World Hall, 8th and Lincoln Sts., play to begin at 8 p.m. A business meeting at 7:30 p.m. will precede the public event. Tables of canasta, "500" and pinocle will be in play. There will be no admission charge, but a silver offering will be taken. Refreshments will be served. The public is invited to attend.

### POSTAL CLERK PICNIC

The annual picnic for postal clerks and their families will be Sunday afternoon, July 25, at Armitage Park. Each family is requested to take a main dish, salad or dessert and its own table service and beverages.

### SANTA CLARA CHURCH MISSIONARY GROUP

Santa Clara Church of Christ Missionary Group will meet Thursday noon for a potluck luncheon at the home of Mrs. Florene Thurston, 4130 River Road. Co-hostesses will be Mrs. Elvin Hofeldt and Mrs. Ernest Davis. The lesson on "Gaining Strength in India" will be led by Mrs. James Rear. Anyone needing transportation may call Mrs. Rear at 5-3735. Members are asked to take their own table service.

### CAMP CLEAWOX BUSES

Camp Cleawox buses, bringing campers back from the second session at the coast camp, will arrive at McArthur Court Friday at 4 p.m., the Girl Scout office has announced.

## SOCIETY, WOMEN'S ORGANIZATIONS

ANN CONNELL, Society Editor



THE SUITS THAT are making the biggest fashion impression for fall are the box suit, the semi-fitted box suit, the bloused suit and the very tailored suit. The semi-fitted box suit at left by Nettie Rosenstein is in pale mauve lightweight katchouka wool. Suit has half belt, matching velvet collar and slim skirt. The flat mink stole is by Leo Ritter. Claire McCardell's three-piece costume (center) has brief fitted jacket in red and a gray silk blouse teamed with skirt in muted red plaid. Box jacket appears (right) in this suit by Jane Derby. Jacket is in brown, beige and black Lesur tweed with fringe buttons closing the front. Straight skirt is black.

## Tailored Suits Return For Fall Wardrobes

By GAILE DUGAS  
NEA Women's Editor

Most significant highlight of the fall suit picture is the return of the tailored suit, the man-inspired influence that's felt in coats as well.

This comeback of the tailleur is a near-paradox in that this is a year in which fashion is characterized by soft, easy lines and a true femininity. The tailleur, therefore, gets gentle handling. Designers have used pin-striped flannels and satin-faced broadcloth for this suit and particularly like showing it in black, brown and oxford gray.

The very lightweight suit (feather-weight tweed), box and semi-fitted box suit and the bloused suit create fashion fireworks this year. Nettie Rosenstein favors the boxy suit but gives it easy lines. Tweeds, important in all collections for coats, suits and dresses, are soft and light in this fall's suits. These are ideal for wear under coats and many have been designed with companion coats.

Very short jackets, cropped

just at the waistline, share top billing with the bloused jacket. Designer Claire McCardell likes this brief jacket set off by skirt in contrasting color. Blousing is always at the back with a smooth front and belt below the blousing. This is an easy, graceful line typical of fall fashions.

Shoulder lines in all fall suits are narrower and natural. This includes the tailleur, made feminine by hand-picked edges and shawl collars.

Cut-away suits that copy a man's dinner jacket, the corselet suit and the waistcoat suit are dressy for town. These follow a slim and molded silhouette, sometimes have gracefully pleated skirts.

Skirt lengths, incidentally, are about 14 inches in most collections. But generally, designers feel that American women will continue to wear the length most individually becoming to them. In any case, there's no drastic change.

## Ship Theme Used For Bridal Shower

Miss Joyce (Joy) Mae Holmes of Portland, daughter of Mr. and Mrs. W. F. Holmes of Eugene, was honored Monday evening with a bridal shower at the home of Mrs. B. M. Bond, 2861 Harris St. Miss Marvel Hart of Springfield was co-hostess.

Miss Holmes, a Eugene High School graduate, has lived in Portland for the last five years, where she has attended Portland University and has taught piano. She is engaged to Robert Hughitt, who is stationed with the United States Navy at Moffett Field, Calif.

The Bond home represented "Ship of Matrimony" for the shower party and was decorated with lifesavers, anchors, rope, and other items characteristic of a ship. Guests were assigned positions aboard ship as they arrived and were pinned with an anchor giving the title of that position such as captain, purser, mate, engineer, chief cook, etc.

The honored guest and her mother, Mrs. W. F. Holmes, and Mrs. Claude Nadeau, mother of Miss Holmes' fiance, each was presented with a corsage.

Refreshments were served and games were played in keeping with the ship theme. The guest then was presented with gifts from friends and relatives, some of whom were unable to attend. The gifts were presented by Dennis and Richard Bond, dressed in sailor suits. They are the grandsons of Mr. and Mrs. B. M. Bond and sons of Dr. and Mrs. B. Wellington Bond.

To conclude the evening, the honored guest was told to hunt in the floral arrangement, where she found a dozen long-stemmed four leafed clovers.

## Two Home From Kappa Convention in Canada

Mrs. Wayne Akers has returned to Eugene from attending the 40th biennial convention of Kappa Kappa Gamma fraternity at Jasper Park, Alberta, Canada. Mrs. Akers and Mrs. Alva Twoby, housemother at the chapter house on University of Oregon campus, were the two official delegates of Eugene Alumnae Assn. at the convention, which was June 24-July 1.

The Eugene Alumnae Assn. was one of four awarded honorable mention for general excellence for groups of less than 100 members.

Eighty-two college chapters in the United States and Canada and more than 100 alumnae groups sent delegates to the convention. The women's fraternity reportedly is chiefly concerned with the education of young women. Each year undergraduate scholarships, graduate fellowships and foreign study grants are made. This year's

foreign student grant will be awarded to a Korean woman to study in the United States.

Kappa Kappa Gamma Rehabilitation Services are maintained for aiding 300 local community needs by the organized alumnae groups. This is purely volunteer work and each group does what is needed most in its community.

## Moths Thrive On Soiled Fabrics

Clean fabrics are not found on a moth's menu. Dirty, dusty materials are the favorite foods of this well-known insect who thrives in the summer months. Fabrics which have been laundered do not whet Mr. Moth's appetite, and laundries today mothproof woolens such as blankets and pack them in cellophane or ploid film bags for, safe, clean summer storage.

## DR. MILES WEBBER OPTOMETRIST

38 E. Broadway — COMPLETE OPTICAL SERVICE — Ph. 4-9412  
 • HOURS 9-5 • BUDGET TERMS IF DESIRED  
 • Tues. Evenings By Appointment



## Fragger's Clearance Drastic Reductions

Reg. \$8.95 to \$19.95 REDUCED  
**DRESSES** 1/4 to 1/2  
 SHORTIE  
**COATS** Reg. \$25 to \$35 NOW **\$15.00**  
 BLOUSES Small Group  
 Sleeveless—Val. to \$4.98 Summer Skirts  
 NOW ONLY 1.50 AND 2.00 Broken Sizes & Styles 1/2 Price

• Many other items reduced to clear. • USE OUR EASY LAY-AWAY PLAN  
 • All sales Final

## FRAGER'S

829 WILLAMETTE Open Friday Night

## LOOK THIS WAY LADIES

(AND Gentlemen Will)

PLAID plus PIQUE



the shirt off his back!

Bright plaid cotton gingham, smartly set off with frothy white pique collar and French cuffs. Your audience will acclaim this smart Lady Manhattan combination for work or leisure. And your Lady Manhattan shirt acts so well because it's tailored with all the masculine details that go into a fine Manhattan man's shirt. Put a couple of these classic fashion stars in your wardrobe... this very day!



\$5.00 from

Baxter & Henning STORE FOR MEN

## Smith's Annual July CLEARANCE is in full swing

If you are interested in real buys, you will find them in...

- Coats
- Suits
- Blouses
- Dresses

• New spring and summer merchandise. Wearable for months to come. Broken size ranges, one of a kind and discontinued styles bring savings in many instances up to—

# 50%

• Check these exceptional bargains now... • A deposit will hold them on lay-away for you.

Smith's FOR FASHION - FIT - QUALITY

82 W. Broadway Phone 4-9422



SMALL PARTY—or a little more so, you'll naturally have that party-line in Warner's\* padded "Merry Widow," a light elastic "A Lure" #1084, in white. A and B cups. \$5.95.

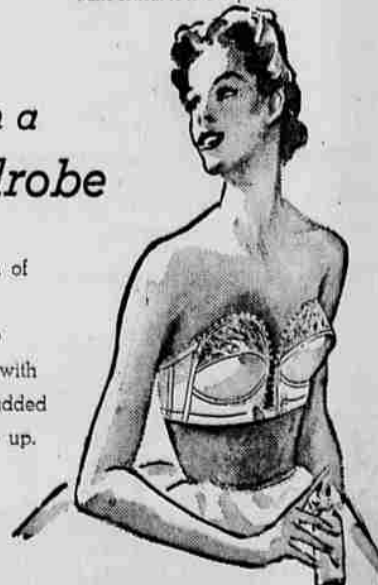


SLIP AWAY—for the "sheerest" summer yet—in the long-line "Merry Widow" half-br #1388 in white cotton and nylon sheer. A to C cup. \$5.95.

REAL COOL—Warner's\* "Million Dollar Hold-Up"—the softly cushioned wire breathes with you—fitting comfort all day long. #2059, in white cotton. A to C cup. \$3.50.

## You're a pretty cool customer with a Warner's\* Strapless Wardrobe

Yes, you—the girl well-fitted for summer in a whole collection of Warner's\* strapless bras. It's the plunging "Million Dollar Hold-Up," when cottons take a dare-devil dip. And the "Merry Widow" long-line for sheer fun under summer sheers—with nary a trace of a midriff. For that party lift, it's Warner's\* padded "Merry Widow"—for added attraction no matter HOW you size up.



# The Broadway

30 and 36 Broadway