

Secrecy Dropped Because of CD Importance

# Army Reveals Plans for Germ War Defense

WASHINGTON (NEA) — The U. S. Army has developed an elaborate plan for the defense of American troops against possible germ warfare.

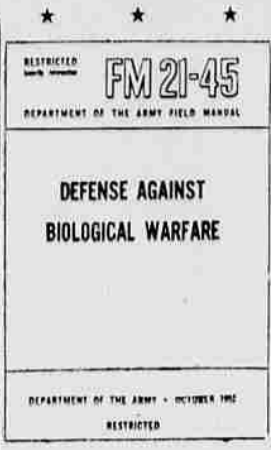
It anticipates that enemy germ weapons will be primarily directed at inducing respiratory diseases in the men.

Secondary targets will be meat-producing animals and all plant foods in an effort to starve the country to its knees.

Spray tanks on aircraft and aerial bombs are considered the most likely means of delivery, although defenses are planned for germs sent by rockets, missiles and artillery and mortar shells.

Intensive study on defenses against possible biological warfare, which have been carried on by the Air Force and Navy with the Army since World War II, have led to the conclusion that the primary use by the enemy of germs will be against the civilian population. The Army experts believe that tactical biological warfare, alone, against troops, would not be decisive.

This information is revealed for the first time as a result of the White House order eliminating the security classification "restricted." The facts are contained in an Army field manual called "Defense Against Biological Warfare." The introduction states: "The purpose of this manual is to provide information for use



in biological warfare defense training. It is intended also to serve as a guide to all echelons in determining responsibilities in the various phases of this field, especially in connection with staff level relationships." Up until now the whole subject of biological warfare has

been one of the most closely guarded areas of secrecy in the services. Part of the reason for permitting the manual to lose its security, along with a mass of other previously restricted material and information, is because of its civil defense importance.

"Restricted" was the lowest security classification after "confidential," "secret" and "top secret," in that order. In eliminating the "restricted" classification the White House felt that the designation had been abused and that regulations on the remaining categories could be observed better.

The manual gives the following limitation of germs as a tactical weapon:

"The incubation or lag period before the appearance of disease symptoms is a disadvantage since usually neither side in a changing situation can determine what will happen or be needed several days in advance. The epidemic nature or the retroactivity of some agents might make them dangerous either for the user or for adjacent friendly personnel."

The explosive munition shell is not considered a very satisfactory means of delivering germs

"The greater the explosive force which is required to rupture the munition, the finer the dispersion of the agent; but also the result is greater destruction of the agent by heat, pressure, and the toxic gases simultaneously produced," the manual explains.

Other difficulty on germ weapons are said to be difficulty of storage, danger of transportation, the natural or acquired immunity of the persons under attack, and the availability of vaccines and antibiotics.

"Modern methods of control would probably prevent large-scale epidemics," the manual claims.

The Army Chemical Corps has been given over-all responsibility for carrying out details of defense against germ weapon attacks. Officers and non-coms trained in the art are now in every Army unit, down to the lowest levels.

The Army Medical Service is charged with providing and operating special laboratories in the field capable of quick analysis of evidence of germ attack.

The key factor in an adequate defense against germ warfare, the manual warns, is the individ-

ual's maintenance of a very high standard of personal hygiene. Also, it says, "extra consideration and importance must be given to all phases of unit health, such as supervision of the kitchen, latrine, housing of personnel and insect and rodent control."

In the event of actual germ attack on troops the immediate defense would be very similar to that prepared for gas warfare. Protective clothing, masks and shelters will be provided. In addition, the book says, "first aid should include extra care of cuts and abrasions and food and water should be used only from approved military sources."

The Army has decided that germs are especially well suited for enemy sabotage. The manual says:

"The greatest effects from sabotage would be on production and on morale of an inadequately informed population. It is a good sabotage weapon because of the ease of manufacture in small quantities, ease of concealment, possible disguise as legitimate laboratory procedure and susceptibility of route of entry into the target (that is, foodstuffs, beverages, drugs, cosmetics, fore-

ed air ventilation systems and subways)."

JAPS TO GET ISLANDS

TOKYO (AP)—The Japanese government announced Friday that the United States will return the Amami Oshima islands to Japan on Christmas day. The islands lie midway between the southernmost Japanese island of Kyushu and Okinawa.

**Complete—  
Moving - Storage  
Service**

**Eugene Transfer  
& Storage**  
260 Ferry St. Dial 5-0151

**GUARANTEED SERVICE!**  
• Refrigerators  
• Freezers  
• Ranges  
**APPLIANCE CENTER**  
10 W 10th Call 4-6297

**VISIT OUR  
LENOX ROOM**  
Largest single display of Lenox on the Pacific Coast.  
**HOFFMANS**  
873 Willamette

**Royal Host  
CALIFORNIA  
Sherry**

**PORT MUSCATEL  
SHERRY TOKAY**  
4/5 QT. 1/2 GAL.  
**80¢** \$1.80  
EAST SIDE WHIPPY  
1004 CALIFORNIA

**REGISTER-GUARD WANT ADS GET RESULTS**

there are times when..

everyone needs protection! When it comes to fire protection there's no better safeguard than a policy from the Farmers' Mutual Insurance Company of Enumclaw! Since 1898 this reliable company has been writing fire insurance for thousands of Northwest homes—and many times at unusual savings! Ask your Mutual of Enumclaw agent today about this fine fire protection.



**G. E. Blanchard**  
1520 E. Main  
Springfield, Oregon

**Harry C. Mitchell**  
111 Owosso Drive  
Eugene, Oregon

More Beautiful. More Powerful - Offering even Greater Value than before



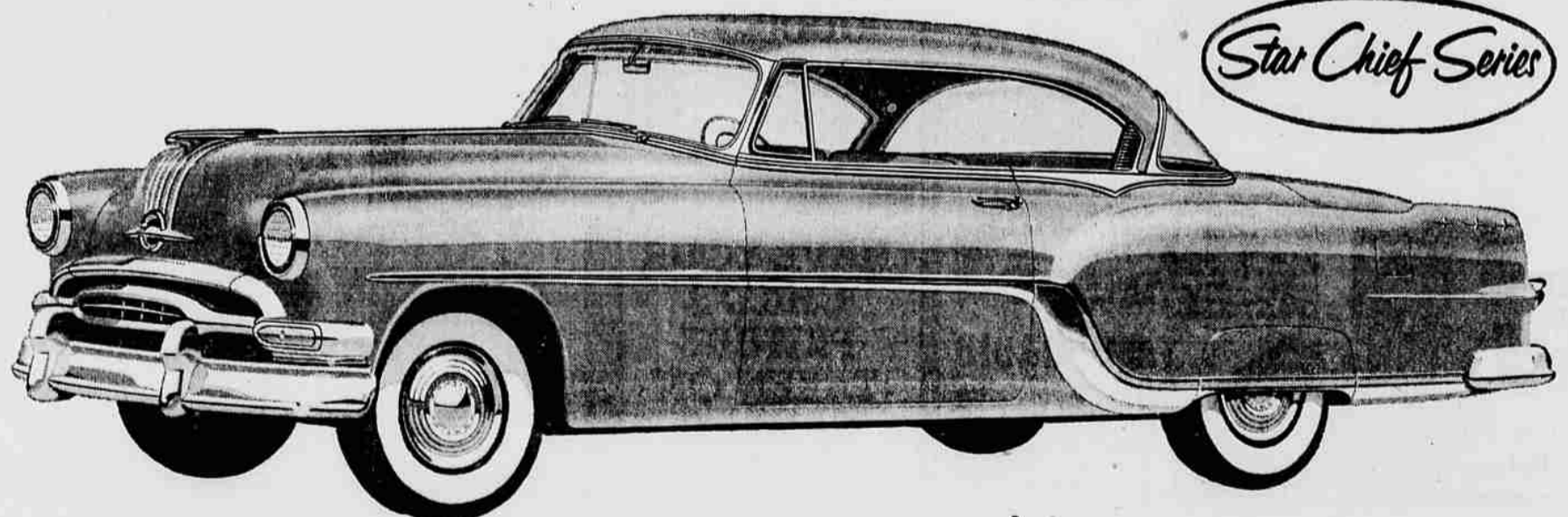
Still near as ever to the lowest in cost, General Motors lowest priced eight now takes an even higher rank for quality. Styling is new, brilliant, colorful, inside and out. And this Chieftain matches its new splendor with exciting new driving pleasure. New power added to the Pontiac engine, the best proved in its field, assures heightened thrills in every phase of motoring. More-

over, the Chieftain, like the Star Chief, offers the optional choice, at additional cost, of Dual-Range Hydraulic, Power Steering, Power Brakes, Electric Window Lifts and Air-Conditioning. Come and see these finer Chieftain Sixes and Eights and the completely new Star Chief. You'll find that again in 1954, dollar for dollar—you can't beat a Pontiac!



# Two Great New PONTIACS

Are Now on Display!



Most Distinguished. Most Luxurious Car ever Offered at Pontiac prices

In this magnificent car Pontiac presents not only a completely new line of the biggest, most powerful Pontiacs ever built, but also an entirely new type of automobile—the first genuine luxury car in Pontiac's low price range. Join the throngs at Pontiac showrooms and learn just what exciting news this is. Look at the long, low, aristocratic new styling made possible by the Star Chief's greater length. View the

regal luxury of the new color-matched, custom interiors—the finest sight in any price field. Come in for a ride behind the mightiest Pontiac power plant in Pontiac history, and then note this remarkable fact: Despite length, looks and luxury comparable to the finest, the Star Chief is way down the scale in price. It is America's happiest union of quality and value. Come in and prove it today!

- BIGGEST PONTIAC EVER BUILT—814 INCHES LONG
- MAGNIFICENT NEW BEAUTY, INSIDE AND OUT
- NEW, CUSTOM-STYLED INTERIORS—NEW EXTERIOR COLORS
- MOST POWERFUL PONTIAC EVER BUILT
- NEW ROADABILITY AND DRIVING EASE
- NEW, GREATLY INCREASED CROSS-COUNTRY LUGGAGE ROOM

**Double Proof that Dollar for Dollar you can't beat a Pontiac**

- |  |  |   |
|--|--|---|
| <p><b>PARMENTER PONTIAC CO.</b><br/>837 Pearl St. Eugene, Oregon</p> | <p><b>MILLS MOTOR CO.</b><br/>7th &amp; Ivy Junction City, Oreg.</p> | <p><b>ALBEE PONTIAC</b><br/>24 N. 9th Cottage Grove, Oregon</p> |
|--|--|---|