



YELLOW FLOWERS in an old bean pot, with a strip of well-weathered driftwood, comprise the ingredients for the exotic arrangement above. Mums are combined with velvety cock's comb. The long spire shooting sidewise is extreme — but balanced by the low-hanging driftwood to form a distinctive arrangement. The graceful bouquet below has a heart of rich-colored maroon cock's comb and spirals of green Belle of Ireland. The bean pot serves again. Both are part of the "Flowers Unlimited" display at Lane County Fair.

Register-Guard photo, Willshire engrav.



ARRANGEMENT of yellow mums is designed to complement architecture and modern furnishings at Lane County Fair. Long stemmed and wide — and sparingly — to create the light, airy arrangement most appropriate and attractive for the setting.

Clothes Line Posts \$13.50 Per Set and 11th Ph. 4-8063 Free Delivery

NEW GERRY
Some new lamps. Not lamps, but new lines. The lamps are in Kit-Kat. The lamps are of brass, and very sturdy are of Nubby parchment or yarn. All of the number are designed and made. They are priced from \$1.00 to \$2.00.

out here on West where parking is no problem. All kinds of furniture, lamps, and the sort of things you need. NEIL & GERRY'S, 11th and 12th, Eugene, Ore. NEIL & GERRY'S, 11th and 12th, Eugene, Ore.

Maintenance Loans Hit Record High For Half of 1952

Home maintenance and repair loans insured by the Federal Housing Administration under its Title I program leaped to a record high of \$450,390,150 for the first six months of 1952. This compares to \$304,947,330 for a similar period in 1951, the previous record year. The volume of Title I loans is taken as an indication of the total amount of money spent annually for home modernization. This is estimated at \$3 billion for last year. The FHA insures loans for both materials and labor. For example, money can be borrowed to buy asphalt shingles for reroofing and to pay for application.

COMMITMENTS
We Get Them Through for the **MAXIMUM** **M. S. CHRISTIANSON**
Ph. 4-6279 Customer Parking

Cut Roses Can Be Kept By Storing

Many rose lovers will admit that Mother Nature's time schedule doesn't always fit in with their own. Spectacular displays of roses often seem to come too early for the flower show or special event selected for exhibits from the garden.

Research has now come up with some practical suggestions to make the storing of roses more effective and reliable for home gardeners. Experiments demonstrate that under the right conditions, flowers can be kept for almost two weeks and still compare favorably with fresh cut flowers.

The three important factors in storing roses are temperature, moisture and sugar content. A high temperature will speed the normal functions of the rose and push it quickly past its peak. Recent experiments showed that cut roses last best at a constant temperature of 31 degrees. In the average home refrigerator, roses should be kept on the first shelf below the freezing unit where the temperature will be closest to the established mean.

Water is second in importance in storing roses. To prevent transpiration, (evaporation of water from the leaves and petals) roses should be packed in containers that are moisture proof and air tight. Storing with the stems out of water further slows down the plant cycle and keeps the flowers from opening. Plunging the stems into water will speed the opening of the flowers and the dropping of the petals.

Sugar is the third factor in effective rose storage. The greater the quantity of sugar present in the rose when it is cut, the better its lasting qualities. Roses should be cut on a bright day in the afternoon when the sugar supply has been built to its highest level.

Containers for storing cut roses are easily improvised. It should be kept in mind that the container must be moisture proof and air tight. Mailing tubes coated with paraffin, cellophane containers, potato chip cans and deep freeze wrappers are all materials that can be used successfully.

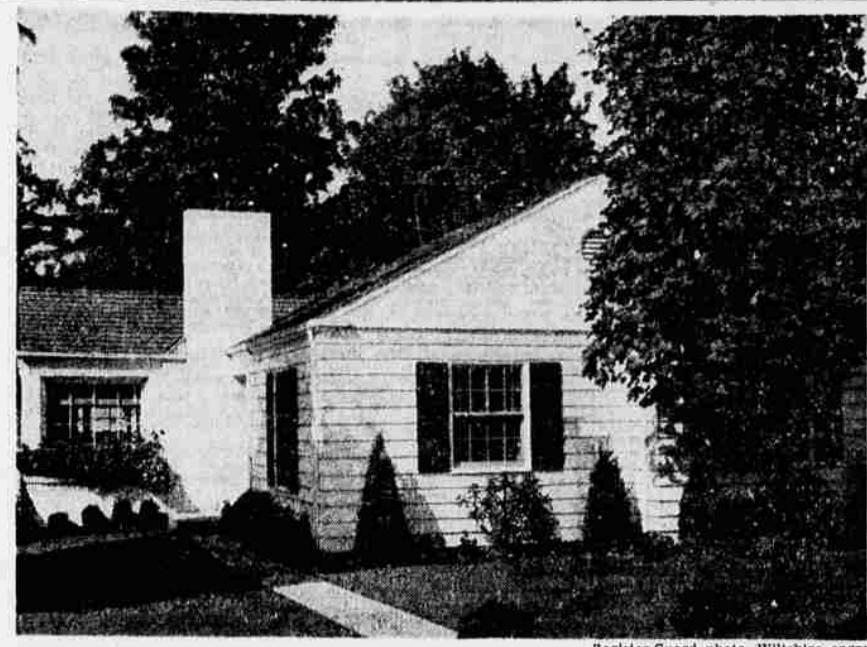
Cut roses in the afternoon just as the first petals are beginning to unfold, and without placing them in water, place them in the storage container. Put the container in the refrigerator and keep the temperature as close to 31 degrees as possible.

When removing the flowers from storage, cut about an inch off the stem ends and place them in warm water to speed up the resumption of normal functions. While the roses are still in warm water, place the container in a cool place for six to eight hours to condition the flowers.

Finally, do not try to store roses in a deep freeze unit. While this will preserve the flowers to all outward appearances, they will disintegrate as soon as they are handled in the open air.

HOME and GARDEN

By HELEN LONG



Register-Guard photo, Willshire engrav.

Plan Features Living Area in the Rear



Here's a long house full of jogs and ells, planned to put the living quarters back where they belong — where it's quiet. Living room, dining room, breakfast nook, and kitchen are down the walk to the rear, while the bedrooms are up front toward the street. Thus the bedrooms are barriers from daytime noises, and, shut off by the hallway, afford privacy at all hours.

Around all the house except the living-room ell and dining room, the walls are of 10-inch siding, capped in front with flush siding and painted white. Living room and dining-room walls are of white-painted brick. Rustic-looking hand-split shakes cover the roof.

A look at the floor plans will show the purpose of the jogs and the ells. See how easily the basement, kitchen, bathroom, and bedrooms can be reached without passing through living or dining rooms — how near the main and back entrances are to each other for circulation. There's abundant closet space where it's needed. The breakfast nook serves as a passage pantry from the dining room to the kitchen, where tiled counters, plenty of built-in cupboard space and step-saving planning make meal-fixing a pleasure.

The completely finished basement has a handy outside entrance, separate from the one in the kitchen. Downstairs there are a recreation room, laundry, maid's room, shower bath, and large furnace room.

The home is one of a series developed by Better Homes & Gardens magazine, Des Moines. It is plan No. 1103.

Old Dwellings Change Hands Fast

About 850,000 old houses were transferred from one owner to another during the first six months of 1952, according to the Federal Reserve Board.

Transfers were "somewhat more numerous than in either half of 1951 and about the same as in the near-record second half of 1950," the board said.

This statement was issued after the board had noted reports from other sources to the effect that properties are selling more slowly now than in previous months and that prices of old houses have declined.

Turning its attention to new construction, the board said it expects sales of new homes to continue at a high level or increase. It pointed out that credit regulations have been eased while personal incomes remain high.

The board also reported that mortgages are growing bigger. The average loan, for both old and new houses, was said to have risen considerably even though the volume of mortgages insured by the Federal Housing Administration and the Veterans Administration has declined.

For reconditioning old homes, two basic building materials—lumber and asphalt shingles—are in good supply. The Federal Reserve Board said stocks of lumber reached a post-war high at the beginning of 1952 and have not changed much since that time.

Asphalt roofing supply and demand has built up to the point where this one type of material supplies close to 90 percent of all the roofing required annually in the United States. For older homes, asphalt shingles are suited to economical reroofing work, adding new color and fire-resistance as well as waterproofing.

Not Steel—But Street

Bob Street is the man responsible for the remodeling work done on the Bettis home on Mill St., featured in last Sunday's Home and Garden section. An error in the story listed him as Steel instead of Street.

NEEDS TIGHT COVER

Paint should never be left in an uncovered can overnight as it contains volatile ingredients which will evaporate.

Use Different Shingle Colors On High and Low Roof Levels

If you have a house with more than one roof section and if the sections are at different levels, Howard Ketcham, color and design engineer, has some suggestions that might help to make your home more attractive.

Ketcham does it with color. "Use different shades of the same basic asphalt shingle color on different roof levels," he says. "Assuming that a house has two roof levels, it's possible to make the two seem more nearly the same or it's possible to accentuate the difference. You can call attention to the difference or not, depending upon how good-looking this architectural feature is."

"First, take a case where you want to minimize the difference in height. The thing to do would be to select a dark asphalt shingle blend for the higher level and then to use a lighter shade of the same color on the lower level.

"The dark shade would make the high roof seem lower, and the lighter shade would make the low roof seem higher. That would create a visual illusion to bring the two together.

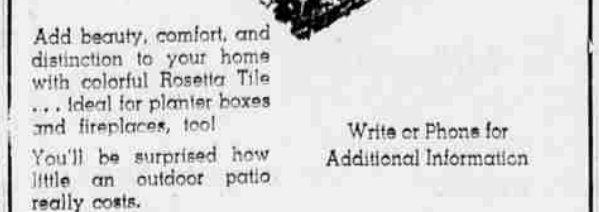
"You might use a dark blue-green blend and a light blue-green. Another pleasing combination would be pink-gray and a tint of the same blend.

"Reverse the color combinations for the opposite case, where you want to make the difference in height more pronounced. Use the lighter one on top and the darker below.

"In that situation, the visual effect would be reversed. The high part would seem higher, and the low part lower."

A patio for your home

BY GRAYSTONE



Add beauty, comfort, and distinction to your home with colorful Rosetta Tile... Ideal for planter boxes and fireplaces, too!

You'll be surprised how little an outdoor patio really costs.

Write or Phone for Additional Information

"Eugene's Only Home-Owned Building Block Industry" Build It With Blocks **RAYSTONE CONCRETE PRODUCTS** 3804 Pacific Hwy South Ph. 4-5771

Paint Blind Slats In Two Colors

If you are repainting the slats of old venetian blinds, give some thought to a two-tone job—a different color for each side. The side of the slats usually turned out can be painted to harmonize with the color of exterior walls. The side usually turned in can be painted to match or blend with the interior.

Register-Guard, Eugene, Ore., Sun., Sept. 21, 1952 5B
SKEIES gladly give you free Estimates on Watch Repair.
BERKELEY PUMPS COFFEE'S PUMP SERVICE
820 Hilyard Ph. 5-2752

Smithwick Exclusive Manufacturers of **Lite-Wate HAYDITE**
No matter what type of building... **HAYDITE Expanded SHALE BLOCKS** offer you the best in economy, strength, light weight, heat and sound insulation and enduring beauty — the things most desired in any building. For complete information, phone, call or write to **Smithwick CONCRETE PRODUCTS CO.** 2828 Pacific Hwy. 99 N. EUGENE Phone 5-4359

Easy to Build PLANTERS



with **COLORFUL NATURAL STONE**
Here is the most versatile of all building materials... beautiful, richly colored natural flagging and building stone to enhance the charm of any home. This high quality stone from Arizona and other famous quarry states blends and harmonizes with the surroundings to make it the choice of leading designers and architects. And remember, too... there are many practical construction advantages.

Ideal for many uses! For fireplaces, patios
Interior or exterior, you'll be pleased with the lasting beauty of colorful natural stone from Arizona and the Southwest.
For exteriors, terraces
There's no limit to the many uses of this harmonizing stone for landscaping, interior decoration and construction.

J. A. WILEY CO.
2803 S. I. GRAND AVE., PORTLAND 2, OREGON
HEADQUARTERS FOR COLORFUL BUILDING AND FLAGGING STONE from Arizona, Colorado, Nevada, Utah, Vermont and Washington

need a CHIMNEY?



save up to \$60 install your own **Van-Packer SAFETY CHIMNEY**

A reinforced masonry chimney that comes in sections, complete ready for you to install yourself in less than three hours. 100% fire safe... can touch wooden supports without fear of scorching. Requires no floor space or foundation. Suspended from ceiling or floor joists (see illustration). Comes complete ready for you to install... including rain cap, flashing, roof cap, cement. FHA terms available.

for **FREE** estimate call **5-3353**

JOHN WARREN, Hdwe.
771 Will. — Eugene, Ore.
Rush information on VAN-PACKER SAFETY CHIMNEY.
Name _____
Address _____
City _____ State _____

Can you afford to waste what Iron Fireman users are saving?

use **ECONOMICAL HEAVY OILS** with the **IRON FIREMAN INDUSTRIAL OIL BURNER**

You can save many fuel dollars with the Iron Fireman Industrial Oil Burner. It produces a steady, even flame, regardless of varying oil temperature or viscosity, and it stays steady, even at low burning rates.

New Principle of Oil Control
Iron Fireman's exclusive Oil Volumizer employs a new principle of oil control which is positive and precise. Oil feed-rate is regulated by volume, for efficient, non-pulsating combustion.

Phone or write today to find out how the Iron Fireman Industrial Oil Burner can reduce your fuel and labor costs.

H & S PLUMBING & HEATING
771 Blair Phone 4-8461