

Whale Steaks Gain Favor on East Coast

By HERB ALTSCHULL
Associated Press Writer

WASHINGTON—(AP)—You can't buy a steak and balance your budget, says an Interior Department official said Sunday. A lot of people are buying whale steaks.

Raymond M. Gilmore of the Department's Fish and Wildlife Service estimated that about 1,000 tons of whale meat are sold in the United States each week. People are buying it all along the eastern coast.

Dr. Gilmore said, "Just as difficult as beef," he said, "and it's nutritious, too."

Whale meat is dark red, almost black. Grilled or fried, it tastes like beef, venison or elk.

Dr. Gilmore said, "you'd be surprised if you fix it like Swiss steak."

Whale steaks are in short supply now. "People ate up all the steaks that were around," Dr. Gilmore said. But the importers are bringing in the meat except to the one-pound steaks back on the market shortly.

They're not very thick, these whale steaks, about 3/4 of an inch. They're lean and have no fat.

Whale is not among the most popular meats in this country. It is eaten quite extensively in Japan.

The Japanese use whale meat as a staple, economy protein. Dr. Gilmore said, adding that it's popular, too, in such places as Norway, Iceland, Newfoundland, England and the Antarctic areas.

Nearly all the whale meat consumed in this country is bought from the Norwegians. There are no longer any American whale hunters, Dr. Gilmore said. That's because whale oil doesn't bring a good price here these days.

THERE SEEMS to be no immediate danger of any shortage of whale meat, Dr. Gilmore observed. Whales multiply rapidly.

The big sea mammals live about 10 to 20 years and attain weights of up to 200 tons. Only the very best meat is used for eating. And there's plenty of that in a whale. In a relatively small whale, there's about 2 1/2 tons of good eating meat.

Arthritis Discovery

The dramatic new approach to arthritis, neuritis, rheumatism pains is now available in Eugene. ARTHRIRINONE, based upon the principle of giving rapid analgesic action upon pain, building blood cells and cleansing urinary action, is available to all sufferers without a prescription only at Everybody's Drug Store. \$3.00. Mail orders postpaid by Everybody's Drug Store, 986 Willamette, Eugene, Oregon.

Charles A. Sprague's Oregon Statesman Recommends Paget

"Paget's pedigree of party loyalty and activity is commanding . . . Paget . . . may be depended on to work faithfully for the party interest regardless of who the candidates are. Paget has earned the job of National Committeeman for Oregon and so (we) recommend him."

C. C. Chapman's Oregon Voter Endorses Paget!

"Our preference is for Lowell Paget because of his lifelong consistent record of work in and for the Republican Party, his previous experience as national convention delegate and chairman of national committee subcommittees, as chairman of Oregon party organizations, and his character, skill and proficiency."

OREGON VOTER, MAY 10, 1932

Elect a REAL REPUBLICAN



to this important Republican Party position!
LOWELL C. PAGET
Republican National Committeeman
VOTE 14 X
Ed. Adv. OMAH C. PATRICK, Editor for National Committeeman Committee, 510 Fenton Bldg., Portland 1, Oregon

Odell Air Strip Meets Reality

OAKRIDGE — A contract for building Odell Lake Flight Strip, emergency airplane landing field, is to be let within two weeks, W. C. Hill, engineer for the State Board of Aeronautics reported last Friday at Oakridge.

The strip is located midway between Odell and Crescent Lakes, east of Highway 58. Surfacing will be of natural pumice soil in the region. The airfield is similar to the Santiam Flight Strip.

Cleaning and grubbing of the 8500-foot strip has been completed by Jack Robinson of the \$8400 contract. The work was started last fall but was delayed by snow.

Browsing Room Talk Scheduled

"Open Society and Its Enemies," by Karl Popper, will be the topic of the week at the Wednesday night Browsing Room lecture.

Dr. E. S. Wengert, head of the political science department at the University, will be the speaker at the 8:30 p.m. session in the Browsing Room of the Erb Memorial Student Union. Dr. Albury Castell, head of the philosophy department, will be discussion leader.

This is one of the lecture-forum series sponsored by the university. The lectures are open to the public and relate current trends and problems to great books and writings in literature, science, political science, philosophy and economics.

"I Thought the Gas Gauge was broken"

says Sam Pearce, Seattle, Wash. "If you want pickup, there isn't a car on the road, in any price class, that can beat the Rambler. Yet for economy, the gas gauge goes down so slowly you think it's broken."



IT'S TRUE. Nash Rambler owners are amazed at the sensational mileage they get. This is the car that holds the all-time record in the Mobilgas Economy Run with 31.05 miles per gallon! This is a real "red-hot" performer with so much room inside! This is such a smart and beautifully equipped car—the only car that comes to you with its many custom accessories at no extra cost!

Come see it. Especially, come drive it. Just take five minutes to discover something absolutely new in handling and parking ease . . . and new in performance, too!

Nash Motors, Division Nash-Kelvinator Corporation, Detroit, Michigan
Nash Golden Highlights
THE AMBASSADOR • THE STATESMAN • THE RAMBLER
SEE YOUR NEARBY NASH DEALER TODAY!

1059 WILLAMETTE

Montgomery Ward

PHONE 4-1401

HOME OWNERS SALE

Every Price Reduced

REG. 1.09 FLAT WALL PAINT

Oil-base paint in white or colors. Reg. 3.75 gallon **99c**

REG. 1.49 GLOSS ENAMEL—QUART

Perfect for kitchen or bath. Highly water resistant. White, colors. **1.34**

REGULAR 1.19 ENAMEL BRUSH

2 inch pure bristle. Easy working. Reg. 1.89 Neoceta Brush, 4" **97c**

REGULAR 1.29 SPAR WAX—QUART

Best grade camouba wax. Protects. Reg. 1.25 Seal Tone **1.12**

REG. 7.75 TWO-IN-ONE LADDER

5-ft. step ladder opens up to 10-ft. straight ladder. Safe, sturdy, handy. **6.74**

REGULAR 1.49 DOOR CLOSER

Air compression model. For light-weight screen doors. Aluminum finish. **1.22**

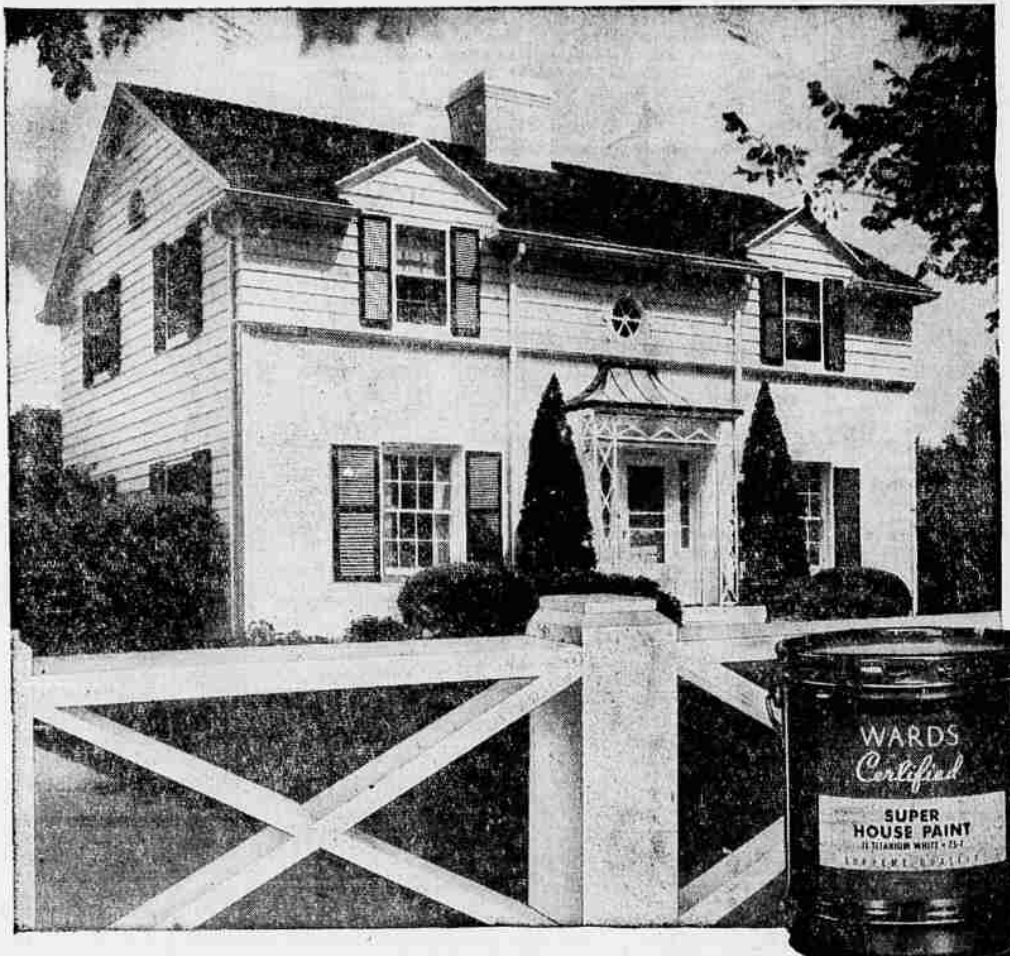
REG. 13.95 ELECTRIC MOTOR

1/2-HP split-phase. 1725 RPM. For 110-120 volts, 60-cycle, AC only. **12.88**

REGULAR 3.89 YARD LIGHT—14"

Heavy-gauge aluminum reflector, non-chip gray finish. Weather resistant. **3.22**

STORE HOURS: 9:30 A.M. to 5:30 A.M.
Friday 9:30 A.M. to 9:00 P.M.



SALE—SPRAYER

Reg. 43.75 **40.74** With Motor

1/2-HP Diaphragm Paint Sprayer. Compressor displaces 3.3 cu. ft. of air per minute at 30 lbs. pressure. Includes internal-mix bleeder gun with fan and round spray heads. Reg. 27.45 sprayer, less mtr. **24.88**

SPRAYER REDUCED

Reg. 62.95 **57.88** With Motor

1/2-HP Piston Paint Sprayer—light-weight and efficient. Compressor displaces 4.0 cu. ft. air per minute at 35 lbs. pressure. Has enclosed oil separator and filter. Includes combination-type gun, 15 ft. hose.

SALE—HOUSE PAINT

Reg. 4.89 **4.44** Gal. in 5's

Super White House Paint—finest quality. Rich in Linseed oil for long life. Contains Titanium Dioxide for intense hiding power—stays clean looking. Goes on easily, smoothly. Reg. 4.98 single gallon. Now **4.54**



REGULAR 8.95 GARDEN CART

All Steel **7.44** Deep-sided

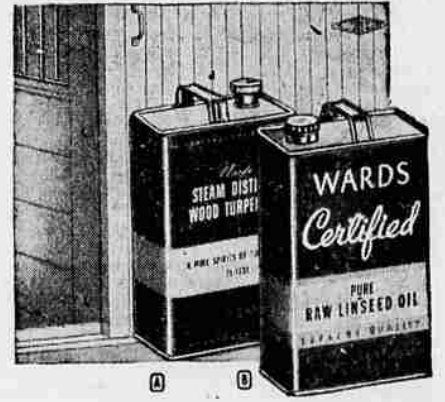
Makes yard work, household chores easier. Use for hauling leaves, trash, etc. When cart is tipped forward, lip lies flush to scoop up material. Well-balanced, large—2 3/4 cu. ft. capacity.



TILE-GLO, PAINT REDUCED

Tile-Glo **1.14** qt. Excelon **1.13** qt.

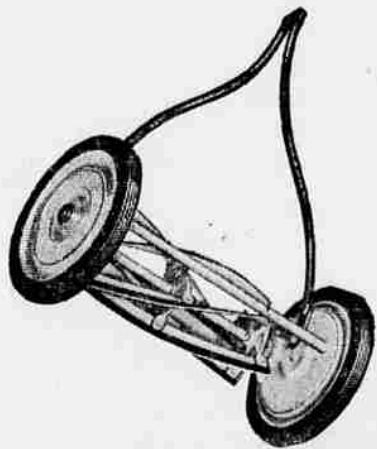
(A) Tile-Glo—finisher for asphalt, rubber, vinyl tile. Reg. 1.35 quart **1.18**. Reg. 75c pint **64c**
(B) Excelon—rubber-base flat wall paint. Scrubbable. Pastels; Reg. 1.25 qt. **1.13**. Reg. 4.19 **3.87**



SALE OF PAINTING NEEDS

Turpentine **1.32** gal. Linseed Oil **2.34** gal.

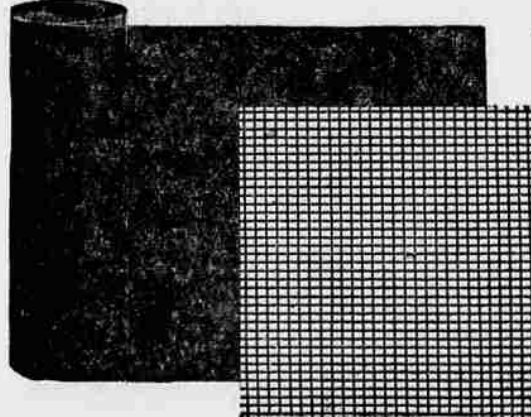
(A) Turpentine—finest quality. Pure, steam distilled. Reg. 1.49 gallon **1.32**. Reg. 49c quart **42c**
(B) Linseed Oil—raw. Preserves wood. Many uses. Regular 2.56 gallon sizes **reduced to 2.34**



SALE PRICED LAWN MOWER 16"

Easy to handle **17.88** Steel handle

Special low price. Lightweight Hand Lawn Mower. Rolls smoothly, quietly over your lawn. 5 self-sharpening steel blades adjust for 3/4 to 1 1/2-in. cut. Fully enclosed wheels and gears won't clog.



9 1/2c GALVANIZED SCREEN WIRE

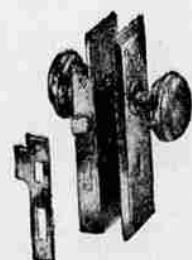
24" to 48" wide **7 1/2c** Sq. Ft.

Re-screen at Ward's low price. Strong, flexible Galvanized Screen Wire, tightly meshed 18x14. Rust-resistant, easy to put up, easy to maintain. Gives years of lasting service with normal care.



REG. 39.95 ELEC. SAW 34.88

6 1/4" Power-Kraft Saw, light-duty model. Use in home workshops, repair shops. Complete with bevel adjustment.



REGULAR 1.89 LOCK SET 1.47

Inside bit key. Broad beveled-edges plates. 2 1/4" knobs. For right or left hand doors. 1 1/4 to 2" thick. Steel case.