

Intensive Soil Use Urged to Increase Farm Production

By DAN WYANT
Register-Guard Staff Writer

The potentials of increased farm production through soil conservation and better use of water resources are stressed in a new Extension Bulletin 725, published by the Extension Service at Oregon State College.

Soil and water are the two basic resources under the management of man that provide the foundation and framework for the economy of Oregon," the bulletin notes.

expansion of acreage for cultivation has about its course. But expansion of agricultural production through intensive use of the soil has unlimited possibilities. Above, a typical section of Willamette Valley farm land illustrates the potential with its pastures, croplands, and farmer-owned timber.

turning under cover crops. In addition, the bulletin says, the use of rotations and addition of lime, phosphorus, nitrogen and other

★ ★ ★
EXPANSION OF Agricultural production by increasing acreage under cultivation "has about run its course," a report compiled by Oregon State College notes. But, intensive use of the soil has unlimited possibilities. Above, a typical section of Willamette Valley farm land illustrates the potential with its pastures, croplands, and farmer-owned timber.

★ ★ ★
commercial fertilizers as needed have proved their value. Further development of storage facilities, dams, and canals will permit irrigation of an additional 633,000 acres of lands throughout the state.

Now under irrigation are 62,000 acres in Southern Oregon, 80,000 acres in the Willamette Valley, 990,000 acres in Eastern Oregon, and 11,000 acres in the coast area.

Farmers are just beginning to recognize timber as a crop, although about one-sixth of the state's farmer-owned lands are in timber.

★ ★ ★
MOST OF THIS land can grow timber indefinitely at a profit, and farmers need information on good management practices and methods of harvesting and marketing, the bulletin says.

In Western Oregon there are approximately two million acres of hill pastureland—most of which is underdeveloped and clogged with brush and ferns.

The bulletin recommends clearing and seeding of this land to useful pasture grasses and legumes, not only to make the land more productive, but also to reduce erosion.

Some of this land, the bulletin notes, would perhaps be better returned to timber production.

★ ★ ★
OVERGRAZING and drought have resulted in the deterioration of 31 million acres of grazing land in Eastern Oregon, according to the bulletin. Sagebrush covers most of the non-forested land. Removal of sage brush and cheat grass in other places would greatly increase the carrying capacity of the land, the bulletin notes.

The bulletin is an abstract of a report on Soil and Water Conservation and Use Program submitted last year by a special staff committee of Oregon State College. Copies of the bulletin will soon be available at the County Extension office.

★ ★ ★
Writer-Producer Switches Studios
HOLLYWOOD — Sy Gomborg has been signed by Columbia Pictures as a writer-producer.

Gomborg recently completed an original screenplay, "Bloodhounds of Broadway," based on characters created by Damon Runyon, for 20th Century-Fox.

Last year Gomborg received an Academy Award nomination for "When Willie Comes Marching Home," in the best original story classification, and has written the original screenplays of "Summer Stock" and "Toots of New Orleans," for MGM.

★ ★ ★
Marsha Hunt Returns After Film Absence
HOLLYWOOD — Marsha Hunt, who forsook Hollywood four years ago to concentrate on the stage, has arrived back in Movietown for the important role of Charles Boyer's wife in "The Happy Time."

Miss Hunt recently on the road with a successful tour of "The Cocktail Party," left the cast in Minneapolis to start rehearsal with Boyer for the film, adapted from the Broadway hit by Samuel Taylor.

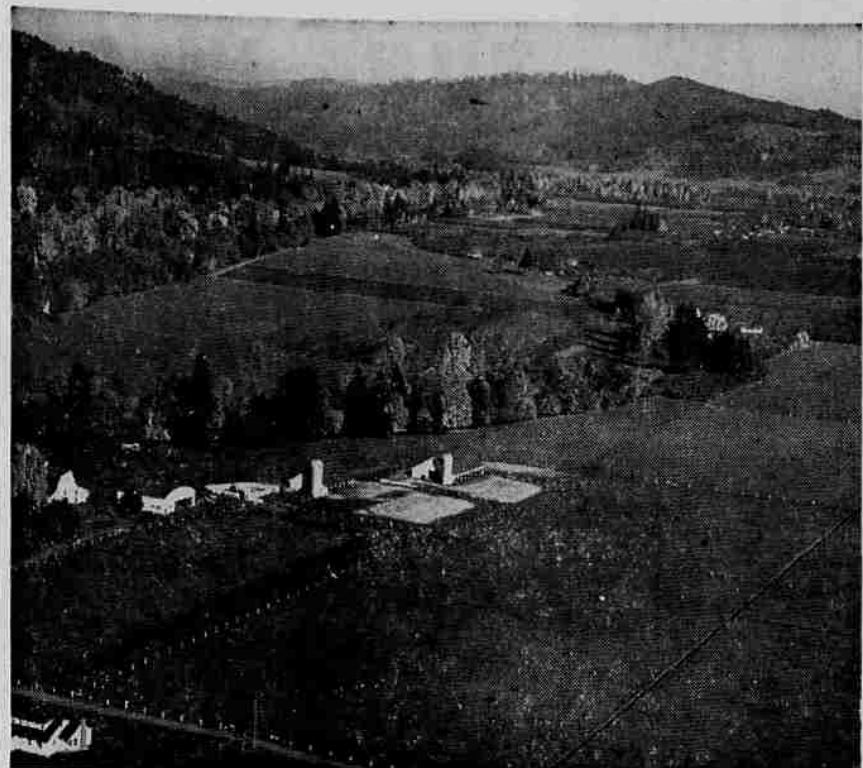
Eugene Register-Guard

LANE COUNTY'S HOME NEWSPAPER

SECTION C

EUGENE, OREGON, SUNDAY, APRIL 13, 1952

PAGE 35



(Willshire engraving)

Miners Scorn Gold in Hunt

CASCADE, Idaho (NEA)—Old gold mines of the Far West are starting to hum again, but the yellow metal isn't what they're after.

Dredges are scooping up tailings from gold seekers of years ago in the quest for monazite sands. You've probably never heard of this complex material, but it may prove even more valuable than gold.

Many of the rare earth minerals so badly needed by American industry are in monazite sands. An alloy called misch metal (German for mixed) goes into the making of jet engines to withstand heat. Engine producers rate it as an absolute must.

The sands, too, contain about four to four and a half per cent thorium. This is radioactive and fissionable, so all of this goes to the U. S. Atomic Energy commission, which now has jurisdiction over these old river and creek beds.

★ ★ ★
HERE, IN THE MILE-HIGH Warren Valley, about 80 miles north of Boise, three huge dredges are scooping up about 15,000 yards of sand and gravel daily. It is a gold mining area first discovered in August, 1882.

Now three companies, Baumhoff-Marshall, Warren Dredging Co., and Idaho-Canadian Dredging Co., are working on what geologists believe to be at least 40 million cubic yards of dredgeable gravel. All told, Idaho is expected to yield more than 200 million cubic yards of monazite.

Big Molybdenum Corp. of America, near Ivanpah, Calif., has spent \$300,000 for the old Sulphide Queen mine, which is believed to contain rare earth metals. This mining camp was first opened up in 1869.

★ ★ ★
UNTIL SEVERAL years ago, this country's monazite sands came from Brazil and India. When the nationalistic fervor of those countries stopped exports, replacement was needed for the 2500 to 3500 tons we normally imported.

So the scramble is on in the old gold fields for rare earth metals, including such tongue-twisters as lutetium, ytterbium, lanthanum, praseodymium, neodymium, samarium, europium, gadolinium, terbium, dysprosium, holmium, erbium and thulium.

These "lum" metals have many uses. Cigarette lighter flints are made from their alloys. Others are used to clean and filter aluminum and magnesium and to strengthen it. Cerium compounds help make textiles and canvas mildew, moth and water proof. Some beauty preparations contain lanthanum salts.

★ ★ ★
THE DEVELOPMENT of the gas mantle lamp started monazite production in this country in 1885. That year the U. S. produced 787 tons and was world supplier until 1895, with most of the sands com-

ing from Florida and the Carolinas. The more costly U. S. production was stalled by Brazilian imports in 1910.

Like all scarce materials of metals, the monazite sand shortage has skyed prices. In 1922 the price was \$180 per ton, slumping as low as \$80 during World War II. But now sands containing 65 per cent rare earth metals are reported to be worth \$375 per ton.

★ ★ ★
In addition, Oregon reported advances in papers and printing average hourly earnings, while Washington showed small increases in hourly earnings in most manufacturing industries.

Indians Mourn Loss of Image

GUADALUPE, Ariz.—(AP)—Under a pale desert moon, Yaqui Indians wailed their sorrow Thursday night over the seizure of Christ's image in a rude Garden of Gethsemane fashioned from green bough stuck in the ground.

They mourned the triumph of evil forces represented by tribesmen acting out the role of Pilate's soldiers who seized the effigy.

The dancing and pageantry marked the second day of the half-pagan half-Christian rites staged by the Yaquis in Arizona, both at Guadalupe, south of Phoenix, and Pascua, near Tucson. Similar ceremonies are underway in the tribal hill villages of Sonora, Mexico.

Advances Listed In Employment

SAN FRANCISCO (AP)—Employment in industry, commerce and government on the Pacific Coast rose 17,000 from the previous month to 4,562,000, the regional Bureau of Labor Statistics reported this week.

Total employment, the bureau said, is running ahead of 1951, by 145,000 this month, with only contract construction and interstate railroads showing levels lower than February, 1951.

Manufacturing, now employing 1,197,000, added 18,000 during the month, 16,000 in the durable goods segment. In Washington and Oregon, logging and lumbering operations increased employment by \$4000 in each state. However, the level in this industry is about 7 per cent lower than last year.

Contract construction, with 267,000 in February, gained 8000 workers during February; 5000 in California, 2000 in Washington, and about 1000 in Oregon.

Changes in government employment, confined to Washington, lowered the total about 1000 to 814,000.

★ ★ ★
Oregon reported average weekly earnings of \$77.86, Washington 76-23, and California 76.06—all well above the U. S. average of \$66.83.

Register-Guard, Eugene, Ore., Sun., Apr. 13, 1952 Page 35

Coleman Asks Funds Turn-In

Red Cross Drive Still Shy of \$100,000 Goal

The 1952 Red Cross fund drive is not over yet. About 25 per cent of the \$100,000 quota is still out, Fund Chairman Gordon Coleman reported Thursday. All workers should continue their jobs until the last envelope is in.

Coleman said that many large firms have not yet turned in envelopes, and these are badly needed to assure the quota.

★ ★ ★
Pacific Area Red Cross notified us this week that the fund drive is now in a crucial stage," the chairman reported. "Recent floods have depleted disaster funds. With more floods expected daily, it is imperative that all chapters meet their quotas. This chapter is no exception."

Giving through the Red Cross is one way that all persons can help victims of flood and other disasters, Coleman declared.

All unreported collections should be turned in this week to campaign headquarters above the Red Cross offices. Firms or individuals with envelopes to be picked up should call the fund appeal headquarters.

★ ★ ★
Since the first of March, when the Red Cross fund appeal opened, the Lane County Chapter has given financial assistance and food, clothing, bedding, rent, and furniture to nine families in the county whose homes were destroyed by fire. More families living in the county mean more fires, and more fires mean the chapter is spending more money than ever before to help these burned out families re-establish themselves.

The cost of supplies, such as blankets and clothing, has risen sharply the past year. This is one reason the chapter needs that last 25 per cent of the fund quota that is still out, Coleman said.

Contract Called For Steel-Reinforced Bed

HOLLYWOOD—Strange, indeed, are the clauses inserted at times in contracts of movie players.

Buddy Baer, who is 6 feet, 6½ inches tall, weighs 285 pounds, insisted on the following paragraph in his RKO Radio contract when he signed for a role in Winchester Pictures' "The Big Sky": "And the producer further agrees, when the production unit is on location in Wyoming, to furnish the artist with a steel-reinforced bed 7½ feet long."

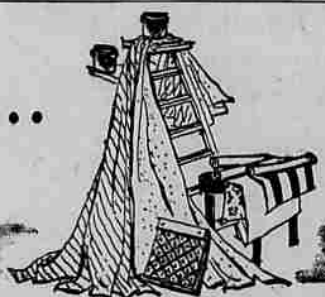
★ ★ ★
Marilyn Looks Good—Even in Her Jeans

HOLLYWOOD—Marilyn Monroe appears in a great part of the Jerry Wald-Norman Krauss film, "Clash By Night," wearing a classic costume consisting of blue jeans and a T-shirt—a costume notoriously displeasing to most men.

★ ★ ★
On Marilyn, however, almost anything looks good. Or as Robert Ryan, another star of the production, put it: "This is a case where the end justifies the 'jeans!'"



Good News for Home Planners...
Sears Exclusive...



Harmony House Colors

Go Together

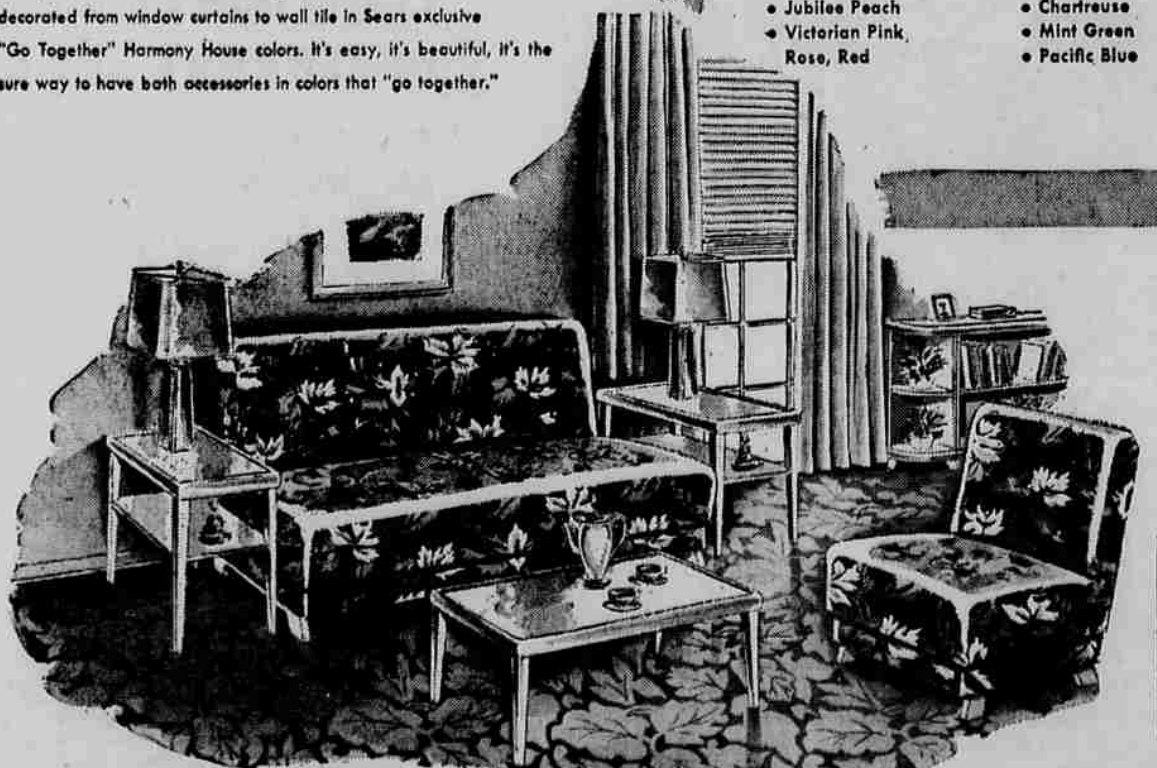
Color-Right Living Rooms...
It's easy to decorate your living room when you choose home furnishings in Sears exclusive "Go Together" Harmony House colors. Each color has varying shades from light to dark that are sure to blend harmoniously with each other. This takes the guesswork out of shopping and decorating.

New Bedroom Beauty...
You have 17 Harmony House colors to choose from when you decorate your home. Each varies in shade from light through medium and dark. Choose a colorful, pleasing combination for bedroom beauty and know that Harmony House colors "go together."

"Go Together" Colors Beautify Bathrooms...
Now your bathroom can be color-right, color-beautiful... decorated from window curtains to wall tile in Sears exclusive "Go Together" Harmony House colors. It's easy, it's beautiful, it's the sure way to have bath accessories in colors that "go together."

EASY TO CHOOSE... LOVELY TO USE! Choose Harmony House and be color right. From sofas to shower curtains, complete furnishings for your home are available in "Go Together" Harmony House colors. This means that when you choose Harmony House Dawn Gray carpeting you will be able to select many other Dawn Gray tones in other furnishings. This is true of all Harmony House colors.

- 17 Basic Harmony House Colors... Each in Shades from Light to Dark
- Colonial Blue
 - Parchment Ivory, Beige, Brown
 - Valley Rose
 - Tuscan Rose, Wine
 - Federal Gold
 - Sage Green
 - Jubilee Peach
 - Victorian Pink, Rose, Red
 - Aquamarine
 - Cherry Pink, Red
 - Dawn Gray
 - Sunshine Yellow
 - Malibu Peach, Coral, Rust
 - Spice Beige, Brown
 - Chartreuse
 - Mint Green
 - Pacific Blue



"Satisfaction guaranteed or your money back" SEARS

Corner 10th & Charnellton
Phone 5-1561
2 Hrs. Free Parking

WESTERN UNION

SYMBOLS	
DL	Day Lamp
NL	Night Lamp
LC	Delayed Cable
NLT	Cable Night Lamp
	File Reference

This message telephoned from New York due to lack of Western Union facilities. This is not a telegram.

APRIL 12, 1952

JOE RICHARDS MEN'S STORE
BROADWAY & WILLAMETTE—SUNSHINE CORNER
EUGENE, OREGON

PLEASED TO HEAR YOUR REPORT THAT THE MAJER FLANNEL SLACKS ARE RECEIVING THE ENTHUSIASTIC APPROVAL OF OUR CUSTOMERS. THE MAJER COMPANY IS SHIPPING YOUR THIRD REORDER OF GREY FLANNELS TODAY. THE MAJER SLACK IS STILL THE BEST VALUE DOLLAR FOR DOLLAR FOR OUR CUSTOMERS.

JOE RICHARDS