

Scholarship for Travel

and dollars has been able for foreign travel for the advanced architecture at the University of Oregon or the profession architect who is selected the annual scholarship.

ing committee of the established by the late has announced that the is for foreign travel as outlined by the applicant and selected committee.

will be made on the character, health, ability and need of travel. Applicants must be under 27 years of age and must have completed April 1 by Dean Sidwell, school of architecture, University of Oregon.

of the increase in stipends previous years, the committee has announced that the scholarship will be changed annual to a biennial.

and, applicants will be by Irving Smith or Kotechick, professional

Nancy Peterson Wins Oratorical Contest

A speech on "Totalitarian Education" won first place for a University of Oregon woman in the State Old Line oratorical contest. She is Nancy H. Peterson, senior in journalism from Portland.

Warren W. Webster, Eugene, took third place in the men's division for his speech on "Too Much Sky." He is a senior in general social science.

City Draws 10,000 For Spring Opening

More than 10,000 persons gathered in Eugene Thursday evening for the Spring Opening, according to Clay Baxter, chairman of the Retail Merchants Division of the Chamber of Commerce, sponsors of the opening.

"Everything went off as scheduled," said Baxter. He added that he had had many telephone calls of praise for the Spring Opening. The phone calls were from people impressed by the variety and originality of the window displays, the parade of 35 1949 cars, the talent show and the Eugene High School band music, he said.

"Spring Opening was a tremendous success for all concerned," said Baxter.

Mint Growers Set OSC Meet

At the request of mint growers, Oregon State College has arranged a meeting to be held on that campus starting at 10 a.m., Tuesday. It will be held in Room 105 of the Memorial Union Building.

The morning session will feature a discussion of the mint situation and outlook by Marion D. Thomas, extension agricultural economist; harvesting studies by Dale Kirk, assistant agricultural engineer; time of harvest and chemical analysis by D. E. Bullis, chemist.

These talks will be followed by a consideration of weed control by Virgil Freed, associat agronomist, and Dr. W. L. Powers, head of the department of soils, will discuss fertilizers for mint.

After lunch, the growers will listen to B. G. Thompson, entomologist, speak on the control of insect pests. The program will conclude with a general discussion of mint problems by the group with Earl Charter, Columbia County grower, presiding.

Further information can be obtained from the office of County Agent O. S. Fletcher. Many Lane County growers are expected to attend and those having transportation difficulties are asked to contact Fletcher.

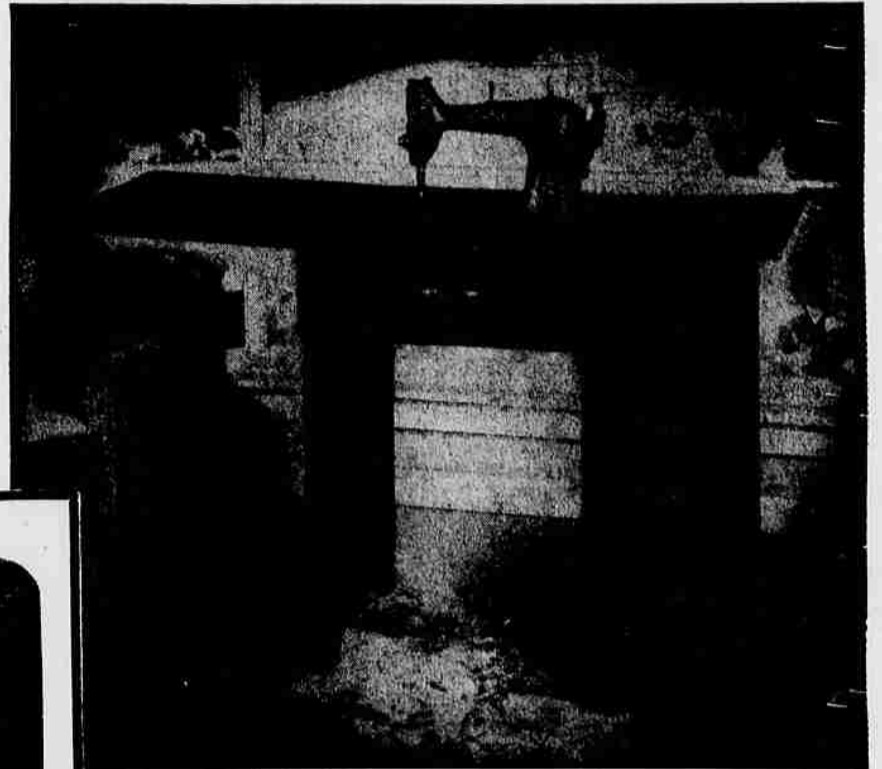
Household Savings up to 50%

with a

Free-Westinghouse Sewing Machine

EXCLUSIVELY IN EUGENE AT RUBENSTEIN'S

Save up to 50% on clothing, linens, curtains, slipcovers . . . It's simple with a ~~Free-Westinghouse~~ . . . and Rubenstein's Easy Terms!



GIVEN FREE!

- A set of attachments with each machine.
- Complete operating instructions given in your home by a Factory Trained Expert.

Every Model Guaranteed For 20 Years!

SPEED UP and SIMPLIFY your work with these ~~Free-Westinghouse~~ Features:

No Tangling, locking or binding of thread with the new "Floating Gib Hook".

Instant Reverse . . . with a flip of the switch . . . sews either backward or forward.

Glides over Pins and Seams automatically with new hinged presser foot.

Smooth Speed Control . . . slight knee pressure starts, stops, and regulates sewing speeds.

Positive Feed . . . moves all kinds of materials evenly —with a perfect stitch.

Less Vibration—Spiral gears constantly quiet and smooth running. No oiling.

Self-releasing Bobbin Winder . . . No over-filled bobbins or tangled thread.

Easy Tension Control for all sizes of thread and material thickness.

Built-in Sewing Lamp protects eyes from glare and strain.

Darning . . . done quickly, easily.

Use RUBENSTEIN'S Easy Payment Plan



At the Corner of Eighth and Olive

Montgomery Ward

SALE 3 DAYS ONLY

Limited Group of Dresses

REGULARLY 9.98

NOW **\$8**

SAVE ALMOST \$2

- NOT leftover dresses
- NOT closeout dresses
- NOT clearance dresses
- NOT imperfect dresses

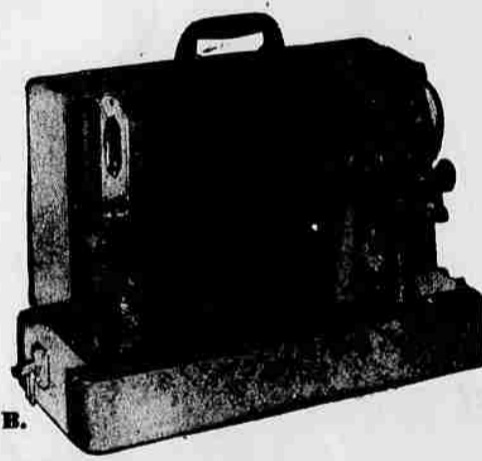
Get All Fresh New Spring Dresses from Top Manufacturers' Stocks

The quantity is limited, so come early. They'll go fast! Take advantage of this sensational Ward sale event. After 3 days (if there are any left), the price goes back to its regular 9.98.

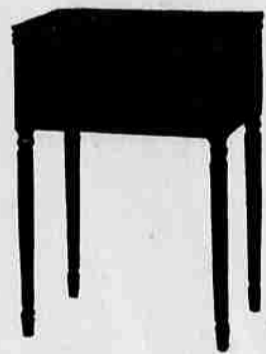
One and two piece styles; prints, solids, or combinations; rayon crepes, spuns, gabardines, taffetas; Junior, misses, women's and half-sizes.



A. MODERN DESK
A handsomely designed model of rare charm . . . spacious, useful, beautiful. Ideal for your sewing pleasure. Front panel and drawer fronts are constructed of Matched Butt Walnut veneer. Cover, top frame ends and back of selected Stripe Walnut veneers. Convenient built-in bookshelf and three spacious drawers. Satin brass and Catalin pulls. **257.00**



B. PORTABLE
A cleverly designed portable that is new and practical. Light, compact and sturdy. Leatherette case of luxurious two-tone colors. Padded attachment box in base of portable. Spring handle. **143.50**



C. SHEERATON
A lovely low priced console! Door in matched Butt Walnut Veneer. Cover and ends of selected Stripe Walnut veneer. Top frame Solid Walnut — Back and legs of strong Walnut finish hardwood. Useful sewing rack inside door. **174.00**



D. HEPPELWHITE
A masterpiece in beauty and quality! The smart period-style console has many decorative uses. Crotch Walnut veneer hinged front. Matched Butt Walnut veneer cover and Solid Walnut top frame. Ends and back are of Striped Walnut veneer. Walnut finish hardwood legs and stretcher. Antique English impression given to drawer pulls. Finished in a soft, mellowed traditional beauty. Also comes in Mahogany. **184.00**