

## Union High Prepares Fall Term Program and Business Affairs

SPRINGFIELD — E. H. Silke, superintendent of public schools, said Thursday that the Union High School will open Monday, Sept. 15. The decision was made at a recent meeting of the school board.

It had previously been announced that the grade schools District 19 would open on the same date. Registration for both districts will be on Wednesday and Thursday, Sept. 10 and 11.

## Play Areas Set Final Activities

The Eugene playgrounds, under the auspices of the Bureau of Parks and Recreation, will hold final activities Friday, according to Miss Nina Kitts, summer supervisor.

Special activities have been scheduled for Condon, Willard, River Road, Butte, Sladepark, and 19th and Lawrence playground areas from 11:30 a.m. to 4:30 p.m.

Closing activities will also be a part of the tennis classes at the University of Oregon courts from 9 a.m. to 1 p.m. Also at 1 p.m., children from Whiteaker playground will go on a picnic.

The Anchorage pool will remain open from noon to 4 p.m. and from 6 to 9 p.m. the remainder of the month, Miss Kitts said.

A report on attendance and activities of the summer playground schedule will be released this weekend.

**ARMY SUPPLIES**  
Gilkey Trading Post, 1873 Franklin at 12th Ph. 5918-W.

**Kool-Aid**  
Makes 20 FROZEN SUCKERS  
6 FLAVORS APPROX. 10¢

**FREE PROGRAM IOOF TEMPLE**  
SATURDAY, AUGUST 23 — 2 P.M.  
Good Housekeeping and Home Management Health & Beauty Many Fine Prizes Everyone Invited

A lasting investment in gracious living

The magnificent **Magnavox** RADIO PHONOGRAPH

See it - Hear it at **MUSIC ART Graves**

1108 WILLAMETTE PHONE 4401



**KLEER KLEEN OIL FLOOR FURNACE**

Have this fully automatic floor furnace installed while stocks are available.

Automatic forced draft — forced draft circulation — steady heat — very economical operation.

Underwriters approved.

Call us for an estimate — 3 years to pay.

**CAROTHERS Sheet Metal Co.**  
"Eugene's Heating Headquarters"  
42 W. 8th Phone 3750

and teachers are to report on Sept. 8.

**Resignation**  
The high school board accepted the resignation of Miss Grayce Greenleaf, English and dramatics teacher in the high school who is to be married. Mrs. Vernelle Smith was hired as clerk for Districts 19 and 15, effective Oct. 1. She will replace Mrs. Mary Clark, clerk for the past eight years.

The board decided to start a hot lunch program in the high school on Oct. 15. Silke said they expect to have the cafeteria, which is nearing completion now, ready to serve cold lunches when school starts.

The cafeteria program will be operated by the school and the board will hire cooks and cooks' helpers at the next meeting in September.

**Agriculture**  
The board voted to start an agricultural course this year providing an experienced man can be hired as instructor. The course will be under the supervision of the State Board of Education, which will help finance the program.

A \$5 per month fee was set by the board for students attending the high school from outside the district who desire to ride the school buses.

## Ex-Eugeneans Plan Picnic

Former Eugeneans living in Portland will gather Sunday at Laurelhurst Park for an annual basket lunch picnic about 2:30 p.m.

Ralph Robinson is president of the big city branch of Eugene folk. Alleia McElroy, vice-president, and Daisy Geddes, secretary.

They have invited any local people who will be in Portland Sunday to drop around with some potato salad and other refreshments they might be able to bring. Coffee will be furnished.

## Active Club Seeks Clothing for Holland

Persons who wish to contribute good used clothing and shoes to Active Club clothing drive for Holland relief are asked to telephone 770 before Saturday evening, giving name and address. Club members will collect the clothing Sunday.

All material collected will be shipped directly to the Netherlands Round Table, a young men's service club, and direct distribution to the needy will be made by the club members.

Persons living outside the city limits who wish to contribute may leave contributions at Frank's Basket Grocery, 34 Tenth Ave. E.

The club hopes to collect a ton of clothing in the initial drive, and has announced that shipment will be made from Portland early in September.

## McInnis Given Post On Executive Group

Ray McInnis, secretary-treasurer of the Eugene Central Labor Council, was elected a member of the executive committee, Oregon State Federation of Labor election results showed Thursday.

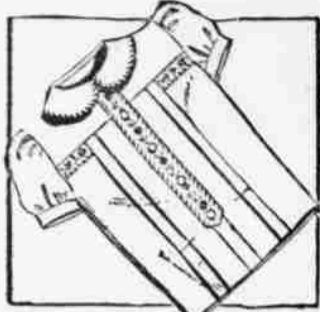
After the count of 20,000 referendum ballots, James D. McDonald and James T. Marr were re-elected without opposition to the presidency and executive secretary-treasurership and Marr's salary was boosted from \$450 to \$525 a month. Cecil Jones and Mildred Gianini, both of Portland, were elected to the two vice-president posts.

The retail cost of building materials in the United States is about double their production cost.

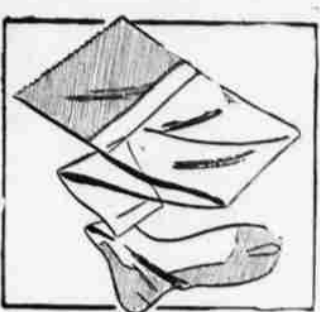
# Montgomery Ward

1059 WILLAMETTE

PHONE 4200



**GIRLS' CRISP BACK-TO-SCHOOL BLOUSES 1.79**  
Sparkling white broadcloth blouses with ruffle or embroidery trims. 7-14.



**BARE-LEG NYLONS ARE SLEEK, TRIM 1.09**  
No seams and sheerest all-nylon! Reinforced invisible heel, toe. 8 1/4-10 1/4.

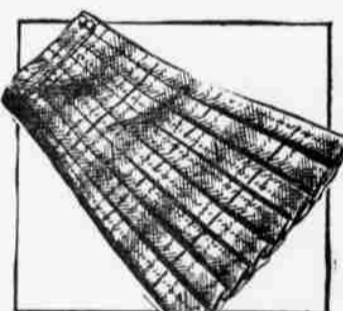


**GIRLS' BROWN MOC STYLED LOUNGERS 3.98**  
Supple leather Red Band quality shoes! For school or play. Rubber soles. 12 1/4-3.

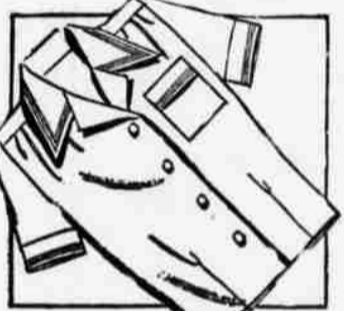


**BROWN 'N WHITES 4.98**  
Girls' saddle shoes of long-wearing smooth leathers with husky non-marking rubber soles. 3 1/2-9.

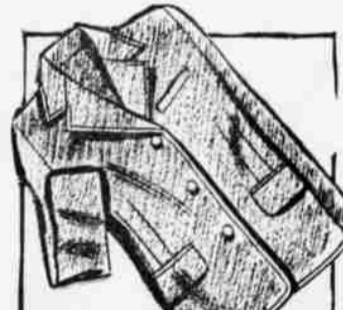
## It's Wards for value plus quality in girls' Back to School Apparel



**PLEATED SKIRTS IN GAY PLAIDS 3.98**  
You'll love them with sweaters for school. Wool blends. Sizes 24-30.



**CAROL BRENT SHIRT OF WASHABLE RAYON 3.98**  
Classic short sleeve shirt of rayon French crepe in pastels, white. 32 to 40.



**CLASSIC JACKETS IN FITTED STYLE 8.98**  
Smart solid colors to wear with plaid or solid color skirts. Wool. 12 to 18.



**WOMEN'S RAYON ELASTIC LEG BRIEF 49c**  
Run-resistant! All elastic band, double crotch. Tearose; white. S-M-L.

Carol Brent slippers in pastels, lights and darks. All-wool. Sizes 32 to 38. **2.98**

Versatile grey menswear flannel skirt, 8-gore style. Sizes 24 to 32. **3.98**



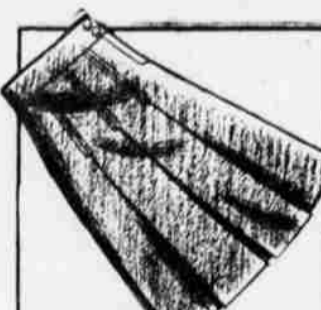
**ALL WOOL SWEATERS FOR SIZES 2 TO 6 1.98**  
Warm, softly knit. Choose from assorted coat styles in red, maize, copen blue.



**GIRLS' FINEST LACE TRIMMED RAYON SLIP 1.98**  
Fine Madeira-type lace trim on four-gore slips of multi-filament crepe. 2-14.



**JACQUARD SWEATERS IN DISNEY DESIGNS 3.98**  
Just what sizes 2 to 8 like! Warm all wool in coat styles. Red, copen, maize.



**TAILORED SKIRT WITH BOX PLEATS 2.98**  
Handsome all wool flannel in smart new colors. Sizes 7 to 14.

ADD ALL YOUR BACK-TO-SCHOOL PURCHASES TO YOUR MONTHLY PAYMENT ACCOUNT!