

Bids, Zoning Action Taken

(CONTINUED FROM PAGE 1)
less they take our homes away from us."
Says 'Logical'
Senior Council Member Verne Hawn contended the area is logically light industrial, and should be rezoned as such. Councilmen Ed Johnson and Harold Wells said they thought the planning commission should be backed in its recommendation for denial.
The company wants to erect a steel corrugated building to house construction equipment. Councilmen promised to investigate the area in relation to its suitability for light industrial firms prior to the June council meeting.

Poll Accepted
Proposed Harris St. improvements were cancelled after a poll showed residents two to one against letting bids at this time. The improvements would have cost property owners \$7.27 per front foot.
The council voted a maximum of \$600 from the emergency fund to send City Manager Deane Seeger to Washington, D. C. within the next few days in support of an appropriation for the Amazon drainage project.

Inam Appointed
Ward Ingham, Eugene lumberman, was appointed to the planning commission, to replace Harry Aldrich, who is moving to Portland.

A petition requesting annexation of the Plat of Inavale and City Outlook Addition, and a second petition protesting the annexation, were sent back to the signers.

Thirty-nine persons signed the original request, while 32 persons signed the protesting petition. Councilmen asked the property owners to come to some agreement as to what portions of that district they want annexed, since an election would cost the city about \$500.

Get Lights
Eugene Water Board will purchase and install an estimated

Jobless Pay Rulings Told

WASHINGTON—AP—The Veterans Administration warned student veterans Tuesday not to claim G.I. unemployment compensation during the summer if they intend to spend their time vacationing.

Only those "actively seeking work who are available for employment and willing to accept any suitable job offered" may accept unemployment pay, VA said.

\$10,000 in floodlighting equipment at the Nineteenth and Washington playground, according to an agreement approved by council members. The city will repay the \$10,000 under a five-year agreement, thus providing lights this year, instead of waiting until the city has the money to purchase them.

Following street and sidewalk improvement petitions were okayed:
Concrete sidewalk on east side Friendly St. between Eighteenth and Nineteenth Aves. W.

Installation of concrete sidewalk on north side Nineteenth Ave. W. between Jefferson and Friendly Sts.; south side of Eighteenth Ave. W. between Jefferson and Friendly Sts.; west side of Madison St. between Eighteenth and Nineteenth Aves. W.; west side of Monroe St. between Eighteenth and Nineteenth Aves. W.

Improvement of Ferry St. between Seventeenth and Nineteenth Aves. E. by asphalt, concrete paving, curbs, gutters.

Improvement of Lawrence St. between Seventeenth and Nineteenth Aves.

Improvement of Fillmore St. from West Broadway to Eleventh Ave. W.

Construction of sidewalks on Van Buren from Twelfth to Thirteenth Aves.

Improvement of Twelfth Ave. W. from Washington to Jefferson Sts.

Vacation of alley between Fillmore and Alameda and Seventh and Eighth Aves. W. (Stenwick and Kok application).

Vacation of alley between Orchard and Walnut north of Fifteenth Ave. E.

Applications for improvement of Tyler St. were held up pending possibility of improving the entire street from Eighth Ave. to Thirteenth Ave.

Resoning applications sent to the planning commission were:
Carl O. Hendrickson, corner Eighteenth Ave. and Harris St., from R-3 up to four apartments to R-2 (any number of apartments).

Thodore R. Olson, Seventh Ave. and Polk St., from single family residential to business.

J. H. Baisler, northeast corner Walnut St. and Franklin Blvd., from residential to business.

Rosa L. Sibley, 265 Sixth Ave. W., from apartment zone to light industrial classification.

Northwest Oil Co., southeast corner Thirteenth Ave. and Lawrence St., from residential to business.

Small Millman Sees Problems

(CONTINUED FROM PAGE 1)
number of large mills report that after they have paid for falling, bucking, trucking and milling a log it is good business to utilize every scrap possible to get their costs out of it, to meet competition, to provide more jobs, to make a profit and to conserve the vital raw material.
The very small mills cannot afford to do this unless they can obtain enough timber to justify the necessary investment.

Better Use
This latter situation has been pointed out by Otto Krueger of the O and C administration here. Both the O and C and the U.S. Forest Service, as well as the various lumber associations, are promoting better utilization of timber as a vital necessity to assure a future supply of timber on which this area depends largely for its prosperity.

Krueger doubts if price is causing peckerwood shutdowns as much as difficulty in obtaining timber. Larger outfits, with lands intermingled with O and C lands, have roads, often partly on their own land, or can afford to build them so they can log O and C timber, because they are assured of supply to justify the expense, but this is seldom if ever true for the very small operator.

George Owen, president of the Western Assn. of Loggers and Lumbermen, who is just completing a new mill here, believes the small mill could continue to operate even at \$30 a thousand if it were operated efficiently—with an output of at least 2500 feet per man per day. But he, too, pointed to the difficulty of obtaining timber.

And he believes the fact that the peckerwoods have no facilities to go out after orders is a prime factor in their present difficulty.

Shearer, who is waiting for a "break," hopes to start his Veneta mill again, but in the main he has things figured out much as outlined above. He can't afford a planer and he has no means of going out after the business, he says, but he thinks if a group of the small mills went together they might finance necessary equipment and do something of this sort.

Motorist Hitches Car To Shiny New 'Post'

FOREST GROVE—AP—Police here reported that the owner of an ancient auto was trying to park his car next to the curb on a steep hill here but the brakes wouldn't hold.

So with a piece of rope he tied the front bumper of the car to one of the city's new parking meters.

He was heard to remark as he walked away: "The parking meters make the best hitchin' posts in the whole country."

The tropical Amazon basin is nearly as large as the United States.

ENDS THIS WEEK!! Free Spring and Mattress With Any Bedroom Suite

at Rubenstein's

Yes, without additional cost Rubenstein's give you, with any bedroom suite you choose, a nationally known quality coil spring and quality mattress. FREE THIS WEEK ONLY! Scores of beautiful Bedroom Sets now on display.

BETTER LOOK AGAIN!

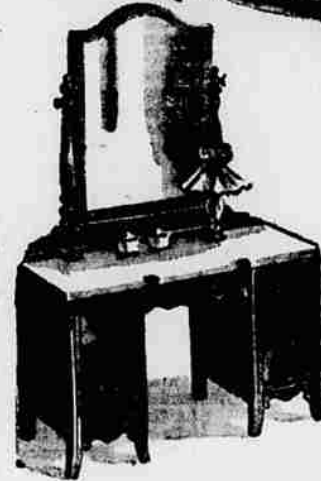
This Handsome
Three-Piece Suite
In Genuine Walnut

99⁵⁰

THE SALE YOU'VE
BEEN WAITING FOR!



Nicely styled vanity, chest and double bed—PLUS a genuine COIL SPRING and a quality mattress included FREE this week.



THE SALE YOU'VE
BEEN WAITING FOR!

Modern FULL OR TWIN SIZE

A truly magnificent suite of furniture in lined oak veneer. The feature of this suite is its great landscape mirror. Complete with five pieces, the vanity, chest, double bed, bench and night stand.

ON SALE AT **199⁵⁰**

with twin beds add \$30.00

Period Style DOUBLE OR TWIN SIZE

18th Century Period styling never grows old. Only genuine mahogany veneers are used in this suite. Complete with vanity, chest, double bed and bench for only

149⁵⁰

with twin beds add \$30.00



Use Your Credit
at RUBENSTEIN'S

Rubenstein
FURNITURE COMPANY
CORNER OF EIGHTH & OLIVE

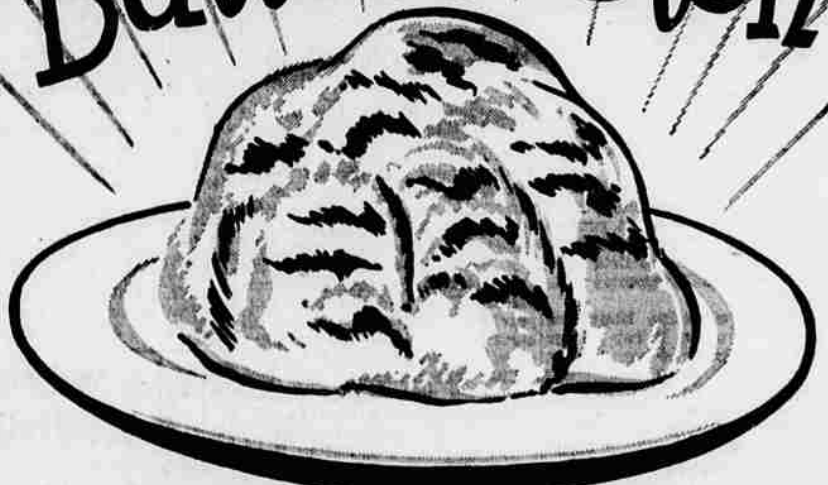
IT'S CATCHING.....

No, not spring fever but the determination to head off inflation and hold down prices. More and more people are honoring this trend by trading where the reductions are being made. The Marshall-Wells store in Springfield is giving a 10% REDUCTION on ALL but fair trade items this week.

Marshall-Wells Store
OTIS MARSHALL, Owner

326 Main St. Springfield, Ore.

Have some tonight
Butterscotch

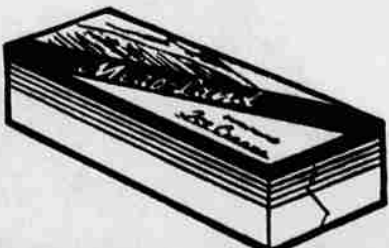


REVEL ICE CREAM!



Here's a real BUTTERSCOTCH SUNDAE brought to you by Medo-Land. Rich creamy chocolate in richer, creamier butterscotch ice cream. If you like butterscotch . . . if you like ice cream . . . if you like creamy chocolate . . . get all three in Medo-Land BUTTERSCOTCH REVEL ICE CREAM! You'll say it's the best-tasting dessert you've ever had.

ASK YOUR GROCER OR CALL 393



MEDO-LAND
DAIRY PRODUCTS