

## Bean Production Cost Study Set

The Farm Management Department of Oregon State College is undertaking a study in Lane County of the cost of production of green beans, table beets, sweet corn and carrots on different size fields, and on different soil types, O. S. Fletcher, Lane County agent, announced Saturday.

Over 50 growers have been selected as prospective cooperators in the survey, Fletcher said, and the selection should give a cross-section of the situation in Lane County.

Over 3500 acres of Lane County land are devoted to these four crops this year, Fletcher reported. The information gathered in the survey, which will be assembled by G. B. Davis of the Farm Management Department and his assistants, will be of value to cooperators in the study and to others interested in growing these crops for processing.

## Recreation Institute Times Announced

A community recreational leadership institute will be held in Eugene at the Community Center each Monday and Thursday, Oct. 14-31, E. A. Danielson, county 4-H Club agent, announced Saturday.

The institute, which is new to Lane County, was planned to give leaders training in group youth activities. The first hour of each meeting will be devoted to group activity. For the balance of the evening, the group will be divided into three sections for study of dramatics, crafts and outdoor activities.

A fee of \$1 will be charged participants to help defray expenses of the institute, Danielson said. The meetings are open to anyone interested in youth leadership activities.

Registration for the institute, which must be completed by Thursday, Oct. 10, may be taken care of through youth agencies or the 4-H Club office in the courthouse.

British settlers in substantial numbers first arrived at the Cape of Good Hope in 1820.



THE FLYING MAILCAR, capable of carrying a nine-ton cargo load of airmail and equipped to sort and cancel the mail while in flight, stands on the Eugene Airport while visitors inspect the postoffice in the hold. Fitting comfortably under one of

the big plane's wings, and with room to spare, stands a trim little Swift, owned by Joe Harrell of the Eugene Flying Service. (Wiltshire photo and engraving.)

## Eugene Sees Special Airplane Fitted for Sorting Mail in Flight

A peek into the future of airmail was granted to Eugene residents who were at the airport Friday morning when the giant United Air Lines flying mail car landed to receive its Eugene load of letters.

Aboard the Fairchild-built Packet, which is the first such plane especially designed for carrying mail and cargo, was Deputy Second Assistant Postmaster General Robert S. Burgess, who watched while two postoffice clerks went through their sorting and handling duties at 5000 feet altitude just as if they were in a railway mail coach. The plane cruises at more than 200 miles an hour.

Included among the 10 postal, airlines and aircraft officials aboard the United "Mallines" were E. S. Ransom, B. E. McCaskill, both of the Postoffice Department division; Alfred Hale of Pratt & Whitney; J. L. Fulghum, assistant regional superintendent on mail service; D. Henry, Fairchild's chief test pilot; E. L. Green, assistant superintendent of maintenance for United; A. B. Meldrum, Fairchild mechanic.

At the airport to meet the visiting dignitaries were Mayor Earl McNutt and Postmaster F. L. Armitage.

Flying the special plane are Capt. Frank Crismon, flight superintendent for United at Denver, and First Officer Stanley A. Bond.

**First Flight**  
This was the Packet's first flight as a commercial airplane, all previous models having been retained in military service. Flight covers were collected at cities along the route and stamped in flight with a special souvenir cachet.

Eugeneans climbed into the huge hold of the plane Friday morning and looked at the rows of mail bags suspended on sorting racks, each with its own light above it, and as much working space and equipment as the present mail box cars possess.

**Carries Ramp**  
The plane was built for the war department and has a ramp in back which will allow a jeep to be driven into the hold. A nine-ton load is the plane's capacity.

The flying mail car originated in New York on Oct. 1 and flew to San Francisco over the same route which the Postoffice Department pioneered coast-to-coast air mail service in 1920. It continued from San Francisco to Seattle, with stops at Sacramento, Medford, Eugene and Portland.

## Training Meet Set For Home Economists

A training meeting for officers of home extension units will be held at the Community Center Monday from 10:30 a.m. to 3:30 p.m., Miss Maxine Pettyjohn of the home demonstration office in Eugene announced Saturday.

Two state specialists from Corvallis, Mrs. Erna Little and Miss Jean Williams, will serve as instructors at the meeting. Mrs. Little's speciality is family life; Miss Williams', recreation.

Officers eligible for participation in the meeting are chairmen and secretaries of home extension units, music chairmen, child care chairmen and chairmen of the Association of Country Women of the World, Miss Pettyjohn said.

## Grants Pass Gets Support

George S. Barton, Eugene miner and carpenter who lived in Grants Pass for 16 years, Saturday sent a telegram supporting the Grants Pass revolt against CPA work stoppage orders to Earl C. Schweizer, chairman of the Grants Pass Citizens' Protective Assn.

Barton described the CPA as "unworkable and uncalled for bureaucratic administration, unfairly imposed upon the public," and described to Schweizer the Eugene incident in which four carloads of Oregon lumber were shipped from New Caledonia to Eugene, via Seattle, for use in housing project "at a time when our mills were clogged up and shutting down because of congestion of like material."

Barton urged Schweizer to work for a "well considered plan to arrest such bungling" which, he said, is "frustrating housing for the veterans and the public."

The investigation total was 56, with arrests made set at 22. Figures for the Lane County jail, also included in the report, show 37 prisoners for the month—with 2000 costs set at \$401.10, and cost per meal at \$.21.

## 139 Cases Handled By Sheriff's Office

The Lane County sheriff's report for September, released Saturday, shows a total of 77 civil cases and 62 criminal cases handled during the month.

Sheriff C. A. Swartz and deputies traveled 3179 miles in performance of duty during September.

## Lane Girls to Be At Exposition

Maxine and Barbara Bloom of Crow, the top home economics judging team at the state fair, will represent the state of Oregon in this capacity at the Pacific International Livestock Exposition in Portland this week, it was announced Monday by E. A. Danielson, county 4-H Club agent. The contest will be held at 2 p.m. Tuesday afternoon.

The team also won the judging contest at the Lane County Fair, so they will be the representatives of Lane County in this home economics activity.

The livestock team representing Lane County will be Donna Kenyon, Shirley McSpadden and either Myrna Kenyon or Jean Strome, who tied for third place, all of Junction City. Their competition will take place at 8 a.m. Monday. Earl Jager is leader of the Junction City Livestock Club, which produced the winning team.

Joel and James Pynch and Willis Johnson, Cottage Grove, will make up the crops judging team at the contest at 3 p.m. Monday. They are members of the Latham Garden Club.

All of the judging teams went to Portland Sunday for an advance look at the exhibits. They probably will return Monday evening.

## Eugene Hunt Club Sets Sunday Afternoon Ride

A Sunday afternoon ride sponsored by the Eugene Hunt Club is planned for Oct. 6. Ed Davis and Sanford Nemorosky will lead. Anyone interested is invited, the only requirements being a horse and a saddle. The group will leave the fairgrounds riding ring

area at noon, and will be gone about three and a half hours. The ride will be held unless it is actually raining at starting time. Permission has been given to ride through the woods and hills of the large Daly ranch property, west of the fairgrounds.

Mattie Thomas... her home in Eugene... Complete obituary and arrangements will be later by Veatch-Holmes Mortuary.

Russell's



GAY HAND-EMBROIDERED Wool Moccasox

Cushioned soles give cushioned comfort... hand embroidery provides bright contrast. White, red, green and blue. Sizes small, medium and large.

Hosiery Dept.

Russell's



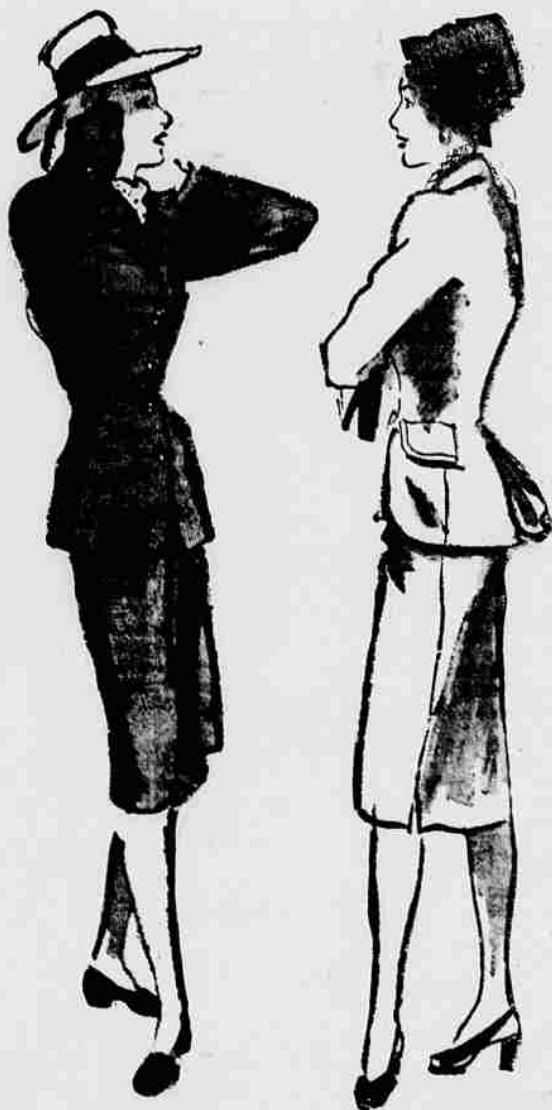
helena rubinstein's new make-up color...

command performance

It's the dramatic contrast of lush red lips against pearly skin. It's Helena Rubinstein's stirring new make-up—COMMAND PERFORMANCE. With her knowing artist's touch, Helena Rubinstein has blended this complete sequence, from foundation to nail lacquer, to bring your own beauty into the spotlight. Wear it by day, wear it by night, to make every moment your COMMAND PERFORMANCE.

- LIPSTICK, 1.50, 1.00
- ROUSE IN CREAM, 2.00, 1.00
- ROUSE COMPACT, 1.00
- FACE POWDER, 3.50, 1.50, 1.00
- CREAM TINT FOUNDATION, 1.50
- NAIL LACQUER, .60

Russell's



"Well-Suited for Fall"

How dashing you are, how well suited for Fall in your versatile new fashion star! Choose from dandy cutaway styles, dramatic plaids, penguins and... Choose from Dandy cutaway costume suits.