

Lane County Fair Winners Listed

Prize-winning exhibitors from throughout the county who showed at the Lane fair and walked off with premiums included:

DIVISION K—DOMESTIC PROCESSES

Class 1—Lot 1, Bread, white yeast, Mrs. Sereatha Gustafson, first; Mrs. E. O. Harris, second.

Class 1—Lot 2, Bread, whole wheat, Mrs. R. O. Evans, first; Mrs. E. J. Edwards, second; Mrs. Earl Durbin, third.

Class 1—Lot 3, Bread, graham or whole grain, Mrs. E. O. Harris, first.

Class 1—Lot 4, Bread, nut or fruit, Mrs. Carl H. Rutherford, Rt. 2, first and second; Mrs. A. G. Lyle, third.

Class 1—Lot 5, Rolls, light (one dozen) Mrs. H. J. Hanns, first; Mrs. R. O. Evans, second; Mrs. Laura Nelson, third.

Class 1—Lot 6, Coffee Cake, Mrs. V. E. Johnson, first.

Class 1—Lot 7, Baking Powder Biscuits, (1/4 dozen) Mrs. H. J. Hanns, first; Miss Ella Marie Baker, Rt. 2, second; Mrs. R. O. Evans, third.

Class 2—Lot 1, Cake, white (loaf) Mrs. C. L. Royds, Rt. 4, first; Mrs. E. J. Hugbrock, Creswell, second.

Class 2—Lot 2, Cake, angel (loaf) Mrs. Walter DeBoer, first; Mrs. Carl H. Rutherford, Rt. 2, second; Mrs. Carl Rutherford, Rt. 2, third.

Class 2—Lot 3, Cake, dark (loaf) Mrs. J. P. Berryhill, first; Mrs. B. M. Johnson, second.

Class 2—Lot 4, Cake, fruit, Mrs. C. T. Royle, Rt. 4, first; Shirley Bower, Rt. 5, second.

DIVISION K—DOMESTIC PROCESS DEPARTMENT

Class 2—Lot 5, Cake, light layer, Mrs. V. E. Johnson, first; Mrs. Carl H. Rutherford, Rt. 2, second; Mrs. Walter DeBoer, third.

Class 2—Lot 6, Cake, dark layer, Mrs. Frankie Callison, first; Mrs. V. E. Johnson, second.

Class 2—Lot 7, Cookies, sugar (one dozen) Mrs. Frankie Callison, first; Lorna Jager, Junction City, second; Mrs. H. J. Hanns, third.

Class 2—Lot 8, Cookies, fruit (one dozen) Shirley Bower, Rt. 5, first; Mrs. H. J. Hanns, second.

Class 2—Lot 9, Cookies, ice box (one dozen) Mrs. B. M. Johnson, first; Mrs. E. O. Harris, second.

Class 2—Lot 10, Pie, apple, Mrs. Napper, Creswell, first; Mrs. Christina Fennel, Rt. 5, second; Shirley Bower, Rt. 5, third.

Class 2—Lot 11, Pie, one crust, Mrs. V. E. Johnson, first; Miss Ella Marie Baker, Rt. 2, second; Mrs. B. M. Johnson, third.

Class 2—Lot 12, Doughnuts, Mrs. Carl Rutherford, Rt. 2, first and third; Mrs. F. A. Russel, Rt. 1, Creswell, second.

Class 2—Lot 13, Gingerbread, Mrs. Carl H. Rutherford, Rt. 2, first; Margaret Baehm, Rt. 1, Springfield, second; Mrs. C. I. Kent, Creswell, third.

Class 2—Lot 14, Chocolate Chip Cookies, Mrs. Carl H. Rutherford, Rt. 2, first; Mrs. Frankie Callison, second.

DIVISION K—DOMESTIC PROCESS DEPARTMENT

Class 3—Lot 1, Cake, not less than four kinds, Mrs. John Bennett, first; Creswell Grange, Creswell, second.

Class 3—Lot 2, Exhibit of canned fruits in glass jars, six different specimens, Mrs. John Bennett, second; Nettie Caird, Jasper, first.

Class 3—Lot 3, Exhibit of canned vegetables in glass jars, six varieties, Mrs. George Heitzman, first; Mrs. Mary Arne, Disston Rt., Cottage Grove, second.

Class 3—Lot 4, Exhibit of canned meats (including meats, poultry, and fish), three varieties, Mrs. David Francis, Creswell, first; Mrs. John Bennett, second.

Class 4—Lot 1, Exhibit of jellies, 6 kinds, Mrs. John Bennett, first; Mrs. Claude Arne, Disston Rt., Cottage Grove, second; Creswell Grange, Creswell, third.

Class 5—Lot 1, Exhibit of preserves, 6 kinds, Mrs. Mary Arne, Disston Rt., Cottage Grove, first; Shirley Arne, Disston Rt., Cottage Grove, second; Mrs. Lee Bettis, third.

Class 5—Lot 2, Pickles, mixed (1 quart) Mrs. George Heitzman, first; Mrs. David Francis, Creswell, second; Shirley Arne, Disston Rt., Cottage Grove, third.

Class 5—Lot 3, Pickles, sweet, (1 quart) Mrs. Mary Arne, Disston Rt., Cottage Grove, first; Mrs. Lula Bettis, Disston Rt., Cottage Grove, second.

Class 5—Lot 4, Pickles, fruit (1 quart) Mrs. George Heitzman, first; Mrs. George Stratton, Creswell, second.

Class 5—Lot 5, Pickles, mustard (1 quart) Mrs. John Bennett, first; Mrs. George Heitzman, second.

Class 5—Lot 6, Chili sauce (1 quart) Mrs. George Heitzman, first.

POULTRY—AMERICAN

Class 1—Lot 1, Banded Rock, C. B. Wheeler, first and second.

Class 1—Lot 2, Banded Rock, C. B. Wheeler, first and second.

Class 1—Lot 3, Banded Rock, C. B. Wheeler, first and second.

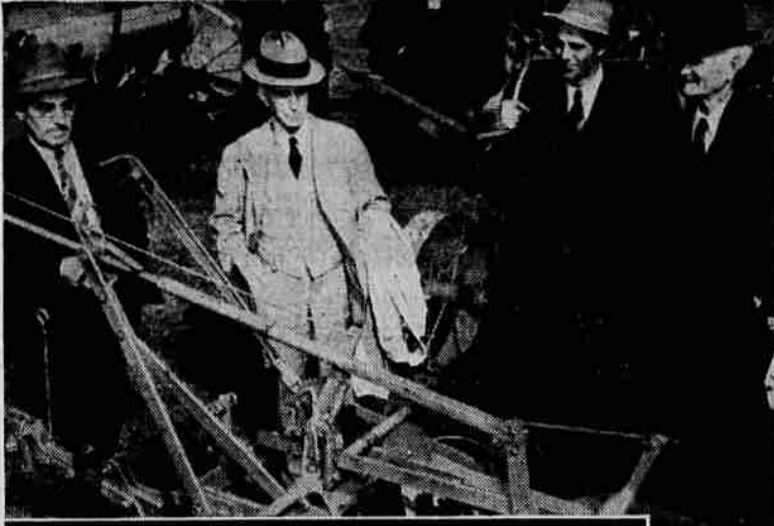
Class 1—Lot 4, Banded Rock, C. B. Wheeler, first and second.

Class 1—Lot 5, Buff Plymouth Rock, Noble Wheeler, first and second.

Class 1—Lot 6, Buff Plymouth Rock, Noble Wheeler, first and second.

Class 1—Lot 7, Buff Plymouth Rock, Noble Wheeler, first and second.

Class 1—Lot 8, Partridge Plymouth Rock, C. B. Wheeler, first and second.



Class 1—Lot 3, Partridge Plymouth Rock, C. B. Wheeler, first and second.

Class 1—Lot 1, Columbian Rock, Oreta Wheeler, first.

Class 1—Lot 3, Columbian Rock, Oreta Wheeler, first and second.

Class 1—Lot 3, White Wyandott, Georgia Dale, first.

Class 1—Lot 1, Silver Penciled Wyandott, C. B. Wheeler, first.

Class 1—Lot 2, Silver Penciled Wyandott, C. B. Wheeler, first and second.

Class 1—Lot 3, Silver Penciled Wyandott, C. B. Wheeler, first and second.

Class 1—Lot 4, Silver Penciled Wyandott, C. B. Wheeler, first.

Class 1—Lot 5, Silver Penciled Wyandott, C. B. Wheeler, first.

Class 1—Lot 1, Golden Laced Wyandott, Noble Wheeler, first and second.

Class 1—Lot 2, Golden Laced Wyandott, Noble Wheeler, first and second.

Class 1—Lot 3, Golden Laced Wyandott, Noble Wheeler, first and second.

Class 1—Lot 4, Golden Laced Wyandott, Noble Wheeler, first and second.

Class 1—Lot 5, Golden Laced Wyandott, Noble Wheeler, first and second.

Class 1—Lot 1, Silver Laced Wyandott, Wayne Morse, first and second.

Class 1—Lot 2, Silver Laced Wyandott, Wayne Morse, first and second.

Class 1—Lot 3, Silver Laced Wyandott, Wayne Morse, first and second.

Class 1—Lot 4, Silver Laced Wyandott, Wayne Morse, first and second.

Class 1—Lot 5, Silver Laced Wyandott, Wayne Morse, first and second.

Class 1—Lot 1, Rhode Island Red, Mrs. Carl R. Pfeiffer, first; Noble Wheeler, second.

Class 1—Lot 2, Rhode Island Red, Noble Wheeler, first.

Class 1—Lot 3, Rhode Island Red, Noble Wheeler, first and third; Mrs. Carl R. Pfeiffer, second.

Class 1—Lot 4, Rhode Island Red, Noble Wheeler, first and second; Mrs. Carl Pfeiffer, third.

Class 1—Lot 5, Rhode Island Red, Noble Wheeler, first.

Class 1—Lot 6, White Rhode Island, Kenneth Wheeler, first.

Class 1—Lot 3, White Rhode Island, Kenneth Wheeler, first.

Class 1—Lot 1, New Hampshire, Lorane Edwards, first; John Samuel, second.

Class 1—Lot 2, New Hampshire, C. B. Wheeler, first; John Samuel, second and third.

Class 1—Lot 3, New Hampshire, John Samuel, first and third; Lorane Edwards, second.

GLIMPSES of what the Lane county fair looked like. Above at the left, J. R. Krenik, Rt. 1, Eugene, Darwin Bristow, A. W. Schneider and Cal Young look over the latest in farm machinery. Center is George Tracer, Junction City FFA boy, with his champion dairy cow, one of his many prize-winning animals. Left above is the attractive Eugene FFA booth. Below, 15-month-old Helen Chamberlain of Eugene gives her approval of prize-winning canning exhibits. Center Bert Denham, FFA and 4-H boy aids Leonard Halderson, left, exhibit his champion pen of sheep. At the right Dorothy Ann Butler, six-year-old from Cheshire, gives the flower exhibit a close inspection. (Register-Guard photos, Wiltshire engraving.)

Class 10—Lot 4, Silver Seabute Bantam, Mrs. C. B. Wheeler, first and second.

Class 10—Lot 1, Dark Cornish Bantam, Wayne Morse, first.

Class 10—Lot 3, Dark Cornish Bantam, Wayne Morse, first and second.

Class 10—Lot 2, Buff Cochon Bantam, Kenneth Wheeler, first; Catherine Wheeler, second and third.

Class 10—Lot 3, Buff Cochon Bantam, Catherine Wheeler, first and second; Mrs. Carl R. Pfeiffer, third.

Class 10—Lot 4, Buff Cochon Bantam, Kenneth Wheeler, first; Mrs. Carl R. Pfeiffer, second; Catherine Wheeler, third.

Class 10—Lot 5, Buff Cochon Bantam, Catherine Wheeler, first; Mrs. Carl R. Pfeiffer, second.

Class 10—Lot 6, Buff Cochon Bantam, Catherine Wheeler, first.

Class 10—Lot 2, Best Male Silver Seabute, Mrs. C. B. Wheeler, ribbon.

Class 11—Ducks

Class 11—Lot 1, Buff Duck, Ona Wheeler, first.

Class 11—Lot 2, Buff Duck, Ona Wheeler, first.

Class 11—Lot 1, White Pekin, Mrs. K. M. Luyher, first; Georgia Dale, second.

Class 11—Lot 2, White Pekin, Mrs. K. M. Luyher, first; Georgia Dale, second.

Class 11—Lot 3, White Pekin, Edsel Chase, first; Milton Chase, second; Homer Chase, third.

Class 11—Lot 4, White Pekin, Homer Chase, first; Milton Chase, second; Edsel Chase, third.

Class 11—Lot 5, Best Duck, Homer Chase, ribbon.

Class 11—Lot 5, Best Drake, Edsel Chase, ribbon.

Class 12—Geese

Class 12—Lot 1, Gray Toulouse, Milton Chase, first.

Class 12—Lot 2, Gray Toulouse, Milton Chase, first.

Class 12—Lot 3, Gray Toulouse, Edsel Chase, first.

Class 12—Lot 6, Best Goose, Edsel Chase, ribbon.

Class 12—Lot 5, Best Gander, Edsel Chase, ribbon.

Class 14—Narragansett Turkeys

Class 14—Lot 1, Merrill Barto, first.

Class 14—Lot 3, Narragansett, Good Brothers, first; Merrill Barto, second.

Class 2—Lot 6, Hereford, (Senior champion bull) C. J. Mahoney, Senior Champion.

Class 2—Lot 9, Hereford, (Cow, 3 years or over) C. J. Mahoney, Rt. 1, Junction City, first and second.

Class 2—Lot 10, Hereford, (Cow 2 years and under 2) C. J. Mahoney, Rt. 1, Junction City, first.

Class 2—Lot 11, Hereford, (Heifer, junior calf) C. J. Mahoney, Rt. 1, Junction City, first and second.

Class 2—Lot 16, Hereford, (Junior champion female) C. J. Mahoney, Rt. 1, Junction City, first and second.

Class 2—Lot 17, Hereford, (Get of sire, four individuals by same sire, any age, either sex) C. J. Mahoney, Rt. 1, Junction City, first.

Class 4—Lot 2, Milking Short-horns (Bull, 2 years and under 3) Ernest McCulloch, first and second.

Class 4—Lot 9, Guernsey (Cow, 3 years or over) G. W. Bond & Son, Rt. 2, Junction City, first and second.

Class 4—Lot 10, Guernsey (Cow, 2 years and under 2) G. W. Bond & Son, Rt. 2, Junction City, first and third; Donald Michael, Rt. 2, Springfield, third.

Class 4—Lot 12, Guernsey (Heifer, junior yearling, not in milk) G. W. Bond & Son, Rt. 2, Junction City, first and second.

Class 4—Lot 18, Milking Short-horn (Get of sire, four individuals by same sire, any age, either sex) Ernest McCulloch, first.

Class 4—Lot 19, Milking Short-horns (Heifer, junior yearling, not in milk) first and second.

Class 6—Lot 10, Holstein (Cow, 2 years and under 2) Folmer Bodtker, Rt. 2, Junction City, first.

Class 6—Lot 14, Heifer, junior calf) Allen Aspey, Disston Rt., Cottage Grove, first; Raymond Webb, Rt. 4, second.

Class 6—Lot 16, Holstein (Junior champion female) Allen Aspey, Disston Rt., Cottage Grove, Champion-ribbon.

Class 7—Lot 1, Guernsey (Bull, 3 years or over) G. W. Bond & Son, Rt. 2, Junction City, first.

Class 7—Lot 2, Guernsey (Bull, 2 years and under 3) D. S. Pruitt, Rt. 2, first; Gerald Flanagan, Rt. 2, Junction City, second.

Class 7—Lot 3, Guernsey (Bull, senior yearling) Folmer Bodtker, Rt. 2, Junction City, first.

Class 7—Lot 4, Guernsey (Bull, junior yearling) J. W. Michael, Rt. 2, Springfield, first; Gerald Calif, Rt. 2, second.

Class 7—Lot 5, Guernsey (Bull, 4 months and under 1 year) G. W. Bond & Son, Rt. 5, Junction City, first and second; Gerald Flanagan, Rt. 2, third.

Class 7—Lot 6, Guernsey (Senior champion bull) G. W. Bond & Son, Rt. 2, Junction City, Champion-ribbon.

Class 7—Lot 7, Guernsey (Junior champion bull) G. W. Bond & Son, Rt. 2, Junction City, Champion-ribbon.

Class 7—Lot 9, Guernsey (Cow, 3 years or over) G. W. Bond & Son, Rt. 2, Junction City, first; Gordon Calif, Rt. 2, second.

Class 7—Lot 10, Guernsey (Cow, 2 years and under 2) G. W. Bond & Son, Rt. 2, Junction City, first and third; Donald Michael, Rt. 2, Springfield, third.

Class 7—Lot 12, Guernsey (Heifer, junior yearling, not in milk) G. W. Bond & Son, Rt. 2, Junction City, first and second; Gerald Flanagan, Rt. 2, Junction City, third.

Class 7—Lot 13, Guernsey (Heifer, senior calf) G. W. Bond & Son, Rt. 2, Junction City, first and second; Lorane Edwards, second.

Class 7—Lot 14, Guernsey (Heifer, junior calf) G. W. Bond & Son, Rt. 2, Junction City, first and second; Donald Michael, Springfield, third.

Class 7—Lot 15, Guernsey (Senior champion female) Bond & Son, Rt. 2, Junction City, Champion-ribbon.

Class 7—Lot 16, Guernsey (Senior champion female) G. W. Bond & Son, Rt. 2, Junction City, Champion-ribbon.

Class 7—Lot 17, Guernsey (Senior champion female) G. W. Bond & Son, Rt. 2, Junction City, Champion-ribbon.

Class 7—Lot 18, Guernsey (Senior champion female) G. W. Bond & Son, Rt. 2, Junction City, Champion-ribbon.

Class 7—Lot 19, Guernsey (Senior champion female) G. W. Bond & Son, Rt. 2, Junction City, Champion-ribbon.

Class 7—Lot 20, Guernsey (Senior champion female) G. W. Bond & Son, Rt. 2, Junction City, Champion-ribbon.

Class 7—Lot 21, Guernsey (Senior champion female) G. W. Bond & Son, Rt. 2, Junction City, Champion-ribbon.

Class 7—Lot 22, Guernsey (Senior champion female) G. W. Bond & Son, Rt. 2, Junction City, Champion-ribbon.

Class 7—Lot 23, Guernsey (Senior champion female) G. W. Bond & Son, Rt. 2, Junction City, Champion-ribbon.

Class 7—Lot 24, Guernsey (Senior champion female) G. W. Bond & Son, Rt. 2, Junction City, Champion-ribbon.

Class 7—Lot 25, Guernsey (Senior champion female) G. W. Bond & Son, Rt. 2, Junction City, Champion-ribbon.

Class 7—Lot 26, Guernsey (Senior champion female) G. W. Bond & Son, Rt. 2, Junction City, Champion-ribbon.

Class 7—Lot 27, Guernsey (Senior champion female) G. W. Bond & Son, Rt. 2, Junction City, Champion-ribbon.

Class 7—Lot 28, Guernsey (Senior champion female) G. W. Bond & Son, Rt. 2, Junction City, Champion-ribbon.

Class 7—Lot 29, Guernsey (Senior champion female) G. W. Bond & Son, Rt. 2, Junction City, Champion-ribbon.

Class 7—Lot 30, Guernsey (Senior champion female) G. W. Bond & Son, Rt. 2, Junction City, Champion-ribbon.

Class 7—Lot 31, Guernsey (Senior champion female) G. W. Bond & Son, Rt. 2, Junction City, Champion-ribbon.

Class 7—Lot 32, Guernsey (Senior champion female) G. W. Bond & Son, Rt. 2, Junction City, Champion-ribbon.

Class 7—Lot 33, Guernsey (Senior champion female) G. W. Bond & Son, Rt. 2, Junction City, Champion-ribbon.

Class 7—Lot 34, Guernsey (Senior champion female) G. W. Bond & Son, Rt. 2, Junction City, Champion-ribbon.

Class 7—Lot 35, Guernsey (Senior champion female) G. W. Bond & Son, Rt. 2, Junction City, Champion-ribbon.

Class 7—Lot 36, Guernsey (Senior champion female) G. W. Bond & Son, Rt. 2, Junction City, Champion-ribbon.

Class 7—Lot 37, Guernsey (Senior champion female) G. W. Bond & Son, Rt. 2, Junction City, Champion-ribbon.

Class 7—Lot 38, Guernsey (Senior champion female) G. W. Bond & Son, Rt. 2, Junction City, Champion-ribbon.

Class 7—Lot 39, Guernsey (Senior champion female) G. W. Bond & Son, Rt. 2, Junction City, Champion-ribbon.

Class 7—Lot 40, Guernsey (Senior champion female) G. W. Bond & Son, Rt. 2, Junction City, Champion-ribbon.

Class 7—Lot 41, Guernsey (Senior champion female) G. W. Bond & Son, Rt. 2, Junction City, Champion-ribbon.

Class 7—Lot 42, Guernsey (Senior champion female) G. W. Bond & Son, Rt. 2, Junction City, Champion-ribbon.

Class 7—Lot 43, Guernsey (Senior champion female) G. W. Bond & Son, Rt. 2, Junction City, Champion-ribbon.

Class 7—Lot 44, Guernsey (Senior champion female) G. W. Bond & Son, Rt. 2, Junction City, Champion-ribbon.

Class 7—Lot 45, Guernsey (Senior champion female) G. W. Bond & Son, Rt. 2, Junction City, Champion-ribbon.

Class 7—Lot 46, Guernsey (Senior champion female) G. W. Bond & Son, Rt. 2, Junction City, Champion-ribbon.

Class 7—Lot 47, Guernsey (Senior champion female) G. W. Bond & Son, Rt. 2, Junction City, Champion-ribbon.

Class 7—Lot 48, Guernsey (Senior champion female) G. W. Bond & Son, Rt. 2, Junction City, Champion-ribbon.

Class 7—Lot 49, Guernsey (Senior champion female) G. W. Bond & Son, Rt. 2, Junction City, Champion-ribbon.

Class 7—Lot 50, Guernsey (Senior champion female) G. W. Bond & Son, Rt. 2, Junction City, Champion-ribbon.

Class 7—Lot 51, Guernsey (Senior champion female) G. W. Bond & Son, Rt. 2, Junction City, Champion-ribbon.

Class 7—Lot 52, Guernsey (Senior champion female) G. W. Bond & Son, Rt. 2, Junction City, Champion-ribbon.

Class 7—Lot 53, Guernsey (Senior champion female) G. W. Bond & Son, Rt. 2, Junction City, Champion-ribbon.

Class 7—Lot 54, Guernsey (Senior champion female) G. W. Bond & Son, Rt. 2, Junction City, Champion-ribbon.

Class 7—Lot 55, Guernsey (Senior champion female) G. W. Bond & Son, Rt. 2, Junction City, Champion-ribbon.

Class 7—Lot 56, Guernsey (Senior champion female) G. W. Bond & Son, Rt. 2, Junction City, Champion-ribbon.

Class 7—Lot 57, Guernsey (Senior champion female) G. W. Bond & Son, Rt. 2, Junction City, Champion-ribbon.

Class 7—Lot 58, Guernsey (Senior champion female) G. W. Bond & Son, Rt. 2, Junction City, Champion-ribbon.

Class 7—Lot 59, Guernsey (Senior champion female) G. W. Bond & Son, Rt. 2, Junction City, Champion-ribbon.

Class 7—Lot 60, Guernsey (Senior champion female) G. W. Bond & Son, Rt. 2, Junction City, Champion-ribbon.

Class 7—Lot 61, Guernsey (Senior champion female) G. W. Bond & Son, Rt. 2, Junction City, Champion-ribbon.

Class 7—Lot 62, Guernsey (Senior champion female) G. W. Bond & Son, Rt. 2, Junction City, Champion-ribbon.

Class 7—Lot 63, Guernsey (Senior champion female) G. W. Bond & Son, Rt. 2, Junction City, Champion-ribbon.