

NEW BARTHOLOMEW FUNERAL HOME HAS OPENING SATURDAY

SPRINGFIELD, Aug. 21.—(Special)—The climax to three months of careful planning and labor comes this week-end as the new P. J. Bartholomew funeral home is opened for public inspection with "open house" Saturday and Sunday, and a dedication Sunday afternoon.

The results of intelligent planning and co-operation are evident in every room of this one-story chapel and office. A distinctive and outstanding addition to the ranks of local firms, it will also hold additional interest for the hundreds who will inspect the place this week-end, for in this new establishment are seen several of the newest features in building.

Indirect Lighting Installed

Although the structure abounds in improved methods and efficiency, two or three may take an especially outstanding place before the public eye. These include indirect and semi-indirect lighting throughout; air-conditioning equipment; and a pleasing, well-modulated expression of charm unaffected by any lavish displays.

The building, located at Sixth and B streets, was purchased by P. J. Bartholomew last May. It was originally a Catholic church. From that time until now, Mr. Bartholomew has been working steadily at the project until he has completed what deserves to be ranked as the major building project in Springfield of the past few years.

The house, as it now stands, is a one-story building, finished in a light green shade, with the roof a darker green. The exterior finish is of shingling. There is a porch at either end of the main building, extending toward the sidewalk. One entrance leads into the chapel; the other to Mr. Bartholomew's office. The surroundings have been carefully landscaped.

Room for 130 People

The chapel, seating 130 persons comfortably, is a 24 by 40 foot room, finished in antique ivory, and the ceiling in light pastels. The furnishings are of antique ivory.

The feature of this room is the indirect lighting, a feature which all public places could afford to adopt. Utilizing the beams which give the chapel an Old English atmosphere, indirect lighting has been installed inside the beams. The result is well worth the trip of inspection.

Another feature of the chapel is furnished by the benches. Not the ordinary, stiff-backed seats of familiar church use, these benches are form fitting, designed entirely for comfort. As a result of Mr. Bartholomew's work, the chapel is thoughtful of comfort in every respect.

In a balcony alcove in the rear of the room, is the place provided for musicians at funerals. An organ is situated there, with provision made for other musicians. It, too, is lighted indirectly. Wine-colored velvet drapes, rich and heavy, drape over stencilled chapel windows, giving an atmosphere of seclusion.

Adjoining the chapel is the family room, 10 by 18 feet, finished very quietly and yet completely. Across from the family room are two slumber rooms, both beautifully done.

On the northeast end of the building is the garage-furnace room. A giant furnace takes care of heating problems; but the owner has been thoughtful enough to install an air-conditioner which will insure a free circulation of air in all rooms.

The north row of rooms includes a wash room, preparation room, and office. Stairs leading to the music alcove are in the office.

Aside from the chapel, semi-indirect lighting is used in all rooms. Carpets are of heavy material and are used on all floor space. Although the building has been constructed with as much fire-proof material as possible, further fire protection is available in extinguishers.

Program Announced

The program for the civic dedication, as announced by Dr. J. D. McCormick, who is in charge, follows:

Organ prelude, Dorothy Mae Potter; male quartet (Paul Potter, Walter Gossler, M. N. Pengra, John Radmore), "Wayfarer's Night"; scripture, Rev. H. E. Wanvig; vocal solo, Mrs. L. W. Coleman, Schubert's "Serenade"; Miss Barbara Barnell, accompanist; talk by Rev. Francis Leipsig; quartet, "The Rosary" and "The Long Day Closes"; talk by Dr. McCormick; prayer of dedication, Rev. Claude O'Brien; number by quartet; organ postlude, Miss Potter.

Dr. Frederick Stricker, state health officer, and Glen Macy, secretary of the Oregon State funeral directors' association, made a special trip to inspect the new chapel Tuesday night, and both offered enthusiastic praise of the structure as being completely modern, one of the best of its kind in the state.

Congratulations

to the

Phil Bartholomew Chapel

WRIGHT'S

516 Main Street

Best Wishes

to the

Phil Bartholomew Chapel

Irish-Murphy Co.

GROCERIES—FRESH FRUITS & VEGETABLES

Best Wishes

to the

Phil Bartholomew Chapel

NOTT & LOGAN

FORD AGENCY

5th and A Streets

Springfield, Ore.

CONGRATULATIONS

to the

PHIL BARTHOLOMEW CHAPEL

from the Bakers of

SUPER TWIRL BREAD



BEST WISHES

to the

Phil Bartholomew Chapel

Springfield Cabinet Shop

4th and C Streets

Best Wishes
to the
Phil
Bartholomew
Chapel

CARL'S
CAFE
407 Main Street

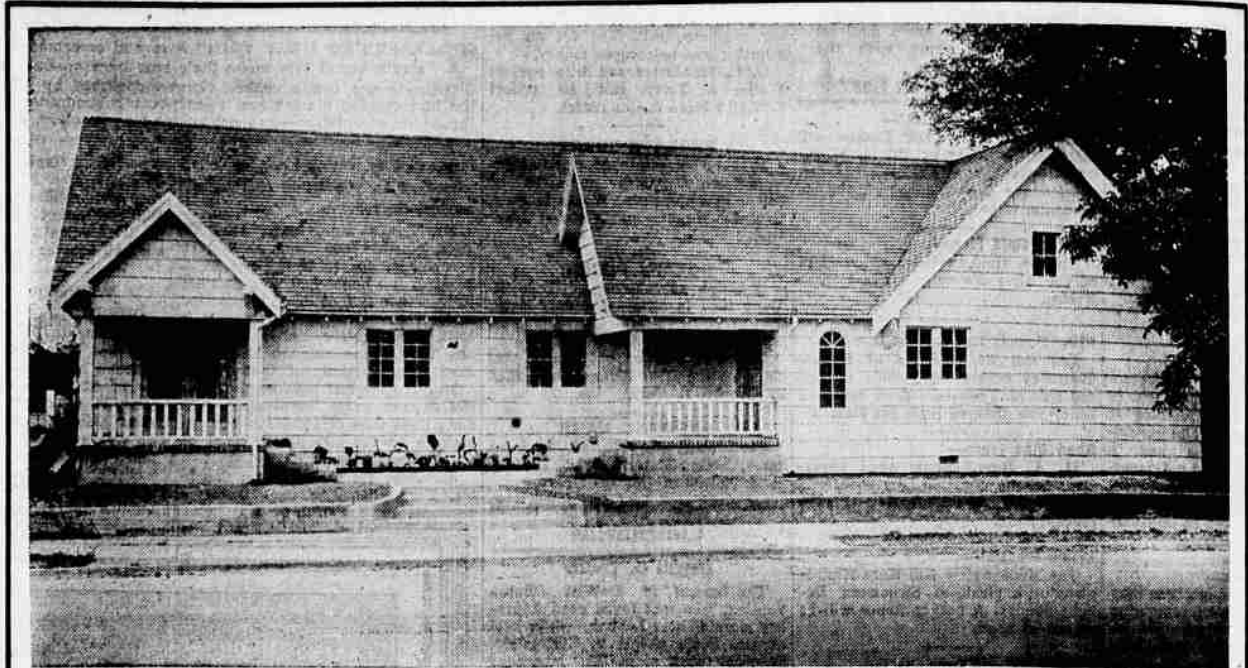
◆ Our Congratulations
and Best Wishes to
Mr. Bartholomew on
the Opening of His
New Chapel.

Rubenstein
FURNITURE COMPANY

CONGRATULATIONS PHIL BARTHOLOMEW CHAPEL

R. E. DAWSON
Interior Decorator
Springfield, Ore.

"Interiors of Distinction"



Phil Bartholomew Chapel viewed from 6th Street
Photo by Carl Baker, Engraving by Wiltshire.

Announcing Public Opening

of the

Phil Bartholomew Chapel

Saturday and Sunday,
August 22nd and 23rd

DEDICATION

Sunday, August 23rd
at 3:00 o'clock

The Public is cordially invited to view this modern, new chapel, modern in every way, pleasing architecture, conveniently arranged, and located in downtown Springfield. Mr. Bartholomew will be especially pleased to have all his friends and the public visit this new chapel Saturday or Sunday, and attend the Dedication, Sunday at 3 o'clock.

Phil Bartholomew Chapel

6th and B Streets

Springfield

Phone 1

