

WOODCRAFT SHOW BUILDS INTEREST IN SUMMER CLASS

A window of woodcarvings, including both local work and European "folk" carving, is on display for the week-end at the Broadway Inc., stimulating interest in the vacation school classes planned for this summer.

In the local carvings, the center of interest is an unusual overmantle screen "Elephants on the March," designed and carved for Mrs. Roy Morse by the Grey Gypsy Craftsmen. It is carved in exceptionally rich local madrona (laurel). Of the European group the salad spoon and fork loaned by Mrs. Sally Allen and the tiny Swiss carved antelope are of special interest.

A dressing table mirror made for Mrs. Clarence Chase of local maple, hand finished in antique honey color is noteworthy and along with many other local woods demonstrates the possibilities of the region for woodcraft.

The idea back of assembling the display is not only the possibilities of several unexploited local woods, but because of the character of the timber industry, the near pioneer background and the rich out-of-doors, but also to show that wood carving is an effective art expression.

As part of Eugene's playground and recreation program for the summer, classes in woodcarving for both boys and girls will be held, carving classes to be under the supervision of the Grey Gypsy Craftsmen, and will also include clay modeling in wood technique, carving in relief, figure carving and puppet making.

No tuition fees will be charged and tools will be provided at 10 cents a week up-keep fee. It is estimated that another dime a week will cover the cost of materials for the projects.

Evening classes for adults and advanced students have been planned with all classes to open Monday, June 24. Classes will continue for 10 weeks.

Egan to Compete in Northwest Tourney

SEATTLE, June 21.—(AP)—H. Chandler Egan, Medford, Ore., national amateur golf champion 31 years ago; five times northwest champion; four times western amateur champion and Walker cup player was due to arrive in Seattle today to practice for the northwest tournament to be played at Seattle Golf club, June 24-29.

Mrs. Vera Hutchings Ford, Seattle, formerly of Vancouver, B. C., will strive for her seventh title now held by Miss Marion McDonald, Portland.

Mrs. Guy C. Riegel, Spokane, will also compete. She won the championship nine years ago.

CASH GRAINS

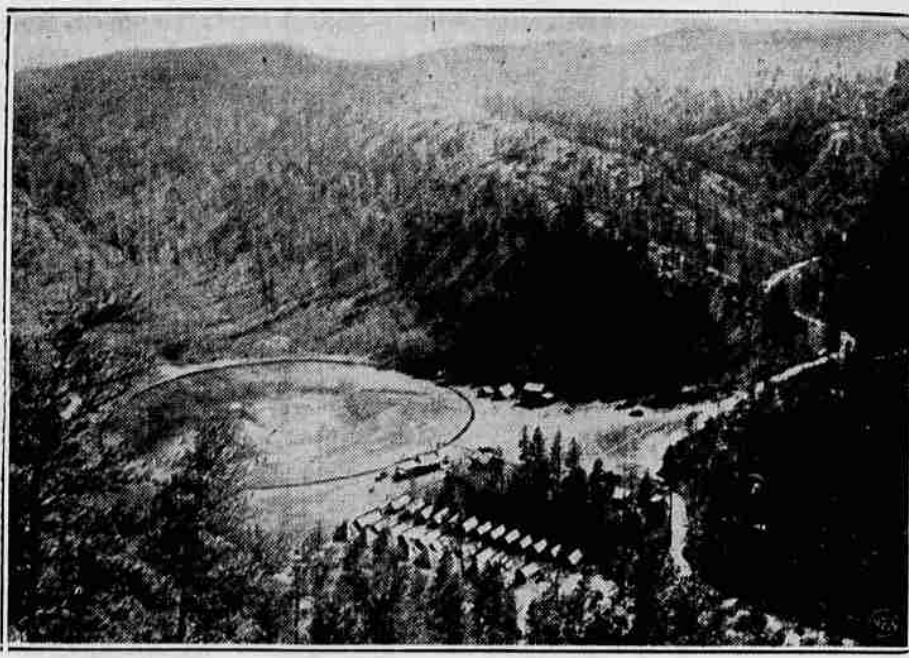
CHICAGO, June 21.—(AP)—Cash wheat, No. 2 red \$1.15; No. 2 hard \$1.14; No. 2 yellow \$1.13; No. 1 white \$1.12; No. 2 white \$1.11; No. 1 yellow \$1.10; No. 2 yellow \$1.09; No. 1 white \$1.08; No. 2 white \$1.07; No. 1 yellow \$1.06; No. 2 yellow \$1.05; No. 1 white \$1.04; No. 2 white \$1.03; No. 1 yellow \$1.02; No. 2 yellow \$1.01; No. 1 white \$1.00; No. 2 white \$0.99; No. 1 yellow \$0.98; No. 2 yellow \$0.97; No. 1 white \$0.96; No. 2 white \$0.95; No. 1 yellow \$0.94; No. 2 yellow \$0.93; No. 1 white \$0.92; No. 2 white \$0.91; No. 1 yellow \$0.90; No. 2 yellow \$0.89; No. 1 white \$0.88; No. 2 white \$0.87; No. 1 yellow \$0.86; No. 2 yellow \$0.85; No. 1 white \$0.84; No. 2 white \$0.83; No. 1 yellow \$0.82; No. 2 yellow \$0.81; No. 1 white \$0.80; No. 2 white \$0.79; No. 1 yellow \$0.78; No. 2 yellow \$0.77; No. 1 white \$0.76; No. 2 white \$0.75; No. 1 yellow \$0.74; No. 2 yellow \$0.73; No. 1 white \$0.72; No. 2 white \$0.71; No. 1 yellow \$0.70; No. 2 yellow \$0.69; No. 1 white \$0.68; No. 2 white \$0.67; No. 1 yellow \$0.66; No. 2 yellow \$0.65; No. 1 white \$0.64; No. 2 white \$0.63; No. 1 yellow \$0.62; No. 2 yellow \$0.61; No. 1 white \$0.60; No. 2 white \$0.59; No. 1 yellow \$0.58; No. 2 yellow \$0.57; No. 1 white \$0.56; No. 2 white \$0.55; No. 1 yellow \$0.54; No. 2 yellow \$0.53; No. 1 white \$0.52; No. 2 white \$0.51; No. 1 yellow \$0.50; No. 2 yellow \$0.49; No. 1 white \$0.48; No. 2 white \$0.47; No. 1 yellow \$0.46; No. 2 yellow \$0.45; No. 1 white \$0.44; No. 2 white \$0.43; No. 1 yellow \$0.42; No. 2 yellow \$0.41; No. 1 white \$0.40; No. 2 white \$0.39; No. 1 yellow \$0.38; No. 2 yellow \$0.37; No. 1 white \$0.36; No. 2 white \$0.35; No. 1 yellow \$0.34; No. 2 yellow \$0.33; No. 1 white \$0.32; No. 2 white \$0.31; No. 1 yellow \$0.30; No. 2 yellow \$0.29; No. 1 white \$0.28; No. 2 white \$0.27; No. 1 yellow \$0.26; No. 2 yellow \$0.25; No. 1 white \$0.24; No. 2 white \$0.23; No. 1 yellow \$0.22; No. 2 yellow \$0.21; No. 1 white \$0.20; No. 2 white \$0.19; No. 1 yellow \$0.18; No. 2 yellow \$0.17; No. 1 white \$0.16; No. 2 white \$0.15; No. 1 yellow \$0.14; No. 2 yellow \$0.13; No. 1 white \$0.12; No. 2 white \$0.11; No. 1 yellow \$0.10; No. 2 yellow \$0.09; No. 1 white \$0.08; No. 2 white \$0.07; No. 1 yellow \$0.06; No. 2 yellow \$0.05; No. 1 white \$0.04; No. 2 white \$0.03; No. 1 yellow \$0.02; No. 2 yellow \$0.01.

NEWSTAND CONVENTION

BEKER, June 21.—(AP)—Fifty magazine men, including publishers representatives from New York City and Chicago and wholesalers from all sections of the Pacific coast gathered here today for the fourth annual convention of the Pacific Coast Independent Magazine Wholesalers' association. Many of the delegates were accompanied by members of their families.

DANCE VAUGHN COMMUNITY CLUB JUNE 22

WHERE WORK IS RUSHED FOR STRATOFIGHT!



The rugged, tree-clad slopes of the Black Hills in South Dakota look down on this new town, where intense activity prevails in preparation for the second stratosphere hop of the National Geographic Society and the army air corps, scheduled for June. The camp of tents and frame buildings is shown, with the winding trails down which supplies and equipment are being rushed. The ring from which the start will be made is clearly outlined in the immense bowl.

PIONEERS TO ASK FOR LANE MUSEUM

(CONTINUED FROM PAGE 1)

plan could be worked out to erect a county relics museum there.

Will Meet at Hill Home

The pioneers are to meet Tuesday at the hillside home of Mr. and Mrs. D. R. Hill, 1839 Garden avenue. Miss Anne Whiteaker, president of the association, and Judge E. O. Potter, secretary, assisted by other active members of the group are working out a varied program for the day. The morning is to be given over to visiting and renewing acquaintances. The basket dinner will be at noon. Each person coming is asked to bring "a well filled basket," that the tables to be spread beneath the trees along the hillside "may groan with their load of good things" as usual. Each family is to bring table service and cream for coffee. The coffee and ice-cream are to be furnished.

Cal Young, too, is tipped off to wear his bathing suit since a little bird says that is his birthday and the proximity of the millrace may recall college days and college pranks.

All persons who have lived in Oregon 50 years or more are given a special invitation since they are known as "the" pioneers.

WOOL REPORT

BOSTON, June 21.—(AP)—The Commercial Bulletin will say tomorrow.

"The announcement of further government contracts has stimulated the wool market, especially on medium qualities, which are most affected, so that prices are back fully to the point where they were prior to the announcement of the supreme court NRA decision and sometimes a cent or so higher.

"New civilian business is slow but deliveries against old contracts are being made steadily in piece goods, as well as in yarns and tops.

"In the west, the market has become active again both in medium and fine wools. Foreign markets are very strong on moderate activity.

"Mohair is firm with good demand moderate."

The Bulletin will publish the following quotations:

Scoured basis:

Oregon: Fine and F. M. Staple 72-73; fine and F. M. Combing 64-65;

fine and F. M. clothing 62-63.

Mohair:

Domestic graded: First combing, 45-46; second combing 38-40; good carding, 33-35; first kid, 55-60; second kid, 50-55.

"Drive-In Market" Inaugurates New System of Shopping

The Drive-In Market, permitting customers to be served without getting out of their cars, has opened at 1222 Willamette street under the management of Norman Pohl and James R. Horn.

A concrete driveway extends to the store front and people may either serve themselves or remain in their automobile. Four clerks are employed to give quick service and a complete line of groceries, vegetables, fruit and meat is featured.

The store will be open from 7 in the morning to midnight, including Sundays and holidays. The newest of equipment has been installed to handle the stock.

New Road May Be Added to R. F. D. 3 Out of Eugene

Patrons of Eugene R. F. D. 3 mail route, extending southwest of the city, have petitions for a change of the route to include the new Briggs hill road now being finished by the county. The county rock crusher that has

been located at the Owen pit south of Crow for some time has been moved to the top of Briggs hill to provide surfacing for the new road.

A postal inspector has gone over the new road and it is said that he has recommended the changes as a duplication of R. F. D. 3 and the Crow stage route which now exists for several miles and besides it will serve a number of mail patrons not now on the rural free delivery route and it will not cut off any patrons, it is stated.

LINDBERGH HELPS NOTED SCIENTIST

CONTINUED FROM PAGE 1

to the growth, differentiation and functional activity of those glands, the discovery of the laws of association of organs, the production in vitro and the treatment of organic and arterial diseases, etc."

To date 20 experiments have been made. They include kidneys, spleen, heart, thyroid gland, ovaries and suprarenal glands.

In only two did infection develop, and that was in the organ before removal. Thyroid glands were kept more than 20 days with pulsating arteries and active circulation.

Unusual Tests Reported

With the organs were removed enough surrounding tissues and arteries to enable them to function. Ovaries and thyroids grew rapidly in their artificial boxes. One ovary developed signs associated with pregnancy.

Although this work is in no sense the artificial production of life, it shows that if scientists find out how to change non-living stuff into living, they can hope to maintain the life thus brought into being.

No description of Lindbergh's new pump was given. It was made this year, the last in a series which he began in 1931.

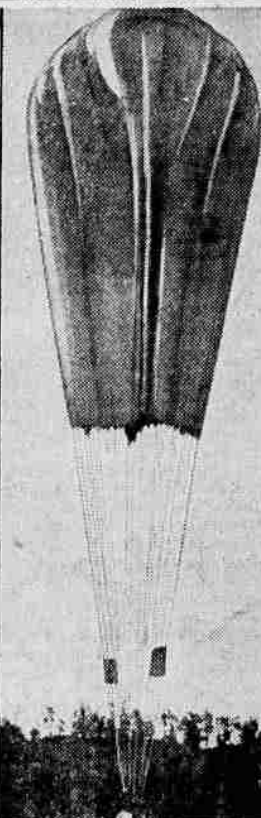
The announcement revealed that the first mechanical heart and lung Lindbergh made was described by him in 1931 in science, without his name appearing.

At Rockefeller Institute it was said the colonel goes and comes as he pleases. His published work was done in the division of experimental surgery. The institute itself later will publish a description of his latest mechanical heart.

The geographic center of Montana is in the kitchen sink of a doctor in Lewiston, according to Montana state surveyors.

There is a collection of 50 rare toads in the Washington, D. C. zoo.

UP AND UP!



This scene—a giant balloon bounding aloft, carrying men and equipment for scientific research in the stratosphere—will be enacted soon in a natural bowl in the Black Hills, near Rapid City, S. D. Commander of the 1935 venture, sponsored by the National Geographic Society and the U. S. Army Air Corps, will be Capt. Albert W. Stevens, right. He will be accompanied by Capt. Arvil A. Anderson, left, pilot. The scene above pictures the start of last year's ascension.

The Bible has been translated in 678 languages and dialects by the British and Foreign Bible Society.

Sturgeons grow to a length of eight feet and a weight of 200 pounds in the Great Lakes.

The population of the world is increasing at the rate of more than 12,000,000 annually.

Producers Public Market

Broadway and Charnelton

FOR YOUR TABLE—
Fresh, Garden Fresh
Lane County Produce

You will find all the fine things raised in Lane county here on the market every day . . . Big selections to make your choice from, too.

NOW ON THE MARKET
Lane County Cherries and Raspberries

James Gardens Market

EUGENE'S FRUIT AND VEGETABLE CENTER
Free Delivery—Also C. O. D. Orders Taken

Watermelons—	ON ICE	Lb. 1 1/2c
Cantaloupes—Large size, 4 for		25c
Oranges—Full of juice, 2 dozen		39c
Grape—Sweet and seedless, 5 for		25c
Outdoor Grown Tomatoes—Basket		25c
Raspberries—3 boxes		25c
Coast Peas—Well filled and sweet, 4 pounds		25c
Yellow Wax Beans—Very tender, 3 pounds		25c
Zucchini Squash and Yellow Summer Squash—2 pounds		15c
Local Beets, Carrots, Radishes, Onions—3 bunches		10c
Cauliflower—White heads, pound		13c
Wild Blackberries for That Pie—3 boxes		29c
Egg Plant, Asparagus, Celery, Cabbage, Limes, Calavos.		

FOR SATURDAY

SALMON Half or Whole Fish, pound **15c**

SHAD—Fine for baking, lb. **10c** LING COD—1/2 or whole, lb. **10c**

CRABS—While they last **2 for 25c**

Newman's Fish Markets
39 East Broadway — and — Producers' Market
Phone 2309 — We Deliver

100% MARKET
SATURDAY FEATURES

• Ham and Veal Loaf—2 Lbs. **35c**

• Fresh Ground Beef—No cereal or fat—2 Lbs. **25c**

• Swift's Premium Ham—Slice 10c or 3 slices for **25c**

• Brookfield Butter, Grade A, Pound **30c**

Consumers Meat Dept.
PUBLIC MARKET
S. E. Corner Market
EXTRA SPECIALS

BEEF ROAST 13c Lb.	SHORTENING 13c—2 for 25c
VEAL ROAST 13c Lb.	LARGE CENTER CUTS HAM 13c—2 for 25c
LAMB ROAST 13c Lb.	LEGS LAMB Pound 13c plus 6c
FRESH GROUND BEEF 13c—2 for 25c	

STALL SPECIALS

VEGETABLE Plants, Fresh Eggs, Butter, Cottage Cheese and Vegetables.
G. P. Smith—STALL 83

STRAWBERRIES — Tomatoes, Lettuce, Cottage Cheese, Walnuts, New Potatoes, Fresh Vegetables.
STALL 24 & 25

FREE PARKING AT THE PUBLIC MARKET

NEW HONEY, 5-lb. pail, 20c; Pints, 18c. Comb Honey, 3 sec. 20c. Local New Potatoes, 7 lb. 13 lbs., 25c.
J. C. Ackerson—STALL 32

FRYERS, Hens, Fresh Eggs, Tomatoes, Cherries, Fresh Vegetables, Cabbage & Celery Plants.
STALL 62

R. I. R. Fryers, Roasting Hens, Fresh Eggs, Cottage Cheese, Strawberries, Raspberries.
J. H. Samuel—STALL 64 & 65

Married Love runs smoother on digestible food!



Mrs. Elian's Recipe for IRISH PUFFS... fried digestibly in digestible CRISCO

2 eggs, well beaten
2 cups left-over mashed potatoes

3 or 4 strips fried bacon
1 tablespoon minced parsley

CRISCO for deep-frying

Beat eggs and potatoes thoroughly. Add bacon, crumbled or chopped, also parsley. If potato is not seasoned, salt and pepper to taste. Drop mixture by spoonfuls in fat-bottomed saucepan filled 3/4 full of melted hot Crisco. CRISCO is the right heat (375-385° F.) when an inch cube of bread browns in 40 seconds. (CRISCO is the right frying fat because it is the creamy, digestible fat—cooks fried foods crispy, not greasy!) Fry Irish Puffs until golden brown. Drain on soft absorbent paper. Serve Crisco. Strain it into a special can and fry with it over and over again. CRISCO keeps digestible!

CRISCO DIGESTS QUICKLY

CRISCO is the registered trademark of a shortening manufactured by Procter & Gamble Co.

Redeem your coupon for

Kellogg's

WHOLE WHEAT BISCUIT

FREE at your grocer's with the purchase of one package of Kellogg's WHOLE WHEAT BISCUIT

Take your grocer the coupon you recently received from the Kellogg Company. Purchase one package and your grocer will redeem your coupon, giving you free a package of KELLOGG'S WHOLE WHEAT BISCUIT

What's the most delicious breakfast you can think of? KELLOGG'S WHOLE WHEAT BISCUIT with berries and cream! Get them at your grocer's today! Fresh, ripe strawberries and Kellogg's Whole Wheat Biscuit—extra crisp, toasted on both sides.

Local grocers invite you to try a full-size package of WHOLE WHEAT Biscuit as Kellogg makes it—crisp, delicious, toasted on both sides. Here's how you can do it free!

Everybody likes shredded whole wheat, and made the Kellogg way it's more tempting than ever. Get your free package today and discover the convenience, economy and appetizing crispness Kellogg gives you in these double-toasted biscuits. Made by Kellogg in Battle Creek.

