

SCOTT DEFENDS STORY

(CONTINUED FROM PAGE ONE)

crete bridges on the coast because of the club's by-laws.

"Perishable" Bridges

Under the topic of the coast bridges, Mr. Scott said the cost was to run to 3 1/2 millions of dollars, plus the sum the state has to bear on administration, overhead, right-of-ways, etc. By the time the coast highway is finished, there will have been spent some \$21,000,000 or \$22,000,000 on it.

"With that cost, do we want perishable bridges?" he asked. The huge spans on these bridges will be from 400 to 700 feet long. Moreover, they will be very high. "There isn't an able engineer in the country or the state of Oregon who would approve the plan to make these bridges of lumber. To build them of lumber is all wrong." He recalled bridges built years ago of lumber with spans running around 150 feet. They had to be built and rebuilt and their whole plan was wrong, Mr. Scott declared.

Treated Wood Little Better

He declared he was speaking as one man and not for the commission as a whole.

Referring then to the approaches, he said they could be made of timber. "They would be like the Longview bridge, perhaps 150 feet high, made of untreated wood. But these approaches are the scandal of the highway world. They are good for 8, 10, or 12 years, perhaps."

Substitutes are either concrete or a composite of concrete and treated wood. Untreated wood is entirely out of the question, Mr. Scott said.

If the approaches were built of treated wood, there would be little saving of money. The crosswood of wood is no stronger than the untreated. Where there are tides there is a continual flowage of drift. If the timbers were bruised they would soon have to be removed, because the preserving is only a thin veneer. California road people have said they can not recommend this type of bridge, he said.

Oregon Pioneers Type

Oregon is the only state to introduce the composite type combining the merits of concrete and wood. No other engineers in the world have done as much for the lumbermen as those in Oregon, he said.

Through the plan of the short span bridges with the spans 25 and 30 feet, this type of construction can be used as a big boom for the lumber industry.

Referring again to the use of concrete, Mr. Scott declared the local lumbermen would sell more lumber in that type than with the timber bridges or composite ones, because there is only one plant in Oregon able to supply the treated woods for the wooden bridges. "That is at St. Helens, where would you Lane county lumbermen be? What would happen if Washington lumbermen underbid?"

Pass Opening Explained

Speaking of the apparent slowness in clearing the McKenzie pass of snow, Mr. Scott pointed out that the work should not be done before "Old Sol" does his work in order to save any money. Requests came to clear the pass in May. The work was done in June.

Even so it cost the state \$2200, or an average of \$1 a car. It would have cost \$500 anyway to clear the final drifts, so the state actually spent \$1800 extra money on the work. Just about that number of cars have gone over, making it about \$1 a car, the speaker said. He asked if those 1800 cars would have paid \$1 for the privilege of going over the pass. Referring to a similar situation on the Mt. Hood loop, he pointed out it was useless to hurry ahead of the sun.

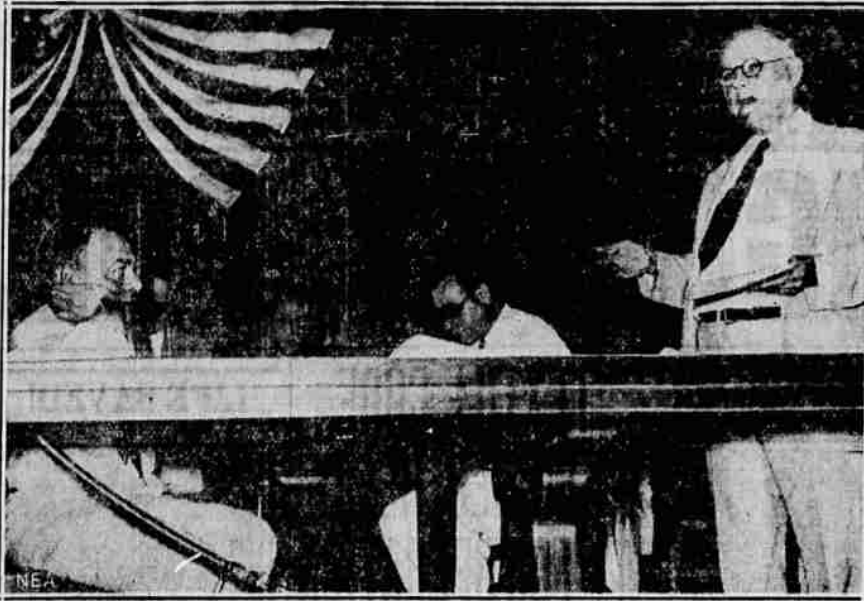
Under the topic of oiling he said it could not be done over dust, but that it had to go on over a hard, heavy rock structure to be done right and to insure any endurance. It is a waste of money to put the oil over dust without the fundamental structure.

The cost is too great to put in all this needed rock structure and grading at once, Mr. Scott said.

Curves Vs. Speed

Going then to curves, he said the commission "got it from both sides" on that subject. There are still many people who want curves in the road because they enjoy scenery, and because they want to feel safer from

JOHNSON, GREEN CLASH AT RECOVERY HEARING!



William Green, president of the American Federation of Labor, right, led opposition to wage and work-hour provisions of the American Textile Manufacturers' fair trade code when its approval by the National Recovery Administration was sought. Green clashed sharply with Gen. Hugh S. Johnson, recovery administrator, left, during the hearing at Washington.

speed demons. Yet the state work is progressing as fast as possible to straighten out the roads, still with an eye on scenery, and yet in line with the newer speed and safety laws. Cars today are being built for a rate of 50 and 60 miles an hour, and the highway program has to keep up with the speed laws. Ten years from now, perhaps, the cars will be for 100 miles speed and the highways will again be obsolete in their program to meet the situation.

All this work, however, is curtailed because of lack of means.

Finances were then taken up. All money for the highway construction this year and perhaps next will come from the federal source.

Stay Within Means

Little or nothing was done by the legislature because of the ultimatum from the people for economy. As result the \$5 license fee was put in, as against the average of \$21.33 from this source last year. With some 200,000 cars affected, this was a huge cut. The legislature increased the gas tax as a way to help, but consumption was cut down because of the advance which came on gas at the same time. The legislature put an additional tax on trucks and the truck men say they will not pay it.

All this difficulty has curtailed the budget. "If the budget is not balanced, we won't issue bonds. It means that the highway maintenance work will be curtailed." He referred to the \$800,000 cut in the payroll

Forest Service Uses County "Cat"

The "30 cut," in other words, one of the county caterpillar tractors, that has been in use on the Sharps creek road extending from the Roy river road toward the Bohemia mines has been borrowed by the forest service and the C. C. C. men located at the Brice creek camp are using it on the road on that creek which also leads to the mines.

The work on the Sharps creek road will continue however, until the widening and straightening of curves originally planned is completed, County Commissioner Crowe said Monday.

The C. C. C. men are doing a fine piece of work on Brice creek, according to P. M. Morse, county engineer, who inspected the work Monday. They are making wide turnouts and otherwise improving the roadbed. The road leading to the camp is in condition, he said.

Baseball Scores

AMERICAN

At Philadelphia (1st game): Chicago 2 12 0 Philadelphia 3 10 2 (Eleven innings). Batteries: Jones, Lyons and Grube; Berry; Grove and Cochrane.

At Boston: St. Louis 9 8 1 Boston 5 7 3 Batteries: Stiles and Shea; Andrews, Kline, Welch and Ferrell.

At New York: Detroit 6 12 2 New York 10 9 2 Batteries: Fischer, Gohsett and Hayworth; Brown, Moore and Dickey, Jorgens.

At Philadelphia (2nd game): Chicago 7 8 0 Philadelphia 1 3 3 Batteries: Gaston and Berry; Oliver, Freitas and Cochrane.

NATIONAL

At Pittsburgh: Philadelphia 2 7 1 Pittsburgh 3 7 2 Batteries: Holly and Davis; French and Kleinich.

About 200,000,000 tons of coal are burned every year in the United Kingdom; 40,000,000 tons are burned in domestic grates.

BREAD PRICES STORY

(CONTINUED FROM PAGE 1)

providing for a retail price of 1/2-cent an ounce, a slight increase over hitherto prevailing prices.

Government experts have figured that the increased prices for wheat and the processing tax should entitle bakers to an increase of approximately 1 1/2 cents a pound for the finished product.

INCREASE EYED

WASHINGTON, July 10.—(AP)—The department of justice today was formulating a policy for dealing with "unreasonable" increases in bread prices coming in the wake of the 30 cents a bushel processing tax on wheat which went into effect with the turn of the week.

Complaints of increases, which Secretary Wallace considers "too high," are being turned over to Attorney General Cummings for investigation and possible prosecution under the anti-trust laws, where the increases are being put into effect by groups of bakers and dealers.

Wallace said he has obtained reports of increases up to 60 per cent. He takes the position that the tax if reflected in full to the consumer, should not increase the price of a pound loaf more than a half cent.

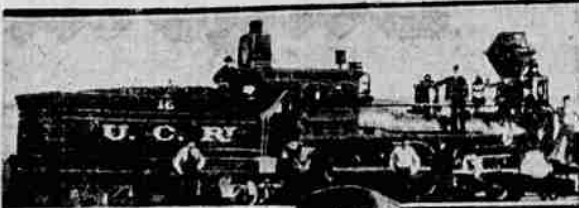
INCOME TAX CHECK BEING MADE HERE

There will be many more state income taxpayers in Oregon next year than before, as the new state law which lowered the exemptions and stepped up the rate will be in effect by that time, according to E. V. Rhodes, who with J. L. Edwards from the state tax commission's office in Salem, is here for a few days. They are auditors sent out by the commission to check up on income tax payments and have visited nearly all the other counties of Oregon. They expect to be here for a week.

Under the new law a single man making \$800 a year or more must pay an income tax and a married man must pay on \$1500 income with an exemption of \$300 for each dependent, and the rate has been stepped up from one to five per cent to two to seven per cent.

The auditors are also checking up on corporation and excise taxes in Lane county. They are investigating alleged delinquencies and checking up on returns of many persons who have filed from Lane county. This is the first state-wide audit that has been made by the tax commission for three years, Mr. Rhodes said. They are working in the office of Assessor Kenney.

OLDEST RAILROADER RETIRES!



Daniel S. Spencer, general passenger agent of the Union Pacific system, retired at Salt Lake City after 53 years' service—believed to be a national record. Spencer went to work as a messenger boy in 1874. Above is a Utah Central locomotive, pride of the line when Spencer started; below, one of the "9000" class used on the same system today.

Several members of the Eugene post of Veterans of Foreign Wars are planning to attend the state convention of the group at Roseburg July 13 to 15. Reports from the burg indicated preparations were being made to accommodate 100 persons at the convention.

Local Vets Will Attend Convention

Major J. E. White, of Eugene, has been named a member of the reception committee for the convention.

The state meet will open Wednesday afternoon with a joint meeting service by the V. F. W. and military, to be followed by a reception for visiting officers, and a reception ball. Thursday will be devoted to the business sessions, with a feature of Friday, the parade, to be followed by the annual convocation for drum corps and drill teams, a "cootie" frolic scheduled for night hours. The final business sessions will be held Saturday, and convention will close with a dance.

Varied Services Held at Church

Leslie Wolfe who has spent years in missionary work in the Philippine Islands spoke at the Christian church Sunday morning. He expects to sail July 25 from Portland accompanied by his daughter and son-in-law, Mr. and Mrs. Johnson, and resume his work in the Islands.

At the evening service, T. E. Edwards who has spent 24 years of service as a missionary in the Congo, Africa told of the needs and of the new day that has come to the end of the dark continent.

Clifford Jope who is pastor of Ninth Street Christian church in Washington, D. C., with his wife were also present for the service. Mrs. Jope is a daughter of Mr. and Mrs. J. R. Harding.

These studies by Prof. V. Hoven on the Bible will continue throughout the month of July. The pastor, Dr. S. E. Child, delivered his third sermon in a general series on the topic of "The Christian Union" at the evening service.

Prominent Persons Fishing M'Kenzie

Several prominent persons are at present fishing on the upper McKenzie, being guided by Billy Price, of the Stockade resort, he reported Monday.

Clarence Kolb, noted actor, and Ty Cobb, famed baseball player, are both fishing the river with Bill Hayward, veteran track coach at the university.

Some 10,000,000 milk bottles go astray every year in England alone.

In 1927, more than two-thirds of Portugal's population of over 6,000,000 were unable to read or write.

MAY BE QUEEN!



Baroness Franziska de Janko (above), prominent leader of Albanian society and well-known in German and Austrian social circles, is betrothed to King Zog of Albania, according to Continental rumors. Reports from Vienna say a definite announcement will be made in the fall.

IT'S HORSEPOWER THAT COUNTS



The four motors in the "Miss America" were originally rated at 2800 horsepower. By using correct fuel and special adjustments they actually develop 6100 horsepower necessary to drive this—the world's fastest motor boat—124.91 miles per hour. Horsepower Counts!

MOTORISTS ARE SWITCHING TO THE GASOLINE THAT IS 2 YEARS AHEAD

... They Want The Increased Anti-Knock Horsepower Of The New "Fortified" Gilmore Red Lion.

Haven't you at one time or another, felt like being extravagant? Haven't you paid an extra-price for gasoline, just to enjoy the feel of real anti-knock horsepower?

Now, you can have this pleasure every day in your car, without the extravagance of using premium price gasoline.

Gilmore has perfected the new "Fortified" Red Lion Gasoline after 2 years experience in the laboratory and on the Speedway. It is built... not merely refined. The molecular formations have been re-formed to develop maximum multi-power. It possesses a high volatility index. It gives your car anti-knock horsepower performance without paying for extra-price motor fuel. You save per gallon and you save per mile.

A trial will convince you that "Fortified" Gilmore Red Lion is 2 years ahead of all other gasolines in Anti-Knock Horsepower. Drive into the Independent station where you see the Checkered Flag, and fill up with this new Gilmore Red Lion Gasoline. Just try it... you'll like it!

GILMORE RED LION
THE "FORTIFIED" GASOLINE FOR ALL CARS
Gilmore
Red
Lion
Gasoline
is the
most
valuable
thing
you
own

NOW—TRAVEL FOR ABOUT
2¢ A MILE
ANY DAY—ANYWHERE ON S-P
SAN FRANCISCO \$12.00 ONE WAY
LOS ANGELES \$19.00 ONE WAY
\$19.35 ROUNDTRIP \$29.00 ROUNDTRIP

What other form of travel offers comfort comparable to the train for 2¢ a mile? These new Tourist Fares are good in Coaches or Chair Cars on our fastest trains—also in Pullman Tourist Sleeping Cars (Coach for the night as little as \$1.50 extra). And in our dining cars you enjoy the delicious "Meals Select"—complete luncheons and dinners for 80¢ to \$1.25, breakfasts for 50¢ to 90¢.
Southern Pacific
A. J. GILLETTE, Ticket Agent—PHONE 2200

Make No Dates For Wednesday Night
If you have a date, by all means cancel it and join the happy crowd of money savers at Eric Merrell's Big Remodeling Sale, starting at 7 p. m. Sharp, Wednesday.
Locked Up Tite
The store will be closed all day Tuesday and Wednesday. During which time, we will be arranging the stock and marking prices down to the lowest level ever quoted on such fine quality.
SALE STARTS WEDNESDAY AT 7 p. m. SHARP.
The Greatest Sale
This is the greatest attempt we have ever made at rapid selling. We are going to remodel our store and must move at least one half of this fine stock of men's wear before starting work.
SALE STARTS AT 7 SHARP WEDNESDAY NIGHT.
See Double Page Adv.
See our double page advertisement Wednesday night. And in the meantime check over your needs. Be in line for Super Values in men's wear when the doors open at 7 p. m. sharp Wednesday night.
ERIC MERRELL
"CLOTHES FOR MEN"
EUGENE, OREGON