

House of the Week Plan of 'Turnabout Home' Flexible

Living Room Can Be Built To Fit View

By ANDREW C. LANG

Now let us present the Turnabout House, which can turn to about the lay of the land that forms your lot!

Is the best view at the front—or at the rear? Wherever it is, that is where the living room in this house goes. The architect, John S. Burrows Jr., has designed alternate plans so that you can choose the layout to fit the location.

Design HW-48 in The House of the Week series has more than mere flexibility to recommend it. A budget-minded home, it yet has many of the features of a high-priced dwelling.

In the living room there is a cathedral ceiling and a Dutch hearth fireplace. There are three bedrooms, 12 closets, an oversized garage with storage facilities, all sliding glass doors leading from the living room to a spacious breezeway.

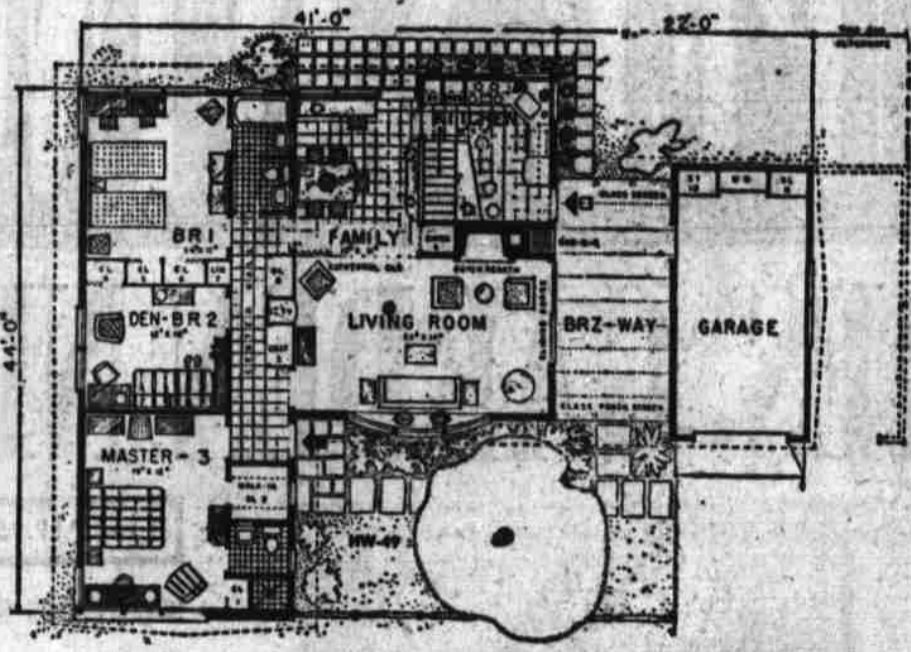
All this is incorporated in a center hall plan that provides excellent traffic patterns.

EITHER VERSION of the Turnabout House covers only 1,485 square feet, exclusive of the breezeway and garage. Yet the design is so neatly formulated that there is enough extra space within its confines to allow for do-it-yourself additions if the family handyman (or woman) is so inclined.

In the front living room plan, the kitchen and family room are side by side at the rear. The kitchen has a dramatic staircase breakfast bar, while the family room combines formal dining, study and activities in a highly livable area.

This section can be entered from the center hall without going through the living room, just as the living room or the bedrooms can be entered without going through any other rooms. This slip-saving pattern is carried out further in the kitchen, where the wall oven, counter top, range, dishwasher and other appliances are arranged compactly for maximum efficiency.

The center hall is wide enough, with its large closets and two bathrooms, to insulate the bedroom wing from the living area, a feature always desirable when chil-



FLOOR PLAN gives you idea of typical furniture arrangement in generous sized rooms.

dren retire earlier than the rest of the family.

BOTH BATHROOMS are generous in size. The master bathroom has a stall shower and the family bathroom is of the divided type that is becoming increasingly popular.

Note particularly this unusual feature of the family bathroom: it has access from either the rear bedroom or the center hall.

The third bedroom, situated between the other two, can be used as a den in the event that it is not needed for sleeping. Even then, a studio couch or one of the various convertibles now on the market would make possible its use as an overnight guest room whenever necessary.

The breezeway, with glass or mesh screening, provides a delightful sheltered outdoor living area. With the sliding doors to the living room open, there is an entertainment expanse of more than 30 feet in one direction.

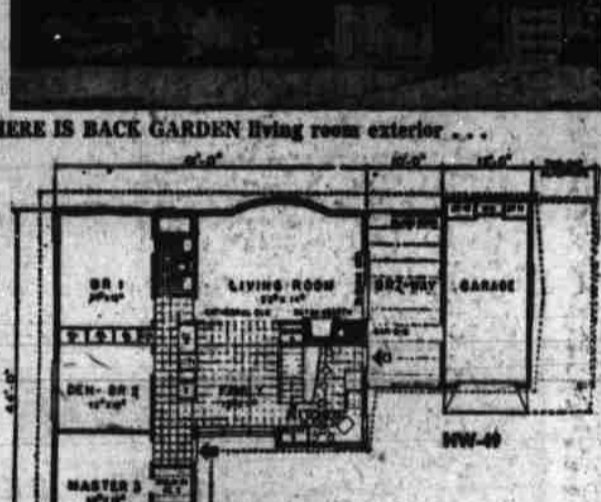
The breezeway barbecue economically uses the same chimney as the living room fireplace. The garage has plenty of room at the rear for storage, a workbench and a closet, and there is a door to the breezeway so that, after parking the car, it is not necessary to go outside again in bad weather.

None of the features of Design HW-48 is lost when the alternate

plan, with the living room at the back, is used. And in either case, the Turnabout House has a pleasant

living exterior, modern yet not trendy, combining charm with dig-

... AND THE TURNABOUT of living room and kitchen.



... AND THE TURNABOUT of living room and kitchen.

Home and Garden . . . Lillie L. Madsen

Answers To Garden Questions

By LILLIE L. MADSEN
Garden Editor, The Statesman

Question—My phlox seem to grow well but become rusty or dry looking. Am wondering what is the trouble and what to do for it. The flowers aren't as large as they should be. Had the same trouble with St. Joseph's lilies. They turn brown and the stalk gets dry even to the blooms. Was told to use ferrous to dust them. Was wondering if this would be for the phlox, too. SLS.

Answer—Trouble with phlox is probably physiological condition as much as disease, and this cannot be corrected by spraying. Too much moisture, too much fertilizer, perhaps not perfect drainage, shade, all contribute to the cause. Over crowded conditions and poor air circulation also help, and will bring about mildew, too. Copper sprays and sulfur dusts help correct the difficulty. Ferrous is quite satisfactory, and will also correct the lily trouble.

Question—Will you tell me what trouble is with enclosed rhododendron leaf? What to do for it? S.D.B.

Answer—Leaf blotch, a fungus disease. Starts at tips or margins and goes on inward. Could be caused by sunburn, winter injury or other physical damage. Pick off worst leaves then spray (after flowering) with a good fixed copper compound spray. Usually this, perhaps leaf troubles can be cured without spraying. If the first leaves are picked off and destroyed, if weather conditions have started the disease, improved weather usually corrects the trouble. Furnish a good mulch, and keep growing conditions good.

Question—In late winter sometime you mentioned a product which would kill cockroaches around interior of old back porch. I thought I had saved clipping but find it has gone. Also would like to kill them around foundation of house. There are some crickets in the latter location, too. S.W.O.

Answer—Believe pyrethrum was the insecticide we suggested for the back porch problem. You can get it at any garden supply store or where agricultural chemicals are sold. Around the foundation of the house, you could use lead arsenate, if manufacturers' instructions are followed carefully. The lead arsenate will take care of both pests. Many of the new sprays under trade names will also serve the purpose.

Question—What is trouble with enclosed ivy branch? Leaves are scaly and sticky and look terrible even before they dry up and will, which they do. The plant is not new, but want to save it. What to do? R.P.T.

Answer—Soft brown scale insect does injury. Summer oil emulsion spray will control it. Put on ivy, wash it off after the scale with clear water or the spray will do more damage than the scale. Nicotine sulphate, applied in soapy solution (also to be washed off) is effective. These pests accumulate more rapidly on plants in poor air circulation.

Question—Want to grow some lime tongues. Was told that you had piece in it or two or three weeks ago, but we are new subscribers and missed it. Have read all garden news since we started The Statesman. Can you tell us how to start them? Was told you said they don't multiply by seed. We dug up one bulb—got root and we dug up a mature. Will this do now? We had hoped it would come up next year. Newcomer.

Answer—Lime tongues do not multiply much by root, but will seed. If you get entire root, and watered the plant, when you set it out, and do not water too much now, it should come up and bloom next year and give you seed. You can also purchase the roots at some places. Multiply chiefly by seed.

Question—A log fell on to our marble hearth and set stains. Am afraid to scrub it to get it off. What to do? C.K.

Answer—Experts say first to remove surface stain by scrubbing with powdered pumice and water. Then dissolve a pound of trisodium phosphate in two quarts hot water and make paste of six ounces chloride of lime in water, and mix the two together in a pottery or stone jar and add enough water to make a full gallon. Stir well and cover, dip flannel pad into clear liquid, after material has settled, cover stain and allow to evaporate. Repeat if necessary.

Green Good

Greens are leaning toward the yellows—clearer than olive but not as raw as chartreuse or towards very pale avocado greens. In the mass market, the leading color, sales-wise in carpets, is cinnamon. (Haze, nutmeg, toast, call it what you will). Gray carpet is slipping. In upholstery fabrics the big sellers are forest and turquoise.

These then are the color trends. Accept them for what they are worth to you as you plan new color for your home. Use the colors which you and your family will enjoy but don't be afraid to be different.

The lowest official temperature registered in the United States—76 degrees below zero—was at Rogers Pass, Montana in 1845, says the National Geographic Society.

Rules Announced for Show Of Salem Garden Council

By LILLIE L. MADSEN
Garden Editor, The Statesman

Salem's Garden Council show, one of the larger floral and garden events in the mid-Willamette Valley, is being put into shape. Eugene Crothers, president of the sponsoring Garden Council assured me early this week. The dates are May 10 and 11 at the Izak Walton League Club House at 561 S. Cottage St.

The public is being invited to the show and there is no entry fee. While professional arrangements will be welcomed, these will not be put into competitive classes. Entries will be accepted on the day of the show from 8 a.m. to 12 noon, and the hall will be open for preliminary work the evening before the show opens. One division has been set aside completely for non-competitive entries, which may be made by individuals or by firms.

Exhibitors are asked to furnish their own containers, and horticulture exhibits must be grown by the exhibitor. In arrangements, the materials do not need to be grown by the exhibitor but must be grown outside. The use of foliage and accessories such as ribbons, candles, mats and figurines is allowed, but flowers must predominate.

Class For Amateurs

If you have never made an arrangement, but have the idea, you can do so, enter the amateur class. There are nine divisions in this "Stick in the Mud," in which driftwood is used; "Bright New Morning," using bright colors; "Lark and Thrushes," featuring curved lines; "The Good Earth," where the container must be in tones of brown; "Spring Breezes," all-foilage arrangement suggesting motion; "Floral Cloud," featuring pink and white; "Showers of Flowers," any type of arrangement which is the exhibitor's favorite; "Opening Day," (Fishing) for men only; and "Wee Trumpets of Spring," under three inches (miniature).

The amateur class is for the exhibitor who has won no more than three blue ribbons in the past. Anyone who has captured four or more blue ribbons in any show or fair will be put into the advanced amateur division.

In the latter division the sections are "When the Buds Swell," featuring budded branches of flowering trees and shrubs; "Rainbow Haphazard," featuring rainbow pastels in a white container; "Storm Weather," depicting a storm; "Country Walk," featuring waxy-leaved material; "Lemon and Lime," featuring yellow and green; and "The Wee Things," the miniature under three inches; "Raminizing," using Oregon dry material, and "Spring House Cleaning," for men only.

Juvenile Division Listed

There are two sections in the juvenile division "May Basket" and "Around the May Pole" in any style under eight inches. Each garden club will be allowed a 30 by 30 inch space in this division. There are garden club cash prizes from \$5 to \$12.50 and the point system will be used in determining the winners of these prizes. A garden club arrangement blue ribbon will receive 35 points, a red ribbon 20 points and a white ribbon 15 points.

In competing for the awards, each person making an entry, should, when registering, specify his garden club and enter its name beneath his own. In this way, the entrant can earn points for his club. A blue in horticulture wins 5 points; a second, 3 points, and a third, 1 point. In arrangements (other than miniatures) a first receives 15 points; a second 10 points, and a third 5 points. In miniatures, the first is 10 points; the second 5 points, and the third 1 point.

There's a place for every type of flower in the horticulture division. In the biennial section, listed are five or more pansies and five or more violas, and a class "for any other type of flower."

Place for Every Flower

The perennial section requires three species blooms in this state, stems or sprays, according to variety. This means, the entrant should have three specimens of a kind, three lupines, three wall flowers, or three of any one flower. This also holds true in the bulbs, tubers, corms or rhizomes, although here, under each type, are also classes for five or more varieties in one group.

There is one section set aside for primroses alone in a potted plant, a single truss, or a three-stem showing, each has its own class.

The council expects roses to be plentiful at the time of the show and has arranged five classes in this section. These include three blooms of one variety, a spray of

West Coast Seeks Aerial Route Okeh

WASHINGTON, April 20 (AP) — West Coast Airlines has asked for authority to operate direct service between Seattle and Pasco-Kennewick-Richland, Wash., by way of Wenatchee and Ephrata-Moses Lake, Wash.

The air line said the tremendous economic development in the Lake areas requires West Coast to provide more direct service to and from Seattle.

West Coast said it wants renewal of the authority granted it last June to operate a daily round trip between Seattle and Ephrata-Moses Lake by way of Wenatchee, with a modification to permit service to Ephrata-Moses Lake from the south.

The air line said a Seattle-Wenatchee passenger now must fly 145 miles by way of Yakima to travel 100 miles. Similarly, a passenger from Ephrata-Moses Lake to Pasco-Kennewick-Richland must fly 183 miles, by way of Wenatchee and Yakima, in order to travel 74 miles.

Garden Calendar

- April 25—Oregon Federation of Garden Clubs, district 15 meeting, Carby High School.
- April 25—Oregon Garden Club spring show, Our Savior's Lutheran Church.
- April 26-27—Rock and Alpine Spring Show, Victoria, B.C.
- April 26-28—Salem Lot's Club Home and Garden Show, State Fairgrounds.
- April 28—Portland Begonia Society, Home of Mrs. George Maurer, 1127 S.E. 190th Ave., Portland, 8 p.m. A clinic on ailing plants. Visitors welcome.
- April 27—American Aricula Society show, Portland Club House, 1135 S.W. Vista Ave., Portland.
- April 27-28—American Primrose Society National Show, Army, Tacoma, Wash.
- April 27-28—Primrose Carnival of Flowers, Sheridan Park Hall, Bremerton, Wash.
- April 27-28—Pear Blossom Festival, Medford.
- April 28—St. Angel Primrose Show, St. Mary's dining hall, 1 to 9 p.m.
- May 1-4—Gresham Garden Fair, Multnomah County Fairgrounds, Gresham.
- May 1-4—Victoria Spring Festival, Victoria, B.C.

Flying Farmer

JUDA, Ill. (AP)—Farming, flying and bus driving are all a part of the daily life of Robert Brunkow, 35-year-old farmer.

His farm is 80 acres. Every morning he flies his light plane to his second job — driving a school bus over a 30 mile course.

About 64 per cent of the world's railway mileage is government owned.

Custom-Made Window Shades and Drapery Shop

- Draperies, Shades, Venetian Blinds
 - Combination Screen and Storm Doors
 - Kirsch Dapery Rods & Hardware
 - Manufacturers of Salem Venetian Blinds
 - Cut to Measure Window Shades
- CAPITAL SHADE and DRAPERY SHOP**
1400 Fairgrounds Road
Phone EM 4-1856

Don't let aphids and mildew ruin your plants and blooms!

Look at the leaves for danger signs. Then control both aphids and mildew in one operation with the scientifically right spray combination.



APHIS such young growth, borers, beet, caterpillars, etc. Use ORTHO Spray, a fungicide (containing calcium polysulfide), controls powdery mildew and several other plant diseases, helps keep new growth healthy.

MILDEW weakens buds, gnaws leaves. ORTHOX Spray, a fungicide (containing calcium polysulfide), controls powdery mildew and several other plant diseases, helps keep new growth healthy.

Make your hose do the work. The ORTHO Spray-Exts, attached to your garden hose, will mix and apply ISOTOX and ORTHOX Sprays in correct dilutions. Makes spraying as easy as watering.



ORTHO

MIDDLE GROVE NURSERY
4920 Silverton Rd.

Send this coupon for your STUDY PLAN

THE HOUSE OF THE WEEK
A Quality Plan Selected by AP Newscasters

YOU CAN GET a study plan for The House of the Week by filling in the coupon and sending it with 25 cents to this newspaper.

This study plan shows each floor together with each of the four elevations, front, rear and sides of the house. It is scaled at 1/4-inch per foot. It includes a guide on "How to Get Your House Built."

You can take this study plan to your bank or other mortgage lender and to your builder and get rough estimates on cost.

With this information you will know whether you want to proceed with construction by ordering working blueprints direct from the architect and asking for bids.

The Oregon Statesman
Salem, Oregon

Building Editor:
Enclosed is 25 cents. Please send me a copy of the study plan for The House of the Week, Design HW-48.

NAME _____ (Please Print)
STREET _____
CITY _____ STATE _____

Blue Ribbon for Oregon



Oregon's display in the fourth annual "Profile of the States" flower show at Ft. Worth, Texas, won a second place ribbon. Gov. Robert D. Holmes reports. Oregon was represented by three separate exhibits, all combined into an Oregon display. The blue ribbon winner of fruits, nuts, and chrysanthemums was designed by members of the Mary Daggatt Lake Garden Club of Ft. Worth.

HOME REPAIR DOs and DON'Ts

- DO... remember when you do not specify a particular kind of plywood, the kind you usually get is fir plywood, which is strong and inexpensive.
- DO... give the finishing of fir plywood extra attention, otherwise its wild grain will produce unpredictable and perhaps undesirable results.
- DO... buy a special type of primer-sealer made especially for equalizing the density of the hard and soft grains of fir plywood.
- DO... for a natural finish, sand the surface, apply a clear primer-sealer, resand, apply a thin coat of white shellac, sand very lightly and then put on two coats of the desired paint.
- DON'T... forget the usual pre-finishing steps—filling nail holes and blemishes, removing dirt, dust and grease.
- DON'T... overlook the possibility of getting a pickled effect on fir plywood by putting on the white primer-sealer and then rubbing it off after about 3 minutes; expired primer on acrylic to get the desired effect.
- DON'T... neglect the plywood edges, which can be covered with mounding or the new wood veneer trim—or sanded thoroughly and stained to accent rather than hide the piles of wood.
- DON'T... use ordinary fir plywood outdoors; an exterior grade is available for use where the project will be exposed to the elements.
- Comanches were the first American Indians to become nomads when they drifted down into Texas and New Mexico in the early 1700s to acquire horses from Spaniards.

Blues Most Popular Of 1957 Spring Colors

Just let the sun shine a few days and homemakers want to do some decorating and most often it is painting that they will be considering. The important decision is color. Every color imaginable is available but there are important trends in color this season, according to Erlina Fisher, Maxjon County extension agent in home economics.

National Park Pictures Head Society Program

At the Tuesday night meeting of the Salem Camellia and Rhododendron Society, Eugene Kennedy will show colored slides he took of the Teton National Park, Yellowstone, Glacier and Rainier Parks during the past summer. Members are invited to bring a guest to the meeting which will be held at the YMCA at 8 p.m., reports E. C. McElroy, program director.

Washington Halts Securities Sale

SEATTLE, April 20 (AP) — The Kaiser Development Corp., Ltd., of Canada and its agents have been ordered by the Washington State Department of Licenses to stop selling or offering for sale its securities in this state, J. C. Baillie, securities administrator, said Thursday.

Donna Atwood Asks Divorce

SANTA MONICA, Calif., April 20 (AP) — Former figure-skating star Donna Atwood sued wealthy John H. Harris for divorce Friday. Harris is majority stockholder in Ice Capades, Inc.