

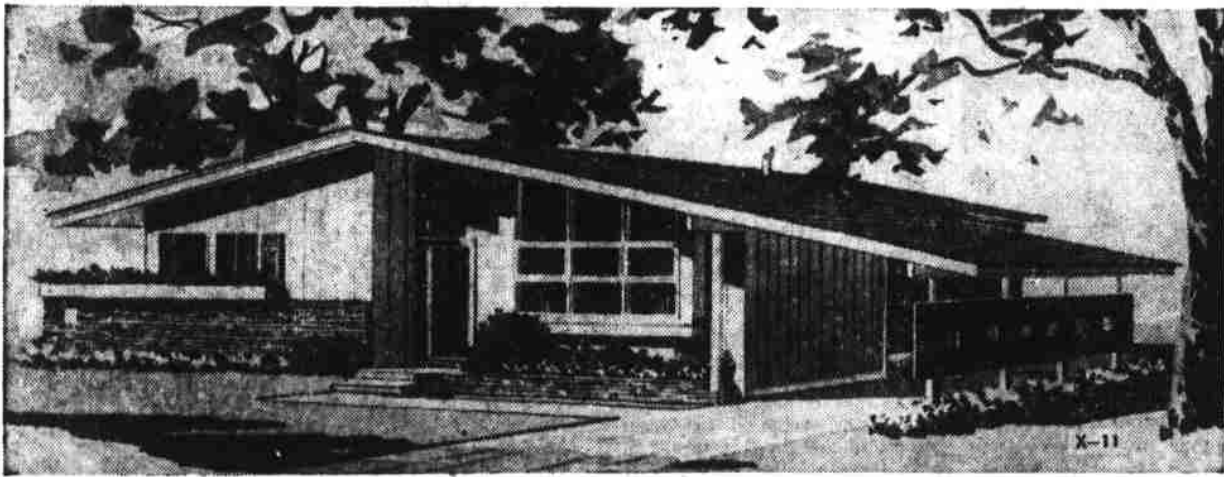
Gadabout

Home, Garden, Travel

By Lillie L. Madsen

House of the Week

Luxury Home Available on Budget



THIS RANCH, designed for budgeted families, has a wealth of details customarily found only in higher priced homes. Its six rooms can be increased to eight by completing an optional basement plan. Three bedrooms are in a wing at the left. The living areas include a dropped living room with cathedral ceiling.

3 Bedrooms Planned Into Limited Space

By JOHN O. B. WALLACE
With imaginative planning, luxury traits can be built into an economy-size home. This ranch, although small in area and designed for budget builders, has many details found usually in higher priced residences.

Designated X-11 in the House of the Week series, it has six rooms (including three bedrooms) in an area of 1,000 square feet. The plan has further appeal to the budget-conscious builder because of an optional basement.

Its interior features include a dropped living room with cathedral ceiling, a balconied dining room, a raised dining terrace and a circular rear patio. By finishing the basement, you can add an adult

recreation room with a television and hi-fi center and a children's play room.

Although building and material costs vary greatly throughout the country, Architect Herman H. York, who developed design X-11, estimates the basement area can be finished for perhaps an additional \$1,500.

Finishing Touches Later

The architect suggests that the separating walls, window arrangements, doors, plumbing and other structural details be installed at the time of construction.

Wall finishes, floor coverings, folding doors, bar and cabinets and other finishing touches can be added later at the convenience of the owner.

On the main level, the dropped living room is one step below the rest of the house. The cathedral ceiling and the ceiling-high window wall, the latter set in a recessed bay, create an illusion of greater space.

The adjoining dining room is one step above the living room and sits on a shallow balcony, separated from the living room by a wrought iron railing. The bedroom wing can be reached from the living room or the dining room-kitchen area.

Kitchen at Rear

The kitchen is in a rear, corner setting to permit maximum light and ventilation. It is large enough to accommodate a breakfast nook and it has been planned to provide a maximum amount of work space and cabinet storage areas.

Because the bedroom wing can be reached from two service ways, the house has an excellent circulation pattern which minimizes unnecessary walking.

Terrace Is Sheltered

Sliding glass doors separate the living room and the raised dining terrace, and one wall of the dining room is glass, which tends to merge indoor and outdoor dining areas.

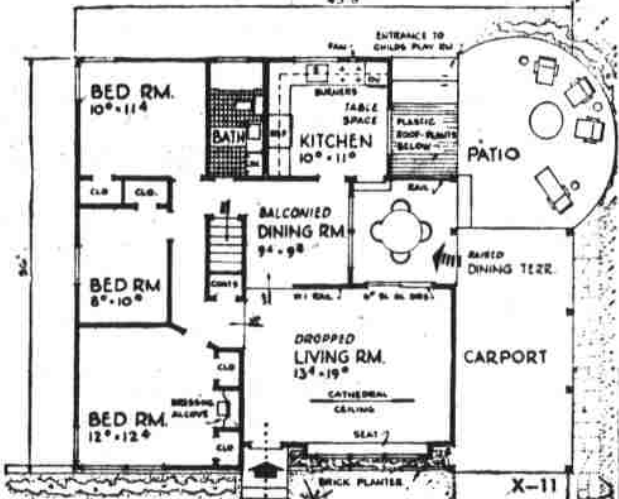
The outdoor dining terrace is sheltered on two sides by the living and dining rooms and is partially sheltered on the other sides by the kitchen and the carport.

There is direct access to the outdoor dining terrace and the patio from both the front living room and the rear kitchen.

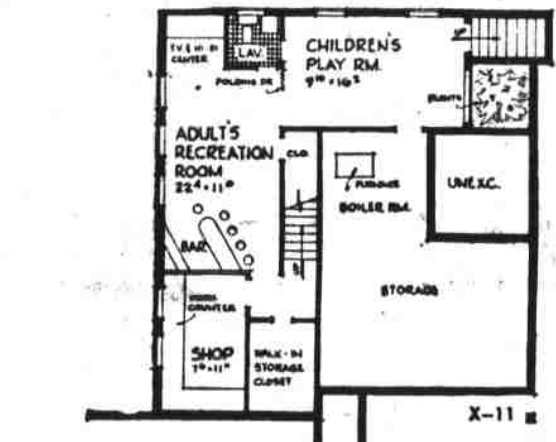
In the basement, the two recreation rooms may be closed off by folding doors—or they may be thrown open into one large room for special occasions. A lavatory, between the two recreation rooms, may be entered from either room.

A work shop, walk-in storage closet, open storage area and boiler room complete the basement plan. A separate exit from the children's play room permits youngsters to come and go at will without entering other parts of the house.

Exterior details include vertical boards on all sides with some brick veneer at the front, asphalt shingles for the roof and brick planters.



THE MAIN LEVEL is shown in the plan above. The future layout of the optional basement plan is shown below.



Questions & Answers

QUESTION—To settle an argument, would like to know if it is better to mow your lawn when the grass is dry or wet. I think it should be dry. Ardent Reader.

ANSWER—We're inclined to agree with you, although nowhere have we been able to find anything which substantiates our belief other than that any work on the lawn when it is wet tends to pack the soil and packed soil is not conducive to good growth.

QUESTION—We got into an argument about when irises should be replanted. I say they should be replanted in July and my husband says October. Which is correct? P.S. The argument is friendly and we've decided to let you settle it. M.J.

ANSWER—We are glad you added the P.S. Iris experts such as Bob Schreiner and Rholin Cooley say best time to divide and replant is July, August and early September.

QUESTION—To settle an argument tell me how high lawn grass should be cut? I say it should be cut quite short. If it is long and then cut short, the grass drows close to the ground bleaches. L.D.

ANSWER—(No we did not make this up. It just seems our readers have become argumentative. There's another couple coming.) An even height should be maintained. If it

is cut low once, high once, low again, bleaching will result. However, height of cut should rise with the temperature. Best cool season heights are: Delux fancy lawn grass, 1 inch; good lawns, 1 to 2 inches; utility lawns 1 1/2 to 2 inches. Raise these mowing heights 1/2 inch when the heat of summer (like this past week) sets in. Meanwhile frequent mowing is best on both old and new lawns so as not to remove too much of the plant at one clipping.

QUESTION—Came across a story the other day (in a book) which called "Utah, the Mother of Irrigation". Can you tell me why? Curious.

ANSWER—The Mormons, who came to Utah in the eighteenth century, dammed a creek that flowed across what is now part of the present Salt Lake City and began irrigating crops in the fertile but very dry valley of the Great Salt Lake. They have been credited with introducing the first irrigation practiced by Anglo-Saxons in the United States.

QUESTION—We are planning to go to Lake Louise in September but friends tell us it is closed after Sept. 1. Can you give us any information on this? We mean the Lake Louise at Banff. Please give all information you can. E.N.M.

ANSWER—We're a little puzzled.

QUESTION—We are planning to go to Lake Louise in September but friends tell us it is closed after Sept. 1. Can you give us any information on this? We mean the Lake Louise at Banff. Please give all information you can. E.N.M.

ANSWER—We're a little puzzled.

QUESTION—We are planning to go to Lake Louise in September but friends tell us it is closed after Sept. 1. Can you give us any information on this? We mean the Lake Louise at Banff. Please give all information you can. E.N.M.

ANSWER—We're a little puzzled.

"She wants to sleep at our cool house"

PERFECT CLIMATE FOR SUMMER SLUMBER WITH MUELLER CLIMATROL COOLING

Yes, there's a lot more enjoyment to living in a Climatrol-cooled home. Air is cleansed of dust, pollen and the pesky part of humidity six times each hour. What's more, there are Mueller Climatrol units to suit any budget. Call soon.

Mueller Climatrol.
...EASY TERMS...

Convenient, Clean, Low Cost Natural Gas
No Money Down—36 Mos. to Pay

D. E. COOPER & SON
540 Hood St. Ph. EM 3-3603

Calendar Of Events

- June 22—Arabian Horse Show, State Fairgrounds, 1:30 p.m.
- June 22—Sisters Rodeo, Sisters.
- June 27-28—Victoria Horticulture Society Show Crystal Place, Victoria, B. C.
- June 28-29—Chehalis-Centralia Roe Show, Lewis County Fairgrounds, Wash.
- June 28-29—Fuchsia Show, California Fuchsia Society, Long Beach Municipal Auditorium.
- July 2-6—Marin Art and Garden Fair, Ross, Calif.
- July 2-4—World Champion Timber Carnival, Albany.
- July 3-5—St. Paul Rodeo, St. Paul, Ore.
- July 3-6—Molalla Buckaroo.
- July 4-6—Agricultural Fair, Odense, Denmark.
- July 4-5—Rose Show, Windsor Castle, London, Eng.
- July 4—Happy Days Celebration, Hillsboro.
- July 4—Willamette River Days, Salem.
- July 4-5—Water Pageant, Bend.
- July 7-9—Pugent Sound Lily Society Show, Frederick & Nelson, Seattle.
- July 11-13—Santa Barbara National Horse and Flower Show, Santa Barbara, Calif.
- July 17-18—Annual Show and meeting of North American Lily Society, Hart House, Toronto, Calif.
- July 18-20—Oregon Square Dance Festival, Springfield.
- July 18-20—Yodeling Festival, Olten, Switzerland.
- July 21-26—Royal International Horse Show, London, Eng.
- July 22-Aug. 25—Wagner Festival, Bayreuth, Germany.
- July 24—Lebanon Herb Tea.
- July 25-27—Dallas Smileroo.
- July 26-27—Chief Joseph Days, Joseph.
- July 27—Valley Women's Club Hotcake Breakfast, Amity City Park, 6:30 to 11:30 a.m.
- July 28-Aug. 2—Santiam Bean Festival, Stayton.
- July 28-Sept. 4—Oregon Shakespearian Festival, Ashland.
- Aug. 6-8—Irish Flower Show, Dublin.
- Aug. 8-10—Crooked River Round-up, Prineville.
- Aug. 21-22—San Francisco Flower Show, San Francisco, Calif.
- Sept. 13-16—Grape Harvest Festival, Jerez de la Frontera, Spain.
- Sept. 21-Oct. 7—Dance and Music Festival, Seville, Spain.

Lake Louise isn't the name of a hotel at Banff. It is a resort 40 miles to the north of the Banff resort although in the national park. At Lake Louise there is a hotel called Chateau Lake Louise. There is also a Lake Louise Lodge, and a number of other lodging places, including some motor courts, and folk with private homes open to visitors during the tourist season. The Chateau closes the second week in September and the Lodge the last of September. The Chateau is the most costly. Banff has any number of places to stay, most elaborate of which is Banff Springs Hotel.

Tiny Flowers Proflic, Big Flowers Few

It's a true thing that in flowers the number of blooms produced by a single plant is closely related to the size of the blooms themselves. The most gigantic flowers are produced sparingly, but the tiny ones come in great numbers. So if you admire great masses of bloom, then you should select strains that produce relatively small flowers.

Now here are some lists of flowers grown from seed that are arranged according to the size of the flower. All these varieties are very free bloomers. The lists are arranged in sub-headings, too, which indicate which kinds bloom over a long period and which ones give a relatively brief but tremendous display of many flowers.

Small Flowers

Flowers with blooms under 1 inch across, long blooming period: Zinnia linearis, orange flowers, dwarf plants; marigold gnome, golden yellow blooms, 10" tall; scarlet sage (salvia), different heights available; sweet alyssum, best varieties—royal carpet and carpet of snow—very dwarf; globe amaranth (gomprena) buddy, dwarf plants with purple, clover-like blooms; ageratum (floss flower), fluffy blue flower. Brief blooming period: Candytuft, many colors available; baby's breath (gypsophila), tiny white blooms; virginian stock (malcomia), very dwarf; chinese forget-me-not (cynoglossum), sky-blue; anchusa blue bird, indigo blue, 2 ft. tall.

Larger Blooms

Flowers with blooms 1 to 1 1/2 inches across, long blooming period: Zinnia red riding hood (glacillima) miniature, double scarlet flowers, plants 1 1/2 to 2'; zinnia cupid, many colors, dwarf compact plants; cornflowers (centaurea cyanus), blue, pink, white; marigold sunseeker, orange flowers, 6"-8" plants; marigold lemondrop, canary yellow, 6"-8" plants; marigold harmony hybrids, several colors, 1 ft.; phlox, several varieties, many colors; vinca (periwinkle), pink or white, heat-proof. Brief blooming period: Anagallis, bright blue or salmon red.

Sweet Peas have florets about this size, too, and of course the length of blooming period depends on the weather. If it's cool the vines keep right on bearing; hot weather cuts the crop short. You can extend the blooming period of sweet peas by keeping the flowers picked to prevent seed from setting. Most of the other flowers listed above, however, keep right on blooming without having to pick the old flowers from the plants.

Scale Insects Controlled by Proper Sprays

Scale insects and diseases are not usually recognized by the average home owner because their colors blend so closely with the bark of trees or shrubs. Often the scale insects number many thousands, and sucking the sap of the trees, either to kill it eventually or seriously weaken it so that it is attacked by other insects.

Scale insects are easy to control. Scale on small shrubs or trees may be controlled by dormant oil sprays. On the larger trees a hydraulic sprayer is used in order to reach all parts of the tree, and since various scale insects require different spray formulations, an arborist or tree expert should be consulted.

It's an Idea

Every child's dream—a lapel button admitting him to movie theaters free will be given to young visitors to Ocean City, N. J., during the week of June 23-30. The fourth annual Children's Festival Week allows parents to take along a child free for every adult, paying half-price for the child's meals and nothing for his room. In addition to free movies in board-walk theaters every night but Saturday, the buttons will entitle children to other free and half-price attractions ranging from pool swimming to speedboat rides. This brings out a lot of folk in what otherwise might be a dull season, and it pays off, say sponsors.

The Oregon Statesman

Statesman, Salem, Ore., Sun., June 22, '58 (Sec. II)- 9

New Air Terminal Ready for Jet Age Service

COPENHAGEN—A new facility in mid-town Copenhagen will be ready for jet-borne passengers early in 1960 when Scandinavian Airlines System's DC-8 jets go into service. This is the \$4,300,000 SAS-Center—an ultra-modern 22-story building, to include the SAS air terminal; the 475-guest Royal Hotel, Scandinavia's largest; a service station and 200-car garage. Facilities will include an air travel bureau, bank, car-hire service, bars, shops, restaurants, drawing rooms for private parties, beauty salon, barber shop, nursery and SAS offices. The terminal, SAS officials predict, may be in operation as early as October of this year.

Don't Hack Trees, Have Them Pruned

So the electric light company wants to prune your trees to provide ample clearance for wires? Trees can be pruned to preserve their beauty and, at the same time, allow ample clearance for utility wires, according to the National Arborist Association. The only thing the home owner has to consider is that the pruning job is done by an arborist or tree expert. Hacking away at trees by the inexperienced not only can destroy the shapeliness of a tree but sometimes can kill it outright, it is said.

According to the arborists, however, most utilities use extraordinary care in preserving trees. The best bet, if the homeowner is planting new trees is to set them out where they will not interfere with electric and gas service lines when fully grown. In cases where trees must be planted under electric wires, low-growing varieties should be selected, reserving the larger growing trees for other parts of the property.

Many utilities use local arborists or tree experts in pruning trees under, or close to utility service lines. Generally, their men are highly trained, but if in doubt about the method of pruning prized trees the home owner may consult with another recognized authority, in order to work out a compromise that will be satisfactory.

Most utilities use exceptional care in pruning trees near their lines and today there are fewer complaints of this nature than in past years.

RENT-A-TOOL
Do It Yourself, It's Cheaper.
Serving Salem Since '48
HOWSER BROS.
1180 South 12th St.

GENERAL ELECTRIC HEATING SYSTEMS

By **DAY HEATING CO.**
225 Division St. Ph. EM 3-4822
Nothing Down — 5 Yrs. to Pay
First Payment in October

SWIM in Your Own BACKYARD!

Three sizes of Plastic lined pools for do it yourself projects, or we will construct it for you.

12' by 27'	Do It Yourself	Completely Installed With Filter System
	\$ 575.00	\$1875.00
16' by 32'	\$ 785.00	\$2626.00
20' by 40'	\$1075.00	\$3436.00

Call Tom Burton, dial Operator 22-F-3, or Mrs. Arlene Brown, EM 2-6713. No Charge.

"Gunite" Swimming Pools Built by John Medford

OREGON'S OLDEST AND BEST-KNOWN PRIVATE AND PUBLIC POOL CONSULTANT AND BUILDER

Famous Gunite Pools from \$50 Lin. Ft.

- "Gunite" resists moisture penetration, alkalies, acids, high heat, and sub-zero weather conditions.
- The most durable material you can use for your new swimming pool.
- "Gunite" pools save you money now, and years later. Compare the price and quality before you buy and you can save money, and still get the best!

Pools built any size... any style... anywhere. Our pools are fully guaranteed and I will gladly furnish list of personally satisfied customers over the past 6 years.

National Gunite Co.
1615 North 19th St. Phone Anytime EM 4-5275

"COMPARE" Before You Buy!

Check Why Forced Warm Air Heating Is Better. Healthier — Better Circulation — Stops Mildew — Warmer Floors — More Economical — Helps Prevent Paint Peeling — Less Dry Rot.

For more information call one of the members of the Salem Warm Air Heating and Air-Conditioning Assoc.

DAY HEATING CO.
MONTGOMERY WARD & CO.
D. E. COOPER & SON
SALEM HEATING & SHEET METAL
CHAS. W. McCABE
CAPITOL HEATING & SHEET METAL
REIMANN SHEET METAL CO.
ROY K. LOCK
JUDSONS PLUMBING & HEATING
C. J. HANSEN & CO.
PORTLAND GAS & COKE
WESTERN STEEL & SUPPLY CO. — Dallas, Oregon

SHAKE PAINT FOR ROUGH LUMBER SURFACES

Forms Attractive Flat Finish, Tough Long-Lasting, Choice of Western Colors.

- ★ REDWOOD
- ★ CONSTOCK GRAY
- ★ HILT GREEN
- ★ SANDALWOOD
- ★ WESTERN WHITE
- ★ DAWN YELLOW
- ★ CORONADO GREEN
- ★ GRAY GREEN
- ★ DEEP BROWN

Reg. \$5.50 Gal.
SALE PRICE \$3.95 Gal.

SAUER PAINT CO.
PHONE EMpire 4-0512
FLOORCOVERING WALLPAPER