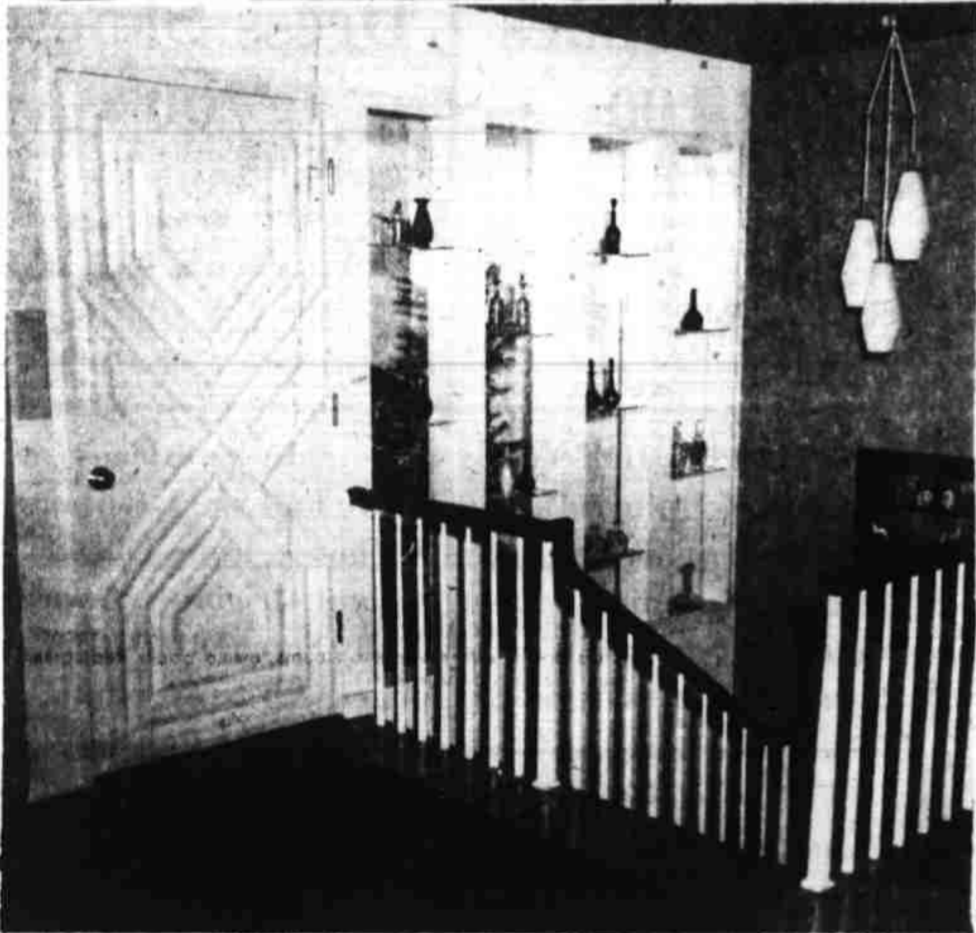


New Homes Feature Varied Types of Architecture . . .

Statesman's HOME
Panorama
 Women . . . Music . . . Fashions . . . Features
 (Sec. III) Statesman, Salem, Ore., Sun., Feb. 17, 1957



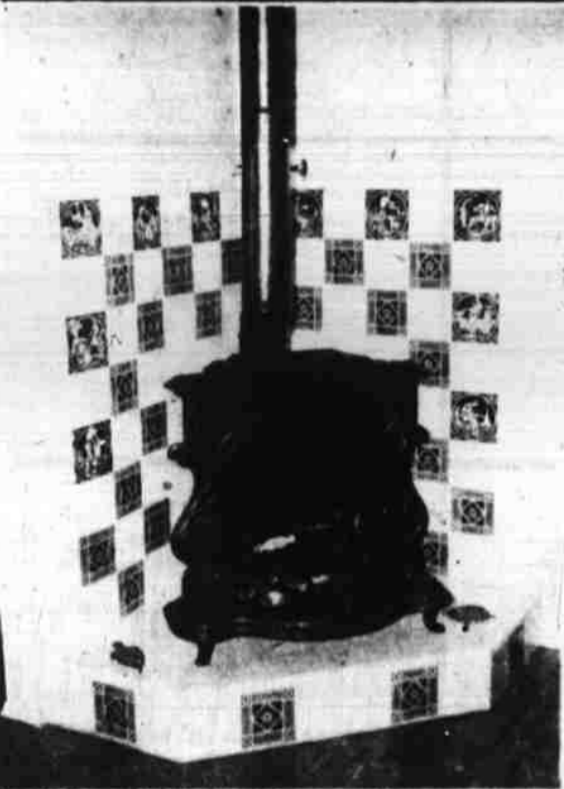
The spacious and lovely Candalaria Heights home of Mr. and Mrs. Breyman Boise was designed for their beautiful family treasures. In the upper picture Mrs. Boise is standing by the antique marble fireplace in the spacious living room, which has a commanding view of the Willamette Valley. Gold carpeting and handsome hand blocked wallpaper in shades of soft blue, and grey highlight the unusual decor in this room.

At the left is a view of the lovely entrance hall, with stairway leading down to the family room and summer living quarters. Japanese wallpaper in a coral shade is used on the far wall and in the window shelves are exquisite antique glass in many colors. In the lower left picture is a Franklin stove on a tile hearth in one corner of the dining room. The antique Minten pottery brick tiles in back are from the home of Mr. Boise's mother, Mrs. R. P. Boise, before it was moved to its present location on North Summer Street.



The Fairmount Hill home of Mr. and Mrs. H. C. Saalfeld, above, features Early American decor throughout with semi-colonial architecture for the exterior with brick trim. In the upper picture is a portion of the living room with view looking South and West. Shades of green with a red accent is the color scheme for this spacious room with colonial fireplace. In the lower picture Mrs. Saalfeld is pictured on the hearth of the fireplace in the keeping room. Birch is used in this room and the kitchen, with the Saalfelds doing all the finishing themselves. The family, which includes two boys, eat by the window overlooking the Willamette river and coast range. Early American wallpapers in many attractive colors and design are used throughout the home.

(All photos by Kennell-Ellis Studio).



Nestled among the trees on the North end of Candalaria Heights on Birds Hill is the Harold D. Robertsons' attractive Swiss chalet style home. A west view of the home with balcony is shown above right. Mrs. Robertson is pictured at the right in the entrance hall. The double doors are enhanced with beautiful hand carved gold Italian ornamentation. From the hallway one enters the sunken living room, kitchen and bedrooms.

The living room, (the far right picture) has a lovely view window with sliding panes, which opens onto the balcony overlooking the West. The beam ceiling is of natural alder and the far right wall is entirely of brick with fireplace. The carpeting is mustard gold and the attractive color scheme features turquoise, gold, brown and pink-red chairs. The diamond shaped silk screen slides and keeps the sun out of the picture window. Unusual block print draperies are used at the side windows. The Robertsons' youngest son, Scott, is pictured in front of the fireplace.

