

Garden Calendar

Nov. 12-14—Oregon Weed Control Conference, Bend.
 Nov. 12-13—Holiday Magic Show, Olympic Hotel, Seattle.
 Nov. 20—Sheridan Garden Club meeting, Mrs. W. H. Brandt, hostess, Program, Mrs. Brandt to speak on "Jams and Jellies from Wild Fruit."
 Nov. 24-25—Christmas Show, Clackamas County, Camby High School auditorium, Admission \$5.
 Nov. 24-25—Holiday Show, Toledo City Hall, Toledo, 1 to 5 p.m.; Sunday 10 a.m. to 5 p.m.
 Nov. 29-30—National Vegetable Growers Convention, Grand Rapids, Mich.
 Dec. 1-2—Rogue River District Christmas Show, North Bend Community Bldg., Hours: Friday, 2 to 9 p.m.; Saturday, 10 a.m. to 9 p.m.; Sunday, noon to 4 p.m.
 Dec. 1-4—Merry Christmas Around the World, Portland Christmas Show, Rose Bowl, Multnomah Hotel.
 Dec. 2—Salem Garden Club, Topic: Christmas Customs and Legends by members and guests.
 Dec. 2-4—Christmas Show, Windy Hill Hotel, Tacoma, Wash.
 Dec. 13-14—Salem Garden Club Christmas Green Show, Isaac Walton building.

JAP DUE FOR HONOR
 TOKYO, Nov. 10 (AP)—Kenji Mizoguchi, a leading Japanese movie director who died last August, will receive a special tribute at the Venice motion picture festival next summer. Two of his pictures won top awards at Venice in 1952 and 1953.

You'll want to kick your old "space heater" right out the door!

when you see the new **Universal** Constant Comfort Gas Heater for Natural Gas

Guarantee constant floor-to-ceiling comfort just like central heating... only **194.95**

\$2.99 Trade-In for Your Old Oil Burner (Limit 2 Burners Per Customer)

D. E. COOPER & Son
 549 Hood St. Phone 3-3603

NEW 1957 HOME LAUNDRY

FILTER-FLO AUTOMATIC WASHER

High Speed Dryer with Automatic Control

Perfect drying every time! Automatic Control adjusts time and temperature to individual load automatically. New High-Speed drying of socks, low temperatures.

2 WASH SPEEDS! 2 SPIN SPEEDS!

WASHER AVAILABLE WITH NEW AUTOMATIC SUDS RETURN SYSTEM!

SEE US TODAY! 1956 G. E. Dryers Start at **\$133.00**

24¢ Green Stamps — Open Mon. & Fri. 'Til 9 P. M.

MASTER SERVICE STATIONS, INC.
 365 N. COMMERCIAL

NEW LOW PRICES!!

SUNNY CRYSTAL HEAT

ATTENTION GREENHOUSE OWNERS...

General Electric Soil Heating Cable in 60 Ft. Lengths at our low, low price of only **\$6.95**

This is the best grade of lead covered cable available today and at a price lower than most plastic covered cable sets.

VIBBERT ELECTRIC
 551 Court St. Phone 39031

Beauty of Paneled Walls Depends Upon Finishings

The real secret in getting the most in beauty and attractiveness out of your wood paneled walls is in the finish, advise wood finishing experts.

Attention to detail at time of finishing coupled with proper materials, can make even a dull looking wall a masterpiece. The trouble is too many people don't like to put in the extra elbow grease to get a really first class job so they sometimes settle for a cheap job that will always look cheap.

Softwoods Finish Easily

The softwoods available today at most retail lumber yards in the country take every conceivable kind of finish. The final appearance of walls, builtins and other installations of Douglas fir, west coast hemlock or western red cedar are limited only by the tastes and desires of the homeowner.

Leather Lines Many Dresser Drawers Now

The inside of dresser drawers should be as dressy as the outside, according to Paul McCobb.

McCobb, one of the leading designers of modern furniture, is lining drawers with leather—usually to match the exterior paneling on his case goods.

The leather inside and out comes on the most stylish—and expensive—pieces. Usually the colors match—green, yellow or rust in the drawer linings and on the outside panels. Some people have ordered pale blue leather for the chests, he reported.

McCobb said he uses leather on his storage pieces because "it is warm, interesting and practical." He added:

"Interiors for the storage of nice things should be lined with a good-looking material like leather."

Other case goods designers at the market also dressed up drawer interiors by painting them dead white.

Women who want to make drawers more decorative on the inside can use inexpensive sticker paper and achieve a pretty and practical effect.

Oregon Roadside Council to Meet

The annual meeting of the Oregon Roadside Council will be held at the Portland Garden Club, 1133 SW Vista Avenue, at noon Tuesday. A buffet luncheon has been arranged for, and a number of Salem area members plan to attend.

John R. Vanderzicht, director of the Washington State Parks and Recreation commission will be guest speaker.

Election of officers will follow brief committee reports.

These popular softwoods can be finished to retain their natural grains, texture and colorings by varnish, rez, lacquer or wax finishes. They can be stained, painted, enameled, or antiqued. There are dozens of variations to each one of these individual finishes. For instance, where it is desired to retain the texture and grain of the wood but to change the tone in some manner to fit with color schemes or other decor, an almost endless variety of stain, paint and rez may be put on, then wiped off immediately, leaving tints or color shadings.

Here are just a few of the many ways fir, cedar and hemlock walls may be finished by the above method: Walnut stain, lead blue paint with chrome-green pigments, walnut with chrome yellow, sage rez, chrome green with burnt umber. The combinations, inflections, shadings are endless.

Question: Can you give us information about construction of a little greenhouse? Or tell us where we can get such information? G.F.

Answer:—Oregon State College has bulletins about this. We believe your county agent there in Dallas might have some of the bulletins.

Question:—Christmas Rose is being choked out by Calla Lily. Could I move it now? Or would I lose it? It never blooms until February because it is shaded too much. Don't tell me to dig the calla lily as it's roots go down to China. Are there two Christmas roses, one a rose red and one a greenish white or cream? E.K.

Answer:—As we started reading this question, we had our answer all framed for moving the calla lily part! However, this is a good time to move and divide calla lilies, if they need it. It is a little late to replant the Christmas Rose now—September would have been all right. You probably wouldn't lose the plant, but you would likely lose this year's bloom. If you don't want to move the calla lily, better wait until the Christmas Rose has bloomed this year and then carefully remove it from the calla lily territory.

These plants like at least partial shade, and a cool, moist soil. The ideal soil is a retentive loam, freely mixed with leaf mold and well-rotted manure. As they are impatient of disturbance at the roots, choose a place where they will not be required to be disturbed very often.

There are two distinct types of Helleborus: The Christmas rose, flowering as yours does, in late winter (sometimes these, in the right location will actually flower at Christmas), and the Lenten Rose, the greenish white which flowers in early spring.

Tile Helps Make Kitchen Gay, Colorful

You can keep up with the trend toward color in the kitchen by installing small tiles instead of large appliances.

You may not want to invest in a yellow refrigerator or a turquoise stove, but for \$30 you can buy ceramic tile and design your own kitchen color scheme.

For as little as \$30 the appearance of a kitchen can be enhanced with a panel above a sink and drain or for about \$300 a whole kitchenette can be built with the most colorful and best tile in any one of scores of colors, combinations and designs. Aside from the initial low cost, it lasts forever.

As proof of the durability of tile excavations in Egypt, notably in the Steppe Pyramids, where tile used in 3,000 B. C. is as good today as when it was installed.

Tile is still primarily used in the bathroom and kitchen these days, but it also can be found in a number of rooms in the most modern homes—as mantels, panels, walling for patios, halls, playrooms and basements.

Answers To Garden Questions

Editor's Note: We like to receive questions and any little bits of information about your home garden that you would like to tell us about. But please don't expect answers to your questions the following Sunday after they are mailed. This week we got two such letters asking for "immediate answers in next Sunday's". If they need immediate attention we try to move them forward. But we do get a number of questions and sometimes have quite a stack ahead. Please be patient.

Question:—Oregon State College has bulletins about this. We believe your county agent there in Dallas might have some of the bulletins.

Question:—Christmas Rose is being choked out by Calla Lily. Could I move it now? Or would I lose it? It never blooms until February because it is shaded too much. Don't tell me to dig the calla lily as it's roots go down to China. Are there two Christmas roses, one a rose red and one a greenish white or cream? E.K.

Answer:—As we started reading this question, we had our answer all framed for moving the calla lily part! However, this is a good time to move and divide calla lilies, if they need it. It is a little late to replant the Christmas Rose now—September would have been all right. You probably wouldn't lose the plant, but you would likely lose this year's bloom. If you don't want to move the calla lily, better wait until the Christmas Rose has bloomed this year and then carefully remove it from the calla lily territory.

These plants like at least partial shade, and a cool, moist soil. The ideal soil is a retentive loam, freely mixed with leaf mold and well-rotted manure. As they are impatient of disturbance at the roots, choose a place where they will not be required to be disturbed very often.

There are two distinct types of Helleborus: The Christmas rose, flowering as yours does, in late winter (sometimes these, in the right location will actually flower at Christmas), and the Lenten Rose, the greenish white which flowers in early spring.

Water Spots Stain Floor

A common floor problem facing housewives today is water spotting—but there are ways of minimizing it.

The first and most important rule is to wipe up spilled water immediately, using a slightly damp cloth or sponge.

Water will spot any type of floor finish—varnish, sealer, shellac or wax. On some finishes the water merely evaporates, leaving a whitish deposit of minerals. On other finishes, water actually changes the color, texture or gloss.

Floors finished with a polishing type wax are not nearly so susceptible to spotting as those treated with self-polishing wax and can be restored simply by wiping or buffing. If the water contains some foreign material such as food or soap, however, recasting and polishing may be necessary.

Self-polishing waxes become more water-resistant with age, some taking 48 hours to attain maximum resistance. If wiping does not restore gloss, a little of the self-polishing wax spread thinly on the affected area may help.

Water is particularly bad for wood, causing stains and roughness of grain. It also can affect certain pigments in linoleum, vinyl, asphalt and rubber tile, causing a change in color.

Home and Garden... Asparagus Popular as Garden Crop

By LILLIE L. MADSEN
 Farm Editor, The Statesman

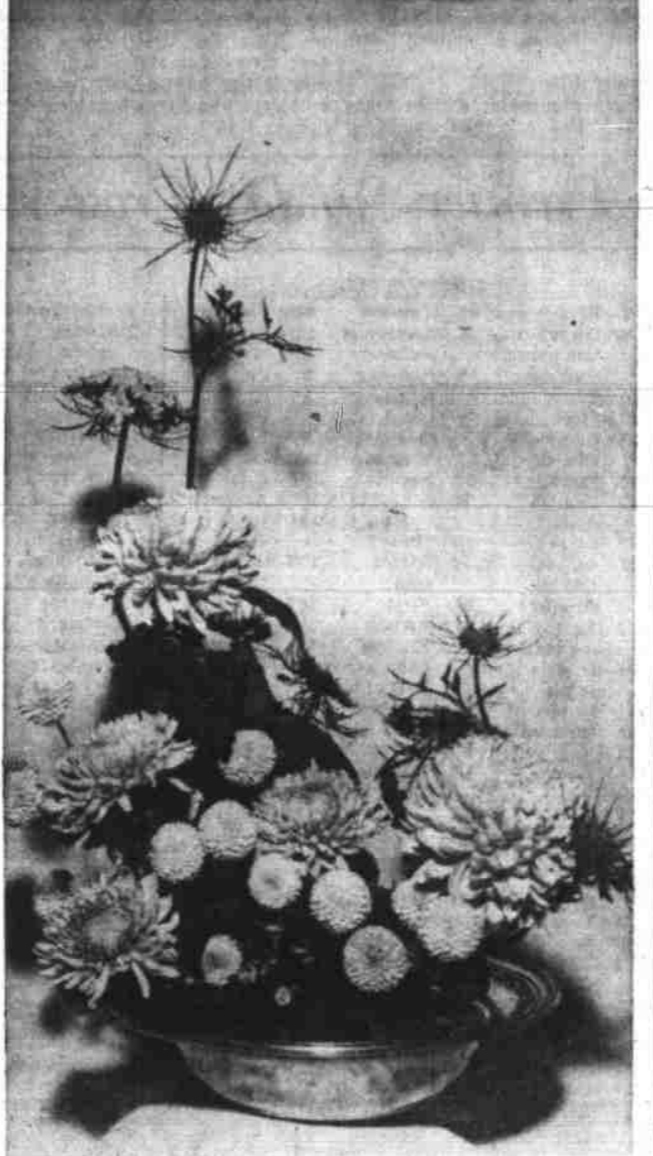
State College for specific information on this perennial vegetable. Because of the numerous requests, the information will run in rather full form—and in two installments.

Asparagus is our most important perennial vegetable crop in the Willamette Valley. In recent years its popularity as a commercial farm item has increased, but it is also grown largely, yet, in the home garden. Oregon's commercial production is around 400 acres.

which you wish to renovate, put a lot of well decayed compost post. In early spring, give the plants a little nitrogen to get them off to a good start.

5-10-10 fertilizer over the plants a little nitrogen to get them off to a good start. (Continued next week)

Mums Arrange Easily



This is chrysanthemum season, and the 'mums are one flower which lends itself to excellent arrangements. Also there are colors for every background. Here are two of the popular arrangements at last week-end's show in Salem Heights. Neither is a difficult arrangement and both are useful. Had the candles in the dark arrangement been placed to the left, they would have been more effective, the judges believed.

Garden Gabbing

By GARDEN GABBER

IT'S SAFE NOW—To mention the dreadful words "Republican" or "Democrat" without being accused of lobbying. We knew this little story before but thought best not to bring it up in case we would be accused of politicizing.

But we've often thought that more of us should do what Mrs. Bob Mautz did for Ike and Mamie Eisenhower. Mrs. Bob is the wife of the Republican national committeeman for Oregon, as most everyone knows by now. She used true Oregon articles for prettying up the rooms the big folks were to occupy.

Mrs. Mautz was in charge of decorations for the presidential suite at the Multnomah Hotel in Portland for the President's visit... She didn't get great big chrysanthemums—or even roses (which would have been excellent, but Mamie had been her hero). She did something different. In the suite Mrs. Mautz featured Oregon fruits and holly. And Mamie was really impressed. She wrote in part:

"You can't imagine how pleasantly surprised my husband and I were to be greeted by such exquisite fruit and flower arrangement, and we went from one to the other explaining about your artistry." (The letter was addressed to Mrs. Mautz.)

Nice going, Bob and Mrs. Bob—in more ways than one!

WE'VE GOT 'EM, TOO—We got a complaint by mail—today from a lady who lives up State Street. She talked about how she missed the colorful trees from her own beloved midwest... how tired she was of our "dead green, Green, GREEN—the only color you have here!"

We feel very badly that the dear lady is so blind. All she had to do was go out on her front porch or lawn and look right down State Street, toward the west. The birch along Willamette University campus are still lovely (they may not be by today—Sunday, as the leaves were coming down fast). We have never seen the trees more lovely and colorful than this year... or coming east on Court Street from downtown...

There are many lovely trees in the State House grounds that have been so colorful this year—although we think if green trees are pretty, too. The two Japanese maples (Ac. Palmaram) on the east side of the Capitol are worth walking several blocks to see. And the small-leaved Field Maple (A. Campestra) have furnished a clear yellow on the Cap grounds.

A HOBBY THAT PAYS—We visited a bit one day this with Mr. and Mrs. Clarence Halvorson in their chrysanthemum dens east of Silverton on the Marquam Road.

We had understood that they had lost their 'mums in last frost... but their chrysanthemum house was as full and as frosty as ever, and the dwarf varieties growing right outside were beautiful. It had taken some time for the Halvorsons to place and acquire sufficiently for such a showing but they gathered from far and near.

"You see it's a hobby—although mostly it pays for itself somehow one doesn't seem to mind spending extra time and on a hobby," Mrs. Halvorson explained.

We talked with her right after she was back from the Pe show where she had done "very nicely," thank you, in the prizes. She had also judged at the Vancouver show... She knew, being invited to judge at the national show in Pevania, too, but turned this down as she had promised the folks first. For 19 years now, Mrs. Halvorson has grown 'mum hobby... "and if I'm not careful, it's going to get into a busi she laughed this week. Some of her plants have come from land—some from Canada—others from the east in our own cut."

She had "hated to miss the Salem show," too, this year, told us she had heard that it was "excellent."

And she had heard correctly. We were there, and thought was one of the best of its kind that we had seen. We were surprised to see the variety of chrysanthemums which had come through the winter someplace... and the very many excellent arrangements.

DEEP SOIL GOOD

A deep fertile loam soil with good air and water drainage is desirable. Sandy soils produce earlier crops because they warm up faster in the spring. A slightly acid reaction with a pH of 6.0 to 6.5 is preferred, if you want to be technical.

Mary Washington, a rust-resistant variety of asparagus, is still a leader in the Willamette Valley. Another good variety being grown, is California 500.

Qualities most desired in asparagus stock are rust resistance, good color and length of stalk, long holding without woodiness, and adaptability to freezing as well as being used in the fresh state.

While asparagus is grown from seed, most gardeners plant 1-year-old crowns, grown from selected seed by specialists in root and plant production. The use of strong year-old crowns, gives a year's advantage and a much better planting. Even then one should not harvest any crop the first year, but allow all strength to be stored in the crown. This should bring about a good production of strong shoots the second year. When they become spindly or crooked, in the second and succeeding years, cutting should stop and the planting should be given good care to build up the crowns.

Prepare Bed Well

Since asparagus is normally planted and left in one place for a number of years, it is quite important that the soil be well prepared. Perennial weeds and grasses should be eliminated before planting. The organic matter content of the soil should be built up for a year or two prior to field planting. Faster work is done in the home garden. Stable manures or green manure crops are helpful. Fall plowing or spading is desirable to incorporate this material in the soil well ahead of planting time.

In larger plantings, commercial fertilizers of around a 5-10-10 formula are used for this crop. One to two thousand pounds per acre are used, depending on fertility of the soil. After the planting is producing, a complete fertilizer is applied after harvest, and some nitrogen in the early spring if needed or better growth.

If you have an old planting

Victorian Chairs Turn to Pastels

Victorian furniture is going pastel for late 1956.

Pink, blue and green finishes on normally mahogany Victorian chairs appeared at the International Home Furnishings Market in Chicago recently.

The pastels were used in tone-on-tone effects: The pink-painted chairs had velvet upholstery in darker rose, the pale blue chairs were covered in deep blue velvet, and the light green chairs had deeper green covers.

Garden Gabbing

By GARDEN GABBER

IT'S SAFE NOW—To mention the dreadful words "Republican" or "Democrat" without being accused of lobbying. We knew this little story before but thought best not to bring it up in case we would be accused of politicizing.

But we've often thought that more of us should do what Mrs. Bob Mautz did for Ike and Mamie Eisenhower. Mrs. Bob is the wife of the Republican national committeeman for Oregon, as most everyone knows by now. She used true Oregon articles for prettying up the rooms the big folks were to occupy.

Mrs. Mautz was in charge of decorations for the presidential suite at the Multnomah Hotel in Portland for the President's visit... She didn't get great big chrysanthemums—or even roses (which would have been excellent, but Mamie had been her hero). She did something different. In the suite Mrs. Mautz featured Oregon fruits and holly. And Mamie was really impressed. She wrote in part:

"You can't imagine how pleasantly surprised my husband and I were to be greeted by such exquisite fruit and flower arrangement, and we went from one to the other explaining about your artistry." (The letter was addressed to Mrs. Mautz.)

Nice going, Bob and Mrs. Bob—in more ways than one!

WE'VE GOT 'EM, TOO—We got a complaint by mail—today from a lady who lives up State Street. She talked about how she missed the colorful trees from her own beloved midwest... how tired she was of our "dead green, Green, GREEN—the only color you have here!"

We feel very badly that the dear lady is so blind. All she had to do was go out on her front porch or lawn and look right down State Street, toward the west. The birch along Willamette University campus are still lovely (they may not be by today—Sunday, as the leaves were coming down fast). We have never seen the trees more lovely and colorful than this year... or coming east on Court Street from downtown...

There are many lovely trees in the State House grounds that have been so colorful this year—although we think if green trees are pretty, too. The two Japanese maples (Ac. Palmaram) on the east side of the Capitol are worth walking several blocks to see. And the small-leaved Field Maple (A. Campestra) have furnished a clear yellow on the Cap grounds.

A HOBBY THAT PAYS—We visited a bit one day this with Mr. and Mrs. Clarence Halvorson in their chrysanthemum dens east of Silverton on the Marquam Road.

We had understood that they had lost their 'mums in last frost... but their chrysanthemum house was as full and as frosty as ever, and the dwarf varieties growing right outside were beautiful. It had taken some time for the Halvorsons to place and acquire sufficiently for such a showing but they gathered from far and near.

"You see it's a hobby—although mostly it pays for itself somehow one doesn't seem to mind spending extra time and on a hobby," Mrs. Halvorson explained.

We talked with her right after she was back from the Pe show where she had done "very nicely," thank you, in the prizes. She had also judged at the Vancouver show... She knew, being invited to judge at the national show in Pevania, too, but turned this down as she had promised the folks first. For 19 years now, Mrs. Halvorson has grown 'mum hobby... "and if I'm not careful, it's going to get into a busi she laughed this week. Some of her plants have come from land—some from Canada—others from the east in our own cut."

She had "hated to miss the Salem show," too, this year, told us she had heard that it was "excellent."

And she had heard correctly. We were there, and thought was one of the best of its kind that we had seen. We were surprised to see the variety of chrysanthemums which had come through the winter someplace... and the very many excellent arrangements.

DEEP SOIL GOOD

A deep fertile loam soil with good air and water drainage is desirable. Sandy soils produce earlier crops because they warm up faster in the spring. A slightly acid reaction with a pH of 6.0 to 6.5 is preferred, if you want to be technical.

Mary Washington, a rust-resistant variety of asparagus, is still a leader in the Willamette Valley. Another good variety being grown, is California 500.

Qualities most desired in asparagus stock are rust resistance, good color and length of stalk, long holding without woodiness, and adaptability to freezing as well as being used in the fresh state.

While asparagus is grown from seed, most gardeners plant 1-year-old crowns, grown from selected seed by specialists in root and plant production. The use of strong year-old crowns, gives a year's advantage and a much better planting. Even then one should not harvest any crop the first year, but allow all strength to be stored in the crown. This should bring about a good production of strong shoots the second year. When they become spindly or crooked, in the second and succeeding years, cutting should stop and the planting should be given good care to build up the crowns.

Prepare Bed Well

Since asparagus is normally planted and left in one place for a number of years, it is quite important that the soil be well prepared. Perennial weeds and grasses should be eliminated before planting. The organic matter content of the soil should be built up for a year or two prior to field planting. Faster work is done in the home garden. Stable manures or green manure crops are helpful. Fall plowing or spading is desirable to incorporate this material in the soil well ahead of planting time.

In larger plantings, commercial fertilizers of around a 5-10-10 formula are used for this crop. One to two thousand pounds per acre are used, depending on fertility of the soil. After the planting is producing, a complete fertilizer is applied after harvest, and some nitrogen in the early spring if needed or better growth.

If you have an old planting

Victorian Chairs Turn to Pastels

Victorian furniture is going pastel for late 1956.

Pink, blue and green finishes on normally mahogany Victorian chairs appeared at the International Home Furnishings Market in Chicago recently.

The pastels were used in tone-on-tone effects: The pink-painted chairs had velvet upholstery in darker rose, the pale blue chairs were covered in deep blue velvet, and the light green chairs had deeper green covers.

Pottery Painting Notes Revival

An art the Indians and Mexicans developed to perfection—hand-painting of pottery—is being revived in the Southwest for decoration of inexpensive china.

Artists are finding that china dishes from Europe or Japan can be turned into lovely home decorations with little more skill than a steady hand and adequate color perception. Patterns can be followed by the less adept.

The painted designs are "fired" in a kiln to make them permanent. China painting is an offshoot of a general revival in "do-it-yourself" ceramics. Ashtrays, shelf decorations, vases and eating dishes become "originals" in homes where the housewife doubles as a craftsman.

Hand-painted pottery or china also make welcome gifts. A white Japanese china cup selling for a nickel or a dime can become the cherished personal dish of a child when painted with puppy or kitty figures and inscribed with the child's own name.

Japan's birth rate has dropped faster than that of any other nation in recent times, according to United Nations' reports.

Answers to Crossword Puzzle

ACROSS: 1. BARD, 2. DALLE, 3. ACRID, 4. RAMP, 5. ALEE, 6. ALIEN, 7. SHIRE, 8. OBOE, 9. LOAM, 10. MANGE, 11. PAGAN, 12. MERE, 13. DEDICATE, 14. REI, 15. ADULATOR, 16. LOGE, 17. AGORA, 18. EDEN, 19. ALLUDE, 20. PRESENT, 21. ESTATE, 22. SEINE, 23. GAIT, 24. DAUB, 25. STRIS, 26. SANE, 27. GALLIC, 28. CRAB, 29. CENT, 30. EVE, 31. DATE, 32. CORONION, 33. AGE, 34. TENDEREST, 35. AIN, 36. TROLLER, 37. EBB, 38. TORSADE, 39. ATA, 40. REPEALS, 41. TUT, 42. AUSTERITY, 43. ERR, 44. REMITTER, 45. REED, 46. NEE, 47. GOER, 48. RUSE, 49. RECORD, 50. PINA, 41. ADEEM, 42. GERM, 43. MOPE, 44. GLASS, 45. LENDER, 46. REALIZE, 47. CHALET, 48. ALAS, 49. DRONY, 50. WAIT, 51. ENACTING, 52. SOD, 53. CORTICAL, 54. TINT, 55. SARAH, 56. TINUE, 57. NAME, 58. ALTO, 59. ERICA, 60. NORSE, 61. UVEIA, 62. HEAR, 63. REPEL, 64. GREEN, 65. MIENO

Custom-Made

New Beauty

for Your Windows

- Draperies, Shades, Venetian Blinds
- Combination Screen & Storm Doors
- Kirsch Drapery Rods and Hardware
- Manufacturers of Salem Venetian Blinds
- Cut to Measure Window Shades

Capital Shade and Drapery Shop
 1695 Fairgrounds Rd. Phone 4-1854