

# MONDAY BROADCASTS

(Editor's note: The Statesman publishes in good faith the programs and times as provided by radio and TV stations, but because oftentimes the programs are changed without notification this newspaper cannot be responsible for the accuracy herein.)

## MONDAY'S TELEVISION HIGHLIGHTS

**KPTV MONDAY'S HIGHLIGHTS (CHANNEL 7):**  
 11:00 a.m.—NBC Matinee Theatre—"The Lovers," starring Mary Astor.  
 3:00 p.m.—The Medic—"The Glorious Red Gallagher," story of the last case of Clara Mary Gallagher, before her retirement as a registered nurse.  
 8:30 p.m.—Robert Montgomery Presents—with James Cagney in "Soldier From The Wars Returning."

**KOIN-TV MONDAY'S HIGHLIGHTS (CHANNEL 6):**  
 1:00 p.m.—Armchair Theatre—with Raymond Burr in "The Magnificent Lie."  
 2:30 p.m.—Peter Lind Hayes and his wife, Mary Healy, are substituting for Arthur Godfrey in a series of skits involving commuter's early morning problems.  
 8:30 p.m.—Studio One—"A Day Before Battle," with Gerald Saracini and Jack Lord.  
 10:30 p.m.—Showtime On Six—"Earl Carroll Sketchbook," song writer composes radio jingles.

**KLOR-TV MONDAY'S HIGHLIGHTS (CHANNEL 12):**  
 11:00 a.m.—Afternoon Film Festival—"Take My Life," starring Greta Gyn, Hugh Williams, Marius Goring and Francis L. Sullivan.  
 7:30 p.m.—Voice of Firestone—A special program featuring highlights from Bizet's immortal opera "Carmen." Mildred Miller is guest artist.  
 9:45 p.m.—Premier Theatre—"Immediate Disaster"—starring Patricia Neal, Helmut Dantine and Derek Bond.  
 10:30 p.m.—Homestead Theatre—"Sergeant and the Spy," starring Janis Carter and Richard Ney.

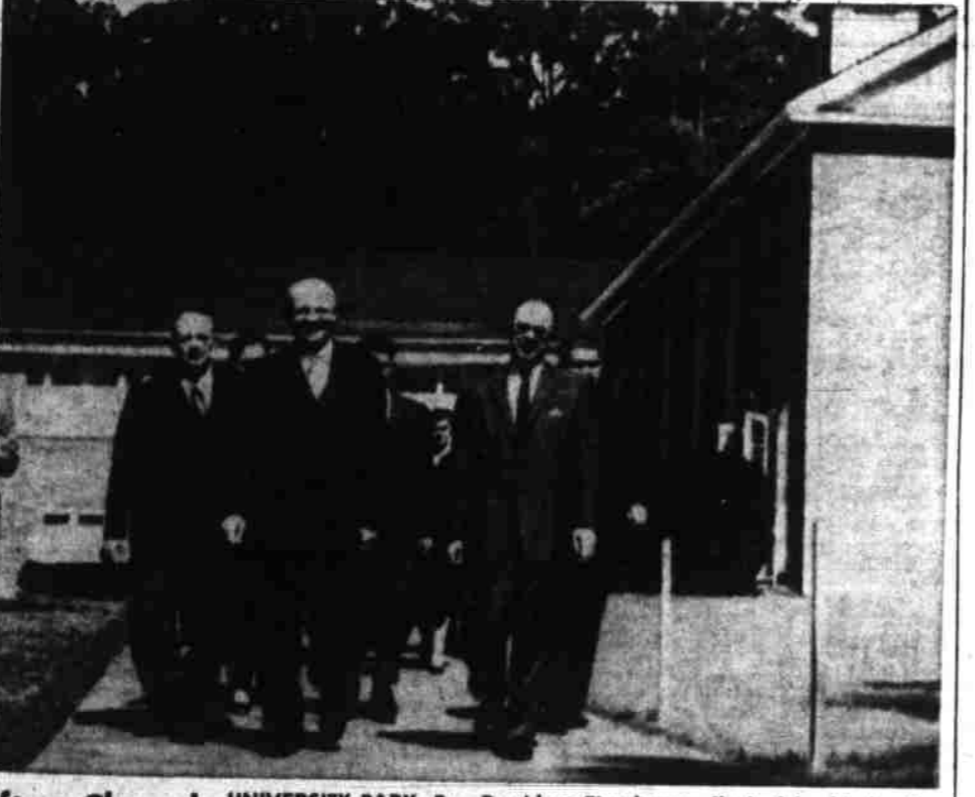
## MONDAY'S TELEVISION

Hour	00:00	00:15	00:30	00:45
7	KPTV Home	Home	Home	Home
8	KOIN Panorama Pac.	Panorama Pac.	Panorama Pac.	Panorama Pac.
9	KPTV To The Dough	To The Dough	To The Dough	To The Dough
10	KPTV Ding Dong Sch.	Ding Dong Sch.	Ding Dong Sch.	Ding Dong Sch.
11	KPTV Today in West	Today in West	Today in West	Today in West
12	KPTV Today in West	Today in West	Today in West	Today in West
13	KPTV Today in West	Today in West	Today in West	Today in West
14	KPTV Today in West	Today in West	Today in West	Today in West
15	KPTV Today in West	Today in West	Today in West	Today in West
16	KPTV Today in West	Today in West	Today in West	Today in West
17	KPTV Today in West	Today in West	Today in West	Today in West
18	KPTV Today in West	Today in West	Today in West	Today in West
19	KPTV Today in West	Today in West	Today in West	Today in West
20	KPTV Today in West	Today in West	Today in West	Today in West
21	KPTV Today in West	Today in West	Today in West	Today in West
22	KPTV Today in West	Today in West	Today in West	Today in West
23	KPTV Today in West	Today in West	Today in West	Today in West
24	KPTV Today in West	Today in West	Today in West	Today in West
25	KPTV Today in West	Today in West	Today in West	Today in West
26	KPTV Today in West	Today in West	Today in West	Today in West
27	KPTV Today in West	Today in West	Today in West	Today in West
28	KPTV Today in West	Today in West	Today in West	Today in West
29	KPTV Today in West	Today in West	Today in West	Today in West
30	KPTV Today in West	Today in West	Today in West	Today in West
31	KPTV Today in West	Today in West	Today in West	Today in West

# Ship Left on Reef



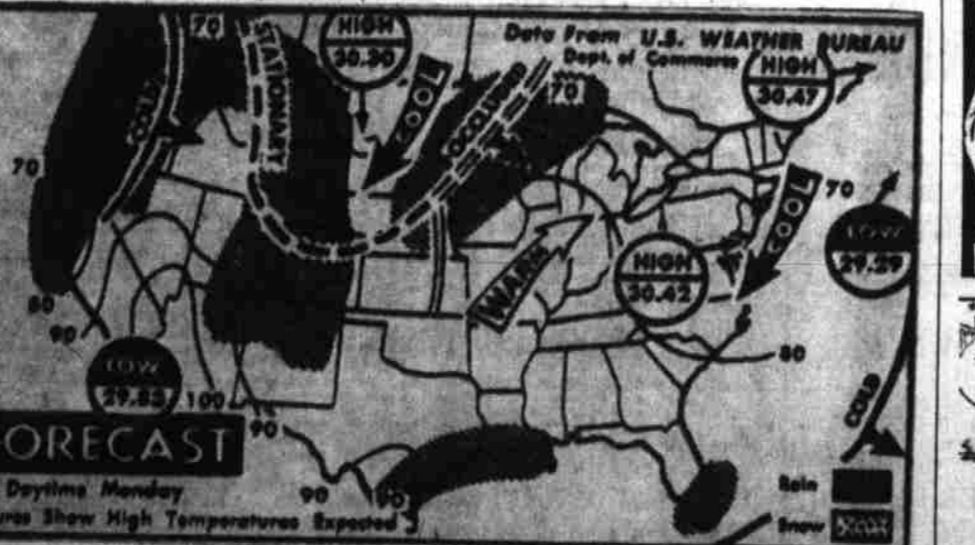
**Sad Skipper** GRAYS HARBOR, Wash.—Capt. Panos Caminos, left, looks sad and dejected as he leaves his wounded ship, Seagate, listing dangerously in background, for the last time after it hit Sonora reef. With the saddened skipper of the Liberian freighter are U. S. Customs Officer Dan Dawson of Seattle and Dr. Don Brumback of the U. S. Public Health Service, right. Efforts to salvage ill-fated ship were continuing Sunday. (AP Wirephoto).



**After Chapel** UNIVERSITY PARK, Pa.—President Eisenhower flanked by his brother, Dr. Milton Eisenhower, right, and Glen E. Eakin, Milton's brother-in-law, leave Helen Eakin Eisenhower-chapel after private services. Mrs. Eisenhower was Milton's wife who died two years ago. Chapel is named in her honor. (AP Wirephoto).



**On Outing** PALISADES PARK, N. J.—Adlai E. Stevenson, Democratic nominee for president, dods on ferris wheel here Sunday with Mike Dodd, 5, and Mike's sister, Maureen, 7, after addressing a rally of several thousand supporters. (AP Wirephoto).



**Rain Forecast** Unseasonably cool weather over East coast is expected to continue. Lakes, and cooler temperatures in northern Plains. Rain is forecast for Gulf, Missouri and Mississippi valleys, northern Great Lakes, Florida, Rockies and the northern part of West coast. (AP Wirephoto Map).

**BLONDIE** By CHIC YOUNG

**BARNEY GOOGL** By FRED LASSWELL

**MICKY MOUSE** By WALT DISNEY

**BUZZ SAWYER** By ROY CRANE

**GASOLINE ALLEY** By KING

**LITTLE ANNIE ROONEY** By DARRELL McCLURE

**RIP KIRBY** By ALEX RAYMOND

**DICK TRACY** By CHESTER GOULD

**MOMMY** By THE MOSSLERS

### MONDAY'S RADIO

Hour	00:00	00:15	00:30	00:45
6	KELM Val Farness	Val Farness	Val Farness	Val Farness
7	KELM Val Farness	Val Farness	Val Farness	Val Farness
8	KELM Val Farness	Val Farness	Val Farness	Val Farness
9	KELM Val Farness	Val Farness	Val Farness	Val Farness
10	KELM Val Farness	Val Farness	Val Farness	Val Farness
11	KELM Val Farness	Val Farness	Val Farness	Val Farness
12	KELM Val Farness	Val Farness	Val Farness	Val Farness
13	KELM Val Farness	Val Farness	Val Farness	Val Farness
14	KELM Val Farness	Val Farness	Val Farness	Val Farness
15	KELM Val Farness	Val Farness	Val Farness	Val Farness
16	KELM Val Farness	Val Farness	Val Farness	Val Farness
17	KELM Val Farness	Val Farness	Val Farness	Val Farness
18	KELM Val Farness	Val Farness	Val Farness	Val Farness
19	KELM Val Farness	Val Farness	Val Farness	Val Farness
20	KELM Val Farness	Val Farness	Val Farness	Val Farness
21	KELM Val Farness	Val Farness	Val Farness	Val Farness
22	KELM Val Farness	Val Farness	Val Farness	Val Farness
23	KELM Val Farness	Val Farness	Val Farness	Val Farness
24	KELM Val Farness	Val Farness	Val Farness	Val Farness
25	KELM Val Farness	Val Farness	Val Farness	Val Farness
26	KELM Val Farness	Val Farness	Val Farness	Val Farness
27	KELM Val Farness	Val Farness	Val Farness	Val Farness
28	KELM Val Farness	Val Farness	Val Farness	Val Farness
29	KELM Val Farness	Val Farness	Val Farness	Val Farness
30	KELM Val Farness	Val Farness	Val Farness	Val Farness
31	KELM Val Farness	Val Farness	Val Farness	Val Farness