

# For Better Living: Kitchen Good Place to Start Modernizing Program

## Glamor Added to Cooking

New ideas in kitchen equipment, including the oven in the wall, top burners built into counters and refrigerators hanging like cabinets, are bringing about a re-evaluation of building materials for kitchens.

With ovens and top burners separated, the part of the range commonly used as a resting place for hot pans and teakettles disappears. Plastic covered counter surfaces have been found to blister and buckle under such heat. The result is that counter tops of glazed ceramic tile are becoming more common.

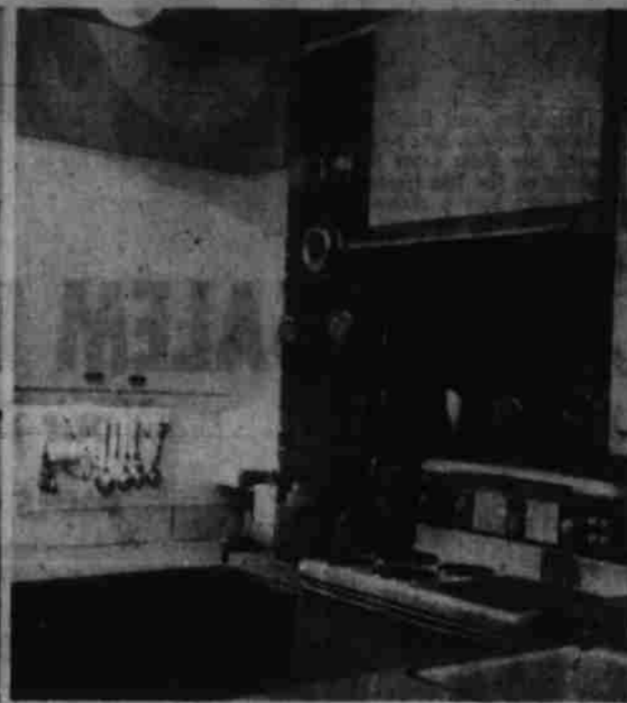
In its manufacture, tile is baked at temperatures of 2,000 degrees and higher, so it is impervious to sizzling roasting pans and hot casseroles removed from the oven.

New wall type refrigerators, finished in a variety of colors to match or blend with kitchen cabinet colors, tie in readily with ceramic tiles, which are now made in more than 200 shades.

Modern adhesives have simplified the installation of tile. It is no longer always necessary to provide a mortar bed for clay tile. The squares can be cemented firmly on plywood, plaster, gypsum wallboard and other smooth surfaces.



**MODERN CONVENIENCE** in an old, roomy but well-worn house was the goal for Mr. and Mrs. Don Dill, 200 S. 23rd St., Salem, when they began their home-improvement project recently. How well they succeeded is shown by these before and after pictures. By replacing out-dated cabinet (top, left) with new ones, more efficient, well-lighted



working space was gained. Plaster was stripped from the chimney wall and the old bricks cleaned and waxed to make an attractive background for copper utensils. A fan concealed under copper hood over the stove whisk away cooking odors (top, right). (Don Dill Photo)

## Hanging Refrigerator Eliminates Stooping



**NO STOOPING** is necessary when you store food in a new wall-cabinet refrigerator. Everything is at eye level and capacity can be as big as you need—extra sections are added. Something to consider when remodeling a kitchen.

**PUT FENCE ON LINE** Don't guess about your boundary line in putting up a fence. Have a survey made and put the fence exactly on the line. If a fence is set in from your property line and no correction is made for 15 or 30 years, the land outside of the fence may be forfeited and may cause title trouble in any future sale.



You might be a musical genius!  
Here's how to find out.  
Try the **HAMMOND CHORD ORGAN** at

**SALEM HOME AND GARDEN SHOW**  
APRIL 26-27-28  
Visit the Booth of Music!

# Stone

PIANO COMPANY  
"THE VALLEY'S FINEST PIANO STORE"

1280 State St., Salem

## More Basements in Larger Homes

Buyers of new homes are showing an increasing preference for basements, according to a survey by the Bureau of Labor Statistics in Washington.

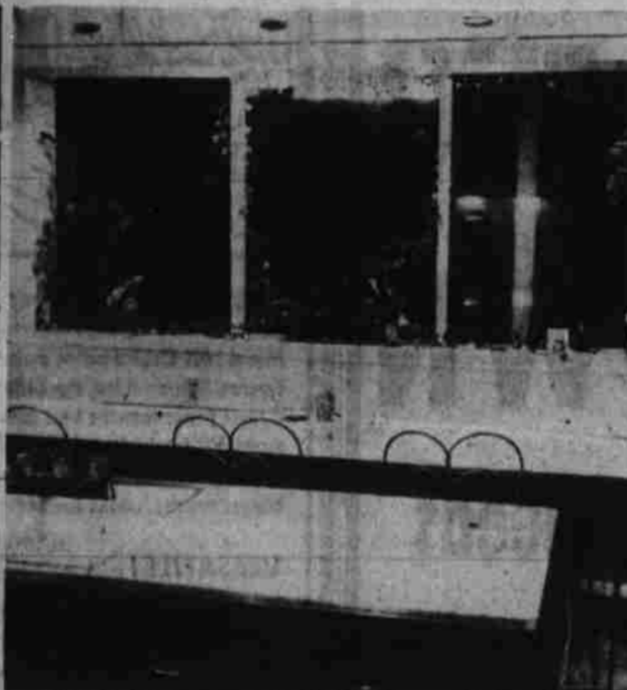
In 1954, the survey shows, half of all homes in the \$12,000 to \$15,000 price class were built with basements.

In the \$10,000 to \$20,000 range, the preference increased to 60 per cent.

In homes costing \$20,000 and more, 70 per cent had basements.



A **BREAKFAST BAR** was built under modern new windows which replace the old, high windows (lower, left) when the Don Dills modernized the kitchen in their old-style home. The sink was moved from the wall to an island in the center of the kitchen, closer to stove and counter work areas and handy for removal of dishes from



the practical plastic-topped table height bar (lower, right). The Dills had professional help with planning and re-building, but did their own painting. The cheerful color scheme includes pink, coral, yellow and charcoal grey for the lower cabinets. (Don Dill Photo)

## How to Estimate Hardwood Floor

To figure the number of feet of hardwood flooring needed for a room, the Maple Flooring Manufacturers Assn. recommends this procedure:

Find the number of square feet of floor space to be covered and add the following percentages depending on the face width of the flooring: For the popular standard face width of 2 1/4 inches, add 33 1/3 per cent; for 1 3/4-inch widths, add 50 per cent; for 2-inch widths, add 37 1/2 per cent.

An additional 3 to 5 per cent

should be tacked on to the total to allow for customary waste in cutting and fitting.

**DRESSER DRAWERS**  
Cold dry weather is the best time to fix dresser drawers that swell and stick in summer humidity. Sand and dust the edges. Then seal all exposed surfaces thoroughly with a thin coat of shellac. This will prevent the wood from swelling again. A little wax smooths movement.

GOOD HOUSEKEEPING INC. . . .  
*presents Ethan Allen...*

**LIVING**

*The furniture that adds living room to every room*

You've read about famous Ethan Allen by Beamer in Living for Young Home-makers—now come see it on display! This is warm, liveable Early American furniture that's just perfect for today's needs. With this Ethan Allen functional group you'll be able to make the most of limited wall space—and have all the storage space you need! *This furniture actually makes rooms seem larger—even turns a corner to take advantage of space!*

And Ethan Allen is open stock, of course—so that you can make a starter purchase now, and fill-in later. Constructed of selected rock maple and birch cabinet woods carefully blended to bring out the beauty of the wood grain, hand-finished to a rich brown nutmeg tone. You'll love the broad, correlated selection for bedroom, living room and dining room—*come see it!*

You are invited to visit "CHARM HOUSE" a Cape Cod cottage furnished with the warmth and friendliness of early American mople at its best. Where you may shop at your leisure with free decorating help, if desired. Our "Charm House" has just been completely redecorated.

**GOOD HOUSEKEEPING INC.**  
467 Court St. Open Fri. 'Til 9 P.M. Ph. 39611

# CAVALIER ELECTRIC HEATERS

WALL — BASE BOARD — PORTABLE

**OPERATION** *50 Years to P.A.* **HOME IMPROVEMENT**

**AUTO MATIC Cavalier ELECTRIC**

**LOWEST PRICES IN TOWN SEE FOR YOURSELF**

52 Gal. Elec. WATER HEATER \$65.00	Bedroom Fixtures \$1.50 ea.	12-2 Loom Wire 4 1/2¢ Ft. in coils
4-inch Fiber Pipe 30¢ ft.	21x32 KITCHEN SINK \$43.95 Complete	Toilet \$24.95
OUTLET BOXES 25¢	OUTLETS DUPLEX 16¢ Ivory	8-inch BIO-FAN Bath \$19.95 Kitchen
A SWELL BEDROOM HEATER 110 or 220 Volts	RADIANT WALL PANEL.. Only \$32.00	

**APEX ELECTRIC and PLUMBING**  
1410 Broadway Ph. 2-1866 Open Fri. 'Til 9 p.m.

**Compare MOTO-MOWER VALUE**  
New "Catalina" 18" Rotary Power Mower Costs Only **97.95**

as low as 9.80 Down 1.40 Weekly

**SAVE HOURS OF TRIMMING TIME** **POWERFUL 2 h. p. 4-cycle Briggs & Stratton engine.**

**ORDINARY MOWER**—either hand or power reel type—leaves wide strip of uncut grass between wheel and reel. You can spend as much time trimming as you did mowing.

**MOTO MOWER'S** wheels are in line with the reel counter-rotates at cutting blade. Results you cut and trim in one operation—time to trim, walk, build-up.

**SOLID SUPPORT** provided by full-width axle, large wheels, wide tires.

**FOR HEAVY CUTTING**, gross shield is removable.

**ADJUST CUTTING HEIGHT** from 1" to 3".

**POWER MOWER SPECIAL!**  
★ Full 18-Inch Cut NOW JUST **39.95**  
★ Cutting Height 3/4-Inch to 2-Inch  
★ Budget Terms 3.99 Down, 1.25 Weekly

**TRUAX TIRE STORE**  
Corner Center and Church Phone 3-9600 — 2-5651  
Open 'til 6 P.M. Daily Plenty of Free Parking  
WE GIVE NORTHERN STAMPS

**B.F. Goodrich** *B.F. Goodrich*  
**FIRST IN RUBBER — FIRST IN TUBELESS**