

### 5-Year Research Produces Deep-Red Color



If you are looking for a new, ever-blooming rose with lots of deep-red color, there's good news this month from the Gardening Council. Five years of research has produced a new hybrid, named Sara Coventry. Spokesmen of introducers say it is one of the finest hybrids produced in several years. A cross between the Red Poincchio and Garnet, the Sara Coventry first flowered in 1950 and has been tested out during the five successive years.

## 'Overfeeding' House Plants Listed as Common Mistake

By LILLIE L. MADSEN  
Garden Editor, The Statesman  
MERRY CHRISTMAS

ence . . . and it is for you that I'm writing this week.

HOUSE PLANTS — There will be a lot of new ones in homes today. Some of them will go with you through the year. Others will give you joy and add color for some months. Still others will just be at their best for a day—or perhaps, if you are lucky—a week.

## 'Room-Stretcher' Suggested



If your growing child is getting too large for his room, here's a room stretching idea. Tip the furniture up into the wall and give them more floor space. This is easy to do with softwoods like Douglas fir or west coast hemlock which work so easily, they can be cut and shaped to fit any space. In this unit you have comfortable bunk bed, study table, and storage for shoes, books, linens and hobby gear.

## New Charges Filed Against Historian

WASHINGTON (AP) — The State Department has filed new charges against Donald Dozer, a historian it sought to dismiss last Oct. 8.

## Liquor Bottle 'Can Be as Bad As Time Bomb'

LANSING, Mich. (AP) — The Michigan Board of Alcoholism reminded holiday shoppers this week that a bottle in the Christmas stocking of an alcoholic is almost as bad as a time bomb.

## Malay Peace Talks Possible

KUALA LUMPUR, Malaya (AP) — A Communist courier brought word through the jungle Friday night that rebel leaders have agreed to come out of hiding for peace talks with Malayan officials.

## Basements Due to Stage Big Comeback

Basements are staging a comeback that is remarkable in its scope. More than half of all new homes started in the latest months for which figures are available included basements, according to the U. S. Bureau of Labor Statistics.

## Carpenters' Union Appeals Jury Verdict

PROSSER, Wash. (AP) — The carpenter who was awarded \$11,000 Wednesday because he was kicked out of his union for picking up his paycheck on his own time isn't going to get the money without a battle.

## Short Newsprint Supply Cuts Ads in Denver Paper

DENVER (AP) — There will be no advertising in the Monday edition of the Rocky Mountain News.

## Burnt Offering

UHRICHSVILLE, Ohio (AP) — Firemen dashed to the home of Helen Arbogast and charged into the smoke-filled interior. The embarrassed Mrs. Arbogast admitted she had burned a steak.

# Home and Garden . . .

By Lillie L. Madsen

## Garden Calendar . . .

- Jan. 9—Salem Garden Club meeting.
- Jan. 14-15—Annual Camella Society show, Thomasville, Ga.
- Feb. 10-20 — Annual Home and Garden Pilgrimage to Mexico. Information may be had from Mrs. Ben G. Oneal, 2201 Miramar, Country Club Estates, Wichita Falls, Texas.
- March 2-31 — Famous Natches Pilgrimage. Headquarters is Pilgrimage Garden Club, Stanton Hall, Box 347, Natches, Miss.
- March 11-17—International Flower Show, Wanamaker store, under direction of Horticultural Society of New York. Headquarters, Essex House, Central Park South, New York City.

## Basements Due to Stage Big Comeback

Basements are staging a comeback that is remarkable in its scope. More than half of all new homes started in the latest months for which figures are available included basements, according to the U. S. Bureau of Labor Statistics.

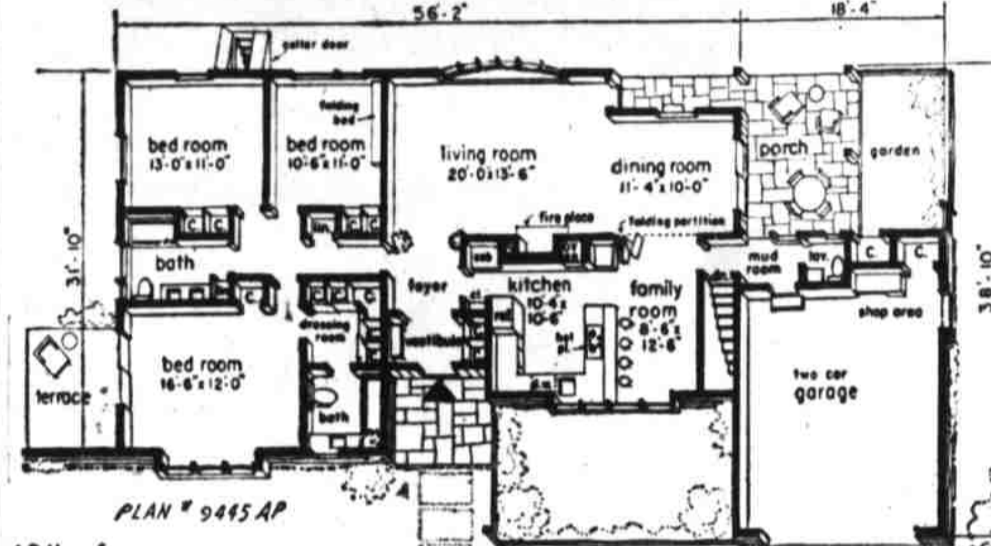
## Man, 109, Tells Of 'Problems' At Christmas

By RICHARD MCMURRAY  
ENNIS, Tex. (AP) — At 109 years old, a wrinkled Frank Fowler claims to be, one faces problems. The alert old fellow listed his big ones as two, and in this order:

## Answers to Garden Questions

Question—What is the Christmas rose? Is a particular kind of rose or something else that looks like a rose? D.R.  
Answer — This actually isn't a rose at all. It is, botanically, Helianthus niger, and one of the most delightful little plants we have in the winter garden. Surprising as it may seem the November frost failed to stop its blooming in many gardens. In a few others, the plant suffered a little, but nowhere, that I've yet heard of, did it suffer serious damage.

## HOMES FOR AMERICANS



AP Newsfeatures  
SPECIAL FEATURES can make a house more livable. Here a family room adjoins the kitchen with a folding partition separating it from dining room. A built-in oven wastes no space when vented through the fireplace chimney. A mud room and adjoining lavatory are convenient from the garden porch. Garage has space for a work bench. Entrance vestibule opens into a foyer. Master bedroom has a spacious dressing room adjoining private bath. An outdoor closet provides storage for garden tools. Sliding glass doors merge dining room and porch. This is plan 9445AP by Rudolph A. Matern, architect, 90-04 161st St., Jamaica 2, N.Y. The house covers 1,613 square feet, without garage and porch.

When should this be done? Will the pear tree have suffered from the November cold spell? W.F.G.  
Answer — Ordinarily you would have pruned this in February or early March. This year, we are being advised to wait until growth starts before pruning. Some injury may have resulted from the freeze and it would be best to do all the pruning at onetime—taking out the injury and cutting back the tree. Cuts suffer more from cold weather, and if an already weakened tree is pruned severely, injury may be too great.

Question—Can you give me the size of a ping pong table? This should be a size that would meet official requirements for the game. L.P.  
Answer—Am told that the table should be nine feet in length by five feet in width. The table top should be 30 inches above the floor. Table top should be painted dark green with 3/4 inch white line around the outer edge and a similar line lengthwise down the center.

Question—Can a hawthorne be started from a cutting? There is one on my grandfather's place I'd like a start from but am told that this tree will not start from a cutting. It looks like it should. B.G.E.  
Answer — While I have never tried it, I should think a hawthorne would start quite readily from cuttings. Take your cutting about six inches long and dust with hormone powder. Set the cutting in sharp sand and keep it moist. If you have an electric starting bed, you will be able to start a number of tree cuttings. If you do not, you can still start them, but the casualties will be higher.

## Leg 'Change' Brings Howl

COLOMBO, Ceylon. (AP) — A movie audience howled for its money back here Thursday night. The wrong legs appeared in "Daddy Longlegs," and the audience got switched into "The Seven Year Itch."

## Stock Sale Creates New Ford Position

WASHINGTON (AP) — Things were changing all over the place with the announcement Wednesday that Ford Motor Co. would sell some of its stock.

## Missing Flier Search Halts

TOKYO (AP) — Search for 1st Lt. Frank D. McKillit, 23, of Walla Walla, Wash., missing since Dec. 15 on a flight over Sagami Bay, has been abandoned and he is assumed dead, the Navy said Saturday.

## Canada Immigration Off

OTTAWA (AP) — Because of labor shortages, Canada is offering two-year or longer, interest-free loans to pay passage of immigrants and dependents from their homes in Europe to where they settle. Immigration declined to 86,607 in the first nine months of this year from 126,833 in the comparable period of 1954.

## Stock Sale Creates New Ford Position

WASHINGTON (AP) — Things were changing all over the place with the announcement Wednesday that Ford Motor Co. would sell some of its stock.

## Missing Flier Search Halts

TOKYO (AP) — Search for 1st Lt. Frank D. McKillit, 23, of Walla Walla, Wash., missing since Dec. 15 on a flight over Sagami Bay, has been abandoned and he is assumed dead, the Navy said Saturday.

## Canada Immigration Off

OTTAWA (AP) — Because of labor shortages, Canada is offering two-year or longer, interest-free loans to pay passage of immigrants and dependents from their homes in Europe to where they settle. Immigration declined to 86,607 in the first nine months of this year from 126,833 in the comparable period of 1954.

At Christmas

Our wishes go out to all our friends and patrons for a bright and cheerful Holiday Season.

**CAPITAL SHADE AND DRAPERY**

1695 Fairgrounds Road Ph. 4-1856  
MANUFACTURERS OF VENETIAN BLINDS

Best Wishes

To our friends and neighbors . . . greetings and sincere holiday wishes. For Christmas and The New Year

Sanitary Service Co. and Employees  
215 S. High

**AIR-VENT ALUMINUM AWNINGS**  
Porch Hoods Public Covers  
Custom Made in Our Shop  
For Everything in Your Window  
SEE **ELMER** THE BLIND MAN  
Free Estimates Day or Night  
Ph. 37228 (Terms) 2870 Center St.

**DRAPERIES** Custom Made In Our Shop  
• Cornice Boards • Slip Covers • Valances • Travertine Rods  
SEE **ELMER** THE BLIND MAN  
Free Estimates Day or Night  
Ph. 37228 (Terms) 2870 Center St.

**FREE ESTIMATES**  
On Floor Coverings  
**NORRIS-WALKER PAINT COMPANY**  
1718 Front Phone 6-2379

"All Kinds of INSURANCE and SURETY BONDS"

**BECKE and WADSWORTH**

VISIT US IN OUR NEW QUARTERS  
121 No. HIGH (MASONIC BUILDING) PH. 4-3333