

Many Trees on Salem Streets Suffering From Lack of Care

By LILLIE L. MADSEN
Garden Editor, The Statesman
NONE OF MY BUSINESS—This story began (as so many of the things you read begin) because some newspaper person was some place he (she in this case) had no particular business in being:

I was wandering about a street in Salem admiring some pretty shrubs, some pretty flowers and some beautiful trees. That's when I spotted the trees that used to be beautiful but certainly no longer were. They struck me full in the eye.

Salem has long been noted for its beautiful trees. I, like almost everyone else, living in these parts, have relatives in the East, Midwest, the South. These relatives visit, for which we are thankful. We always take them for a ride about Salem to show them the beauty of the Salem homes, the streets, the parks, the gardens. For which they are thankful!

When I came across these trees that used to be beautiful but no

longer were, I thought: What if this should happen to all of Salem's trees—or even to quite a few of them?

THERE COULD BE A LAW—That's what I sort of thought as I went to call on Walter Wirth, Salem Park Superintendent.

"Are tree surgeons in Salem licensed as are plumbers or electricians?" I asked.

The answer was "No" but work is being done along this line, Wirth informed me.

He didn't like, he admitted, to see trees "murdered" either. It takes a long time to grow a tree, he said, and they can be destroyed in such a short time—unless the pruner knows what he is about. Sometimes, too, he went on, trees are removed unnecessarily. Some times trees aren't removed that should be.

The City of Salem already has one ordinance and pieces of others, which provide some protection for city trees. But it isn't strong enough. It doesn't have a full set of teeth, the park superintendent explained.

"We need a more forceful law. One that gives us not only advice but action and backing for the action," he said.

The existing law has invested the planting, care and protection of street trees within Salem in the superintendent of parks. He has been charged with the duties of enforcing the provisions of the ordinance which covers planting, removal, care, maintenance and protection of the trees in the public streets and alleys.

Now the law provides that no individual, firm or corporation may remove, destroy, cut, break, climb or injure any tree that is growing in the streets (which means parkways) of the city, without a written permit from the park superintendent.

If for some reason anyone wants a tree removed or pruned that is growing on the streets or alleyways, permission must be had.

It is also unlawful, during the erection, repair, alteration or removal of any building or structure, to leave any tree upon any public streets in the vicinity without such good and sufficient guard as to prevent injury to the trees.

The Oregon Statesman
Statesman, Salem, Ore., Sunday, Aug. 21, 1955—(Sec. 2)—1

Keep Garden Flowers Cut



It's harvest time in the gardens that were planted early and well cared for. But blooms such as these marigolds may be had late into fall if continuous good care in feeding and watering is given the garden. Part of the "good care" in the flower garden is keeping the withered flowers cut. If the strength of the plant is permitted to go to forming seeds, the blooming season will be short.

Garden Calendar...

- Aug. 21—Gearhart Flower Show.
- Aug. 22-23—Fuchsia Show, Frederick and Nelsons, Seattle.
- Aug. 24-28—Washington County Flower Show, Hillsboro.
- Aug. 25-26—City of San Francisco Flower Show, 2 to 10 p.m. each day. City Hall.
- Aug. 25-26—Dahlia Show, Bremerton, Wash.
- Aug. 26-28—Polk County Flower Show, Rickreall.
- Aug. 26-27—Oregon Fuchsia show, Meier & Franks, Portland.
- Aug. 27—Silverton Jay-C-Ettes Flower Show, Eugene Field auditorium, 2 to 9 p.m.
- Sept. 3-10—Oregon State Flower Show, State Fairgrounds, Salem.
- Sept. 3-4—Pacific Northwest Dahlia Show, Floral hall, Forest Park Everett, Wash.
- Sept. 8-11—Levant Fair, Bari, Italy.
- Sept. 14-30—Marseilles Fair, Marseilles, France.
- Sept. 15—Men's Garden Club of Salem first fall indoor meeting, YMCA, 7:15 p.m.
- Sept. 16—Flower show at Lyons Catholic Community Hall, Mill City and Lyons Garden Clubs.
- Sept. 20—Salem Rose Society meeting, 8 p.m. YMCA.
- Sept. 22-24—Woodburn Flower Show North Marion County Fair, Garden Clubs in Marion County invited to exhibit.
- Sept. 24-25—Oregon Trail Council of Garden Clubs flower show, Pendleton.
- Oct. 1-2—Seventh annual Corvallis Early Chrysanthemum Show and Field day, 1 to 5 p.m.
- Oct. 1-2—Early English Chrysanthemum show, Mt. Scott Community Center, Portland.
- Nov. 3-6—Annual Chrysanthemum show, Chamber of Commerce Visitors Information Center, 1020 S. W. Front Ave. Portland.

BEFORE YOU BUY

your next car

FIND OUT ABOUT STATE FARM'S LOW-COST "BANK PLAN" FINANCING

You may save as much as \$100 or more on the purchase of a new or used car when you use the State Farm "Bank Plan". You save on financing through your nearby bank—at their low bank rates. This saving, plus your savings on State Farm insurance amounts to real money. And—your State Farm Agent handles all the arrangements for you. Call today—your State Farm Agent is only a phone call away.

It Pays to Know Your STATE FARM AGENT

"Larry" beuhler
626 N. High St.
Ph. 4-2215

BUILD WITH UNILITE
Glass Fiber Plastic Panels Translucent and Shatterproof For Everything from Your Window SEE **ELMER** THE BLIND MAN
Free Estimates Day or Night Ph. 37328 (Terms) 3870 Center St.

RENT A TOOL
Do It Yourself It's Cheaper **OPEN SUNDAYS**
Salem's Oldest Tool Rental **HOWSER BROS.**
1180 South 12th St.

WINTER won't wait!

And Make TIME TO CHECK FURNACES

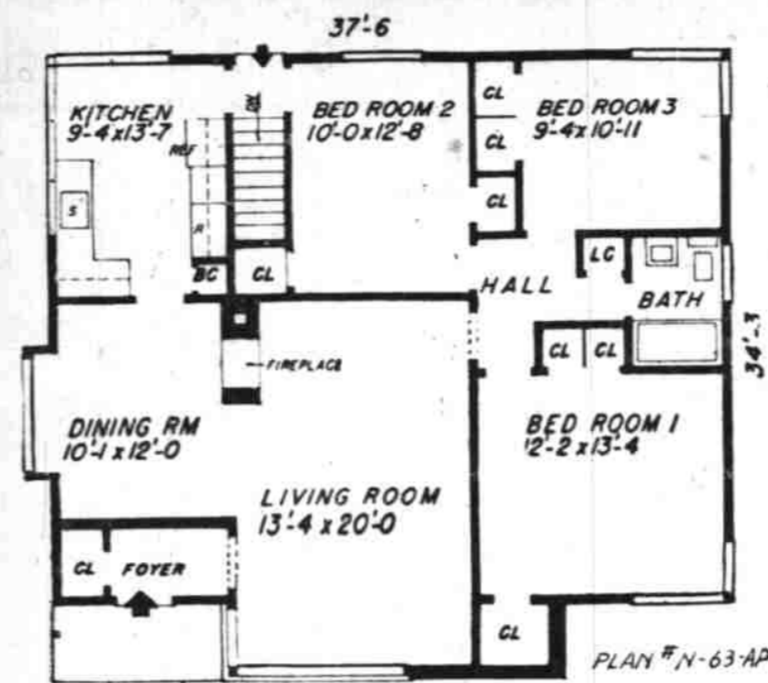
FURNACE REPAIRS

Phone 3-3603 Today

D. E. COOPER & SON
540 Hood St. Salem, Oregon

Home and Garden... By Lillie L. Madsen

HOMES FOR AMERICANS



AP Newsfeatures
DEMONSTRATING how an economical house can be attractive, this plan is suitable for a 50-foot lot, yet has the tone of a ranch house. Designed by Herbert W. Neumann, architect, for the Archway Press, 117 W. 48th St., New York 26, N.Y., the house, N-63-AP, covers 1,220 square feet.

Questions & Answers

Question—Want to divide my bleeding heart. When to do?
R. N.
Answer—Right now is a good time. In dividing, be sure to leave one eye with each division.

Question—Can you tell me what is wrong with sample of Jade plant enclosed. I have given it good, rich soil, and watered it well. This is the second one I have lost. I like this plant so well and can't understand why it won't grow for me. Everytime I go into Portland, I buy a new one—and it dies within weeks. Is there some disease these have? H. T.

Answer—You undoubtedly have given it too good care. A Jade plant wants to be a little on the dry side and it doesn't relish too rich soil. Try not to water the new one so much.

Question—Can you tell me when the Oregon Association of Nurserymen meet? And where?
M. W.
Answer—Gearhart (at the coast) Sept. 7-9.

Question—When will the first cut flower show be judged at the Oregon State Fair this year? Someone told me that the flower show would contain only a few cut flower divisions and that these would not be shown until the middle of fair week. P. R. N.

Answer—Can't imagine who told you this. The cut flower show, like the entire State Fair Garden show, will be much larger this year. The first cut flowers will be judged on opening day. Another set will be judged on Labor Day and again on the following Thursday.

Opening day competition calls for arrangements featuring a shaving mug or mustache cup, a bicycle built for two, and similar Gay 90s themes.

The show is expected to be about 50 per cent larger.

Question—Can one root cuttings from violas and pansies? Mine have grown so scraggy and yet I hate to cut off the branches and throw them away. O. C. Y.

Answer—These cuttings will root rapidly in soil that is kept moist and shaded. They root particularly well in sand, but must be replanted shortly after rooting or they will not continue to grow. If you cut your scraggy branches back, feed and water

Blackcaps Infected by Anthracnose

Heavy infections of anthracnose on this year's growth of blackcaps is present in many Willamette Valley fields, county extension agents are pointing out. Wet weather during the spring months may have been responsible for the heavy buildup of the disease, they add.

Anthracnose is identified by round, purplish sunken spots on the canes. These spots restrict the upward movement of water and nutrients from the roots to the canes, resulting in reduced yields.

In some fields, infections on old canes are more severe than on new wood. Normally, the fungus is easily controlled by spraying in February with lime sulphur at the rate of ten gallons to 90 gallons of water. In heavily infected fields growers have been advised to apply a second spray in the spring when new shoots are from 15 to 18 inches high, using a weaker lime sulphur solution.

County agents report that it has not yet been fully determined whether sprays applied this late in the season will be of value; since much of the fungus already may be matured. All blackcap growers are told to go over their fields now and check for the disease, as well as remove and burn canes that bore this year.

Lilies Not So Particular



Experiments with lily bulb production in this country have given us several new hybrid strains, and led to discarding some of the advice for growing lilies which was formerly accepted. The idea, for example, that some lilies must have acid soil is no longer considered valid by some. The strain pictured here is the Olympia Hybrid and it will thrive in almost any garden soil.

Hardy Lilies Grow Best When Planted in Fall

Bulbs of hardy lilies should be planted in the fall, where possible. Otherwise they will spend the winter in storage and when planted in the spring will have been weakened by the experience. Varieties which find your garden to their liking will thrive and bloom with little attention, and live for many years undisturbed.

What lilies must have is a well-drained, deep, rich porous soil, plus an ample supply of moisture while they are growing. Do not try to grow them in heavy clay, or in a location where water stands after heavy rains, and the soil is slow to dry out.

Lilies will not thrive in shade except the lightest. The soil in which they are planted should be worked a foot deep. If your soil is chiefly clay select a location on a slope to the south and work into the soil as much organic matter as you can. Peat, sewage sludge, well decayed manure, peat moss, or compost are good.

Depth of planting should be varied with the size of the bulb. There should be soil above the bulb equaling the diameter of the bulb. Lilium candidum, always and exception to this, should barely be covered with soil. Each variety of lily it seems has its favorite depth, but if you plant them as here suggested they will find their own proper level.

This Week In the Garden

Divide perennial poppies and re-plant.
Divide bleeding hearts and re-plant.
Prune wisteria vines.
Give chrysanthemums an extra feeding of fertilizer.
Don't neglect fuchsias, feed and water well.
Keep withered flowers off rose bushes.
Cut delphiniums back.
Cut out old raspberry canes.
Continue sanitary program in garden. Old rose cuttings, raspberry cuttings or other debris, frequently harbor diseases.
Take cuttings of many shrubs and trees now. They'll root easily.

Burglar Bungles Job Completely

DETROIT (AP)—Thomas J. Tiggett did everything wrong. Police said he bungled a lumber yard burglary so badly they were able to nab him.

Taken to a police station, Tiggett sat down right under a "wanted" circular. It stated Thomas J. Tiggett was wanted as an escapee from Southern Michigan Prison. He was ordered returned there.

Building or Remodeling?

Alsynite
ORIGINAL FIBER GLASS PANELS
the new kind of glass that installs as easy as sheet metal

NECESSARY EQUIPMENT
BETHLEHEM, Conn. (AP)—Volunteer firemen were burned up when someone swiped dozens of pin-up pictures that had adorned the firehouse walls for months. The chief said the pictures served a useful purpose by promoting attendance at company meetings.

DRAPERIES Custom Made In Our Shop
Valances • Traverse Rods • Cornice Boards • Slip Covers
SEE **ELMER** THE BLIND MAN
Free Estimates Day or Night Ph. 37328 (Terms) 3870 Center St.

W. P. Fuller
Paint & Glass
166 S. Liberty St.
Phone 4-2207

Montgomery Ward
155 N. Liberty Phone 3-9998

ATTENTION— ALL HOME OWNERS... INTERESTED IN WINTER COMFORT? YOU ARE? THEN IT'S PERIMETER HEATING BY WARDS Wards Heating Equipment Invites Comparison FOR FACTS — CHECK THESE!

- Prompt installation service
- Satisfaction guaranteed
- One-year free service
- Job correctly engineered
- Stops drafty floors, sweaty windows
- Eliminates dry-rot
- Free estimates and surveys

Have Wards Install Your New Furnace Now During Mild Weather For Next Winters Comfort

COME IN PHONE, OR MAIL COUPON

Montgomery Ward Retail Store Salem, Oregon
I am interested in receiving information on the following type of heating:

NAME _____
ADDRESS _____
CITY _____ PHONE _____

GENERAL FINANCE CORP.
137 SO. COMMERCIAL ST. PHONE 3-9161

FREE ESTIMATES
On Floor Coverings
NORRIS-WALKER PAINT COMPANY
1710 Front Phone 4-2279

AIR-VENT ALUMINUM AWNINGS
Porch Hoods Patio Covers Custom Made In Our Shop For Everything In Your Window SEE **ELMER** THE BLIND MAN
Free Estimates Day or Night Ph. 37328 (Terms) 3870 Center St.

GENERAL FINANCE CORP.
137 SO. COMMERCIAL ST. PHONE 3-9161