

## City Chiefs to Study Job, Pay Classifications

Salem city department heads will start studying the new job and salary classification plan today, City Manager J. L. Franzen said Tuesday.

The recommended pay plan which was released Monday night would set incentive pay steps for city employees and would mean somewhat higher pay than present rates in some classifications. Cost to the city is estimated at \$30,000 over the first two-year period of its use.

Franzen said this plan would receive thorough study in the coming months, so that any decision to be reached by the City Council could be made before the budget drafting work a year from now. It will not figure in the 1955-56 city budget coming up next month for final Council adoption.

**To Receive Copies**

Department heads will receive copies of the bulky report which was prepared by State Civil Service specialists at the city's request. Franzen said he would take the matter up with the department heads for their recommendation after they have studied it and consulted with their employees.

The city's 300 employees would be assigned to one of 86 job titles. Each job would fall in one of 24 pay ranges divided into six steps with about 6 per cent pay increases in between. Rules would be adopted to coordinate personnel policies and establish consistent policy on vacations, sick leave and other items.

**Classes Listed**

The job classifications are listed below with present pay shown in parentheses, and with pay steps indicated. All figures refer to monthly pay in dollars, including adjusted monthly pay of those city workers on hourly pay rates but working regularly. Some titles show no present pay because of current wide variance of salaries for those jobs in different departments.

**Clerical, Fiscal**

Junior stenographer, 200-211-222-234-247-260.  
Senior stenographer, 204-247-260-274-286-304.  
Secretary, 288-304-321-338-356-374.  
Clerk typist I, 180-190-200-211-222-234.  
Clerk typist II, 247-260-274-286-304-321.  
PEX operator (230), 190-200-211-222-234-247.  
Bookkeeper I, 200-211-222-234-247-260.  
Bookkeeper II, 274-286-304-321-338-356.  
Chief clerk, 288-304-321-338-356-374.  
Assistant, 321-338-356-374-392-410.  
Storekeeper, 247-260-274-286-304-321.  
Airport manager (406), 338-356-374-392-410-428.  
**Inspection, Protection & Enforcement**

Building and electrical inspector, (374.50), 321-338-356-374-392-410.  
Fire inspector (333.44), 304-321-338-356-374-392.  
Fireman (325.44), 274-286-304-321-338-356-374.  
Engineer (325.44), 288-304-321-338-356-374.  
First aid captain (368.95), 321-338-356-374-392-410.  
Fire captain I (368.95), 304-321-338-356-374-392.  
Fire captain II (368.95), 321-338-356-374-392-410.  
Battalion chief (368.10), 338-356-374-392-410-428.  
Assistant fire chief (427.20), 374-392-410-428-456.  
Fire chief (499.15), 486-513-542-571-600-628.  
Poundmaster (311.37), 274-286-304-321-338-356.  
Detective (370.75), 304-321-338-356-374-392.  
Juvenile officer (370.75), 304-321-338-356-374-392.  
Police matron and stenographer (333.45), 274-286-304-321-338-356.  
Communications dispatcher (370.75 to 390.75), 288-304-321-338-356-374.  
Communications technician (370.75), 304-321-338-356-374-392.  
Communications sergeant (378.95), 304-321-338-356-374-392.  
Communications captain (408.10), 321-338-356-374-392-410-428.  
Patrolman (345.45), 274-286-304-321-338-356.  
Police sergeant (378.95 to 388.45), 321-338-356-374-392-410.  
Police captain I (418.10), 338-356-374-392-410-428.  
Police captain II (428.10), 374-392-410-428-456.  
Chief of police (509.15), 486-513-542-571-600-628.  
**Administrative, Legal**

Water department manager (377.50), 486-513-542-571-600-628.  
City recorder (309.15), 304-321-338-356-374-392.  
City treasurer (40.83), 366-374-392-410-428-456.  
Assistant city attorney (216), 304-321-338-356-374-392.  
City attorney (377.50), 462-486-513-542-571-600.  
Purchasing agent (406), 338-356-374-392-410-428.  
Municipal judge (313.83), 374-392-410-428-456.  
City administrator (866), 703-742-781-821-859-897.  
**Engineering Trades, Maintenance and Allied**

Engineering aide I, 222-234-247-260-274-286.  
Engineering aide II, 274-286-304-321-338-356.  
Instrumentman, 304-321-338-356-374-392.  
Draftsman, 260-274-286-304-321-338.  
Engineering designer (374.50), 338-356-374-392-410-428.  
Assistant city engineer (453.16), 374-392-410-428-456.  
City engineer (377.50), 513-542-571-600-628-666.  
Meter reader, 274-286-304-321-338-356.  
Water meter serviceman, 288-304-321-338-356-374.  
Water source attendant (300.14), 222-234-247-260-274-286.  
Water source foreman (347.75), 288-304-321-338-356-374.  
Meter foreman (342.40), 304-321-338-356-374-392.  
Water services supervisor (338.99), 304-321-338-356-374-392.  
Caretaker, 234-247-260-274-286-304.  
Utility worker I (1.30 hour), 211-222-234-247-260-274.  
Utility worker II (1.50 to 1.58 hour), 234-247-260-274-286-304.  
Utility worker III (1.58 to 1.63 hour), 274-286-304-321-338-356.  
Utility foreman I (1.73 hour), 288-304-321-338-356-374.  
General foreman (1.83 hour), 304-321-338-356-374-392.  
Equipment operator I (1.53 hour), 274-286-304-321-338-356.  
Equipment operator II (1.63 to 1.73), 274-286-304-321-338-356.  
Equipment operator III (2.38 to 2.48), 201-211-222-234-247-260-274-286.  
Automotive serviceman, 234-247-260-274-286-304.  
General mechanic, 288-304-321-338-356-374.  
Shop foreman, 321-338-356-374-392-410.  
Sewage plant operator (321), 234-247-260-274-286-304.  
Sewage treatment supervisor (307.20), 321-338-356-374-392-410.  
Custodial worker, 180-190-200-211-222-234.  
Custodial work supervisor, 211-222-234-247-260-274.  
Park gardener (282), 222-234-247-260-274-286.  
Park foreman (325), 274-286-304-321-338-356.  
Park superintendent (416.67), 356-374-392-410-428-456.  
Book messenger (100), 180-190-200-211-222-234.  
Library assistant, 190-200-211-222-234-247.  
Supervising library assistant (250),

## Decides to Trust Life Savings to Bank



MINNEAPOLIS—Amen Balkin, 63, odd jobs man, fills out a deposit slip for his life savings which he took to a bank in a gunnysack. Police convinced Balkin to deposit the savings after he was asked to leave his room in a low priced hotel so it could be cleaned up. Bank employe Ted Drake holds the top of the sack which contained \$5,754. (AP Wirephoto.)

## Another 870 County Kids Get Vaccine

Another 870 Marion County youngsters received Salk polio inoculations Tuesday in the second day of mass vaccinations from serum furnished by the National Foundation for Polio Eradication through the Public Health Office. The total was 74 percent of the 1,176 eligible to receive the shots at four county centers. This is slightly higher than the percentage for the first day's inoculations.

Highest total for a center was at Salem Heights where 290 of 317 youngsters in the first four grades showed up for their inoculations. Schools represented there were Salem Heights, Liberty, Roberts, Halls Ferry, Riverside and Rosedale.

Other counts were 207 of 269 at Englewood where only Englewood School youngsters were scheduled Tuesday; 98 of 149 at Hubbard and including Butteville, Donald, Broadacres and Aurora; and 275 of 411 at Cum-

ings School and including Keizer School. The two-day total for Marion County was 1,305 inoculations by the staff of volunteers including doctors of the Marion-Polk Medical Association. In Polk County, only 80 of 150 eligible youngsters received shots in Tuesday morning's schedule at Lyle School of Dallas. Children from the first two grades at Lyle, Orchards, Orchard View, Salt Creek and Dallas Seventh Day Adventist Schools were inoculated there. Count from the clinic at Perrydale School where some 30 pupils were eligible was not available Tuesday night.

The week-long program continues today at Richmond School where both Richmond and Sunnyside children will be inoculated; at Highland School which will also include Livingston, Grant and Garfield Schools; at Eugene Field School, Silverton, which will also include Crooked Finger, Scotts Mills, Silverton 7th Day Adventist, McLaughlin, Evens Valley, Silver Crest, Victor Point, Willard, St. Paul Parochial, Evergreen, Brush Creek, Bethany and Central Howell; and at Mill City which will also include Detroit and Gates. The Polk County schedule today will include Independence and Buena Vista at Independence this morning, and Monmouth and Antioch at Monmouth this afternoon.

## Mrs. Bales, 66, Succumbs

Mrs. Emma K. Bales, 66, until January a practical nurse at the Fairview Home, died early Tuesday at her 1346 Hoy St.

A Salem resident since 1940, Mrs. Bales, whose widower is Carl Bales, came here from Skidmore, Mo., in 1940 and worked at various assignments the first three years and the remaining 12 years at the Fairview Home hospital.

She was born April 4, 1886, in Turley, Tex., and was a member of the Christian Church.

Besides her widower she leaves a sister, Mrs. Goldia Killen, Salem; brother Walter E. Bell Independence, Mo.; several nieces and nephews.

Arrangements are in charge of the Virgil T. Golden Funeral home.

## Linn Livestock Folk Ready Four Events

By LILLIE L. MADSEN  
Farm Editor, The Statesman

Linn County livestock folk have planned four big events for the coming four weeks.

First of these will be Linn County's half-million dollar sheep industry show to be held at Scio as the annual Fat Lamb and Wool Show, Saturday, W. S. Sparks, president, has announced.

**Business People to Milk**

The best milkers in Albany will vie in a milking contest Wednesday as the second event. This is the kickoff for the Linn County June Dairy month activities. The event has been set for 2:30 p. m. on the corner of First and Broadway streets, and will feature, in addition to the milking contest, ice cream eating and milk drinking contests. Contestants will include prominent business and professional people of Albany.

Arranging the affair are Kenneth Cushman of the Albany Democrat-Herald, Darrell Lindsey of Boardens and Wallace Caldwell, advisor for the Albany Future Farmers.

Third event will be the annual Linn-Benton All Breed Dairy Show to be held June 4 at the Linn County Fairgrounds. Judges for the fair list Al Lindow of Portland, judging Holsteins; Rex Ross of

## Cardinal's Condition 'Slightly Improved'

SEVILLA, Spain (AP)—The condition of Pedro Cardinal Segura y Saenz, archbishop of Sevilla, was improved slightly Tuesday, his physicians reported.

The cardinal, who is suffering a heart deficiency complicated by uremia, underwent an operation for hernia on March 31. He is 75. Monday his doctors said there appeared little hope for his recovery.

## Typhoid Outbreak Laid To Contaminated Well

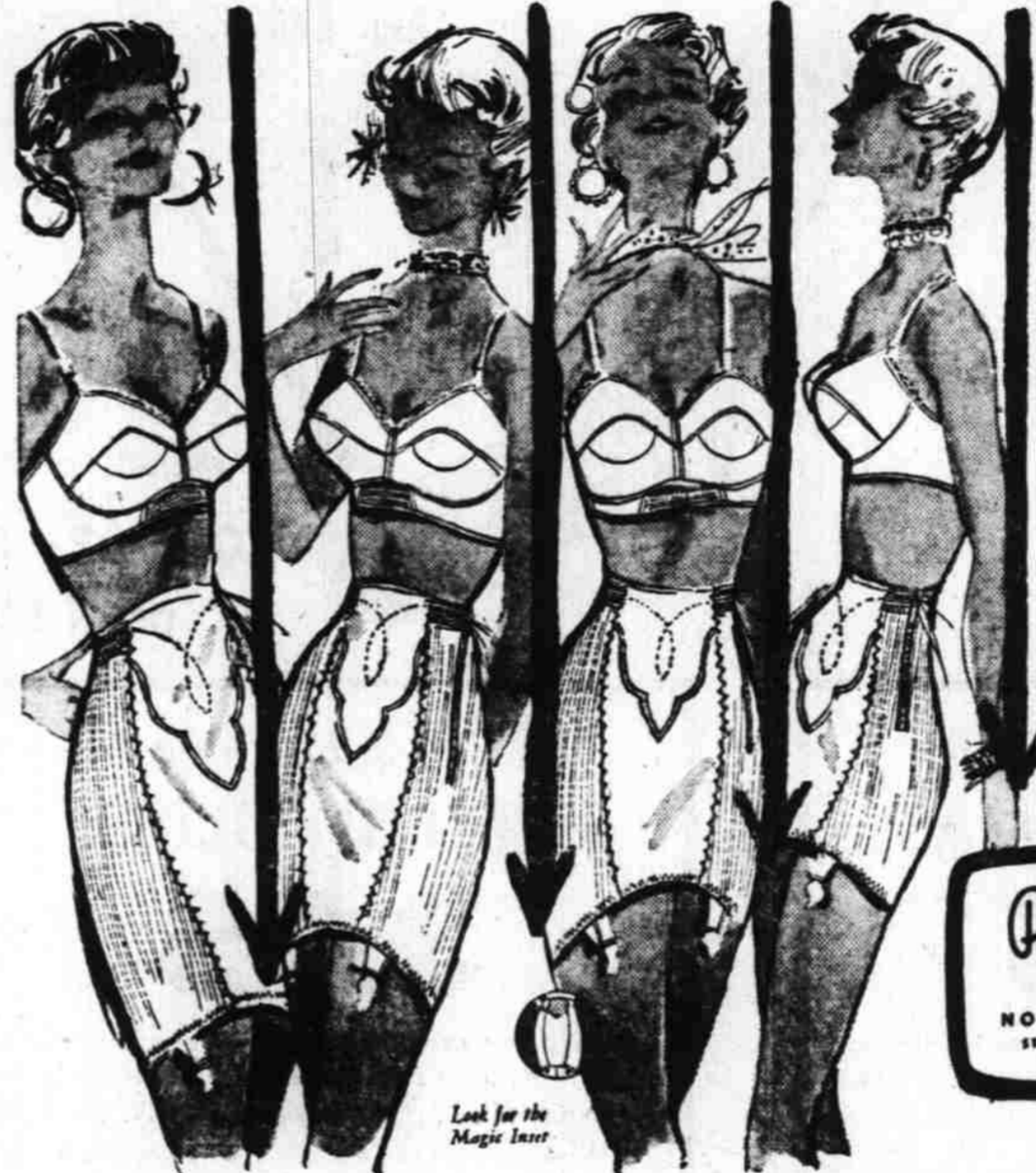
HAGEN, Germany (AP)—A contaminated well on a dairy farm was officially blamed Tuesday night for an outbreak of typhoid fever that has stricken 510 persons. One person has died.

The state prosecutor's office, which ordered the investigation, said water from the well had been used to wash milk containers.

## RED LETTER DAY Roberts Bros.

177 North Liberty

For Flattering Comfort Perma-lift Girdles

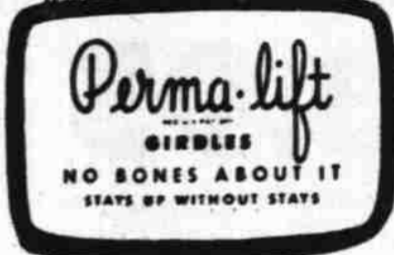


In proportioned lengths  
16-15-14-13 inches

No Bones About It—  
Stays Up Without Stays

Feel wonderful—be comfortable and lovely wherever you go, whatever you do in a "Perma-lift" Girdle styled in the right length for your figure. The correct length is so important that's why "Perma-lift" designs these girdles in 13-14-15 and 16 inches. Remember too, the Magic Inset gives you extra tummy control and eliminates uncomfortable bones, guarantees that your "Perma-lift" Girdle won't roll over, wrinkle or bind, no matter how often you wash or wear it.

You'll love this "Perma-lift" Bra too. The Magic Inset guarantees "The Lift That Never Lets You Down." Be fitted in our corset department today. No 3715 Girdle—\$8.50



## Roberts Bros. 177 North Liberty



carefree summer comfort in **Kedettes**

You'll feel free as the air, walk in easy comfort in U. S. Kedettes! The colors are bright and sunny . . . the styles are flattering to everyone . . . they're all moderately priced. All washable; 4-10; N-M widths.

TOP: Gay Espadrille . . . a swirl of tie to suit your fancy . . . 3.95

RIGHT: Sunny Steps . . . wedge heel with elastic instep strap . . . 3.95

LEFT: Ballet Pump . . . spattered with trailing color; cork-crepe sole . . . 3.45

## Roberts Shoe Department

Is "bustling" with the gayest, smartest collection of Kedettes for summer wear! Smart, casual, summer styles in the prettiest colors of the season! See other styles not shown in this advertisement!

SHOES—DOWNSTAIRS



## POPLIN PEDAL PUSHERS

For the Holiday Week-end

2.98

Warm weather fun days are just around the corner . . . relax in these comfortable pedal pushers. Grey, brown, navy, turquoise, gold, melon . . . accented with contrasting stitching. 10 to 20.

REG. 1.98, SLEEVELESS BLOUSES

Cool blouses to pair with your pedal pushers! Choose from solid colors or prints . . . in a variety of delightful styles. 32-38.

Robert's Sportswear, second floor

## ROBERTS 'COTTON SHOP' LADIES DRESSES

\$5.98

Hundreds of crisp, cool cottons, novelty nylons, Dan Rivers, rayons, miracle fibres—the gayest, smartest group of summery cottons and sheers. Sizes 12 to 52—14½ to 24½.

Cotton Shop—second floor



## Taffeta Lined! Luxurious 6-Ply FAILLE TUXEDO COAT

Fashionable costume coats . . . smart cover-ups for suits, spring and summer sheers! Done in navy and black faille . . . lined with Paris-inspired printed taffeta; deep, bracelet-length cuffs. Sizes 8-18.

Reg. 24.95

13.99