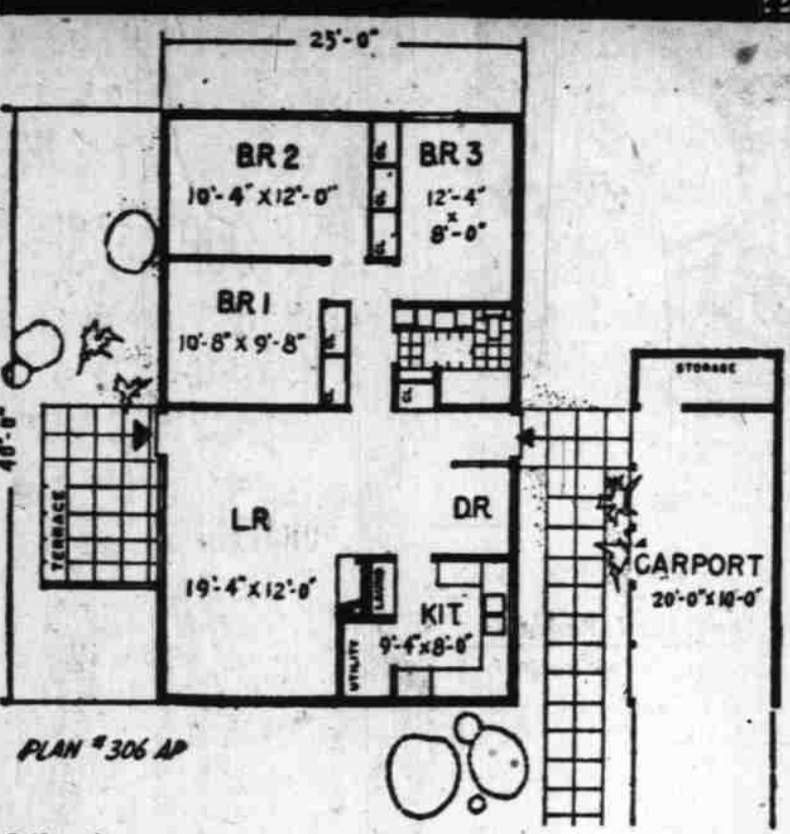


### HOMES FOR AMERICANS



CAREFUL PLANNING can pack three bedrooms and bath, large living-dining room and efficient kitchen in 1,000 square feet of space. This plan shows one way to do it for an economical no-basement house.

### Questions -- Answers

Question -- Last year the flower stems on some of my iris became limp and the buds hung down and didn't open. This spring the leaves came up stiffly and with good color. There are, as yet, no buds but some of the larger leaves are beginning to droop. What is wrong? The soil is not rich. L. D. W.

Question -- Is there a garden book for our locality which covers both flower and vegetable gardens? Have just moved to the country and can see where I'd like to plant things but will the plants grow there, is my question. W. J. L.

### Grow Tasty Leaves for Daily Salad

A tossed salad served daily at the family dinner will do more for your health than any vitamin tablets you can buy. When you grow your own salad leaves you can serve a variety which no one who depends upon the market staples could ever equal.

Romaine or cos lettuce, which produces oval leaves, standing upright, is highly esteemed by French salad experts. It is a good, late lettuce, standing heat better than the leaf varieties. The leaves can be bleached by tying them up as they near maturity, but this merely changes their color, and lessens their vitamin content.

Fast growing loose head varieties, such as Bibb lettuce, are popular with many. Romaine or cos lettuce, which produces oval leaves, standing upright, is highly esteemed by French salad experts.

### Road Atop Dam May Be Closed

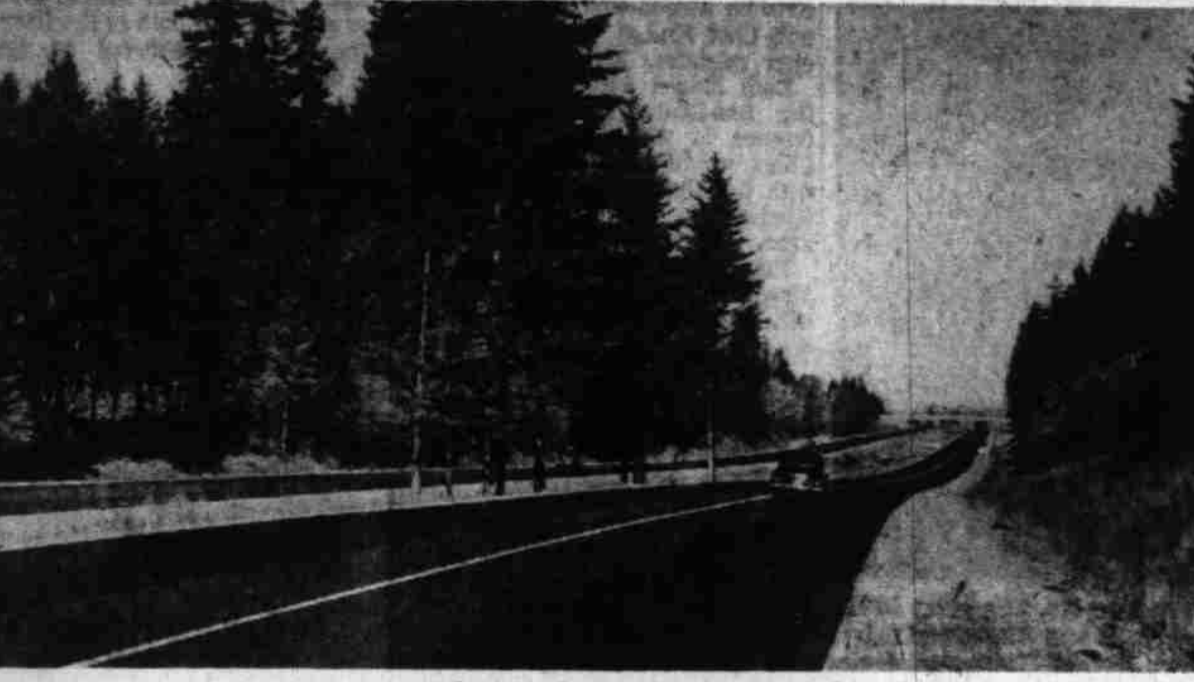
WASHINGTON (UP) — Closing of the road across the top of Grand Coulee Dam to vehicle traffic may be permanent, the Reclamation Bureau announced Friday.

### Alcohol Smugglers' Ring Said Broken

VIENNA, Austria (U) — American military police have broken up a large-scale ring engaged in smuggling contraband alcohol from the Soviet Zone of Austria into Germany, the U. S. Army announced Friday.

## Home and Garden

### Road Planned for Beauty as Well as Speed



Shown here are some of the banks of the new Portland-Salem expressway which are seeded to grass to prevent erosion.



Wherever possible, existing trees such as this little group, have been left on the divided medium strip or along the rights-of-way.

### Salem-Portland Expressway One of West's Prettiest Routes

By LILLIE L. MADSEN, Garden Editor, The Statesman. This highway the first time, I noted that here and there stood some of the trees that had been growing there for a long time. At other places, native shrubs had been added, while at still others, there were materials that were not native.

### Many Plants Share Magic Onion Flavor

Every home gardener should know his onions. Little can be said in favor of this vegetable and its cousins, so far as vitamins and calories are concerned. But when it comes to flavor, it is supreme. Salads would be insipid and cooked dishes flat, for most of us without this flavor.

### Things to Do

- May 22 — African Violet Show, 139 S. W. Broadway, Portland, 10 a. m. to 9 p. m.
May 27-29 — Roseburg Garden Club Show, Episcopal Church Parish hall.
May 30 — Fleet of Flowers, De Poe Bay, 2 p. m.
June 4-5 — Pacific Northwest Regional Iris meeting, Dinner at Silverton, Saturday night.
June 8-12 — Portland Rose Festival.
June 9-11 — Lebanon Strawberry Fair.
June 10-11 — Portland Rose Show, June 11-12 — Eugene Rose Show, June 11-12 — Late Rhododendron show, Crystal Springs Lake Island, Portland.
June 13-14 — American Iris Society annual meeting, Hamilton, Ontario, Canada.
June 14-15 — Annual Convention of Oregon Federation of Garden Clubs, Reed College.
June 18-19 — Salem Rose Society annual show, Isaac Walton League building.
June 30-July 1 — Nehalem Bay Flower Show, Nehalem.
Aug. 6-7 — Portland Gladiolus Society show.
Aug. 17-18 — Gladiolus Festival, Grants Pass.
Aug. 20-21 — Grande Ronde Gladiolus Show, LaGrande.
Aug. 26-28 — Polk County Flower Show, Rickard.
Sept. 2-10 — Oregon State Flower Show, State Fairgrounds, Salem.

bottom with earth and let the hole fill naturally. In rich soil, the leeks will grow to a diameter of an inch or more. Chives for example, are milder, much less odorous, and especially good in salads and cottage cheese. Leeks are preferred by the British for flavoring cooked dishes. And you must know about garlic, of which you can grow a year's supply in about one foot of garden row planted to garlic sets.

If you have to use the space they occupy, dig the daffodils and heel in for completion of ripening process. When hyacinths are through blooming, scatter a complete fertilizer around them and then let the foliage and bulbs ripen naturally. In decaying the clippings generate a lot of heat which may damage the tender tissues. It's really best to compost the grass clippings. However, they can be used on rose beds or rhododendron and azalea beds if they are not piled against the stalks of the plants. Water turtles hibernate and can do so safely when living outdoors. Indoors where it is warm they should be kept active as much as possible and tempted to eat, or they may starve during hibernation. After the first winter hibernating, pet turtles usually lose the inclination.

Advertisement for Camellias Rhododendrons. For Specimen or Hedge RHOMELIA ACRES, 2497 Hollywood Dr. Phone 2-2182.

Advertisement for Folium lawn care. NEW easy lawn beauty! We spray with Folium. Take it easy—let us fertilize your lawn with food-rich 20-20-20 Folium that floods your grass with nourishment through the leaves, the stem and the roots.

Advertisement for UNILITE. BUILD UNILITE WITH Glass Fiber Plastic Panels Translucent and Shatterproof. SEE ELMER THE BLIND MAN. 1710 Front Street, Salem, Ore. Phone 4-2279.

Advertisement for Mueller "CLIMATROL" AND D. E. COOPER & SON. Combine to Give You the Best in a Heating System. Spring Special \$450.00. Installed Complete With Tank—Controls Duct Work Extra. D. E. COOPER & SON, 540 Hood St. Ph. 3-3603.

Advertisement for Black Leaf Malathion. "Stop beetles and bugs that ruin shrubs!" Use BLACK LEAF MALATHION. Regular use of Malathion, 1 or 2 teaspoons per gallon of spray, prevents insect damage in summer. Add 2 teaspoons of Black Leaf Phylon to prevent mildew, black spot and other fungus diseases of shrubs, roses, garden plants and flowers.

Advertisement for WESIX Heating System. THE ONLY COMPLETELY AUTOMATIC HEATING SYSTEM NOW COSTS YOU LESS!... Because WESIX automatic electric Wireheat brings you most accurate thermostatic control individually for every room in your house plus convenient central control and outdoor temperature control when desired.