

At Willamette

May Queen to Be Crowned Saturday

By JULIE MELLOR
Statesman Correspondent

Students at Willamette University are looking forward once again to the annual May Week-end festivities, which will last through the weekend.

"Lo and Behold," will be presented by the drama department tonight, followed by firesides at the living organizations. High school guest who have arrived for the weekend will be treated Saturday to a tour of the campus, the all school sing, the queen's coronation and a baseball game. Saturday evening the queen's ball will be held in the gym and the final event, Sunday church, will close the week-end activities.

Members of the Letterman's club and their dates will hold their annual picnic at Silver Creek falls Sunday afternoon.

Phi Sigma Iota, national romance language honorary, will hold its first banquet of the year to honor new students and a foreign visitor, Andre Pasternae of Toulouse, France. The Banquet is being organized by president Lois Monk of Salem.

Phi Delt Elect
Fred Lincoln of Portland was elected president of Phi Delta Theta this week. Other officers are reporter, Doug Wall of Seattle; treasurer, Wes Malcolm, of Cottage Grove; recording secretary, Ron Fitzgerald of San Mateo, Calif.; warden, Pete Reed of Scappoose; alumnae secretary, Dale Patton of McMinnville; librarian, Charles Marsters of Dallas; historian, Vic Backlund of Bandon; chaplain, Don Smith of Salem; and chorister, Roy Maltby of Salem.

Cap and Gown members will entertain junior women Thursday evening at the home of Dr. Martha Springer, Dean Regina Ewalt will speak to the group on Cap and Gown, and aspirations toward national Mortar Board.

A poem and box of candy announced the engagement of Colleen Chilcote of Lebanon to Tom Foster, of Nyssa.

Miss Chilcote is a freshman majoring in religion. Mr. Foster, a senior, is also a religion major, and is president of Wesley. No date has been set for a wedding.

Girls League Tea to Fete Mothers

The Girls League of Parrish Junior High School will entertain with a mother-daughter tea this afternoon in the school cafeteria between 2:30 and 4 o'clock.

In the receiving line will be Diana Boyd, president of the league; Martha Rheam, secretary; Mrs. Paul Rowell and Mrs. Angeline Self, advisers for the league.

Presiding at the punch bowl will be Sue Johnson, Jody Bourne, Sandy Johnson and Judy Query. Hostesses about the room will be Carrie Marshall, Leslie Nuens, Becky Barnes, Sandy Lloyd, Kay Nickels, Suzette Taylor, Judie Reimann, Eleanor Marshall and Marian Graham.

Serving will be Karen Archer, Pat Phillips, Donna Smyries, Janet Klinefelter, Margaret Wright, Judy Ohmart, Jackie Burns, Colleen Pauley, Leona Shipley, Janice Minton, Winona Adams and Annabelle Hart.

Mrs. Maurice Buchanan is in charge of refreshments and Mrs. Luther Jensen is chairman for the group serving. Mrs. Maybelle Burch is in charge of decorations.

The musical program will be presented by Kay Johnson, Paula Nelson, Nancy Bates and Linda Emmerton.

The Englewood Woman's Club will meet at the home of Mrs. B. C. Miller in Woodburn on Friday. A dessert luncheon will be served at 1:15 p.m. with Mrs. Julia Jennings, Mrs. John Barker and Mrs. Mary Swingle as co-hostesses. A short program will be presented following the meeting.

4-WHEEL DRIVE **Jeep** TRUCK

WILLYS... world's largest makers of 4-wheel drive vehicles

Ask for a demonstration today...

ELSNER MOTOR CO.

352 N. High St. Salem, Oregon

SILVERTON—A May Fellowship tea for the United Council of Church Women will be held Friday afternoon at 2 o'clock at the First Christian Church. Speaker will be Mrs. Anna Tucker, from the National Council in New York. The women will elect officers during the afternoon.

At OCE
Elections Are Held on Campus

By SHIRLEY MCGINNIS
Statesman Correspondent

MONMOUTH — Elections which were held April 27 and 28 on the Oregon College of Education campus, decided who would fill the nine commissioner posts on the 1955-56 student council.

Chosen as commissioners were Beverly Blum, Milwaukie, sophomore; John Carpenter, Portland, assembly; Bill Dayton, Myrtle Point, men's athletics; Keith Jensen, Woodburn, senior; Elizabeth Krautshaid, Hillsboro, junior; Kaye LeFranc, Milwaukie, women's athletics; Dee Ann Larimer, Oswego, social; Sherry Ripple, Yamhill, clubs; and Charlotte Sakamoto, Lahaina, Hawaii, publicity.

Other OCE students running for commissioner offices were, Carolyn Jones, Marge Kronser, Darrel Lunda, Don McCracken, Shirley Plummer, and Ramona Powers, all of Salem; Glen Brostrom, Jim Hall, Pat McManus and Loren Scott, all of Monmouth.

Ruby Taylor, Aloha; Sally Edgar, Bay City; Neva Goeldner, Cheshire; Merle Souls, Creswell; Ruth Cox, Crawfordsville; Bob Wilson, Forest Grove; Russell Curdutt and Jack Graves, Garabaldi.

Marcia Yoder, Hubbard; Audrey Nierhoff, Milwaukie; Marge White, Myrtle Creek; Harrison Bryant, Myrtle Point; Donalee Smith, Noti; Barbara Graves and George Ing, Portland; Clark Lund, Sandy; John Sutton, St. Helens; Myrna Little and Lila Rice, Sweet Home; Glenda Hamar, Toledo; Frances Moser, West Linn; Ray Zweigart, Wolf Creek; and June Yasuhara, Lahaina, Hawaii.

Eight new members were recently tapped by Collecto Coeds, womens service honorary at OCE. The new members are Jean Patton, of Salem, and Sally Edgar, Neva Goeldner, Kaye LeFranc, Charlotte Sakamoto, Marge White, June Yasuhara and Marcia Yoder.

Modern Etiquette
By ROBERTA LEE

Q. If a man is sitting down in some public place and a strange woman stops and addresses a question to him, should he rise?
A. Yes, he should rise.

Q. Should a man who is signing a hotel register use the prefix "Mr."
A. No; he should just sign "Robert L. Porter, Cleveland, Ohio."

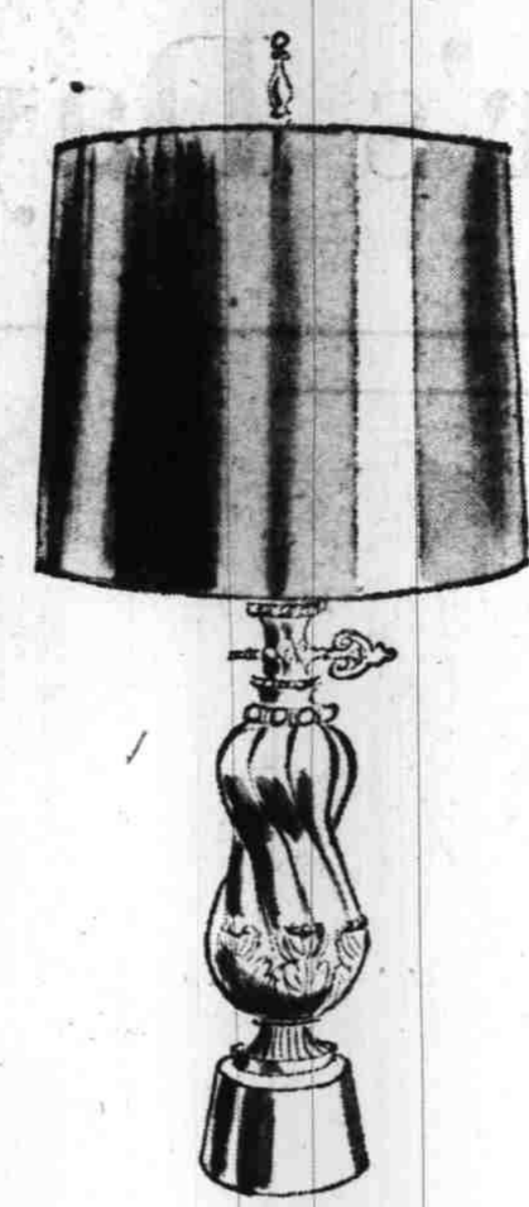
"BILTWELL" DAVENPORTS
Bradley Furniture
1978 North Capitol

Back Ache?— Shoulders Hurt? Don't Sleep?—

Use Schaefer's **DIURETIC TONIC**
SCHAEFER'S DRUG STORE

Open Daily, 7:30 a.m. to 8 p.m.
Sundays, 9 a.m. to 4 p.m.
135 NORTH COMMERCIAL

Lipman's of Salem



Regular 12.95 value . . . save \$4
Bronze Base Table Lamps
8.95

Mother will appreciate the brightness of this cleverly designed reproduction of a French oil lamp. Bronze finish base with swirl leaf decoration. Antiqued gold foil shade. 26 1/2 inch height. 3-way light.

Lipman's lamps, lower level

Three Great Special Values for the Home
Sale! Famous Make Quality Floor Coverings



6.50 Miracle Blends
4.95 sq. yd.

9x12 size, 59.40—as low as \$5 month. These are of a sturdy blend of rayon and nylon yarns, noted for extra durability. In 12-foot widths . . . rose-beige, sandalwood, spruce green and seacrest green. Fine cut pile . . . smart and practical.



11.95 Wool Broadloom
8.95 sq. yd.

9x12 size, 107.40—as low as \$6 month. This special group is made up of our best selling Ambassador broadlooms from one of the nation's foremost carpet makers. Deep, luxurious pile . . . decorator colors to lend real beauty to all your floors.

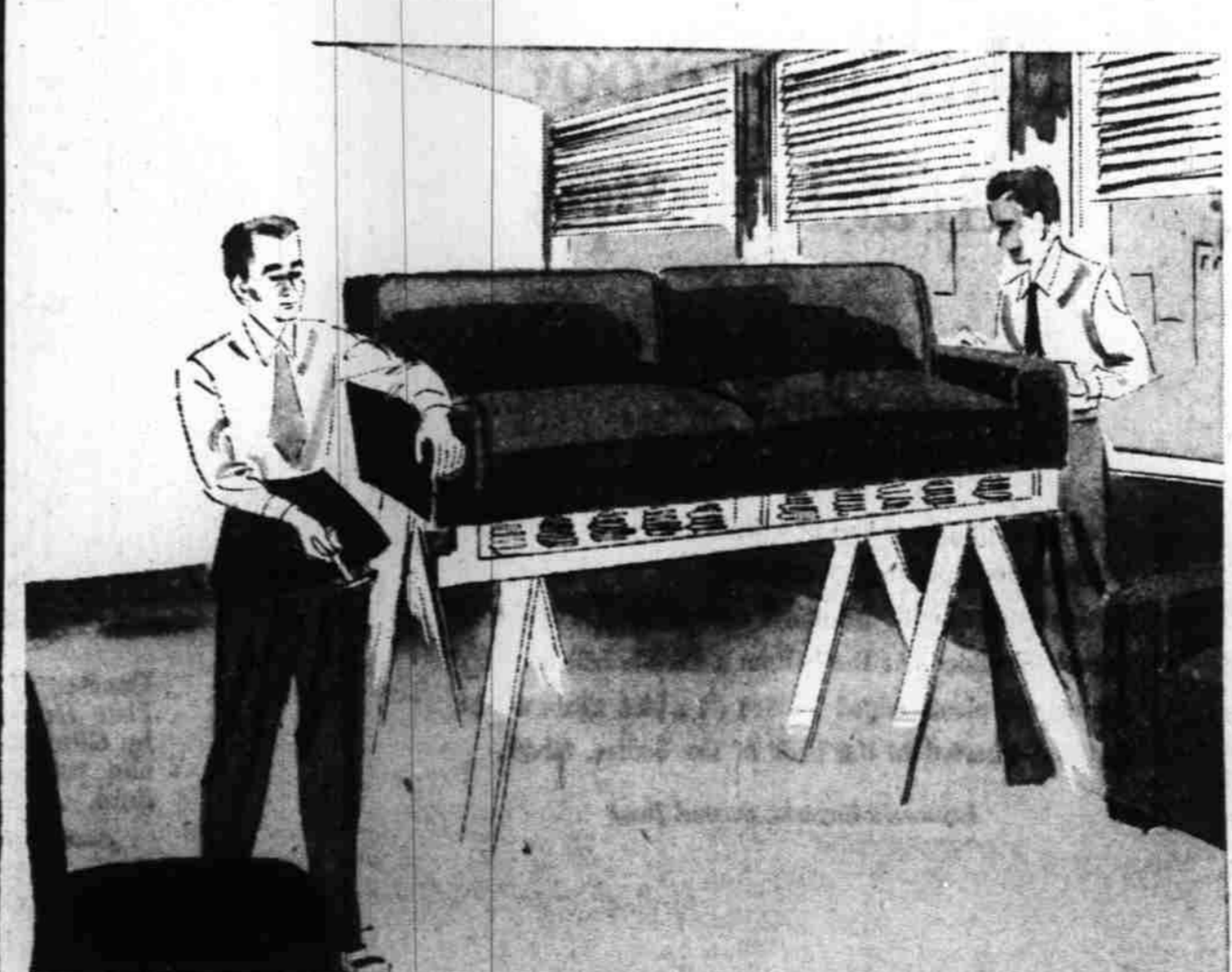


11.95 Wool Carpeting
9.45 sq. yd.

9x12 size, 113.40—as low as 6.50 month. Here's a grand opportunity to secure one of our finest floor coverings at a tremendous saving. 3-ply all wool, heaviest quality. Interesting textured pile. Nutria, green, grey, rose beige. 12 foot widths.

Lipman's rugs, lower level

save a great deal now on expert re-upholstering!



Fabrics were 4.98-7.98, now 3.99 yard

54.95
your standard size chair re-upholstered low as 5.00 a month!

89.95
your standard size sofa re-upholstered low as 7.00 a month!

Spring tonic for your furniture . . . at not-to-be missed savings! Just think—you choose from fabrics like nylon-faced matelasse, textured lures boucles, wool friezes, more, at savings up to half! And the price of the fabric includes complete cost of labor by Lipman's experts, re-building (new webbing, springs, etc., where needed) and pick-up and delivery of your furniture within our delivery area. Hurry for best fabric selection.

Lipman's drapery fabrics, lower level

Park FREE 2 hours with purchase of \$1 and over . . . Lipman's new parking lot