

THE UNITED STATES  
 ★ ★ ★ ★  
 Exclusive Series in  
 THE STATESMAN

# Delaware -- First State to Fly the U.S. Flag

## Small in Size, High In Income

DOVER—While at least 13 Eastern states can trace their history back to the very beginning of the United States, only Delaware can boast—and rightfully so—that it WAS the beginning of this country.

A little over a century and a half ago—on December 7, 1787—a group of deputies representing the people of the Three Counties on the Delaware assembled in the State House on Dover's Green to "fully, freely, and entirely approve" the Constitution of the United States. There were 30 of them—not only loyal sons who, in the words of the State Song, pledged their faith to "good old Delaware," but 30 Americans who were the first to affirm their faith in a great future.

### State Named for Briton

Prior to 1787, the Swedish, Dutch, and British flags flew over Delaware, named for Lord de La Warr, British governor of Virginia. But while the Union Jack was still flying, representatives of Delaware attended sessions of the Continental Congress — George Read, Thomas McKean, and Caesar Rodney, who made his famous ride from Dover to Philadelphia on July 2, 1776—to cast Delaware's deciding vote in favor of the Declaration of Independence. It was largely through the efforts of these men, plus 4,000 patriots who enlisted for Revolutionary service from the second smallest colony, and later John Dickinson at the Constitutional Convention, that the Stars and Stripes was finally able to wave supreme over the new state—the first state.

### Supplied Four Regiments

And when, within a century, it became necessary to test the individuality of the Union, Delaware, a border state and a slave state, chose to preserve that which it had begun by supplying four Union regiments from her small population of 112,216 in 1860.

Today in 1955, the old State House, a shrine of Americanism and a tourist attraction, still stands on the historic Dover Green, for Delaware's rich colonial heritage is well preserved. (It even comes to life each spring on Dover, Odesa, and New Castle Days, when

75 or more Georgian homes and public buildings are opened for inspection.) But there are many other phases of state life which would now be totally unrecognizable by the 30 Constitution ratifiers.

### Many Manufacturers

A block from the Old State House in Dover is the new colonial legislative hall, completed in 1933, housing the legislative and executive offices. Surrounding it are other attractive state buildings and a spacious mall.

Less than a mile away is the home plant of International Latex Corporation, one of the country's foremost manufacturers of latex products. Also in the Dover vicinity are a Coty Cosmetics distributing plant; Richardson and Robins, chicken canners; and Dover Air Force Base, operational headquarters for the Military Air Transport Service and a key link in the Eastern air defense chain. The base is presently undergoing a multi-million-dollar expansion program by the federal government.

### Wilmington Largest

The famed duPont Parkway, one of the first dual highways in

the U. S. and soon to be completely dual the entire length of the state, leads north from the centrally located capital to Wilmington, Delaware's largest city. The location of headquarters and laboratories of E. I. duPont de Nemours, Hercules and Atlas Powder Companies in Wilmington make it the "Chemical Capital of the World."

Near the city, Delaware Park, nationally known race track, is of interest to horse racing fans, with the annual season running from Memorial Day to July 4th.

Between Wilmington and Newark to the south, are a large General Motors plant and one of the Chrysler Corporation. Newark is the state's educational center, site of the picturesque University of Delaware campus.

### New \$46 Million Bridge

Nearby the new \$46,000,000 Delaware Memorial Bridge spans the Delaware River, connecting the New Jersey turnpike with the duPont Parkway and other Delaware highways. The fact that in three and a half years of operation over 25,000,000 vehicles have crossed the bridge indicates the value of the structure to travelers from Maine

to Florida. Also in this vicinity is the New Castle County Airport, a U. S. Air Force base and a civilian passenger terminal.

U. S. Routes 13 and 113 lead south from Dover through Kent County farm land. Agriculture is one of the state's leading industries. In fact, Delaware is nicknamed the "Diamond State" because of its small size (about that of Marion and Polk counties in Oregon) and strategic location on the Eastern Seaboard, enabling it to furnish food for the large metropolitan areas of New York, Philadelphia, Baltimore and Washington.

### 6,000 Acres in Fruit

Principal crops grown in the state are corn, wheat, and soy-

beans, as well as truck crops such as lima beans, sweet corn, tomatoes, peppers, peas, asparagus, and others. Over 6,000 acres are planted to fruit trees, especially apple and peach trees.

However, the most important farm enterprise is broiler production, centered primarily in Sussex County. Last year Delaware produced over 65,000,000 of these young chickens, which accounted for 62 per cent of the farm income. Turkeys, eggs, and dairying are other major farm businesses.

### High Per Capita Income

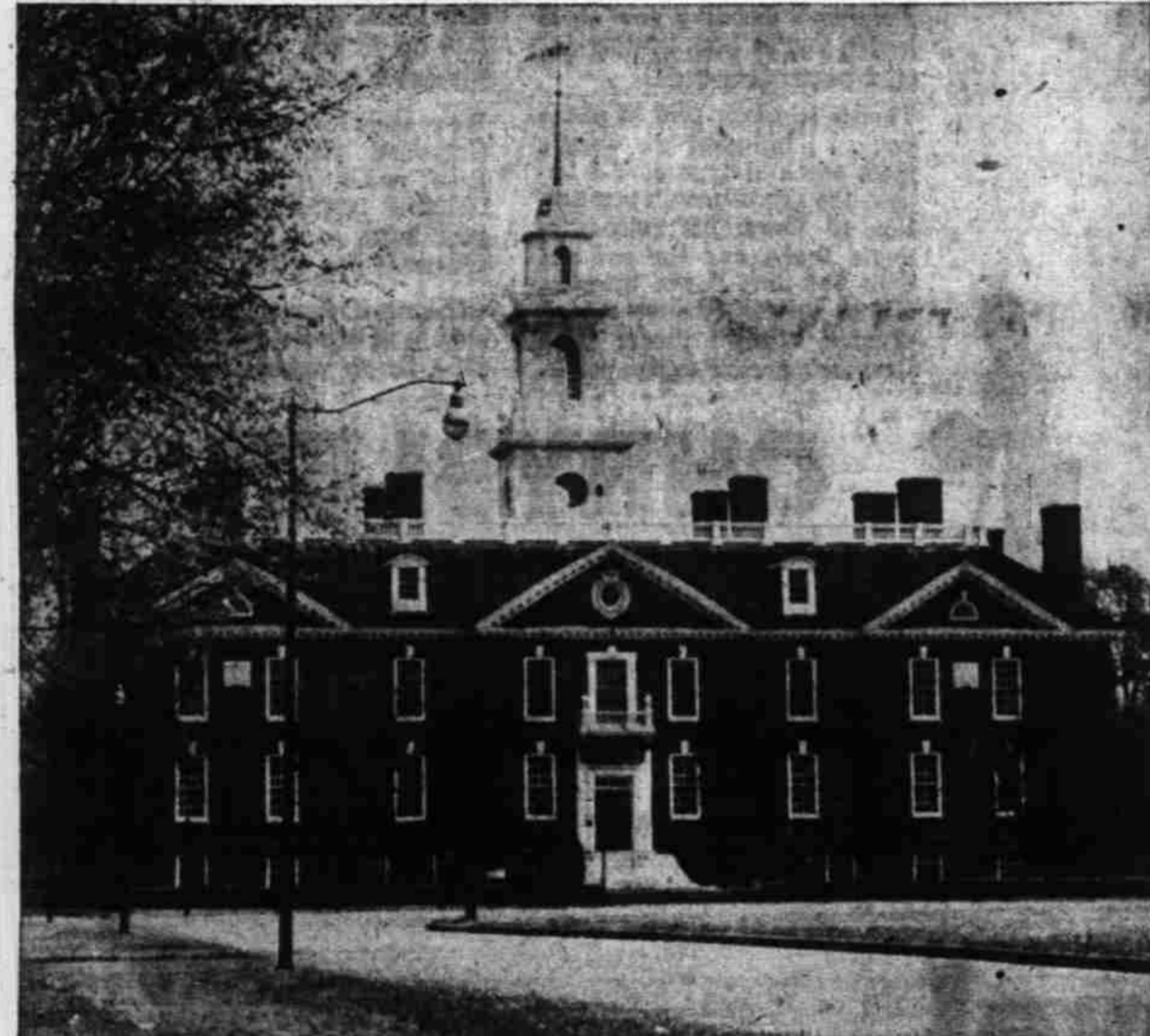
While many industrial concerns are actually located in Delaware, many more from all over the country have taken advantage of the state's "quick and easy" corporation laws. Delaware and corporations are almost synonymous terms, similar to Nevada and divorce.

The First State is also noted for its \$2,260 per capita income in 1953, highest in the nation.

Today Delawareans are using their resources, spiritual as well as material, to affirm their faith in a great future, just as their forebears did back in 1787 at the State House on Dover's Green.



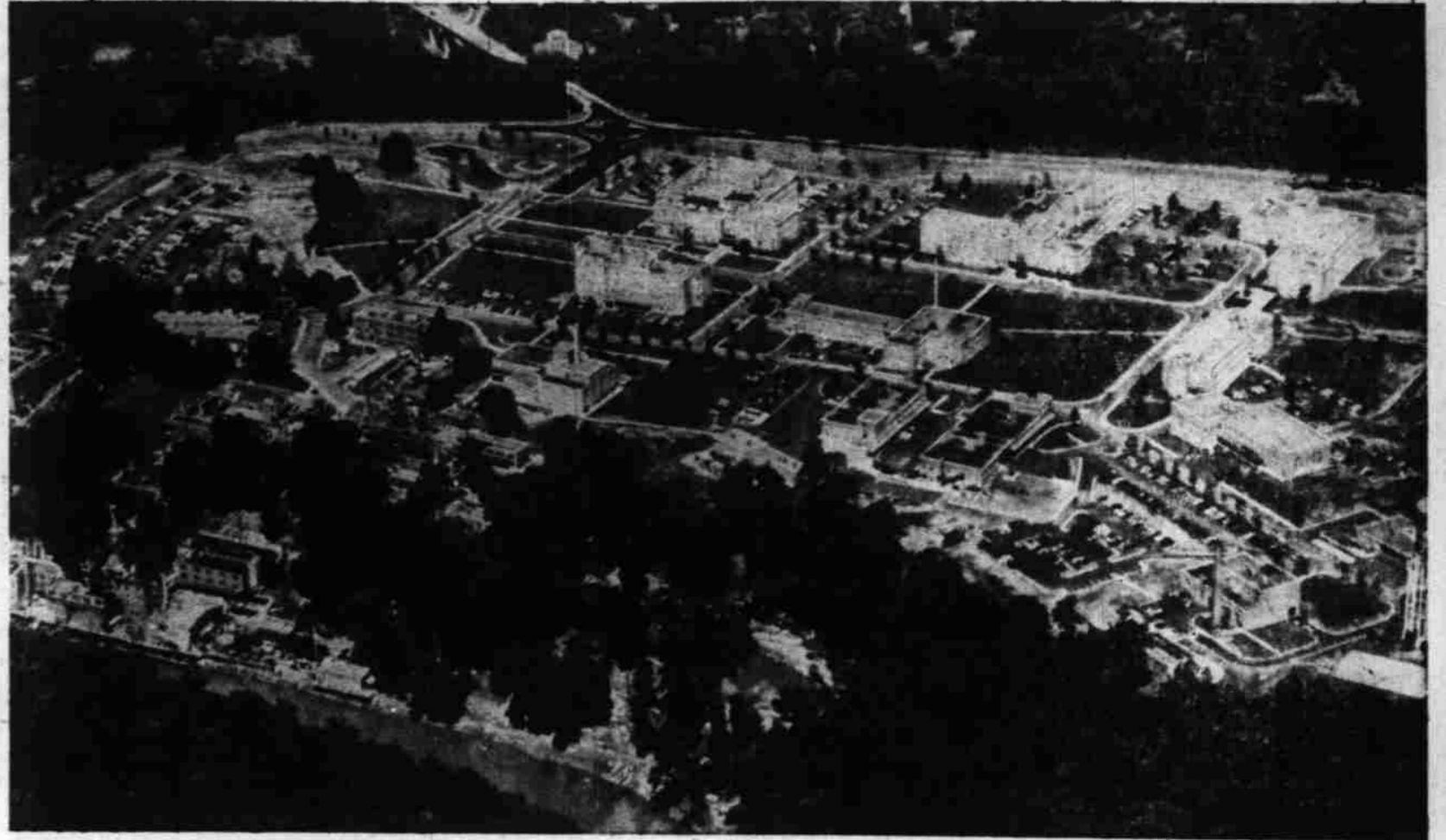
The historic Zwaanendaal Museum at Lewes, Delaware, commemorates the settlement made by the Dutch 324 years ago—in 1631. It is a major tourist attraction.



Legislative Hall at Dover, state capital, was built in 1932 as Delaware's statehouse. (Photos by Delaware State Development Department).



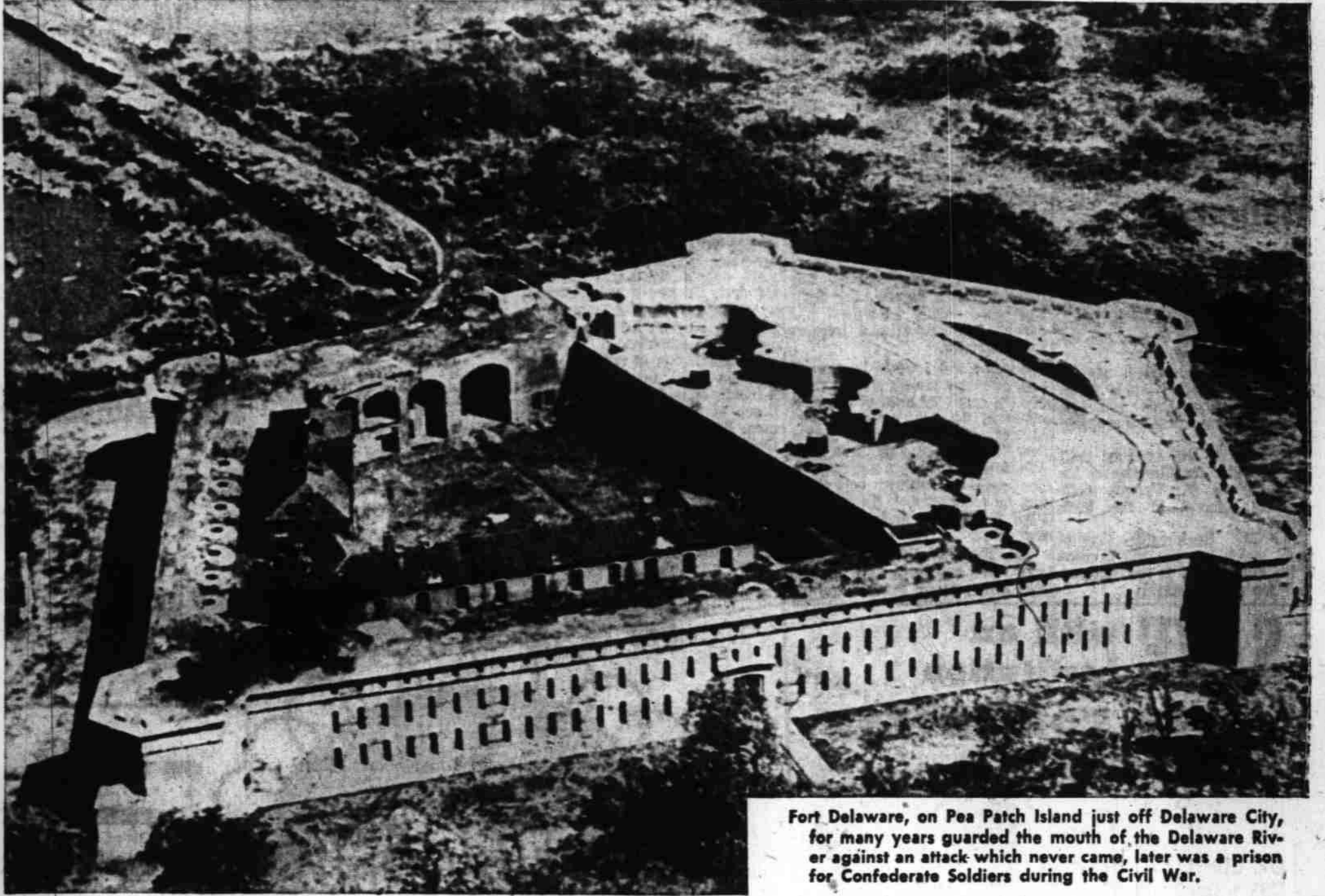
Wilmington is Delaware's largest city. Aerial photo shows the city's heart. It had a 1950 population of 110,356; Dover, the capital, 6,223.



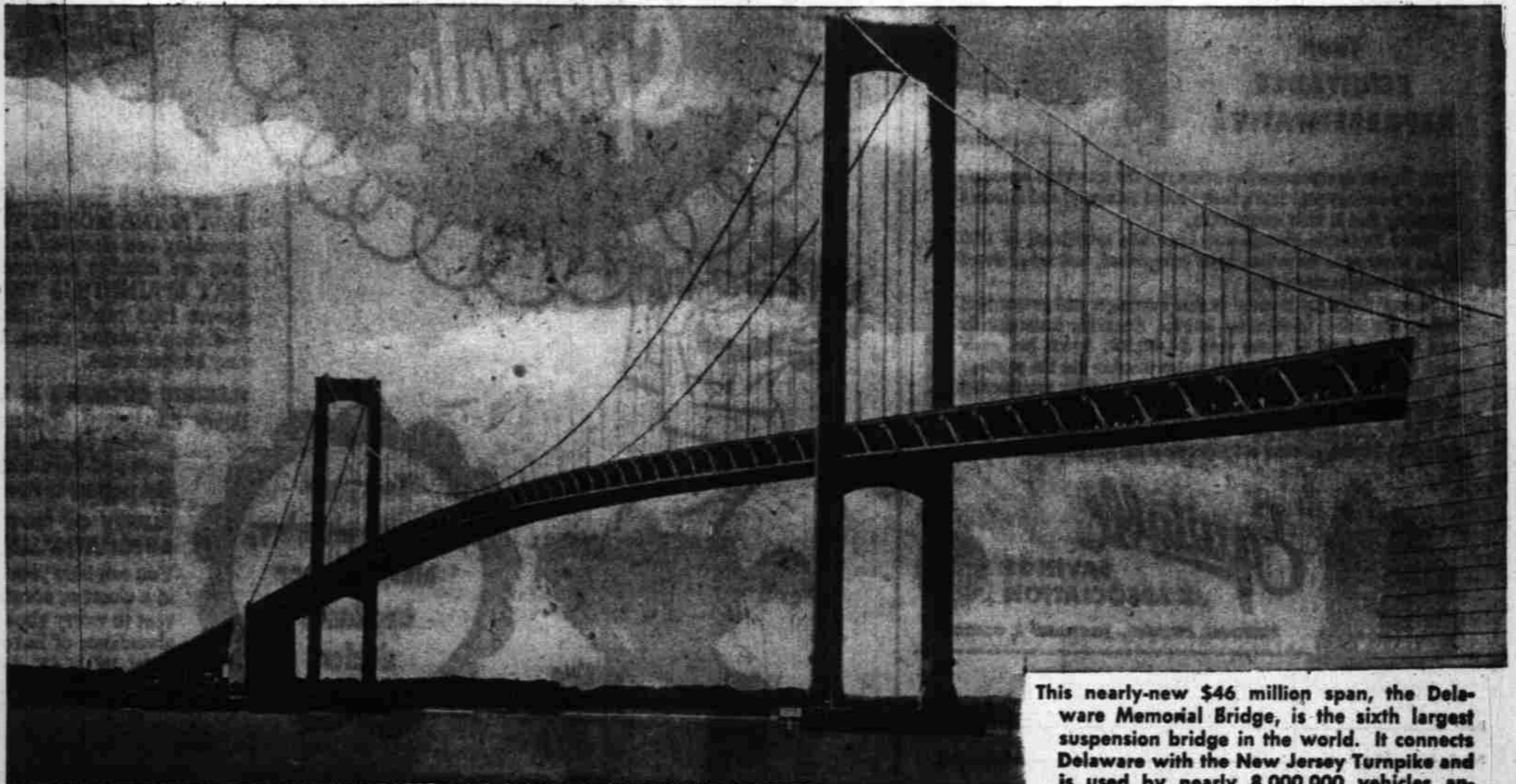
This aerial view is of the extensive duPont Experimental Stations at Wilmington, Delaware.

## Delaware

Population—318,085 (46th).  
 Area—2,057 square miles (47th).  
 Flower—Peach Blossom.  
 Nickname—Diamond State (because of its shape).  
 Capital—Dover.



Fort Delaware, on Pea Patch Island just off Delaware City, for many years guarded the mouth of the Delaware River against an attack which never came, later was a prison for Confederate Soldiers during the Civil War.



This nearly-new \$46 million span, the Delaware Memorial Bridge, is the sixth largest suspension bridge in the world. It connects Delaware with the New Jersey Turnpike and is used by nearly 8,000,000 vehicles annually.