

Matusow 'Lies' Upset Conviction of 2 Reds

NEW YORK (AP) — Turnabout witness Harvey Matusow's "propensity to lie" Friday upset the conviction and imprisonment of two of the nation's second string Communist leaders. Sentences of 11 others were allowed to stand. A new trial was ordered for the pair — Alexander Trachtenberg, 68-year-old Communist Party educator, and George Blake Charney, 47, Red trade union secretary for New York. Both are Russian-born.

BPA to Form Area Power Advisory Unit

EUGENE (AP) — The Northwest Public Power Assn. was told Friday that the Bonneville Power Administration plans to vitalize the Pacific Northwest Regional Advisory Council, which has been an important group in the area's development program.

B. L. Price, assistant Bonneville administrator, said organizations representing varied Northwest interests will be asked to nominate members to two-year terms on the council. In the past members were appointed by the Bonneville administrator.

The council will meet semi-annually to review the region's power and economic problems and to advise the administrator.

Price discussed the power outlook, saying needs of the Northwest for the next 10 years will require an investment of at least \$1 billion dollars for new dams, transmission facilities and projects now under way.

He urged that encouragement be given public and private agencies planning partnership or individual undertaking of power projects.

"Each and every kilowatt of generation developed by a preference agreement will result in that much less drain on federal power upon which many of you are depending to meet your future requirements," Price said.

"It is clearly in our mutual interest for every one of us to urge and cooperate with those agencies who have possible projects and financing ability to develop generation on their system."

Price said Administrator William Pearl now is in Washington to work for a 1956 fiscal year Bonneville budget of \$33,287,000. If Congress approves it, he said, it will insure a high level of construction to bring new federal power to load centers and increase operations and maintenance funds by \$500,000.

The association, before adjourning, passed a resolution reaffirming its support of a high federal dam at Hells Canyon on the Snake River. It re-elected Ora Bezley, Sand Point, Idaho, president, and selected Spokane for its 1956 meeting.

Helser Firm Trial Ends

SAN FRANCISCO (AP) — The trial of the J. Henry Helsel Co. of Portland, Ore., ended Friday with an informal decision from the bench that the company had violated the investment advisers law. But Federal Judge Louis E. Goodman said he would withhold action on any injunctive order to permit the company to demonstrate voluntary compliance in the future.

Fire Truck, Car Hit in Portland

PORTLAND (AP) — A fire truck and a private car collided at a North Portland intersection Friday, injuring fire Capt. Noel Lawrence. He was hospitalized with undetermined injuries.

The car driver, identified by Traffic Patrolman Bob Tardiff as Donald Lewis Hyde, 23, was arrested for disregarding a traffic signal and the fire siren.

DAILY CROSSWORD

ACROSS

- Comb, as wool
- Worry
- Sooty
- Measuring stick
- Estimate
- Fortify
- Dwell
- Endangered
- Man's nickname
- Moorish town
- Weird (var.)
- Fencing swords
- Vehicle
- Herb of aster family
- Part of "to be"
- A light javelin (var.)
- To pace again
- Cover
- Tilted
- Worship
- Conical tent (Am. Ind.)
- Aquatic birds
- Plant ovule
- Girl's name

DOWN

- Kind of wine
- Feminine of "alumnus"
- Large roofing slate
- Coloring agent

5. Cooked in fat

- Ladders in stockings
- Girl's name
- Painfully sensitive
- Lizard (Old World)
- Full of
- Free tree
- Incite
- Crown
- Serf
- Bitter vetch
- Unit of weight (gems)
- Assistants
- Performed

25. Rugged mountain crests

- To pipe again
- Esquimo houses
- Heaps of stones used
- Toward the lee
- White linen robe (Eccl.)
- Female deer

34. Toward the lee

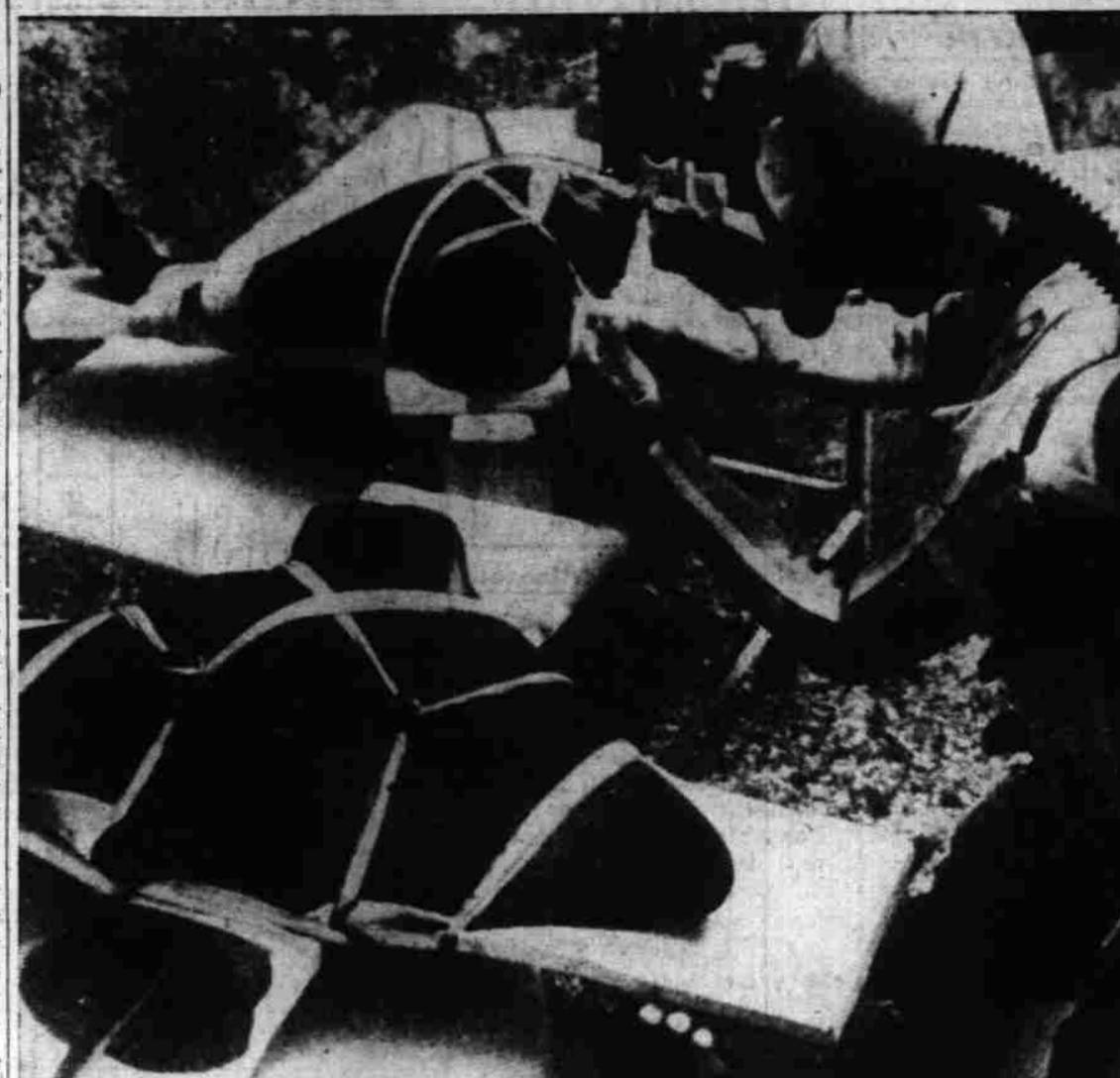
37. White linen robe (Eccl.)

38. Female deer

Yesterday's Answer

4-23

Underwater Eye Surgery on Bat Ray



PORTUGUESE BEND, Calif.—Operating under 22 feet of water, Dr. H. George Blasdel transplants the cornea from a donor bat ray, foreground, into the eye of Charlie, a blind pet bat ray at Marineland of the Pacific aquarium here. The donor bat ray was once captured at sea, and the gift of its cornea cost it its life. Dr. Blasdel worked with a face mask and oxygen tanks. Photographer Paul Calvert of the Los Angeles Times made this picture with an underwater camera. (AP Wirephoto)

Today Final Day for Home, Garden Show

Today is the final day for the Salem Lion's Club Home and Garden Show at the State Fairgrounds.

Friday night's crowd of 5,100 showed total attendance so far to be 6,385.

Doors will open at 1 p. m. today and remain open as long as the crowd demands. In addition to the many exhibits the show boasts a professional variety show which will be staged at 3 p. m. and again at 9 p. m.

Awards will be made at 2:30 and 4 p. m. Saturday night a \$25 merchandise band at 8 p. m. and a \$50 one at 9 p. m. will be given.

Winners of the \$25 merchandise bands Friday night were Mrs. Karl Thelen, 2405 Laurel Ave., and Eugene Oliver, 1193 N. 38th St. A tile plate went to A. G. Larson, 866 N. 16th St., and to Delbert Hunter, 500 Hunter St., Dallas. Two winners of a model tractor and moving van were Kathy Ankeny, 645 S. 25th St., and Joe Gray, Rt. 4 Box 4, Salem.

Investigators Heading for Copter Crash

ROSSLAND, B. C. (AP) — RCMP investigators from Edmonton Friday night were trekking toward the scattered wreckage of a helicopter in which three men died Thursday, 20 miles west of here.

The two-mile trail to the scene on the side of a mountain was covered with snow.

A ground party which reached the area earlier Friday said the twin-rotored Piasecki copter sheared through tree tops as it plunged into the mountain in a thick fog.

There was still no word whether the bodies of the three victims had been removed from the wreckage.

Killed in the accident were Flight Officer D. E. West, pilot, formerly of Edmonton; Cpl. J. E. Erickson; and R. B. Chesney of the Piasecki Helicopter Co., Philadelphia. The airmen were stationed at Vancouver.

Two other airmen survived. They are Flight Officer K. C. Kynas, copilot, and Cpl. J. S. Stradecki, both of Vancouver. The injured men were reported in good condition in hospital here.

At Eldorado, on Beaverlodge Lake in northern Saskatchewan, a main shaft descends 1,300 feet into one of Canada's largest uranium deposits.

Polio Vaccine 'Soon Available' To Millions, Official Declares

By FRANK E. CAREY
Associated Press Science Reporter
WASHINGTON (AP) — Welfare Secretary Hobby said Friday night "There now remain only months before the great boon of the Salk (polio) vaccine can be made available to many millions."

Newport Assault Trail Recedes

NEWPORT, Ore. (AP) — The assault with intent to kill trial of Richard Thomson was recessed Friday until Monday.

Thomson is accused of striking his former partner, James Meuler, with a pipe and then sending him in a car over an oceanic cliff Sept. 12, 1953.

Meuler was seriously injured but recovered.

This is the second time Thomson has been tried on the charge. He was convicted the first time but released from prison when the State Supreme Court ordered a retrial.

Cave-in Kills Man, Hurts 2

SPOKANE (AP) — Firemen, policemen and fellow workers dug desperately Friday to free three men buried alive in a sewer ditch, but one of the cave-in victims died on the way to the hospital.

The victim was a new man on the job, Ernest W. Nelson, 37, who was completely covered with clay and sand. Nelson was revived by oxygen and talked to rescuers while being dug out, but lapsed into unconsciousness and died in an ambulance.

Andrew Seher, 37, threw back his head when the rain-weakened excavation gave way and his nose was still exposed when rescuers started freeing him. He was revived with a resuscitator and later reported out of danger at a hospital.

George Porter, a heavy equipment man who had jumped into the ditch just before it caved to help lay sewer pipe, was buried to the waist. Porter told rescuers to free the other men before digging him out. He apparently was not injured and remained on the job.

Action Started for Dam, Lock Shift to Yamhill County

WASHINGTON (AP) — Rep. Norblad (R-Ore) has introduced a bill to clear the way for Yamhill County, Oregon, to acquire an abandoned lock and dam at Lafayette, near McMinnville.

The federal government several months ago discontinued maintenance of the site after traffic through the locks virtually stopped.

The bill would start action to have the lock, dam and surrounding acreage declared surplus to government needs. That would enable the county to buy the property, a favorite picnic and swimming spot. Farmers also use the reservoir for irrigation water.

Police Locate Missing Boy

A search for a missing 11-year-old Salem boy ended Friday when the lad showed up after spending all of Thursday night in a downtown hotel, police reported.

Officers said Merlyn Langley was returned to his mother, Mrs. Bernice Moore, 2657 Portland Rd., after the manager of the hotel provided word about the boy.

The boy had reportedly been missing since leaving for school Wednesday morning. Officers said it was not known why he spent the night in the hotel.

Driver Cited On 2 Charges

Frederick B. Hiller, Newberg was booked on two charges Thursday after a car was seen failing to observe a stop sign, said city police.

Police said the man was cited for failure to obey an officer after orders to report to headquarters were ignored. He first was cited for driving through the stop sign. Hiller posted bail on both counts.

Portland Produce

PORTLAND (AP) — Butterfat—Tentative, subject to immediate change—Premium quality, delivered in Portland 58-61 lb; first quality 56-58; second quality 54-57.

Wholesale Dressed Meats

Beef carcasses—Steers, choice, 500-700 lbs, 38.00-41.00; good, 35.00-38.00; commercial, 32.00-35.00; utility, 29.00-32.00; commercial cows, canners-cutters, 24.00-26.00.

Portland Grain

PORTLAND (AP) — Coarse grains, 15-day shipment, bulk, coast delivery: Oats No. 2-38 lb white 54.00; Barley No. 2-45 lb B.W. 53.00; Corn No. 2-E.Y. shipment 68.50.

Grain Prices Little Changed

CHICAGO (AP) — Wheat futures were slightly lower most of the time on the Board of Trade Friday but there were enough bullish influences to push prices upward near the finish.

Only the May wheat contract showed a gain at the close but other contracts were only a shade lower. Soybeans lost more than wheat, but also rallied near the finish.

Wheat closed $\frac{1}{4}$ lower to $\frac{3}{8}$ higher, corn $\frac{1}{8}$ to $\frac{1}{4}$ lower, oats unchanged to $\frac{1}{2}$ down, rye 1 to 1 $\frac{1}{2}$ lower, soybeans rallied to 1 $\frac{1}{4}$ down, and lard 7 cents a hundred pounds lower to 3 cents higher.

Continued dry weather in the wheat. The only precipitation predicted is for eastern areas of Oklahoma and Kansas, which don't need rain as much as the Western parts. The five-day forecast also indicates little moisture for the area.

Stocks and Bonds

April 22

STOCK AVERAGES			
Index	19	18	00
Indust.	135.2	135.2	135.2
D.I.	135.2	135.2	135.2
Net change	D1.5	D1.8	D2.1
Friday	222.1	135.2	72.1
Prev. day	223.6	137.0	72.4
Week ago	217.8	127.1	71.3
Year ago	162.8	85.2	61.9
Month ago	217.8	127.1	71.3

Investment Trusts

(Zilka, Smith & Co., Inc.)

BID ASKED			
Trust	10	10	10
Affiliated Fund	6.05	6.55	
Canadian Fund	15.89	16.97	
Credit Shares Trust	23.83	27.52	
Chemical Fund	29.00	31.35	
Delaware Fund	21.67	23.83	
Divid. Invest. Fund	9.68	10.06	
Group Shares	2.49	2.73	
Eaton & H. Bal. Fund	20.45	21.86	
Gas Ind.	24.59	26.87	
Group Tobacco	16.58	14.40	
Incorp. Investors	4.00	4.60	
Key Cust. Funds:			
A-1	20.10	21.83	
B-1	11.68	12.73	
K-1	19.84	21.65	
S-2	12.26	13.38	
I	10.15	11.05	
Man. Bond Fund	8.45	9.28	
Mass. Invest. Trust	29.39	31.99	
Natl. Sec. Series:			
Income Series	6.22	6.80	
Stock Series	7.82	8.55	
Pref. Stock Series	9.38	10.25	
Specialty Series	4.71	5.21	
Tel.-Elec. Fund	11.45	12.43	
Value Line Inc. Fund	6.25	6.83	
Wellington Fund	25.69	28.00	

Salem Market Quotations

(As of late yesterday)

BUTTERFAT			
Premium	10	10	10
No. 1	58		
WHOLESALE			
Wholesale	66		
Retail	71		

Onion Futures

CHICAGO (AP) — Onions: Open High Low Close

Nov.	1.60	1.60	1.60
Jan.	1.82	1.82	1.82

Sales: Nov. 2; Jan. 2

Portland Livestock

PORTLAND (AP)—(USDA)—Cattle unweaned for week 2,450; market uneven; fed steers weak-50 lower, some commercial-low good steers off more; heifers steady with few early sales choice 50 higher; cows strong-50 higher, some cutters up more; bulls strong-50 higher; few high choice fed steers 24.25-50.00; other choice grades 23.00-75.00; commercial 18.00-20.00; few lots choice fed heifers 22.00 Monday; other good-choice 17.50-19.50; utility 12.00-16.00; canner and cutter cubs 9.50-11.50, few to 12.00; utility 12.50-14.50, commercial 15.00-16.50 and over; utility and commercial bulls 14.50-17.00; few heavy bulls 17.25-18.50; few good feeder steers 19.00-20.00; calves for week salable 25.00; market about steady on continued light receipts; good and choice vealers 23.00-28.00, odd head 29.00, utility and commercial 14.00-21.00, culls down to 9.00.

Portland Grain

PORTLAND (AP) — Coarse grains, 15-day shipment, bulk, coast delivery: Oats No. 2-38 lb white 54.00; Barley No. 2-45 lb B.W. 53.00; Corn No. 2-E.Y. shipment 68.50.

New York Stock Markets

BY THE ASSOCIATED PRESS	
Admiral Corporation	26 1/2
Allied Chemical	98 1/4
Allis Chalmers	76 1/4
Aluminum Co. America	111 1/4
American Airlines	27 1/2
American Motors	11 1/4
American Tel. & Tel.	180 3/4
American Tobacco	89 1/4
Anaconda Copper	60 1/4
Atchafalpa Steel	141 1/4
Bethlehem Steel	141 1/4
Boeing Airplane Co.	71 1/4
Borg Warner	46 1/4
Burrhus Adding Mach.	29 1/4
California Packing	37 1/4
Canadian Pacific	30 1/4
Caterpillar Tractor	98 1/4
Celanese Corporation	22 1/4
Chrysler Corporation	48 1/4
Cities Service	48 1/4
Consolidated Edison	49 1/4
Crown Zellerbach	70 1/4
Curtiss Wright	21 1/4
Jouglas Aircraft	76 1/4
du Pont de Nemours	181 1/4
Eastman Kodak	79 1/4
Scott Paper Co.	14 1/4
General Electric	51 1/4
General Foods	84 1/4
General Motors	38 1/4
Georgia Pac Plywood	32 1/4
Goodyear Tire	61 1/4
Homestake Mining Co.	12 1/4
International Harvester	38 1/4
International Paper	85 1/4
Johns Manville	86 1/4
Kaiser Aluminum	84 1/4
Kennecott Copper	108 1/4
Libby, McNeill	22 1/4
Lockheed Aircraft	50 1/4
Loew's Incorporated	19 1/4
Long Bell	31 1/4
Montgomery Ward	78 1/4
New York Central	42 1/4
Northern Pacific	75 1/4
Pacific American Fish	10 1/4
Pacific Gas & Electric	47 1/4
Pacific Tel. & Tel.	135 1/4
Pennsylvania R.R.	91 1/4
Pepsi Cola Co.	21 1/4
Philo Radio	39 1/4
Radio Corporation	43 1/4
Rayonier Incorp.	43 1/4
Rayonier Incorp. Pfd.	38 1/4
Republic Steel	39 1/4
Reynolds Metals	159 1/4
Richfield Oil	68 1/4
Safeway Stores Inc.	43 1/4
Sealed Air Corp.	62 1/4
Sears Roebuck & Co.	81 1/4
Soco-Vacuum Oil	54 1/4
Slubbery Pacific	59 1/4
Standard Oil Calif.	79 1/4
Standard Oil N.J.	116 1/4
Studebaker Packer	12 1/4
Sunshine Mining	11 1/4
Swift & Company	51 1/4
Transamerica Corp.	41 1/4
Twentieth Century Fox	27 1/4
Union Oil Company	53 1/4
Union Pacific	175 1/4
United Airlines	47 1/4
United Aircraft	74 1/4
United Corporation	32 1/4
United States Plywood	6 1/4
United States Steel	85 1/4
Warner Pictures	19 1/4
Western Union Tel.	103 1/4
Westinghouse Air Brake	27 1/4
Westinghouse Electric	75 1/4
Woolworth Company	49 1/4

Late Selling Flurry Drops Stock Market

NEW YORK (AP)—A selling flurry in the final hour of trading Friday sent the stock market down moderately.

It was the market's second straight fall after 11 consecutive advances.

Today's drop because of relatively light volume wasn't considered serious.

Prices were down around 3 points at the outside in key spots with the bulk of the worst loss between 1 and 2 points. Gains were small.

The last 30 minutes of trading witnessed a good recovery from the lows with trading back to a normal pace.

The Associated Press average of 60 stocks was down $\frac{1}{2}$ point to $\frac{1}{2}$ point. All three components were off—industrials $\frac{1}{2}$ point, rails $\frac{1}{2}$ point, and utilities 30 cents.

Volume amounted to 2,800,000 shares, compared with 2,810,000 traded Thursday when the market was slightly lower.

Salem Obituaries

Mrs. Harriet Susan Anderson
Late residence, 1285 N. Liberty, April 22. Survived by husband, John R. Anderson, Salem; daughter, Mrs. E. Adams, Salem; son, G. H. Anderson, Salem; half-brother, William Meginn, Bedford, Indiana; 4 grandchildren and 3 great-grandchildren. Services to be held Monday, April 23, at 2 p. m., in the Virgil T. Golden Chapel.

Harlan Clayton
At a local hospital April 20, at the age of 75 years. Brother of Lida Clayton of Millwaukie. Announcements of services later by the Howell-Edwards Chapel.

William A. Mathis
At residence, 2415 Maple Ave., Friday, April 22. Survived by wife, Pauline Mathis of Coos Bay; daughters, Mrs. Wilma Caffree, Coos Bay; Marie Mumper, Salem; brother, Edward A. Mathis, Salem; and 8 grandchildren. Announcement of services later by Clough-Barrick Co.

Mrs. Hazel Small
Late residence of 425 South 21st St. at a local hospital April 19. Survived by husband, Walter T. Small of Salem; daughter, Mrs. Janette Lutz of Ridley Park, Pa.; and 2 granddaughters. She was a member of Auxiliary of Salem Barracks No. 113, Veterans of World War I Services Museum, April 22, 1955. Burial in the Evergreen Chapel Interment Belcrest Memorial Park, Rev. Wayne Greene officiating.

Annual Statement for the year ending December 31, 1954, of the Metropolitan Life Insurance Company, 1 Madison Avenue, New York 10, in the State of New York, made to the Insurance Commissioner of the State of Oregon, pursuant to law:

ASSETS

Bonds, \$2,840,877.17.
Stocks, \$166,661,413.90.
Mortgage loans on real estate, \$2,652,971.74.
Real estate, \$483,200,824.83.
Policy loans and premium notes, \$552,035.47.
Cash and bank deposits, \$154,862,317.18.
Interest and other investment income due and accrued, \$109,371,088.00.
Other assets, \$5,720,018.77.
Total assets, \$13,091,375,827.88.

LIABILITIES, SURPLUS AND OTHER FUNDS

Reserves for fire and accident and health policies, \$11,026,976,324.00.
Policy and contract claims, \$61,838,825.54.
Liability for dividends to policyholders, \$238,249,113.56.
All other liabilities, \$983,811,213.00.
Total liabilities, \$11,800,375,477.10.
Capital paid-up, none.
Special surplus funds, \$118,544,000.00.
Unassigned surplus, \$661,835,851.70.
Surplus on contracts policyholders, \$780,499,831.70.
Total \$13,091,375,827.88.

SUMMARY OF OPERATIONS (Accrual Basis)

Premiums and annuity considerations, \$1,774,330,129.32.
Considerations for supplementary contracts, \$107,828,029.78.
Net investment income, \$393,064,784.72.
Other income items, \$802,786.71.
Total, \$2,276,947,729.54.
Total benefits, \$2,574,574.90.
Payments on supplementary contracts, dividend accumulations, and interest, \$91,962,217.81.
Increase in reserves, \$649,265,973.36.
Commissions, claim and general insurance expenses and taxes, \$337,385,376.02.
Other operating deductions, \$9,271,435.58.
Total, \$2,276,947,729.54.
Total gain from operations, \$76,952,163,427.13.
Total \$2,199,995,602.26.
Total gain from operations, \$76,952,163,427.13.
Dividends to stockholders, none.
Other items affecting surplus and surplus funds, \$11,845,149.87.
Total, \$11,845,149.87.
Increase in surplus and special surplus funds, \$65,107,472.41.

BUSINESS IN OREGON FOR THE YEAR

Gross premiums and annuity considerations collected during the year, \$68,929,296.33.
Dividends paid or credited to policyholders during the year, \$984,623.71.
Gross benefits and claims, endowments, surrenders and annuities paid during the year, \$3,702,024.81.
Principal office in Oregon, 522 Southwest Fifth Avenue, Portland 4, Oregon.

Classified Advertising

Stateman-Journal Newspapers
280 N. Church St.
PHONE 4-6811

(Per line, 1 line) *Weekdays *Sundays
per line, 1 line — 25 25
per line, 2 lines — 50 50
per line, 1 month — \$5.00 (incl. S.U.)

*Classified ads will be run in both papers to give advertisers the advantage of the tremendous pulling power of 35,600 combined circulations.

**When an ad is ordered three or six times and a Sunday issue is included, for example, Friday, Saturday, Sunday; the lower Sunday rates apply because only the Stateman publishes on Sunday.

Classified ads will start in the morning Oregon Stateman, conclude in the evening Capital Journal—but ads will be accepted for Sunday Stateman only.

The deadline for classified ads is 1:00 p.m. the day before publication. Emergency ads and small line ads received after 1:00 p.m. will be placed in the "Too Late for Morning" column for the following morning.

Ads for Monday papers must be in by 5 p.m. Saturday.

The Stateman-Journal Newspapers