

Wood Siding Still Choice of Home Builders

Chances are when you buy or build your new home that it will be covered with wood siding. Wood continues as the favorite material of Americans for finishing the exteriors of their homes, the National Lumber Manufacturers Association points out. And, according to the U. S. Forest Products Laboratory, there are many good reasons for this.

Wood is economical to buy and use. It fends off the attacks of both hot and cold climates, with little or no perceptible wear. It comes in variety of patterns and sizes to fit either traditional or modern styles of architecture. It has natural beauty and richness of color, or it can be painted any color that pleases the individual.

The three most popular types of siding are bevel, drop and vertical. Longer, wider

Since bevel and drop siding are applied horizontally, they tend to make a house look longer and wider. Vertical siding emphasizes the height lines. Both horizontal and vertical applications are frequently used together to dramatize different portions of the house.

Bungalow siding is a wider and thicker type of bevel siding. A typical size of bevel siding is 3/16 inch on the narrow edge, 7/16 inch on the butt edge and 5/4 or 7/4 inches wide. The bungalow type is up to 3/4 inch thick on the butt edge and up to 12 inches wide. At least 1 1/4 inches of overlap is recommended for boards 7/4 inches and wider.

Many Patterns Drop siding is available in many patterns, including shiplap joints and tongue-and-grooved center-matched joints. Rustic siding is a variant of drop siding. The usual thickness is 25/32 inch or 3/4 inch and the usual widths are 4, 6 or 8 inches. Vertical siding may be either square-edged boards, used with narrow strips called battens to cover the joints, or center-matched tongue-and-grooved boards.

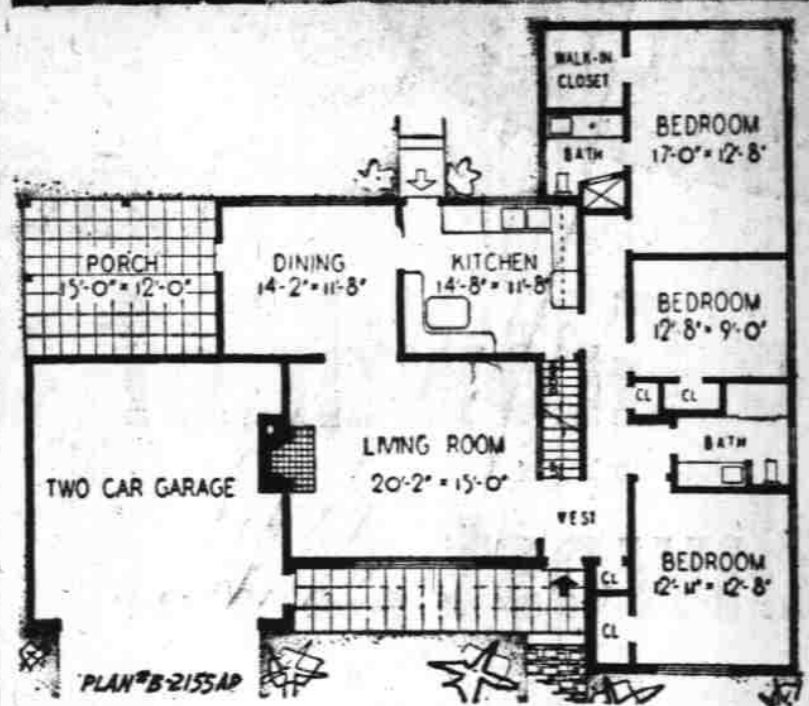
Shingles and shakes are used for siding in about the same way that they are applied as roofing. Shakes are machine-cut shingles with a scored face.

Wood siding contributes to the rigidity and stability of a house and will withstand severe shocks without shattering. Wood siding also contributes valuable insulation to a structure. For example, it is about 12 times more efficient per inch of thickness in preventing loss of heat than is stone or ordinary concrete.

Other properties that fit wood for long-time service as house siding are as follows: Temperature changes, that affect metal appreciably, have no perceptible effect on the size of wood. Likewise wood siding, if properly installed, can withstand any range of moisture change from long-continued high humidity to prolonged summer drought without shrinking or swelling enough to destroy its serviceability.

Seeds do not demand water when planted. In most areas seeds will get sufficient water from the spring showers to speed germination soon after they are planted. The general rule is: water in quantity for transplanted seedlings, but not seeds.

HOMES FOR AMERICANS



AP New Features
PERFECT circulation in a house—passage from one room to another without passing through another room—is one of the goals of smart architects. Here it is achieved to a high degree, including convenient passage to and from a two-car garage under porch roof. Two baths and space for expansion in the attic are among other features of this plan B-2155AP by Alwin Cassens Jr., architect, 145 So. Franklin Ave., Valley Stream, N.Y. The house covers 1,633 square feet, without garage, and has 38,542 cubic feet.

Panel Doors Help Enrich the Appearance of Newer Homes

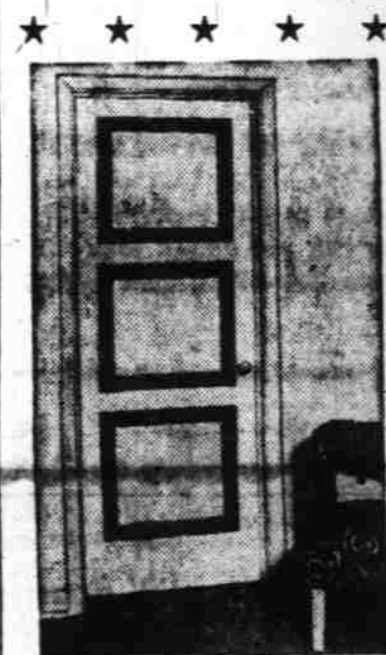
Doors play an important part in interior design, and panel doors of considerable variety are being used widely in contemporary architecture to harmonize with modern interior styling.

For the most part, the new ponderosa pine panel doors feature equal-sized panels in symmetrical arrangement, in keeping with the clean-lined dimensions of modern furnishings.

Attractive three-dimensional patterns are formed by subtle shadow lines created by the panels. These doors range from those with three square panels of equal size to those with squares numbering up to eight.

The warmth of wood can do much for a room finished in natural materials. A room with stone floor, or paneled walls is enriched by panel doors finished in one of the many colored stains now available.

Panel Doors—New styles in ponderosa pine harmonize with contemporary interiors. This door's three square panels are brightly-framed for a three dimensional effect.



What to Look For in Rugs And Carpeting

The great variety of new carpets and rugs, while wonderful, can be confusing! When it comes to buying a carpet or rug, there are a few simple hints that should make your selection easier.

Pre-planning... take a look at neighbor's homes, model rooms in stores, carpet displays and study home furnishings and decorating magazines.

Study the room for which you are buying the new floor covering. A carpet or rug may represent a big share of your budget and you want it to last far longer than draperies or upholstery fabrics.

LIKEABLE COLOR
Choose a color that you really like and one that complements the room. Don't compromise with a neutral go-with-everything color that may grow tiresome.

Bear in mind the kind of wear that the floor covering will receive. Heavy traffic rooms should have the best carpeting.

Remember these three factors that indicate the quality of a carpet: density and quality of pile, resilience and weight.

Broadloom is not a particular weave or quality of carpet. Broadloom means that the carpet has been woven on a loom that is six feet or wider, making it possible to have room-size carpets or rugs without a seam.

Select a reliable dealer... one who stands back of the merchandise he sells and correctly states its quality. A reputable firm cannot afford to misrepresent its stock. Be sure before you buy!

CUSHION FLOOR COVERING FOR BETTER LOOKS, WEAR

For a more luxurious appearance, softer tread, and longer service, use a rug cushion. From a beauty and comfort standpoint, a rug or carpet cushion makes your floor covering richer to the eyes, and more pleasing to the step. That is true whether the carpet or rug is the least expensive or the highest priced in the market.

Padding under your carpet and rugs also reduces noises and clatter of heels and adds long years of service in lasting loveliness to your soft floor covering.

CARPET HALLS, STAIRS

Carpeted halls and stairways are practical as well as beautiful. They add to the peace and quiet of your home by absorbing the sound of footsteps. They add to the safety of your home, too, by preventing tumbles, and cushioning a fall if it should occur.

TURN RUGS AROUND
Turn your room-size rugs around once or twice a year. This will add extra years to their life by distributing the wear over the entire surface, thus avoiding lanes at doorways, near the television and in front of sofas. Or, place a small rug on top of basic carpet in heavy wear areas.

Wisterias which fail to flower should be root-pruned during the summer. They are so rank in growth that it is wise to keep them in bounds by top-pruning throughout the summer season.



Proper painting maintenance now will save many dollars in repairs later on. Three "musts" for a good paint job are (1) proper surface preparation, (2) quality paint and (3) proper painting application. Carefully consider these points when protecting your home with paint.

DELIGHTFUL EXTRA... 12x16 Family Room

- 3 Bedrooms
- 1070 Sq. Ft.
- Hdwd. Floors
- Tile Bath
- Attach. Garage
- Birch Cabinets

all for only **10,500** on your lot

NEW FLOOR PLANS Designed For You By John Groom, A.I.A.

100% G.I. and Best FHA Terms
See Our Display at the HOME SHOW

Glenn Hamilton 2160 STATE STREET SALEM, OREGON
Phone 4-7844 • 3-6062 • 2-1509
* professional home builder

We Will Now Build In . . .
Independence Silverton Dallas Monmouth Stayton Albany

WE WILL BUILD F.H.A. or 100% G.I. In the following towns...

Lockwood Homes Are Guaranteed! Garage and Fireplace at a Small Additional Cost.

- Salem
- Dallas
- Monmouth
- Silverton
- Stayton
- Independence
- Woodburn

On Your Choice of Qualified Lot

See Lockwood Home at... 4285 Liberty Road

8 New Exteriors
20-25 Year Mortgages

Famous LOCKWOOD Construction

- Pre-Planned
- Solid Construction
- Completely Modern
- Built to Last and Last

FAMOUS LOCKWOOD HOMES (Broker)
Sales Office: 3727 So. Commercial

Kitchen: Women just love this roomy kitchen with natural Birch cabinets. Spacious drainboards, exhaust fan in ceiling.

Bedrooms: The three large bedrooms include large walk-in wardrobe closets.

Utility Room: Large heated utility room, plumbed and wired for all appliances.

Something Special.....

Salem Firms
Cooperating in Construction

(MATERIALS THAT MAKE A HOUSE A HOME)

Spacemaster Folding Doors . . .
Patio Door . . . Aluminum Window Frames . . . Masonry Lath & Plaster Supplies

Pumilite Block & Supply
1690 Dallas Rd. Ph. 2-2445

D. E. Cooper & Son
Heating, Installation, Cleaning, Repairs, Parts, Advice, Inspection, Estimates.
540 Hood St. Ph. 3-3603

Oregon Pulp & Paper Co.
Exclusive Mahogany Cabinets & Trim
Front & Ferry Ph. 2-2421

Stanley Fagg
General Cement Contractor. 20 Years Experience Residential & Commercial Work. All Work Guaranteed.
Rt. 6, Box 685 Ph. 4-1903 for Estimates

DeWeese & Co.
QUALITY — SERVICE PERFORMANCE
1174 Mill St. Ph. 2-1506

W. J. Nowland
The Best in Brick & Stone Masonry.
3365 Argyle Ph. 3-4678

In the New "SUNNYSLOPE ACRES" Addition

NEW-DISTINCTIVE-MODERN

Constructed for solid comfort to last for years and years to come. Yes, for something really special see this delightful home, notice the unique construction, how it is planned for the minimum of upkeep and the maximum of futuristic living.

- BRICK EXTERIOR
- SOLID OAK FLOOR
- EXCLUSIVE PATIO
- Mahogany Cabinets
- 2 Deluxe Fireplaces
- GLASS FRENCH DOORS
- BATH AND A HALF
- DOUBLE GARAGE
- Mahogany Trim Throughout
- Perimeter Hot Air Heat

3 BEDROOMS

\$14,750 FULL PRICE
\$750 Down G.I.
\$1,750 Down FHA

Buy Now and Choose Your Colors!

OPEN
Daily Starting FRIDAY Afternoon
175 Cunningham Lane

Proceed out LIBERTY RD., (Cunningham is first street past Browning Ave.) turn right on Cunningham, the first house on the right.

FREE First 10 Sales Will Receive a New 1955 CHEVROLET 2-DOOR SEDAN With the Down Payment Already Made (\$1500 Contract Bal.) Other models and accessories can be arranged at Douglas McKay Chevrolet Co.

Infra-Red built-in Electric Range by Sigitz

REPUBLIC STEEL Kitchens

AUCTION

AT THE **LIONS HOME SHOW** APRIL 21-22-23
OREGON STATE FAIRGROUNDS

HEIDER'S BOOTH

YES... EVERY ITEM IN OUR LARGE BOOTH AT THE HOME SHOW WILL BE SOLD TO THE HIGHEST BIDDER!

- ★ ADMIRAL RANGES, REFRIGERATORS
 - ★ R.C.A. ESTATE RANGES
 - ★ AMANA FREEZERS
 - ★ R.C.A. VICTOR TELEVISION SETS
 - ★ ADMIRAL TELEVISION SETS
 - ★ WURLITZER ORGAN
 - ★ YOUNGSTOWN SINKS and CABINETS
- Yes... Even Easy Terms on Your Bid Price!

HEIDER'S BOOTH AT THE LIONS HOME SHOW

D.E. "Del" Johnson, Builder

"QUALITY MAKES THE HOME" Since 1940 Homes of the Future