

Select Lamps To Give Light

By VIVIAN BROWN
(P) Newsfeatures Writer

The home decorator often is stymied when it comes to choosing a lamp. She is all set when it comes to rugs, draperies, paint colors, wall papers, blinds, sofas and chests. But when it comes to that all-important room accessory, the lamp, she hesitates to make a decision.

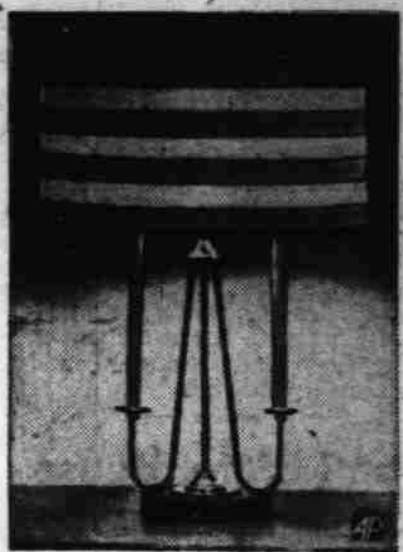
There are helpful pointers to make shopping for a lamp simpler. Here are some:

1. Before you buy a lamp, analyze the spot you have in mind for it. Is it to be placed on a low table? If so, choose a tall design. If intended for a high table, select a shorter lamp. The bottom of the shade should be about eye level when a person is seated next to it. If the lamp is too tall, glare will hit the eye from below the shade. If it is too short, light will be confined to a small area.
2. Light-scaled furniture needs lamps with slender contours or open, airy shapes. Massive pieces can take the bulkier lamps.
3. The average-size living room requires about five lamps.

These should not match, but should go well together. Do not choose a variety of odd shapes, patterns and colors creating a confused effect.

4. Some lamps are selected for purely decorative effects, such as to grace a buffet, cabinet or console table. These may provide dramatic accents and provide illumination by shedding light in an area that might otherwise be drab. Illumination experts suggest that light should be distributed evenly around a room so that seating units may be properly equipped for reading, writing and sewing. Any home where there is a scramble for a favorite chair "to read" usually is improperly illuminated. Reading lamps should have fairly broad shades, with light-colored lining, and should be moved close to chair or sofa in line with the shoulder.

5. If you are choosing lamps to tie together traditional and modern furnishings, select classic lamp forms which are usually good mixers. These include urns, vases and columns, all of which may form a perfect unity in almost any setting. Many contemporary lamps are de-



CONTEMPORARY lamp is at home with traditional or modern furnishings.

signed to fit perfectly with modern, traditional or a mixture of both.

6. The trend to Italian and French furniture has made lamps in motifs of those heritages easy to find. Good choices are metal lamps reminiscent of old French toile units, or models derived from French oil lamps in china, porcelain or glass. These are available in authentic reproductions or streamlined interpretations. Lamps of dainty Venetian glass, sparkling faceted crystal and colorful, imported pottery go beautifully with Italian motifs.

7. Early American furniture is increasingly popular and modern forms of Colonial candle holders, among other motifs, such as pitchers and

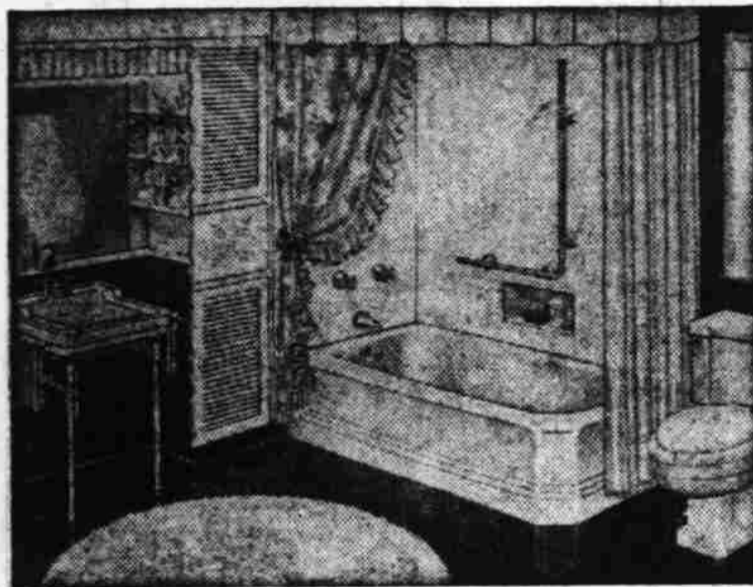


TRADITIONAL column lamp adds an oriental touch to sleek modern furnishings.

roosters may be teamed effectively with 18th Century furnishings. More conventional for this period are pine, maple, and milk glass, sometimes trimmed with glass oil founts and ebniz shades. There are modern interpretations of the old whaling lamps also.

8. If light is required in a corner where there is no room for an end table, or where a table surface serves other purposes, lighting experts suggest a floor or wall lamp. New floor lamps are more lightly proportioned than their bulky predecessors and have the added advantage of being easily portable so that they may be moved from one area to another in a jiffy.

Face-Lift Bath With New Accessories



Decorative panels make a pretty frame for fixtures and also conceal handy storage space. The fixtures shown are made in white and colors.



Father and son are mighty pleased with their new wall covering. This is a new type of pre-finished, sturdy hardboard—in 16" squares—that can be installed easily on wall or ceiling because of its light weight, and can be applied with a rubber-base adhesive that eliminates use of nails or metal moldings.

To many Salem area homeowners, the bathroom seems to be the most difficult room in the home to modernize.

Built-in fixtures make it far more difficult to smarten-up this room at moderate cost because modernization too often entails completely new installations.

When the bathroom is old and in need of a face-lift—here are some ideas for renovation without basic structural changes.

Tiled in bath areas—glass shower enclosures—new linoleum or tile floors—cabinet construction round the wash basin—hand-some, new medicine chests—are all tricks that spell rejuvenation for the bathroom.

New bathtubs, while mostly standardized, may be had in the newer square shape. Many homeowners find that such installations often increase floor space, and fit better into older bath rooms.

Most home-owners now want overhead showers in their bathtubs, says American Builder magazine. The reason: Water has to be piped to tub anyway, so why not have a shower too?

The publication explains that recent developments in shower equipment include: glass panels for tub enclosures, glass doors for cabinet showers, new types of shower heads, adjustable shower arms and new mixing valves for greater safety.

One of the popular members of the shower family is the pre-fabricated metal shower cabinet. Cabinet showers are available in a variety of sizes.

They are shipped knocked down for economy of transportation and ease of installation. They are leak-proof and durable. The latest types of receptors for shower cabinets are stain-proof and non-slip.

American Builder says the design of modern bathtubs also reflects the constant striving of the plumbing fixture industry for good appearance, safety and high durability.

New Furniture Joins Beauty, Functionalism

Emphasis on design and an increased trend toward transitional styling are the keynotes of this year's furniture. Transitional—that happy integration of modern with Early American, gives a softened but uncluttered refinement to newest furniture fashions.

Despite the new interest in transitional, the demand for traditional remains constant. New enthusiasm is provoked for the combination of traditional beauty with up-to-date comfort such as the union of Duncan Phyfe and stain-resistant plastic or Queen Anne wing-backs and foam rubber.

STYLE . . . Television continues to force innovation in the furniture field! Hassocks are more essential than ever before, but have a new, accepted drawing-room appearance. Swivel rockers play an important part in TV viewing comfort. Snack and tray tables now reach a handsome maturity!

Upholstered pieces are large, with an eye to extra seating space in front of the TV set, but the lines remain simple.

Rough textures are still the fabric favorite and chenille is growing in popularity. Trims are almost non-existent.

COLOR . . . a clover-pink, called by many names, has made its appearance in every room in the house. It combines well with brown, black or turquoise. Blue in all its pastels, Persian and aqua forms is a close running mate.

The neutral tones, however, are still the steady anchor men in the color games and they include the beiges, greens and black and white combinations.

BEDROOM FURNITURE . . . is large, handsome and efficient. Breakfronts are more beautiful and spacious than ever and even headboards of beds are providing storage space as well as book and shelf space. Brass trim is very prominent.

Pink, in all shades, is very evident in bedroom furniture. Two-tones are finding an increased interest in black-and-white and brown-and-white combines.



This beautiful, cut and loop pile carpet has a hand-crafted effect. Soft pillows add comfort to a modern-styled bench.

Plant Your Roses Properly

Don't risk losing your rose plants because of improper planting.

Roses should be planted firmly. A large hole should be dug for each plant, leaving a conical hole in the earth at the bottom.

Spread roots in the cone and separate them so that they are evenly spaced.

Topsoil is then filled in until the hole is half-full. The depth of the crown should be then adjusted while the soil is soft until the thickened portion of the main stem is at least one inch below soil level.

Recreation directors and handicraft teachers recommend the use of splinter-free, smooth surfaced bottoms for woven baskets. Frequently used is hardboard, one-eighth inch thick, into which holes may be drilled for the reeds. The moisture-resistant and non-splitting nature of the material is an added advantage.

Choose Quality In Your Plants

It pays to buy the best when buying trees and shrubs. Do not compromise with quality, urges the American Association of Nurserymen, which has set up standards for various shrubs and trees. Plants are only as healthy as the expert propagation and care they have received.

Buy from an established nursery. There are different grades in nursery stock and it is important to know that you are getting quality because it is alive. A No. 1 rose is the best grade, for instance, and it has to have a certain number of strong canes.

Number "ones" are the pick of the crop and will produce full satisfaction with reasonable care—and require less maintenance. Quality plants are the best insurance for reaping the full benefits desired.

New Kitchens Put on 'Living Room' 'Airs

The "good old days" are coming back into the home by way of the kitchen. On the way out is the cold white little cubicle that looked more like a hospital clinic than a warm family center where a housewife could both cook and be at ease with her family and friends.

The "clinic" is being replaced by a friendly, colorful room which is an integral part of the living and entertaining area of the home.

The new "old-fashioned kitchen" can be small in area if the size of the house requires it, but it sacrifices nothing in efficiency or automatic appliances.

It is not cramped because often it is separated from the living and dining area only by a breakfast bar or row of waist-high floor cabinets. With such an arrangement, the interior of a

small house seems much larger, while conversation and a feeling of "at ease" flow naturally through rooms formerly walled off from one another.

Every feature in today's kitchen is designed to create an inviting atmosphere in the room to which the lady of the house devotes so much of her day.

Colorful, washable wallpaper and cool shades of paint are applied to walls and the ceiling. Painted or stained to match the

cabinets or walls are the sash and frames of large windows, that let in plenty of air and sunshine.

New cabinets utilize every inch of space, with adjustable shelves and lazy-susan corners, creating the "right" easy-to-reach spot for every article of Mrs. Homemaker's kitchen equipment.

Be prepared for the good weather with repainted lawn furniture.

New Kind of Power Lawn Mower

Combines BEST Features of BOTH Reel Type and Rotary Type Mowers



MOWS SWEEPS TRIMS EDGES MULCHES CUTS WEEDS

Why be half-satisfied? Buy the one mower that can do a complete job!

MCCULLOCH POWER LAWN MOWER

SAFETY. Tiny concealed blades pivot out of the way when they strike a solid object.

SMOOTH, WIDE CUT. This mower leaves no wheel marks . . . cut is 20" wide.

CUTS ANY HEIGHT. Cuts tall grass and weeds to height you select, from 1/2 to 2 inches.

TRIMS OVER EDGES. Cuts over edges without digging. Cuts on either side right up to walk. Won't scalp the lawn. PICKS UP OR MULCHES. Vacuum action throws clippings into catcher.

New McCulloch Twin-Action Power Lawn Mower

Here's the mower for you. See it today.

"See a demonstration of this new wonderful power mower before you buy."
BUDGET PAYMENT PLAN
High trade-in value for your old mower.
VALLEY FARM STORE
3095 Silverton Rd.—Open Sun. 9 to 4 p.m.

Home Owners Show Preference For Showers in Their Bathtubs

Most home-owners now want overhead showers in their bathtubs, says American Builder magazine. The reason: Water has to be piped to tub anyway, so why not have a shower too?

The publication explains that recent developments in shower equipment include: glass panels for tub enclosures, glass doors for cabinet showers, new types of shower heads, adjustable shower arms and new mixing valves for greater safety.

One of the popular members of the shower family is the pre-

fabricated metal shower cabinet. Cabinet showers are available in a variety of sizes.

They are shipped knocked down for economy of transportation and ease of installation. They are leak-proof and durable. The latest types of receptors for shower cabinets are stain-proof and non-slip.

American Builder says the design of modern bathtubs also reflects the constant striving of the plumbing fixture industry for good appearance, safety and high durability.

\$700.00 DOWN

\$70 Per Month

3 Bedroom Homes on 45th St. Out State St. All Different—Unusual—Distinctive.

Owner Builder PHONE 3-6468

andberg HEATING

SEE OUR DISPLAY

at the **LIONS CLUB HOME SHOW**

THURS. FRI. SAT.



by **DAY HEATING CO.**

225 Division, Salem

Phone 3-4822

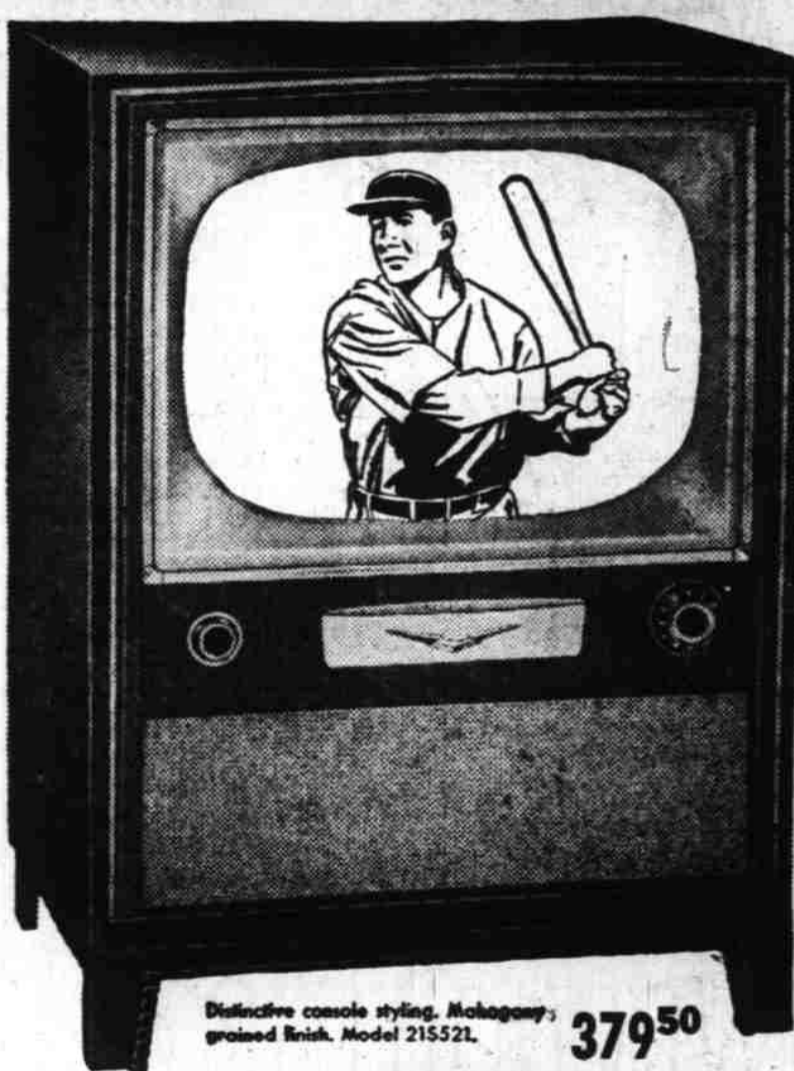
YOU WON'T BELIEVE IT UNTIL YOU SEE IT YOURSELF!

FANTASTIC TRADE-IN ALLOWANCE

on THIS new 21" **RCA VICTOR "521" CONSOLE**

No set too old . . . No screen too small . . . and No Double Talk!

Now's the time to get the 21-inch console you've always wanted! Right now, we'll take your old TV—even if it doesn't play—and give you a sensational allowance toward the purchase of the magnificent new RCA Victor "521." This full-fledged console has RCA Victor's famous Overseas "All-Clear" picture tube with 212% greater contrast to bring you the sharpest, brightest television ever. And, there's the thrilling "Golden Throat" Fidelity Sound for the clearest tone in television. So, bring in the old . . . bring out the new. Do it now! This unusual trade-in deal lasts a limited time only.



Distinctive console styling, Mahogany-grained finish, Model 215521. **379.50**

EASY CREDIT TERMS! BUY NOW! PAY LATER!

FOR VIEW—New High-Speed VHS Transistor-Beam tubes from previous continuous tubes. Exclusive "Clock Action" for instant, accurate switch to and from VHS. Gate-off circuit in your area, UHF and VHF.

Ask about the exclusive RCA Victor Factory Service Contract.

NOW . . . NIGHT SERVICE TILL 9 P. M.

FOR SALES . . . SERVICE AND INSTALLATION OF TV CALL "THE MEN FROM MARRS" AT

MARR RADIO & TELEVISION

2140 S. Commercial St.

OPEN FRIDAY NIGHT 'TIL 9

Phone 3-9201

