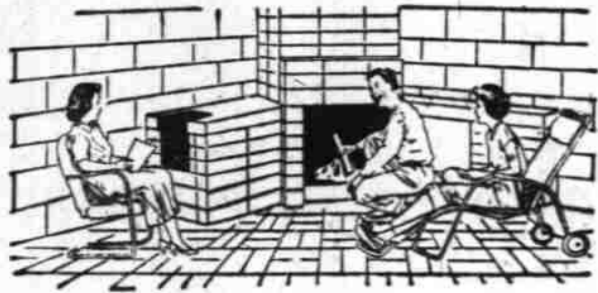


Build Outdoor Living Room, Enjoy Summer

Think of an outdoor living room as a neat attractive area outdoors where you can relax in comfort with family or friends amidst lovely color combinations of plants and flowers.

The outdoor room may be anywhere from 8 by 10 feet in size up to a large-sized area for entertaining large groups. Size is not particularly important.

In such a living room you will want cool lawn space, shade, and low flowering shrubs for beautiful surroundings. You may wish a barbecue at one end for preparing and serving tasty treats. Comfort-



able chairs complete the picture. Plan the whole area before you start. You will need an open center space, a walk, and plant borders to give a pleasant view wherever you happen to look. Do not locate your outdoor living room too far from the house. Place it where it will be handy.

Calculate the number of people usually entertained. Twelve feet square is large enough for eight or ten people. Many delightful hours of entertainment can be enjoyed in such an outdoor living room on hot summer evenings and balmy days.

Self-Starter Developed for Lawn Mowers

The first self-starting home power lawnmower ever produced was put on display recently.

The self-contained electric starter operates on the same principle as the starter on modern automobiles. The operator has only to press a button with the touch of the toe and the engine is started. This eliminates the starter pulling system now used on the engine of other power mowers.

The starting motor operates on 8 volts, 40 amperes, has frictionless bearings and heavy-duty windings. The 6 volts, 7-plate battery can produce more than 400 starts, the equivalent of two full seasons of use under normal operating conditions. The contact switch motivates a chain drive to an over-riding clutch mounted on the engine crankshaft. The clutch automatically disengages when the engine starts.

Property is Enriched by Landscaping

Just as construction materials are used in building a house, "plant" materials are used in building beautiful home grounds.

The basic plant materials are: (1) lawn grasses, (2) annual flowers, (3) perennial flowers, (4) roses, (5) ornamental shrubs (deciduous and evergreen), (6) fruit trees, (7) ground covers, and vines. Bulbs, of course, also are used.

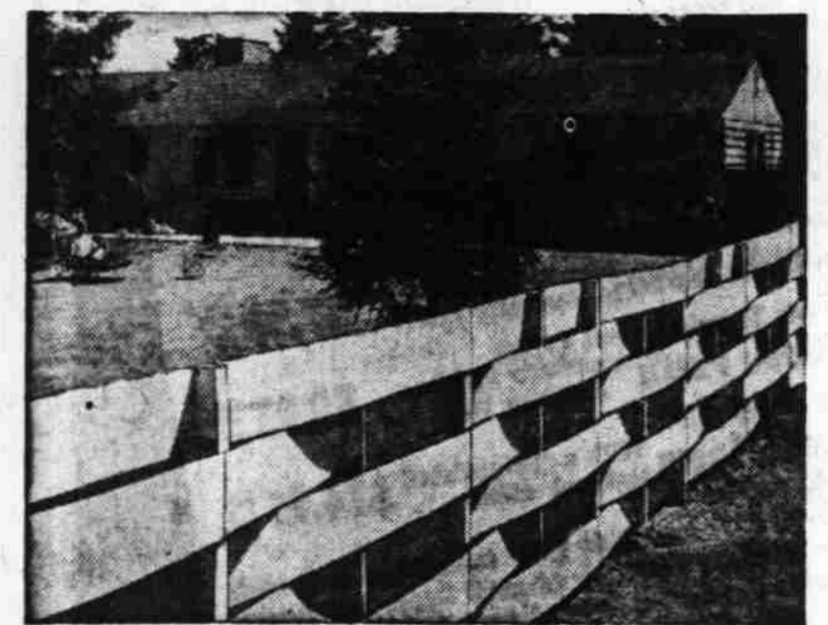
Combinations of these plant materials can make any barren or poorly-planted property a thing of great beauty, depending on the taste and utility with which they are planted.

Some of the attributes of every well-landscaped property, according to the American Association of Nurserymen, are:

1. Open lawn space. Both for "looks," as well as outdoor living, open lawn space is necessary. The lawn should not be all cut up with flower beds and shrubs. These should be placed at the borders of the lawn.
2. Flowering shrubs, including roses, may be used for various purposes, such as flowers to decorate the home, screening, privacy, hedges and other uses. By selection of various flowering shrub combinations can be used which will flower over a long period. Some should be evergreen, for winter color.
3. Trees are useful for shade, for landscape beauty, as accent features, as well as for flowers and fruit. They should be placed to the west of where the shade is needed. In the summer, the hottest part of the day is usually in the afternoon when the sun is in the western sky. The tree will therefore cast its shade to the east.
4. Ground covers are used on steep banks and in shady spots where grass will not grow well. Consult with your nurseryman.
5. Vines, when on arbors, may provide a beautiful shady nook, or may beautify and soften a home garage. On porches they provide coolness in summer. If they are of a variety that sheds its leaves, they will let in the sun in early spring and in the fall when you want more warmth.
6. Small fruits, like strawberries and raspberries, add nourishing home-fresh tidbits for the family table.

Study the combinations of plants for your own property, observe how other home owners have used these combinations for better living as well as beauty, and then do your own experimenting until you have the kind of home property you desire.

A redecorated living room will give your house a springtime look.



Easy to build is this handsome basket-weave fence which adds distinction to any yard it encloses. The textured fence pattern has been formed with wide strips of exterior fir plywood around 2x4 posts. Plans for this worthwhile do-it-yourself project can be obtained free by writing to the Douglas Fir Plywood Association, Tacoma 2, Wash.

Integrate Your Outdoor Areas With Wood Fencing Designs

Today, fences have many jobs to do. Not only do they serve to but serve also as an integral part of outdoor living.

Fences, in particular, those made of the many available fine woods may be designed for planting back-

New Curtainings Show Qualities Of Easy-Care

Gone are the days of curtain stretching, difficult washing, long hours of ironing—and, all the other time-consuming chores attendant to keeping curtains crisp and clean.

New miracle fibers make these a thing of the past. Fiber-glass, nylon and dacron used in glass-curtain or ruffled styles offer the fresh sparkle of cotton or rayons—yet with none of the old laundering or spillage problems.

Dacron is either hand or machine washable and promises to be even more sun-resistant and color-fast than nylon.

A whisk job with a warm iron usually gives these new fabrics the "finished" look.

STYLINGS IN CURTAINS

One of the most popular vogues in window-dressing curtains — is the cafe curtain. In every fabric from dacron to crisp cottons, they add a smart look to every room.

Abstracts, solid colors, provincial prints, stripes and florals — all appear on cafe-styled hangings.

BAMBOO CURTAINS

An established favorite for many years as a drapery hanging, matchstick bamboo curtains now appear in shorter window curtain lengths.

In a myriad of colors, and screened or painted with gay patterns, bamboo is now a delicate window frosting.

And — you can clean bamboo with your vacuum cleaner attachment — or wipe it with a damp cloth for renewed freshness.

Spring is clean-up time.

to Heat

GLASSHEAT IS CLEAN

Install it NOW, before Spring Housecleaning . . . and SAVE! Call

RADIANT GLASSHEAT OF SALEM

1540 Fairgrounds Road — PHONE 4-6263

The Great White Way

to Heat

GLASSHEAT IS CLEAN

Install it NOW, before Spring Housecleaning . . . and SAVE! Call

RADIANT GLASSHEAT OF SALEM

1540 Fairgrounds Road — PHONE 4-6263

Cavalier gives you **CLEAN HEAT**

CAVALIER Automatic Wall Insert Heaters are 2" LOWER

EASIER TO INSTALL UNDER YOUR WINDOWS

• can be cleaned in 3 MINUTES OR LESS

UL APPROVED

Solve your home heating problem now — Come in and see the complete line of Cavalier Heaters!

APEX ELECTRIC and PLUMBING CO.

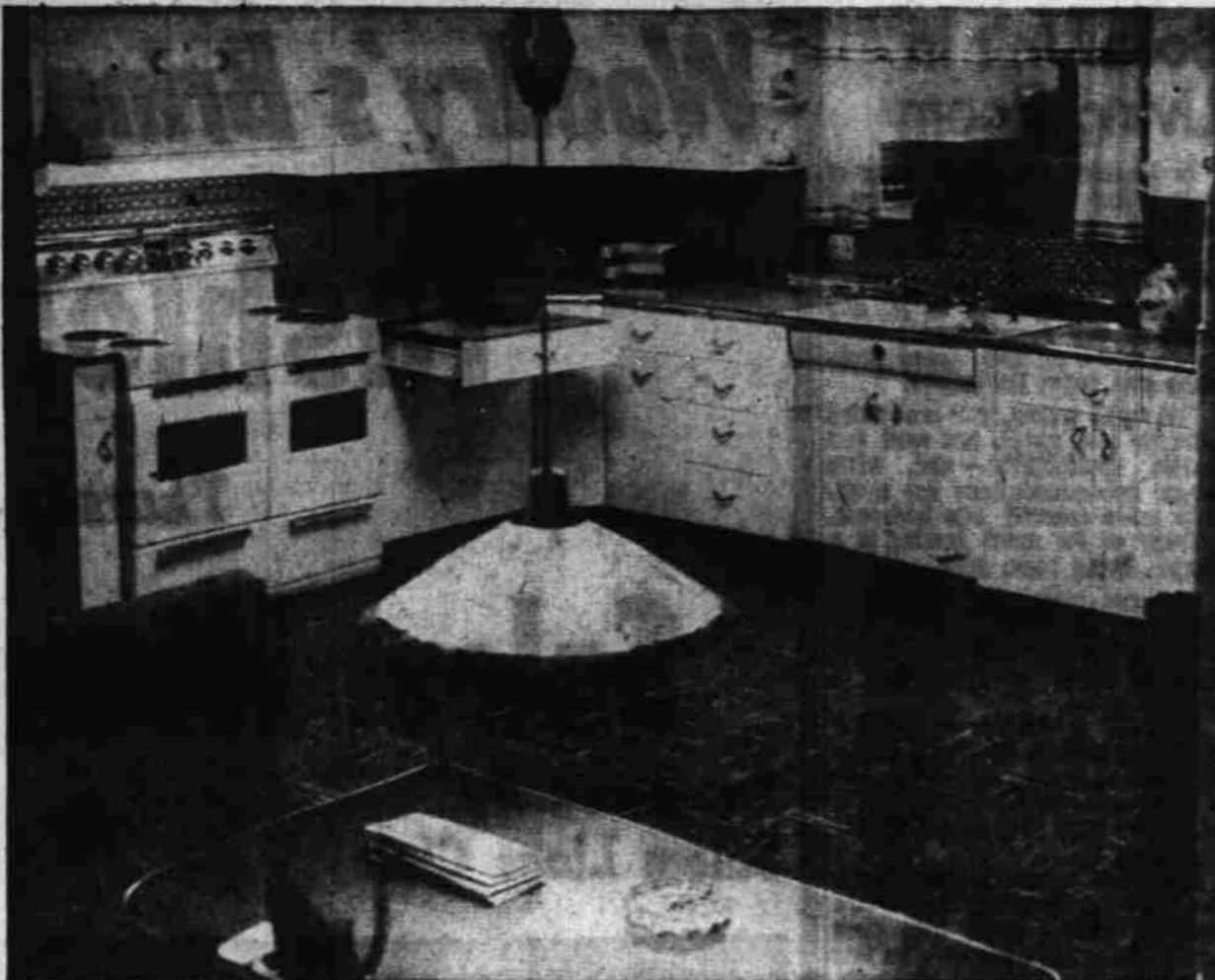
FORMERLY CHERRY CITY HEATING

Your Complete Headquarters for Electric and Plumbing Supplies

3405 Portland Road Phone 2-1866

Across From the Sun Shop

Kitchen Includes Pull-Down Light



Increased use of electrical appliances in the kitchen plus a tendency to make the kitchen more livable as well as a pleasant place to prepare food has brought about a roomier and more streamlined room. The model Salem kitchen shown above also features a new "pull-down" light over the breakfast nook.



Deluxe decorated kitchen ware is at home in every kitchen. This "Homestead" pattern shows provincial scenes in glowing colors. Cannisters, trays, cookie jars, bread boxes, waste paper baskets and stove mats, plus other useful items, are included.

Handy Hints for Home Painters

When painting interior walls, even up the ceiling line by painting a narrow strip around the top of the wall first by hand, then brush or roll-coat the rest of the wall. For broad wall surfaces, the roller method is faster and leaves no brush marks.

Never let a brush rest on its bristles in the paint can or soaking. A carpet tack on the handle will let it hang on the edge of the can. Special brush holders can be bought at your paint store.

Spring is clean-up time.

See it at the HOME SHOW!

RADIANT

Glassheat By Continental

The Ultimate in Modern Heating

- No Fire Hazard!
- No Noise!
- No Dirt or Odor!
- No Maintenance!
- Guaranteed for Five Full Years!
- The Only Electric Heat to Carry the Good Housekeeping Seal of Approval!

NO MONEY DOWN!

FHA Terms — 3 Full Years to Pay

BE SURE TO ASK ABOUT OUR HOME SHOW SPECIAL!

—Free Estimates Gladly!—

RADIANT

Glassheat OF SALEM

1540 Fairgrounds Rd. Phone 4-6263

Gardeners Given Example of Lazy Way to Grow Fruit

The growing of mouth-watering fresh fruits on the home property can be made easy, or difficult. The lazy gardener selects a few fruits that require the least amount of care for the returns received.

Here are a few tips:

Plant dwarf fruit trees that bear sooner and do not require the use of ladders to harvest the crop.

A strawberry barrel, or planting in tiers to form a cone or pyramid will eliminate much weeding, take up less space, where space may be at a premium.

While not a fruit, rhubarb can be grown and harvested year after year with little care except fertilization.

The bush and vine fruits, such as raspberries and grapes are satisfactory crops that require little effort. Fertilization, pruning, staking, and an occasional spraying are all that is needed.

Use of an all-purpose spray makes it unnecessary to spray separately for different insects and diseases, thus saving much time and effort.

See at the . . . Home & Garden Show



Tested and Approved by Tens of Thousands of Satisfied Owners Representing every state in the Union and many Foreign Countries.

The Tiller Shop

1198 S. Commercial

Phone 2-1009

Spinet Model HAMMOND ORGAN

An opportunity to See . . . Hear and Play the exciting Hammond Chord or the lovely Spinet Model Organs on display at the Salem Home Show.

For your enjoyment we are presenting an afternoon of spectacular organ music in the rotunda of the State Capitol building in conjunction with the Salem Cherry Festival featuring the following accomplished artists:

MARY BARTON
ED SYRING
ZORA RICE
ELOISE BINGEN-HEIMER

Stone PIANO COMPANY

1280 State St.

Lion's Home Show SPECIAL!

SUPER TRADE-IN ALLOWANCE

—PLUS—

HERE'S WHAT YOU GET

SPEED QUEEN "HEAVY DUTY" AUTOMATIC WASHER

16 PIECE CANNON TOWEL SET

WASH DAY MAID

YEAR'S SUPPLY OF TIDE

Has all these super quality features:

- Bowl Tub and Agitator Principle
- 3 Spray Rinses
- Agitated Overflow Rinse
- Sediment Ejector
- Fully Automatic
- Water Level Control
- Water Temperature Control
- Field Drive
- Spin Dry

ALL FOR ONLY . . . **\$279⁹⁵**

EASY TERMS

Recognized as America's Most Trouble-Free Washer!

HEIDER'S

NEW DOWNTOWN ADDRESS — 363 N. HIGH

Ph. 4-2271—32 Years in Salem!