

# Average Salem Home-Buyer Wants 6 Rooms, Ranch Style

Salem citizens, when buying a new home in 1955, prefer a ranch-type, six-room home, it was indicated recently by several Salem realtors.

Such homes usually cost between \$11,000 and \$15,000 and include three bedrooms, rather than two, as was popular two to three years ago. The trend is toward houses with a bath and "a half," the latter having a toilet and wash basin separate from the bathroom's and usually located at the opposite end of the home.

Family rooms, in addition to a living room, are gaining in popularity. When company arrives, the youngsters can be shuttled into the family room and TV, while guests are entertained in the living room.

Composition roofs, rather than cedar-shingled ones, are also popular, probably because they are less expensive, said realtors.

The preferred ranch-type home also includes a kitchen and nook with an inlaid linoleum floor. Favored in other rooms is oak flooring.

### Room for Two Cars

The home will occupy 1,250 to 1,350 square feet, minus the garage, which is attached to the house and has room for two cars. Though most buyers do not have two automobiles, said the realtors, such garages are desired because of added storage space available.

The tendency is to finish in plaster the inside of garages, "dressing it up," so that the interior is attractive when garage doors are left open.

Shake exterior on homes are preferred. They "hold" the paint better than does the "lap siding" type. The shake type is a solid slab of cedar, whereas the lap variety consists of several pieces of wood, which overlap one another.

Brickwork here and there to lend attractiveness to the home's facade is liked. Wood is still the preferred construction material.

**Few Detached Garages**  
Two- and three-story homes are definitely "on the way out," said realtors, as is the "detached" garage, one separated from the house.

Also a trend are windows placed 5 1/2 to six feet from the floor on the walls of bedrooms. They are smaller, too, than when they were located about three feet from the floor.

A forced air, oil system is the most popular heating plant and a fireplace is a "must" in all homes selling for \$10,000 and up. Shorter mantels than before are liked and hardwood cabinets of birch in the kitchen.

Frame construction is prevalent in nearly all of the homes.

Meanwhile, construction of new homes on the fringe areas of Salem appeared to be on the upswing during the first three months this year.

Particularly has this been noticeable in the south Salem area, just outside the city limits. Though no exact figures are available, contractors report business is brisk there and Marion County health sanitarians have been kept busy inspecting sewage disposal systems.

One sanitarian reported that he inspected nearly 200 homes built since the first of the year in the area. A realtor said that one reason for the "boom" there is that the area has its own water supply, making it easier for prospective buyers to obtain FHA loans.

The Salem Heights Water District serves the locale. During all of 1953 and 1954, 2,600 homes were built in that area.

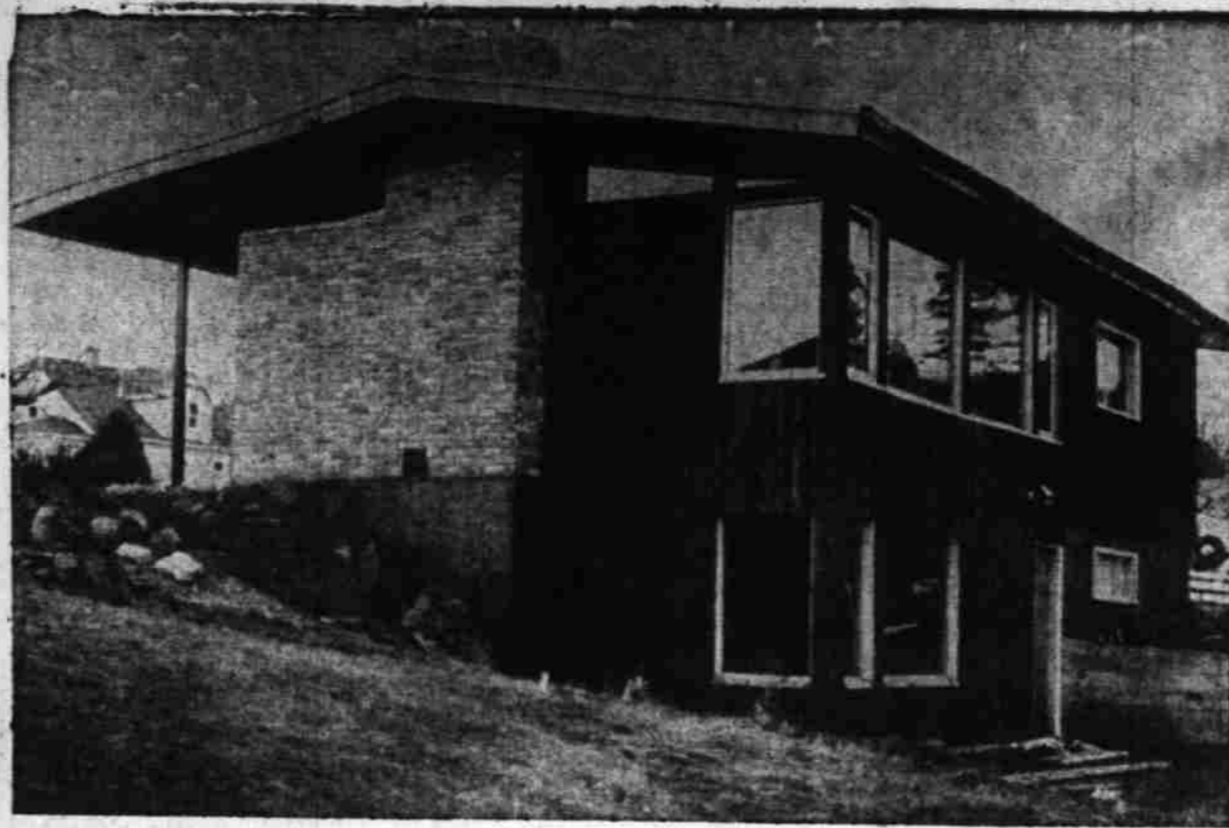
The office of city engineer Harold Davis reported that from Jan. 1 of this year until March 8, 40 building permits for single-family homes were issued in Salem. Total cost of the projects was estimated as \$443,950. Sixty-seven permits for dwellings were issued in 1954, 77 in 1953, from January through March.

Davis said January of this year with 24 permits, was the highest for that month since 1951. February, he said, was down somewhat with 19, as compared with the month's identical figure of 27 in 1953 and 1954.

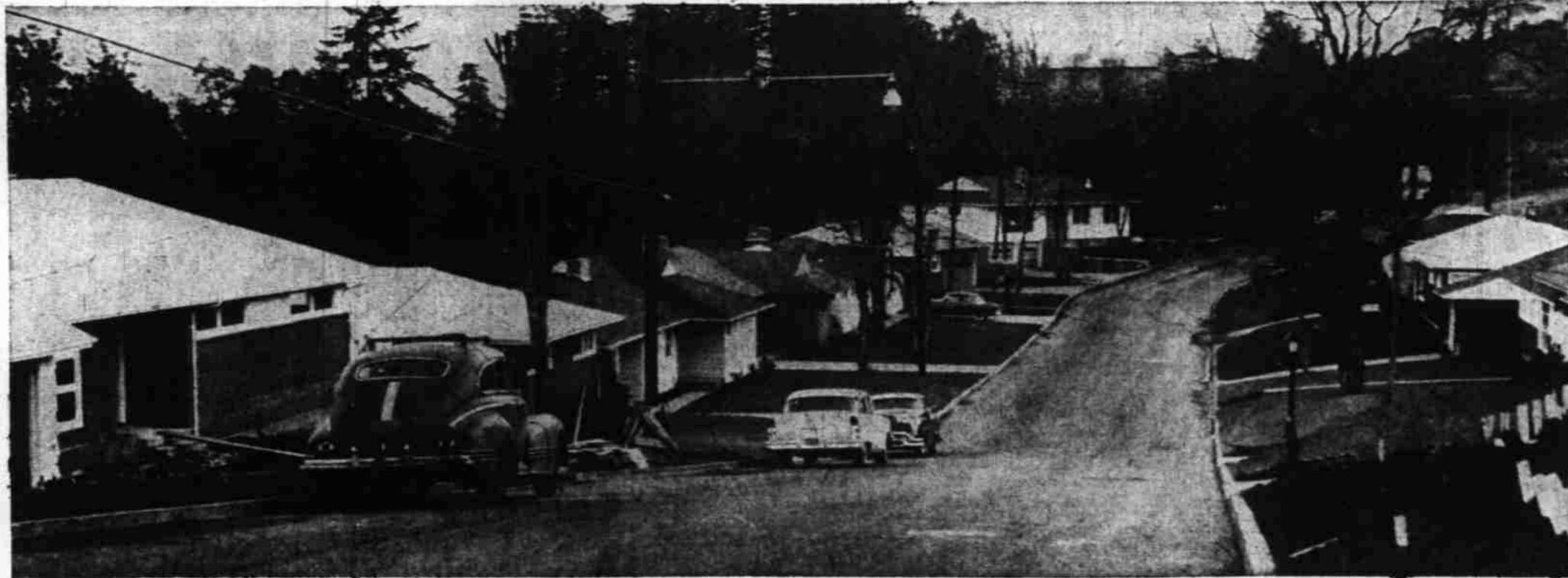
During all of 1953 and 1954, 2,600 homes were built in that area.

The office of city engineer Harold Davis reported that from Jan. 1 of this year until March 8, 40 building permits for single-family homes were issued in Salem. Total cost of the projects was estimated as \$443,950. Sixty-seven permits for dwellings were issued in 1954, 77 in 1953, from January through March.

Davis said January of this year with 24 permits, was the highest for that month since 1951. February, he said, was down somewhat with 19, as compared with the month's identical figure of 27 in 1953 and 1954.



A small home which doesn't look small, this one-bedroom home on Crestview Drive south of Salem has many features found only in larger, more expensive houses. A daylight basement gives much added area while taking full advantage of the sloping lot and view to the east.



New streets lined with new houses have become commonplace on the edges expanding south end of Salem. Many of the recent developments have provided Salem in nearly every direction. This street—Granada Way—is in the fast-paved streets and sidewalks.

## Longer Wear From Garden Hose Possible

Here are some tips to remember to give your garden hose a longer and more useful life.

Drain all the water out of the hose before putting it away. Coil the hose in three or four foot circles, tie in several places and then hang in a cool, dry place.

An old tire rim nailed to a garage or tool shed wall makes an ideal hose hanger. Just wind the hose around it.

To mend a leaky hose smear a thin layer of cement over the hole, then add a strip of friction tape to the spot and let it dry thoroughly. Repeat for two or three layers—this patch will resist usual water pressure.

You can make use of the good sections left in an old leaky hose. Cut into five foot or 10 foot lengths, eliminating the leaks. Join pieces together with metal "claw" connectors. Wrap tape around the end of the hose sections, place connectors, and snip and drive into the "red" ends with a hammer.

**DON'T** let your hose lie around in the hot sun... don't bend hose where it fastens to the faucet... don't allow the hose to twist or tangle too often.

### CLEAN CARPETS QUICKLY

To give your new carpets long wear and lasting beauty, be quick about cleaning any spots that may occur. Dried spots and stains are generally set, and cause difficulty in their removal. In removing spots, always the minimum amount of water, water and detergent, or if wools or man made fibers, a dry cleaning liquid for best results. Don't wet the carpet through, for a damp backing will cause mildew damage.

A redecorated living room will give your house a springtime look.

## Renew Outdoor Furniture Before Summer Begins

Early Spring is the time to check outdoor furniture for needed repairs and repainting. Folding chairs, lawn tables, sun chaises and gliders may need to be freshened up. Check the top, legs and braces and tighten bolts and screws wherever necessary.

Where paint is in bad condition, remove it and brighten the furniture with fresh paint. Unfinished metal furniture from which the old finish has been removed requires a metal primer and one or two finish coats.

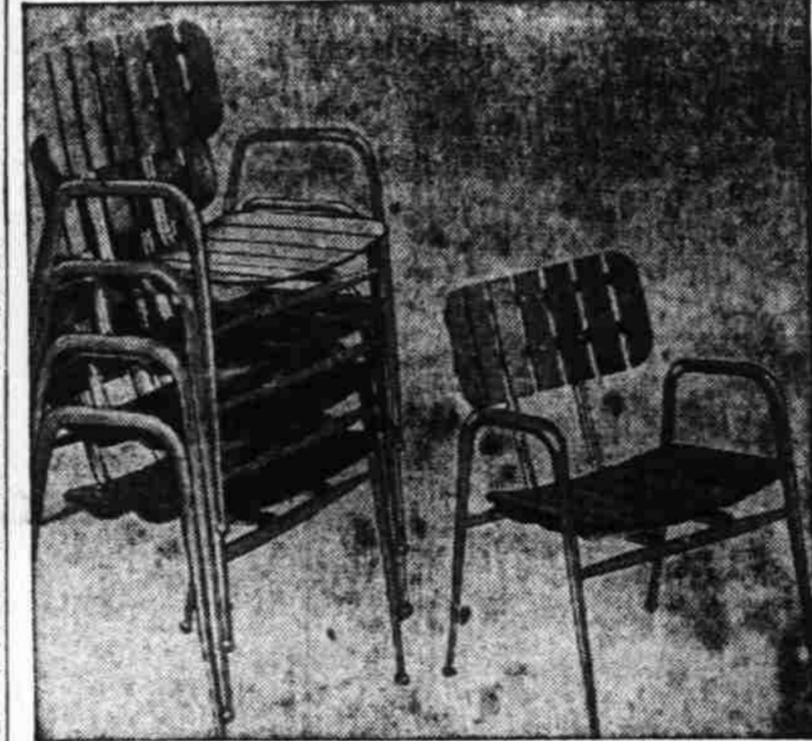
**Fine Sandpaper**  
For outdoor furniture of wood, after removing the old paint treat it with a water-repellent wood preservative. Allow sufficient time for the treatment to dry, then sand with fine sandpaper and apply the paint.

When painting outdoor furniture, select paint for weather resistance. Lean to bright, "summery" colors, allowing one central color to be your "theme."  
Unpainted, picnic-style furniture should be checked for knots and cracks. Fill cracks and deep scratches with plastic wood—and use plenty of it to allow for shrinkage while drying. The overfill can then be sanded down.

Coat patch spots and knots with aluminum paint for certain sealing, and sand surfaces with a medium sandpaper—with the

grain—until surfaces are perfectly smooth. Dust and clean well with a soft rag dipped in thinner. Allow wood to dry thoroughly before painting.

**Depends on Color**  
Painting procedure will depend on the color wanted and the wood involved. For redwood, use redwood sealer stain; for other woods, a heavy coat of good exterior enamel. Paint edges and undersides to protect against moisture. Use at least 2 coats of paint.



Combining thin redwood with gold-anodized aluminum, these chairs are stackable when not in use.

and allow ample time for drying between coats. Sand lightly between coats to provide "tooth" for the next coat. To make the surface completely watertight, finish with a thin coat of spar varnish. For metal furniture, rub the surfaces with steel wool, then wash thoroughly in soap and water. Apply a coat of metal primer first and allow 48 hours for drying. Then, use any good exterior enamel, following the same procedure described above for wood.

### OTHER WINDOW DRESS-UPS

In exotic solids or patterns—sheerest marquisette or dramatic bamboo, your windows will wear the dressed-up-for-Spring look, in the newest window stylings—from traverse types to cafe-curtainings.

Be prepared for the good weather with repainted lawn furniture.

## Built-In Units For Storage

Whether it's inside or outside, no modern family seems to have enough storage room about the house!

For the after-hours or weekend handyman—many home construction jobs can give these needed facilities.

**GARDEN ASSETS**—storage units for gardening and play equipment; build a carport and turn garage into den or workroom; patio furniture, and cabinets for barbecue accessories.

**INSIDE**—storage walls for bedroom, dining room or living room; wardrobe closets for bedroom or hallways; storage closets and cabinets for kitchen, bathroom or laundry room.

**SHORT-CUT FOR PAINTERS**  
"Do-It-Yourself" painters will find it convenient when painting small tables, chairs, etc. to turn the pieces upside down on a protected surface and paint the underneath parts first, painting from the leg ends downward. Next, turn the piece upright and finish the sides and other board surfaces.

## Waxing Tips for Various Woods

Add new beauty and protection to paneling or woodwork with a good coat of wax 24 hours after natural or stain finishes have been applied.

First buff the finished wood surface with 3/0 steel wool. Apply wax, preferably a good commercial paste wax. Spread smoothly and evenly over surface.

The result will be a true satiny finish, as well as added protection against scuffs, mars and scratches.

For subsequent waxings, stain waxes should be used. They will fill in scratches and scars and blend them with the rest of the wood. Give your paneling or woodwork that finished look now.

### MEND PLASTER BEFORE PAINTING

Before repainting or repapering your walls, mend cracked plaster with a prepared patching plaster mixture. Press the patching material firmly between laths and into crevices and allow to dry thoroughly before repainting.

Spring is clean-up time.

**CUSTOM MADE DRAPES**  
**By Burch** 1915 N. Commercial St. Phone 4-1609  
See the Display of the Latest Design in  
• FIBRE GLASS • POLISHED COTTONS  
• HAND PRINTS • BEDROOM ENSEMBLES  
• DECORATOR FABRICS & DESIGNS  
Lions Home Show—April 21-22-23 State Fairgrounds

**FREE!**  
A BEAUTIFUL DELUXE COOKING AND OUTDOOR THERMOMETER SET  
This \$6.50 value absolutely free to anyone calling for a free heating survey and installing any make central heating system this year.  
CHECK OUR DISPLAY AND FIND  
**BETTER HEATING—AT LESS COST**  
Life Magazine and Better Homes and Gardens give you the full story on how General Motors manufacturing methods now produces better heating equipment at much lower costs.  
**FREE ESTIMATES CALL TODAY 3-8555**  
Evenings—4-8790 4-1428  
**SALEM HEATING & SHEET METAL CO.**

## Use Lighting as Focal Points of Interior Decor

Once upon a time the primary purpose of home lighting was to see by! Today home lighting is "designed" to do much, more— it will dramatize furnishings, give a feeling of more a less space—and help bring the outdoors in.

Lighting should be planned room by room. Two arrangements are needed for each room—specific lighting for areas where the visual task is located, and general lighting throughout the room.

Specific lighting is achieved by use of portable lamps—general lighting by means of overhead, wall and cornice fixtures.

### NEW HARDWARE FINISH

One manufacturer has used brass pulls that have been copper-coated, then chrome-coated. He has then rubbed the chrome down so that the copper finish shows through. The result is dramatic and eye-catching.

Spring is clean-up time.

Exclusive in Salem at . . .

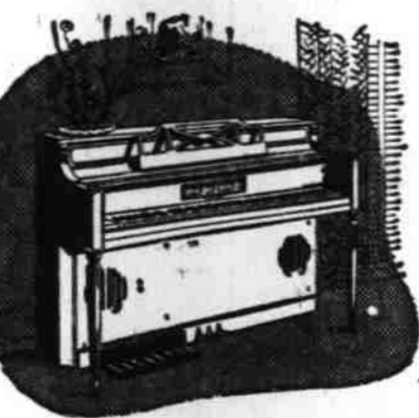
## THE MUSIC CENTER

the Beautiful

### Story & Clark

Piano, With Built-in

### LOWREY ORGANO



### IT'S TWO INSTRUMENTS ALL IN ONE

**PIANO ALONE** Played as a piano, the Story & Clark with built-in Organo is musically identical to the thousands of other fine pianos bearing the Story & Clark name.

**ORGAN ALONE** Played as an organ, literally thousands of two-manual musical combinations are available from the one, familiar piano keyboard! Now three new organ couplers give extra octaves. In the treble section alone, these couplers are equivalent to adding 30 more pipes!

**PIANO AND ORGAN TOGETHER** The built-in Organo permits your customer to play both piano and organ music, simultaneously—permits a wider variety of musical interpretation than any other single instrument in the world!

**UNIVERSAL APPEAL** Because of its unique features, the built-in Organo appeals to all types of people—families who need a piano for the children's lessons, for instance, where the parents would also like to make easy, satisfying organ music, with a minimum of serious effort. It is also ideal for churches, clubs, cocktail lounges and restaurants, etc.

**OUTSTANDING REPUTATION** The nationally-advertised Lowrey Organo is built by Central Commercial Industries—a 61-year-old pioneer in the field of electronics. You can depend on the Organo

**COMPACTNESS** Two glorious instruments in one beautiful case, requiring half the floor space of an individual piano and an individual organ. Never before has so much music been offered in such a small package, at such low cost!

**HI-FI EQUIPMENT** Now available—auxiliary Hi-Fi amplifiers, pre-amplifiers and satellite speakers which enable you to enjoy the same qualities as the most expensive organ installations. Also, the built-in Organo, permits the playing of old or new recordings with true hi-fidelity reproduction.

**ECONOMY** Because of the obvious economies of incorporating two instruments in one, the Story & Clark with built-in Organo retails for little more than a comparable organ, alone!

SEE IT... TRY IT... HEAR IT... AT...

## THE MUSIC CENTER

In the Capitol Shopping Center—Open Mon. & Fri. Until 9 P.M.

# GAS!

Why Sure . . .

36,000,000 Americans can't be wrong. Out of approximately 60,000,000 homes in the United States—36,000,000 are gas heated. Of every 5 ranges sold—3 are gas; of every 9 water heaters sold—8 are gas.

SEE OUR DISPLAY

At the

Salem Home Show

## DONKINS PROPANE GAS & APPLIANCES

3367 Portland Rd.

Ph. 3-5098

**KING-SIZE TRADE-IN**  
ON THIS NEW 1955  
**KING-SIZE NORGE**  
ONLY NORGE OFFERS THESE MODERN CONVENIENCES!  
**NORGE Refrigerator-Freezer, Model CS1280**  
REGULAR PRICE \$429<sup>95</sup>  
SPECIAL KING-SIZE TRADE-IN UP TO \$150<sup>00</sup> (LIMITED TIME ONLY)  
• Handidior, double-deep design. Holds dairy products, fruits, quart bottles, etc.  
• Big-family 12 cu. ft. size  
• Twin porcelain crispers with glass cover  
COME IN TODAY—OR PHONE  
**CHERRY CITY ELECTRIC**  
339 Chemeketa Open Fri. 'Til 9 P.M. Ph 26762