

Auto, Train Collide at 12th Street

The latest in a series of car-train collisions in Salem resulted Friday morning in extensive damage to the car involved, but city police reported no injuries. Officers said a vehicle driven by L. A. Walworth, Salem Route 1, Box 844, was struck by a slow-moving Southern Pacific train at the 12th and State street crossing. Walworth reportedly told police he had stopped at the intersection and started up again, but failed to see the train because of bright lights of another car. The car was going east on State street at the time of the 7 a.m. accident.

The train's engineer, Frank A. Waldorf, 1151 Lee St., told officers the train was travelling about 15 miles per hour at the time. The Walworth car received extensive damage to the right rear side.

Faulty Stove Pipe Given Blaze Blame

An overheated stove pipe Friday morning resulted in a fire that caused an estimated \$500 damage at the home of J. L. Reeves, 2266 Shelton St.

Firemen said an interior section of wall caught fire from the pipe, connected with an oil stove. The flames mushroomed from the interior of the wall, scorched the ceiling and damaged a rug and davenport.

Firemen were inclined to blame faulty construction for the fire, which occurred about 10:45 a.m.

Awards Given To Cub Scouts

Cub Scout pack 104 met at Garfield School Friday night and achievement awards of gold and silver arrows went to Hank Gale, Kenton Edwards, Vin Fichter, Ronnie Stein, James Kelley, Harvey Hall, Carlos Hooper, Jeff Hogansen, Rodney Crowley, Terry Jory, Stephen Paulson, Clark Walding and Tom Hunt-singer.

Hank Gale also received his wolf badge and Terry Bowles qualified to become a Boy Scout. A Christmas party for cub scouts and their families followed the meeting. Carols were sung and there were refreshments.

Science estimates the earth's atmosphere weighs 5,000,000,000,000,000 tons.

Eugene 'Hunts' 2 Teachers Santa's Team Honored By Educators

EUGENE — Two reindeer romped away Thursday morning from a supermarket where they were being shown as a Christmas season attraction. They sprinted down Highway 99 and L. A. McCormick, store manager, and an apron-clad clerk followed. The reindeer foresook the highway for a frosty pasture and a number of motorists pulled off to watch the chase.

The men finally came upon them about a mile away on a sawmill loading platform to which they had leaped. Henry Reeder, a Halsey farmer, walked up and grabbed the bridle of one of the reindeer. The other joined it and the reindeer—Comet and Cupid—were returned to their pen.

About 8 per cent of men and 1 per cent of women are color blind.

Three Rumbblings Reported in Area Around Newport

NEWPORT, Ore. — Three separate rumbblings, minutes apart, about midnight Thursday were reported by some residents of this coastal area. But investigation Friday failed to disclose what might have caused them.

Some thought they might have been dynamite blasts but state police and highway department sources said none apparently were set off nearby. No lightning was noticed, discounting the possibility they might have been thunder-claps. No jet planes were believed in the vicinity.

Records of the two teachers will be reviewed by a committee of staff members of the U. S. Office of Education along with those of nominees from other participating states. A list of the

Angell's Name Off Door at House Office

WASHINGTON — The name plate of Rep. Angell (R-Ore) was taken off a House Office Building door Friday after being there 16 years.

Ted and Lenore Hinckley, the husband-wife team who make up the congressman's Washington staff, closed his office to make way for workmen who will ready it for a new occupant.

Angell, who came to Congress Jan. 3, 1939, was defeated this year in a primary bid for reelection to his ninth term. He is now in Portland. Mrs. Edith Green, new Democratic congresswoman from Portland, is expected to open her office here after Christmas. The Hinckleys, who have been

'Public Nuisances' Facing Impoundment

BAKER — Dogs which roam unleashed between 8 p.m. and 6 a.m. here have been branded as "public nuisances" by the City Council. It ordered that they be picked up and impounded.

with Angell more than half his congressional tenure, said they will continue handling office mail until after the holidays.

They then will leave for Florida and, eventually, the Pacific Northwest. They formerly lived in Portland.

Dog Faithful to Wrong Person

PORTSMOUTH, Va. (AP)— Patrolman William M. Campbell is willing to believe that a dog is a man's best friend, even though the man be undeserving.

Campbell left his squad car to give chase to a man accused of disorderly conduct. He was gaining rapidly when the man turned into a driveway. Campbell followed and the dog jumped him. He was released from the hospital after being treated for three bites. The pursued man escaped.

disorderly conduct. He was gaining rapidly when the man turned into a driveway. Campbell followed and the dog jumped him. He was released from the hospital after being treated for three bites. The pursued man escaped.

CENTURY TV HAS SPARTAN AND GENERAL ELECTRIC TELEVISION SETS

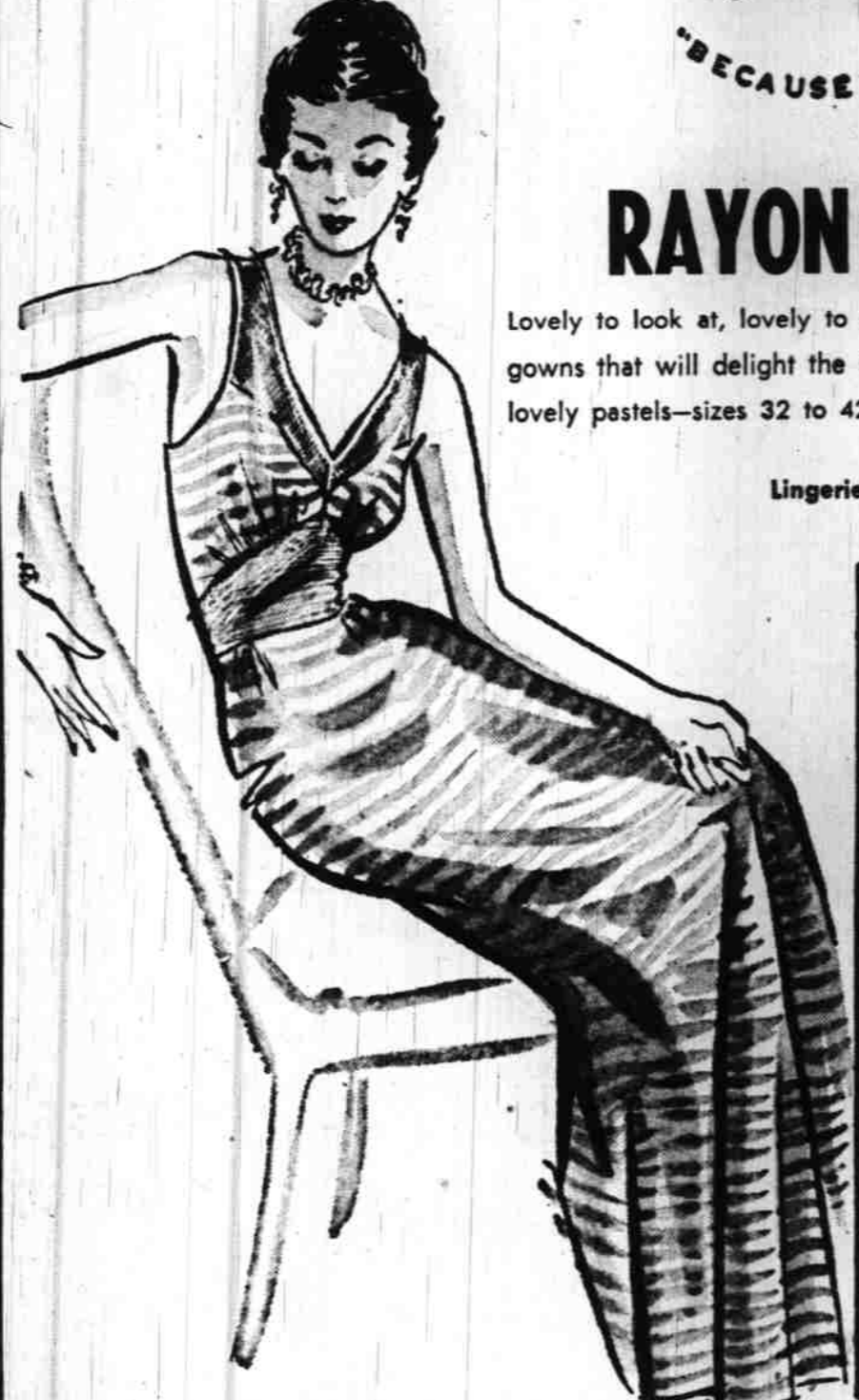
See Our Display of Small Appliances We Have Used TV Sets

Bonded Guaranteed TV and Radio Service

CENTURY RADIO and TV

1126 Edgewater Open 9 a.m. to 6 p.m. Ph. 4-5462

Gifts for her . . . Van Raalte



"BECAUSE YOU LOVE NICE THINGS"

SATIN STRIPE
RAYON TRICOT GOWNS

Lovely to look at, lovely to see—sheer, shimmering, satin stripe gowns that will delight the most discriminating! Colors are in lovely pastels—sizes 32 to 42. Larger sizes—3.50.

\$3

Lingerie — Main Floor



Van Raalte

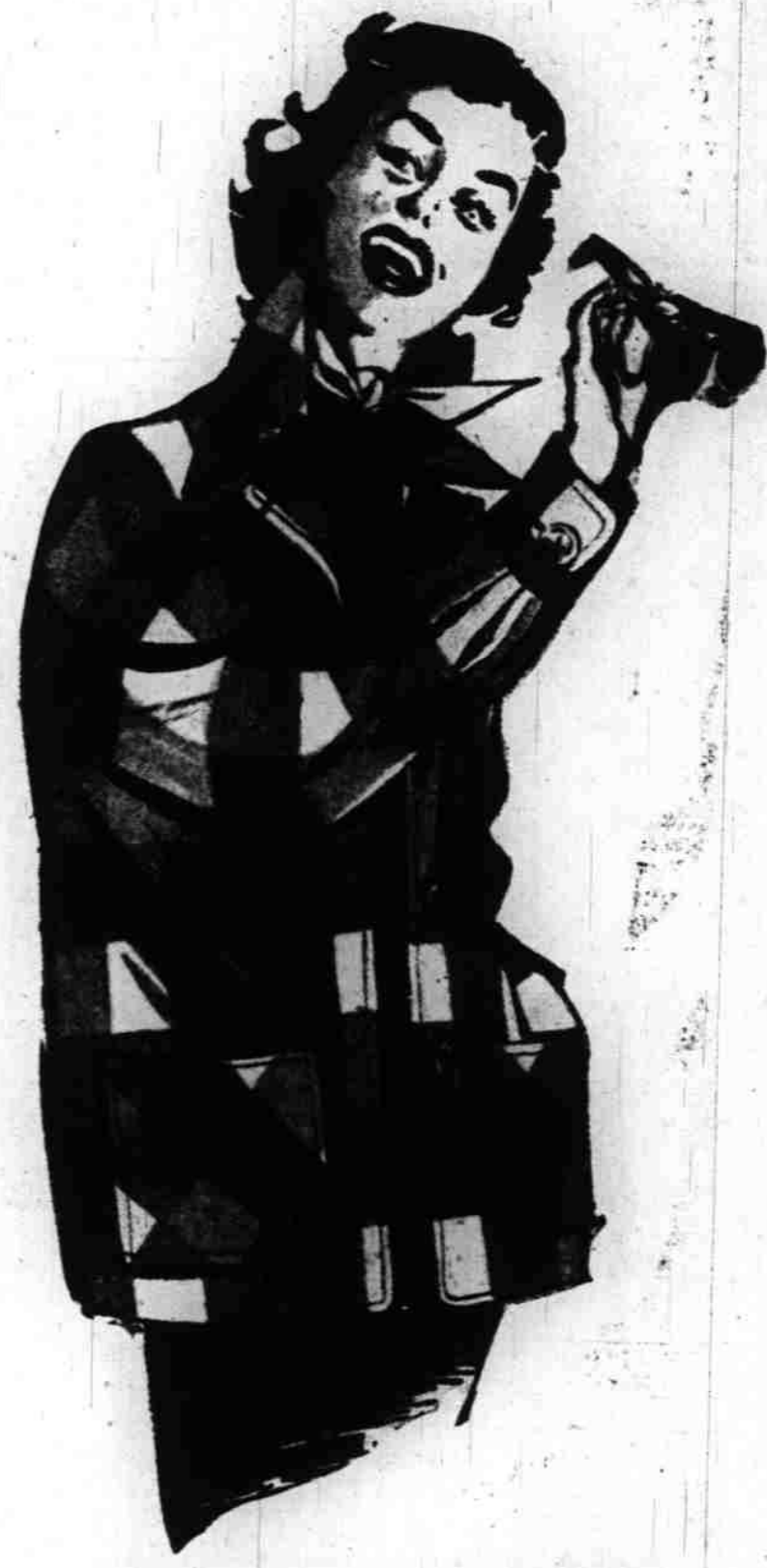
GLOVES

Doeskin Nylon 1.98

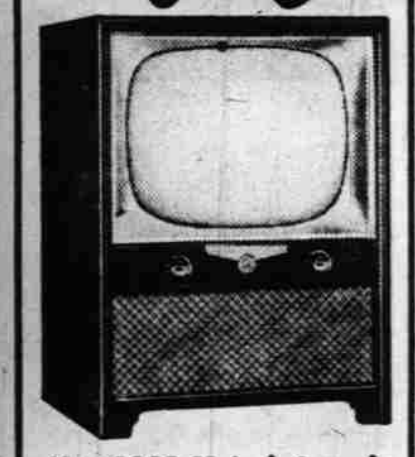
VAN RAALTE SHEER NYLONS

60-gauge 15 denier in all sizes. Proportioned Lengths 1.65
51 Gauge, 15 Denier . . . 1.35

Roberts Bros. 177 North Liberty



Everybody wants a **Motorola TV for Christmas**



New 1955 21-Inch Console
Bigger Extended Area Screen. Lifetime Focus. Distance Selector. Built-in UHF-VHF antenna. Mahogany finish. (Blond, slightly more) Fed. tax, warranty, included in price.

MODEL 21K19 **\$249.95**

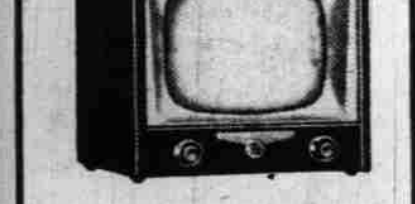


TABLE MODEL TV
The perfect "extra" set! New 17-in. Extended Area screen. Distance Selector switch. Smart ebony finish. Mahogany or blond slightly higher. Fed. tax, warranty included. Model 17T20E **\$179.95**

Prices include Motorola's Famous 82 Channel Tuner

MITCHELL'S Radio and Television
Installation Sales & Service
1880 State St. Ph. 37577
2-N Green Stamps

WE GIVE AND REDEEM 2-N GREEN STAMPS

Famous **Mojud Nylon Hosiery \$1.35**

Sheer, sheer 15 denier, 15 gauge in self seams and dark seams! Proportioned lengths! All sizes.
Lingerie — Main Floor



Van Raalte **Nylon Slips \$5.95**

Lace trimmed and embroidered styles—tailored styles—sizes 32 to 40—white and colors.
Lingerie — Main Floor

14.95 VALUE! SPECIAL PURCHASE LADIES WASHABLE WOOL PLAID JACKETS

A tremendous purchase by Roberts just right for gift-giving! Completely washable plaid jackets in the gayest plaid combinations yet! Sizes 10 to 20. **\$8.88**

Sportswear — Second Floor

Give **NoMend** beautiful stockings and you give the finest!

FULL-FASHIONED OR NO-BEAM

A stunning box of NoMends is truly a "personal" gift. For NoMends are the only stockings to come in the "FAMOUS 5" Proportioned Leg Types. SHE will appreciate your thoughtfulness in giving her the stocking "that is exactly her," in our exclusive holiday box from Switzerland. Let us help you select the NoMend stocking style to suit her, in beautiful NoMend FASHION APPROVED colors.

Luxury Sheers Box of 3 \$5.65 per pr. \$1.95
Daytime Sheers Box of 3 \$4.75 per pr. 1.46