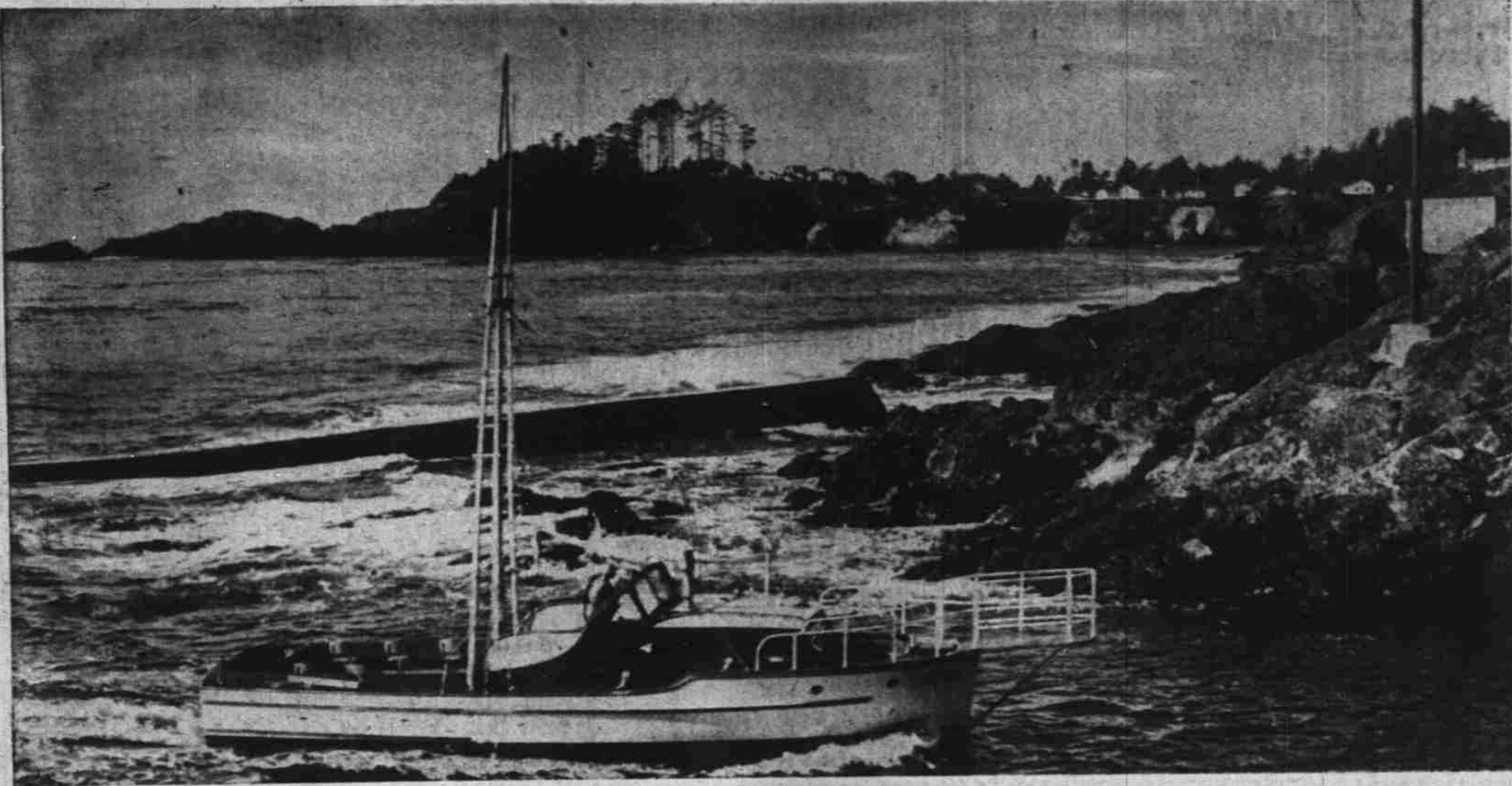


World's Finest Playground - - the Northwest

(Another in a series of special Statesman Vacation Pages)



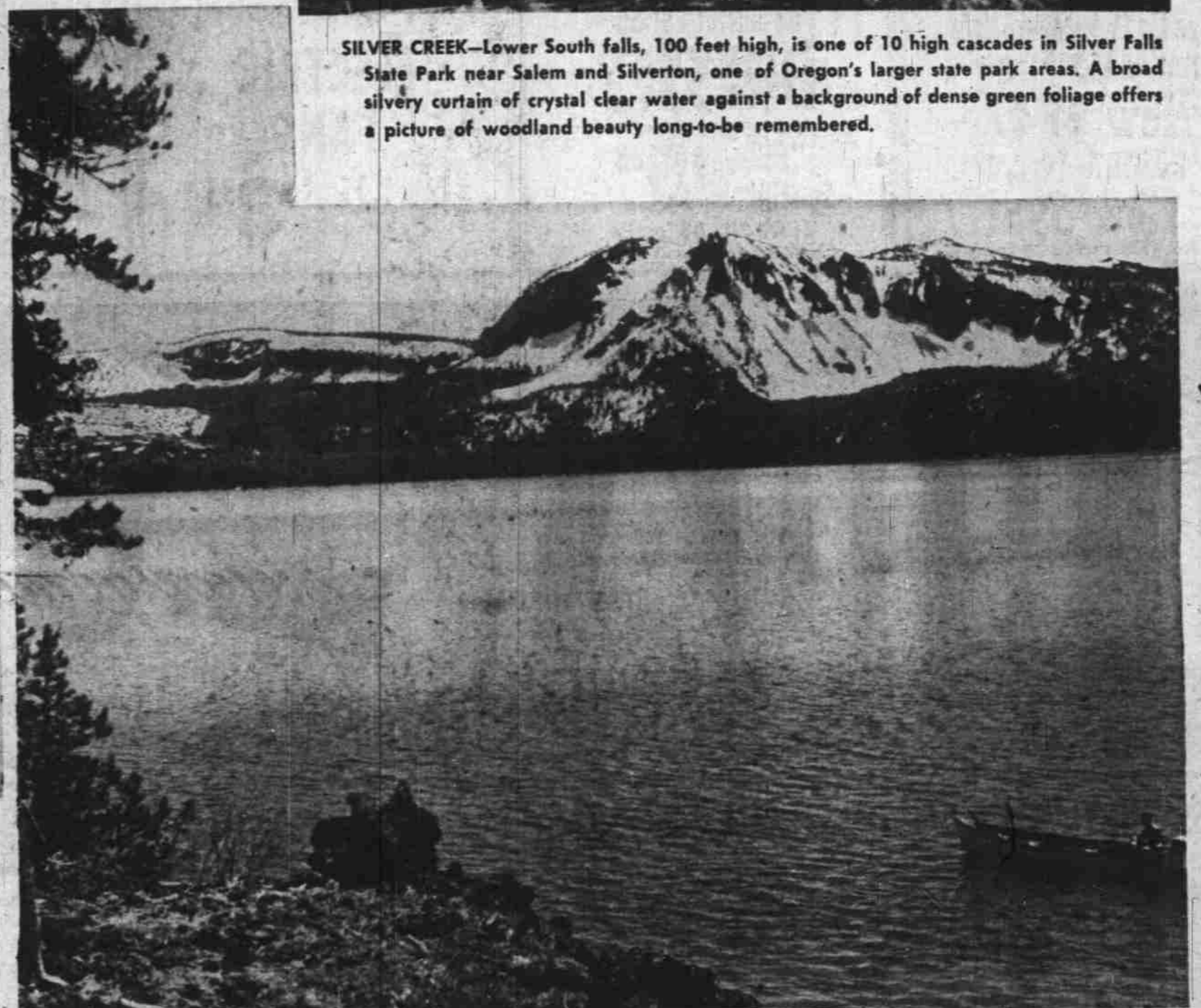
DEPOE BAY—Depoe Bay, along Oregon's 400-mile seacoast, is one of a number of places where deep-sea fishing centers. Sturdy craft take visitors and natives to fishing waters beyond the surfline where it's fun to "try your luck" or just go along for the trip. (Oregon State Highway Department Photos)



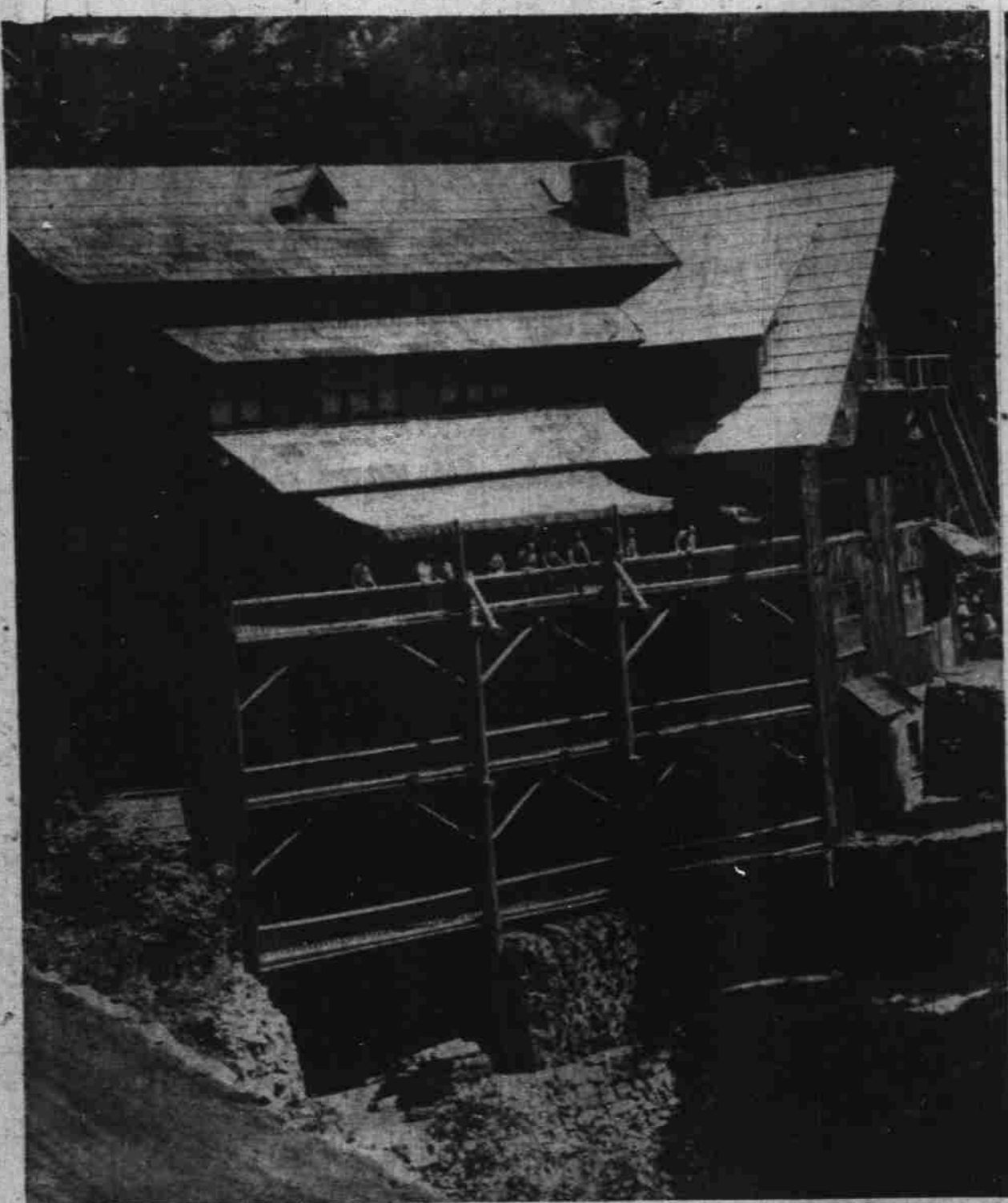
SILVER CREEK—Lower South falls, 100 feet high, is one of 10 high cascades in Silver Falls State Park near Salem and Silverton, one of Oregon's larger state park areas. A broad silvery curtain of crystal clear water against a background of dense green foliage offers a picture of woodland beauty long-to-be remembered.



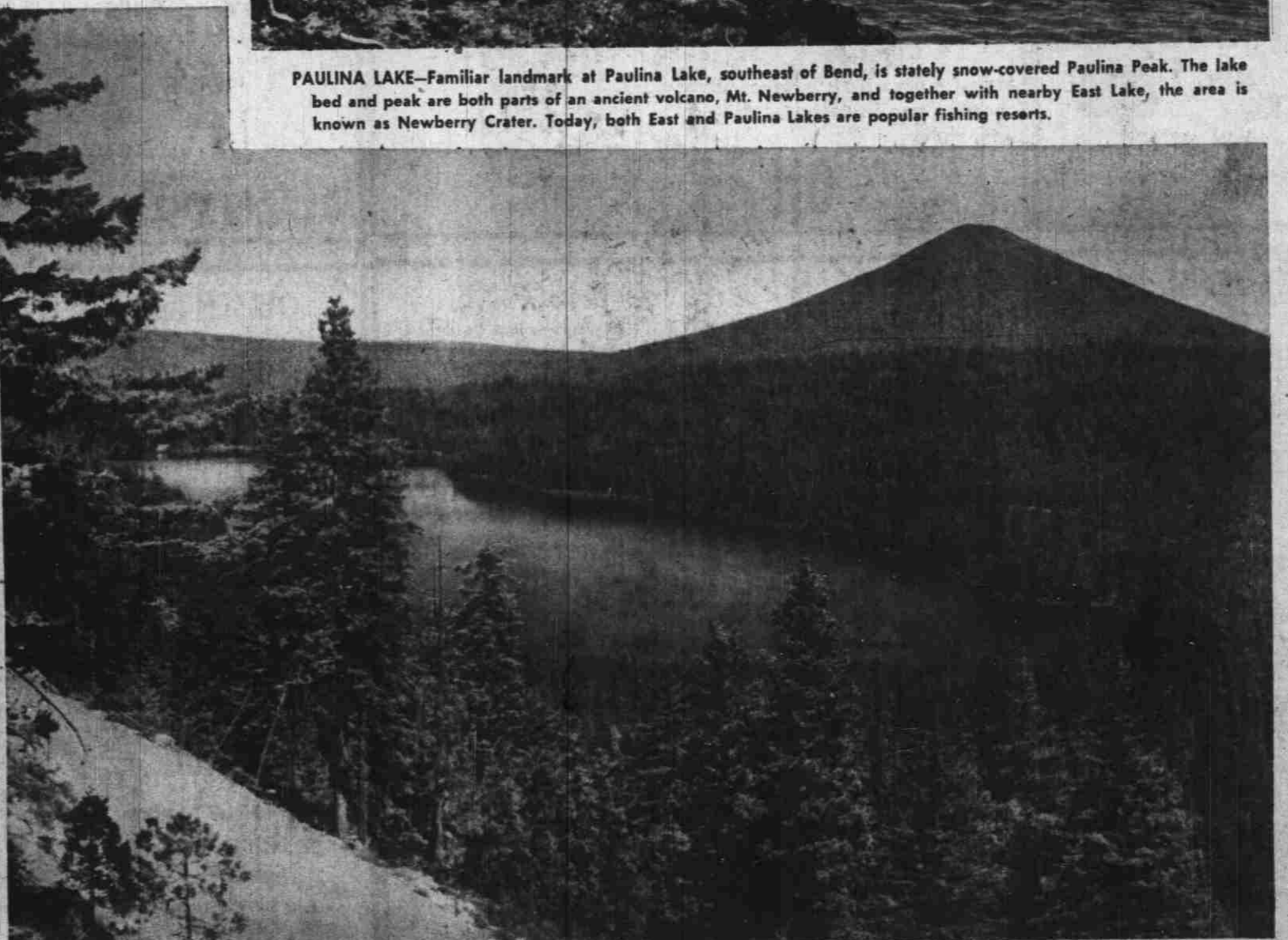
DAYTON—The military blockhouse was built at Grand Ronde in 1856. U. S. troops were stationed here and it was named Fort Yamhill. Many famous army men, including General Sheridan, served with it. By permission of the federal government the fort was moved to Dayton and reconstructed in 1911, through the efforts of John G. Lewis. It was rebuilt as a memorial to Gen. Joel Palmer, founder of Dayton and donor of Dayton Park.



PAULINA LAKE—Familiar landmark at Paulina Lake, southeast of Bend, is stately snow-covered Paulina Peak. The lake bed and peak are both parts of an ancient volcano, Mt. Newberry, and together with nearby East Lake, the area is known as Newberry Crater. Today, both East and Paulina Lakes are popular fishing resorts.



GRANTS PASS—The Oregon Caves Chateau, in a setting of forests primeval, is near the entrance to the Marble Halls of Oregon, an underground region of unusual and spectacular formations carved and formed through the patience of the ages allied with water erosion, the artful handiwork of which can be seen all along the passageways.



SANTIAM PASS—Suttle Lake is held in the sylvan embrace of deep forests along the Santiam Highway between Salem and Bend. Resort facilities are available at the lake which is a popular destination for boatmen, anglers, hikers and vacationists in general. Black Butte, nearly 7000 feet high, towers over Suttle Lake in the background.