

WILLAMETTE VALLEY FARMER

News and Views of Farm and Garden — by LILLIE L. MADSEN

Grain Nursery To Be Viewed On Farm Tour

The Marion County cereal tour is scheduled to start at 10 a.m. Monday on the Robert Clark farm, one mile north of Hoppere on the Salem-St. Paul highway, Hollis Ottaway and Ben Newell, Marion County extension agents, who are charting the tour, report.

Tour participants will observe numerous grain varieties, examine newly constructed grain storage and review various fertilizer combinations used on spring barley. Many varieties of barley, oats and wheat, both winter and spring were planted on the Clark farm by Dr. Wilson Foot, professor of farm crops, Oregon State College. The spring grain varieties look especially good at present Newell reports. This cereal nursery is part of the experiment station program to develop superior grain varieties for the Willamette Valley.

In addition the grain varieties seen on the Clark farm, tour participants may wish to observe the results of pre-emergence spraying of field corn, Newell adds.

The second morning stop will be on the Andrew DeConick farm two miles north of the St. Louis community. DeConick is completing a 300-ton grain elevator where two-by-four cribbing has been used in construction. In addition to the new warehouse, excellent spring grain and the results of 2,4-D spraying will be shown.

Fertility trials on spring grain will be seen on the Boyd Brown farm one mile east of Hubbard, beginning at 1:30 p.m. Outstanding phosphate responses are now visible on this high grade Amity soil type. Tom Jackson, extension soil fertility specialist, will review the correlation of soil tests and the fertility program for grain crops.

Tour participants will be interested also in observing the comparative results of anhydrous ammonia and ammonium nitrate used in spring wheat on the Brown farm. This is the only afternoon stop. The tour will end about 3 p.m.

No Chemical Will Make Quality Hay

Salt in the hay won't stop wet hay from heating, county extension agents are warning. If enough salt were used to prevent fire, the hay would be too salty for animals to eat.

High moisture hay can be stored over air ventilation systems on a mow-drying principle, using either heated air or natural air. There is no chemical shortcut to make high quality hay.

Says Women Make Best Paperhangers

ALDEN, N. Y., (INS) — Women prefer women paperhangers over men paperhangers, says Mrs. Earl Nehrboss, for nearly 30 of her 60-odd years a professional in the field.

Mrs. Nehrboss says that it isn't just because a woman can do a neater job of paperhanging than men. It's the extra service that the housewife gets from women paperhangers that counts.

"I can baste a roast in the oven, keep tabs on the baby when the mother is off shopping, answer the telephone or whip up lunch for home-to-lunch school kids," Mrs. Nehrboss says. "What man paperhanger can do those things?"

Mrs. Nehrboss became a paperhanger 28 years ago to support her three children after her husband was disabled in an accident. She suggests it as a career for women who need to earn extra money.

"Any woman who can cut a dress pattern can become a good paperhanger," she says. "The work has become easier for me as the years have rolled by, partly because of experience but largely because modern wallpapers are far easier to apply than the papers of three decades ago. Once the word gets around among women that you're a good housekeeper as well as a good paperhanger, the women will pick you for the job almost every time."

13th WED PHILADELPHIA, (INS) — Mary A. Fuhrmeister and Robert M. Mallon, who were married recently in Philadelphia, are each the 13th child of their respective families.

Double Use Of Sprayers Is Dangerous

Your neighbor's farm or garden may have suffered no damage when he washed out his weed sprayer before using it to spray plants with an insecticide. You try it, and your healthy tomato plants curl up and die.

Res. Warren, Oregon State College farm crops specialist, says much confusion has arisen over use of equipment for the dual job of controlling weeds and insects. It all depends on the type of weed killer previously used; the crops to be sprayed, and the method of cleaning equipment, he adds.

If the weed killer was a phenoxyacetic acid compound—2,4-D or 2,4,5-T or MCP—you might be headed for trouble. Most fruits, vegetables and legumes are injured in varying degrees by this family of chemicals. Beans, tomatoes, vine vegetables, grapes and tree fruits are highly susceptible. It is best to use a separate sprayer for them since no method of cleaning can be guaranteed to remove all traces of the weed killer.

For less susceptible plants such as corn and legume crops, however, the spraying equipment can be used again safely after it is thoroughly cleaned by one of several recommended methods.

To remove 2,4-D, 2,4,5-T or MCP, all pieces of the spraying equipment—tank, pump, spray booms—should be soaked for 24 hours in a one percent solution of household ammonia, at the rate of two teaspoonfuls per quart of water, and then rinsed several times with clear water. Or you can follow the same procedure, using household lye, one pound to 100 gallons of water.

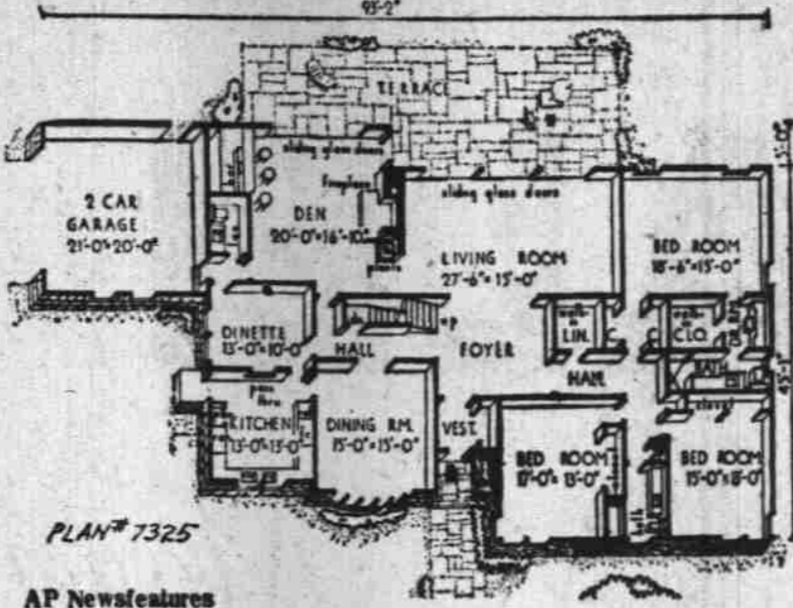
Another method is to wash the equipment thoroughly with a one percent suspension of activated charcoal and then rinse with clear water. Wooden spray tanks cannot be cleaned with any of these materials since the weed-killing acid is absorbed by the wood. If the weed killer used was a chemical other than one of the phenoxyacetic acid compounds, the spraying equipment may be re-used safely after being washed thoroughly with water and a small amount of detergent.

Linn-Lane Enters National Contest

The Linn-Lane Soil Conservation District has entered the national Soil Conservation Awards program sponsored by the Goodyear Tire and Rubber Company of Akron, Ohio, reports M. L. Vannice, Halsey, chairman of the board of supervisors. Other members are Ben Christensen, and George Lund, Harrisburg; Jud Porter, Brownsville, and C. A. Clark, Eugene.

As part of the contest, the district will compete with other districts in the United States for a one-week trip to Goodyear's winter resort in Arizona. The winning district will be eligible to send one member of the board of supervisors and a farmer cooperator.

HOMES FOR AMERICANS



AP Newsfeature
A BIG HOUSE, combining modern glamor in sliding glass walls facing the garden terrace with a traditional facade, this plan incorporates a variety of features. A spacious main floor den, with fireplace and built-in bar, two bathrooms and an extra lavatory are among the features. This is Plan 7325 by Herman York, architect, 90-04 161st St., Jamaica 2, N.Y. The house covers 3,130 square feet without its two-car garage. (Further information and blueprints available from architect.)

EXPENSIVE CUTS
DETROIT, Mich., (AP)—How much is a tree worth? A home building firm, was assessed \$3,900 by Circuit Judge Thomas J. Murphy for cutting down 10 oak and maple trees on two vacant lots without the consent of the owner.

For the Finest in WEDDING INVITATIONS DIAL 3-8853
Wally's Print Shop
Masonic Bldg. 495 State

From Damascus— Made specially for weight-watchers!

High-protein nourishment without those extra calories that add to the waistline! And Damascus Slender Cottage Cheese is every bit as delicious as any cottage cheese you ever tasted!

P.S. Try Damascus Slender Milk, too, and the wonderful Slender Frozen Dessert for ice cream fans. Both delicious!
Phone 3-3441

Look! It's Twins Again at SLEEP-AIRE MATTRESS CO.
Buy Direct from Factory and Save!

- 2 Headboards
- 2 Innerspring Mattresses
- 2 Matching Box Springs
- 12 Hollywood Legs
- 312-Coil Unit
- 5-Year Guarantee

All 18 Pieces \$90.00 Twin Size Sets

SEMI-FIRM SPECIAL! Mattress and Matching Box Spring
Twin Size 59.90
Full Size 64.90
840 Coils 20 Year Guarantee

4 1/2 FOAM RUBBER **POSTUREPEDIC MATTRESS**
Full 20-year Guarantee Modern Striped Ticking
And Special Box Spring Twin Size 69.90 Full Size 89.90
FOAM REMNANTS 50¢ UP

Sleep-Aire MATTRESS FACTORY
Use Our Layaway Plan Or Bank Terms
2002 Fairgrounds Rd. Open 'til 9 Mon.-Fri. Nights Phone 2-4677
Behind Hollywood Theater Free Delivery in Salem Area
SECOND STORE: BRIGHTER HOMES STORE, 858 PEARL STREET, EUGENE, OREGON

Schaefer's Rectal Ointment
Relieves pain and discomfort of irritation and itching piles. Contains Chaulmoogra Oil—Oil tree of Siam—Has been used by natives of India since time immemorial as a healing oil.
75¢ Tube with pile applicator. Only at
SCHAEFER'S DRUG STORE
Open Daily 7:30 A.M. to 8 P.M. Sundays, 9 A.M. to 4 P.M. 135 N. Commercial

Roberts Bros.
340 Court Street
YOUR BIGGEST VALUE IN REFRIGERATION

1954 GENERAL ELECTRIC

BIG! almost 8 cubic ft.

- ★ Full Width Freezer
- ★ New G-E Color Magic
- ★ Chiller Tray
- ★ Aluminum Shelves
- ★ Big Capacity
- ★ Famous G-E Dependability
- ★ 12.7 sq. ft. Shelf Area

\$177.00
and your old operating refrigerator

SAVE \$123.00
on this
GIANT 11 Cubic Foot General Electric FREEZER

counter balanced lid
interior light
positive action lid
Aluminum lined
adjustable controls
5 year protection plan
390 lbs. of food

Originally \$399.95
NOW \$277.00

- ★ also available in 11 cubic foot Upright
- 15 cubic foot Upright

WE GIVE AND REDEEM GREEN STAMPS