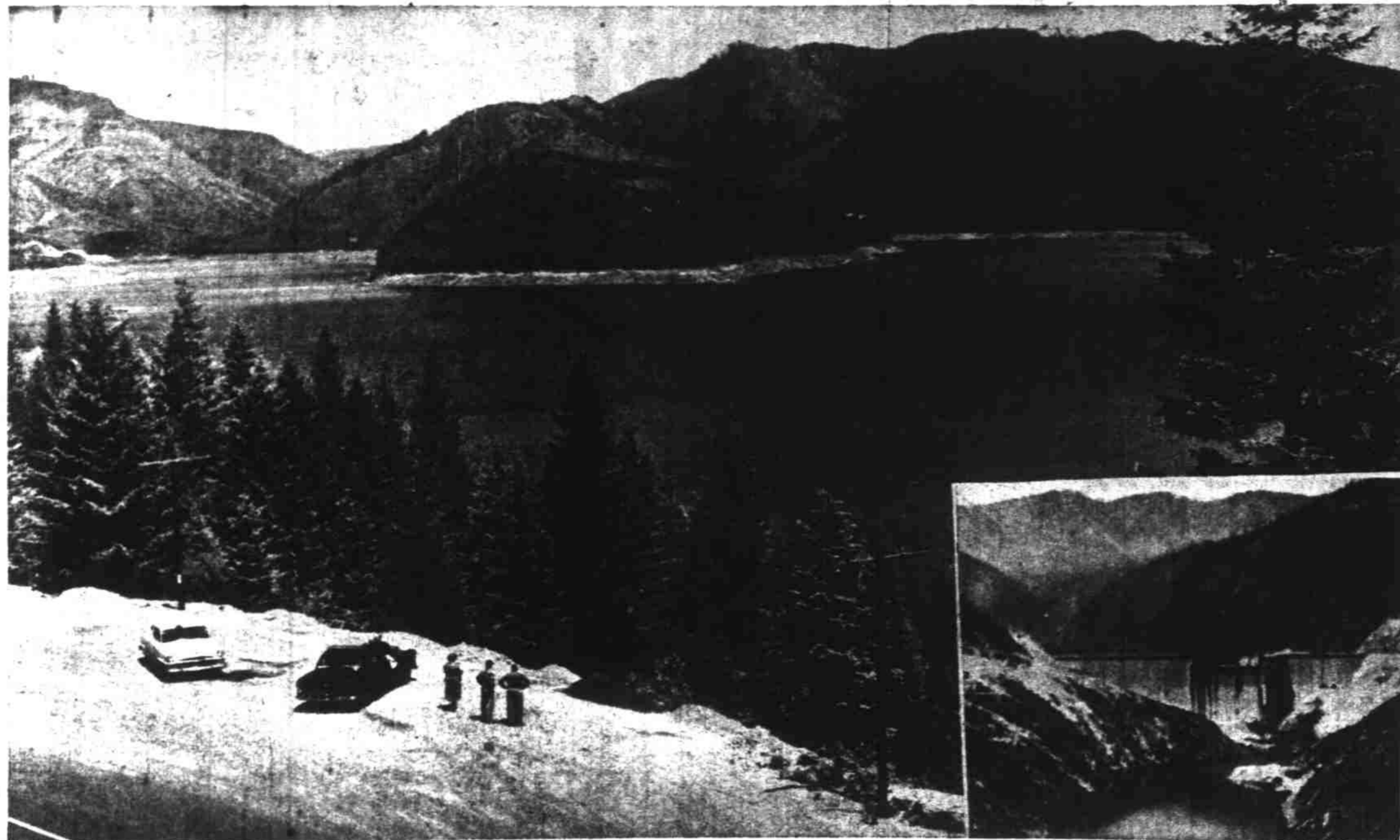


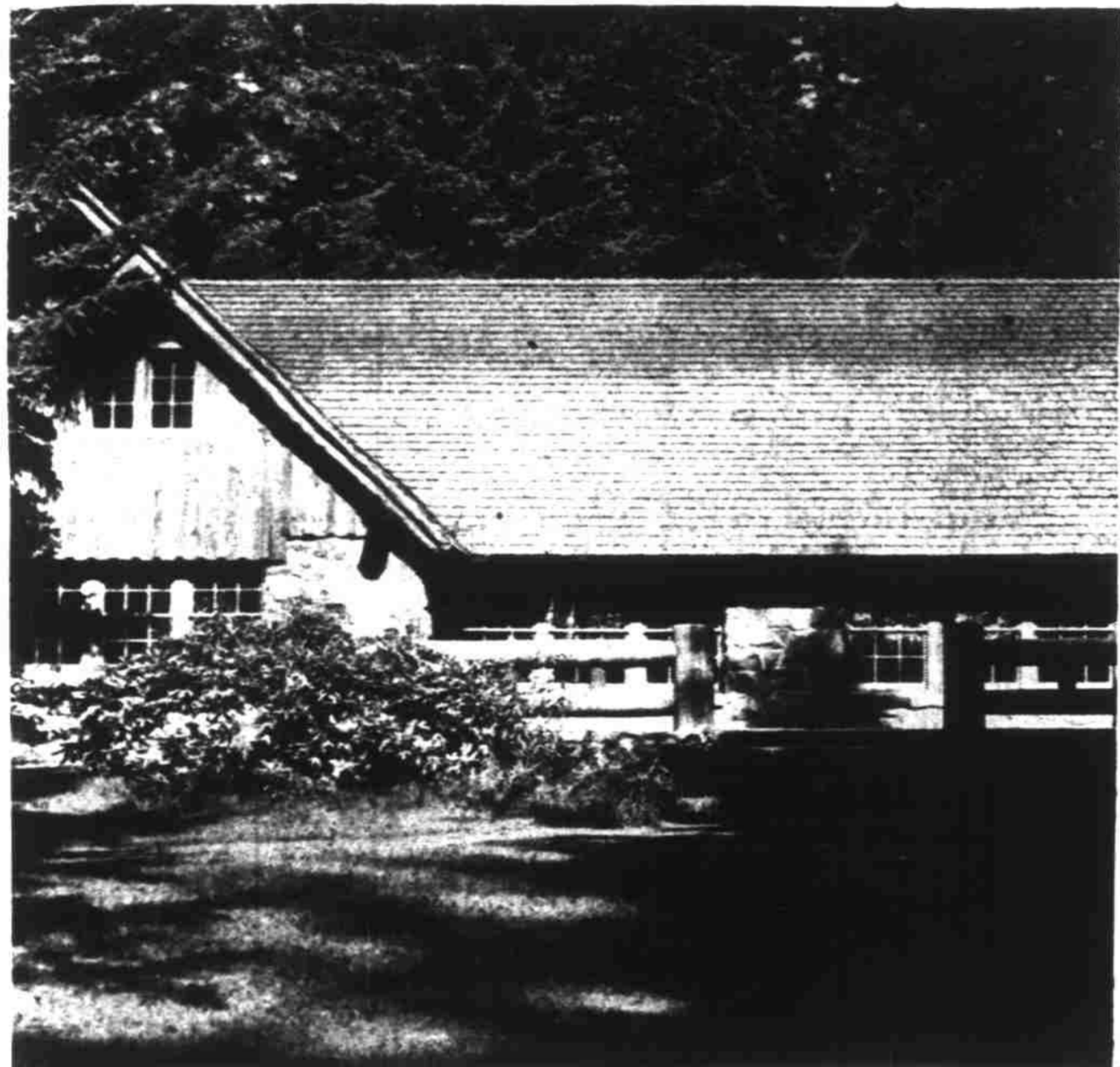
It's Getting Close to Play-time In Oregon Again



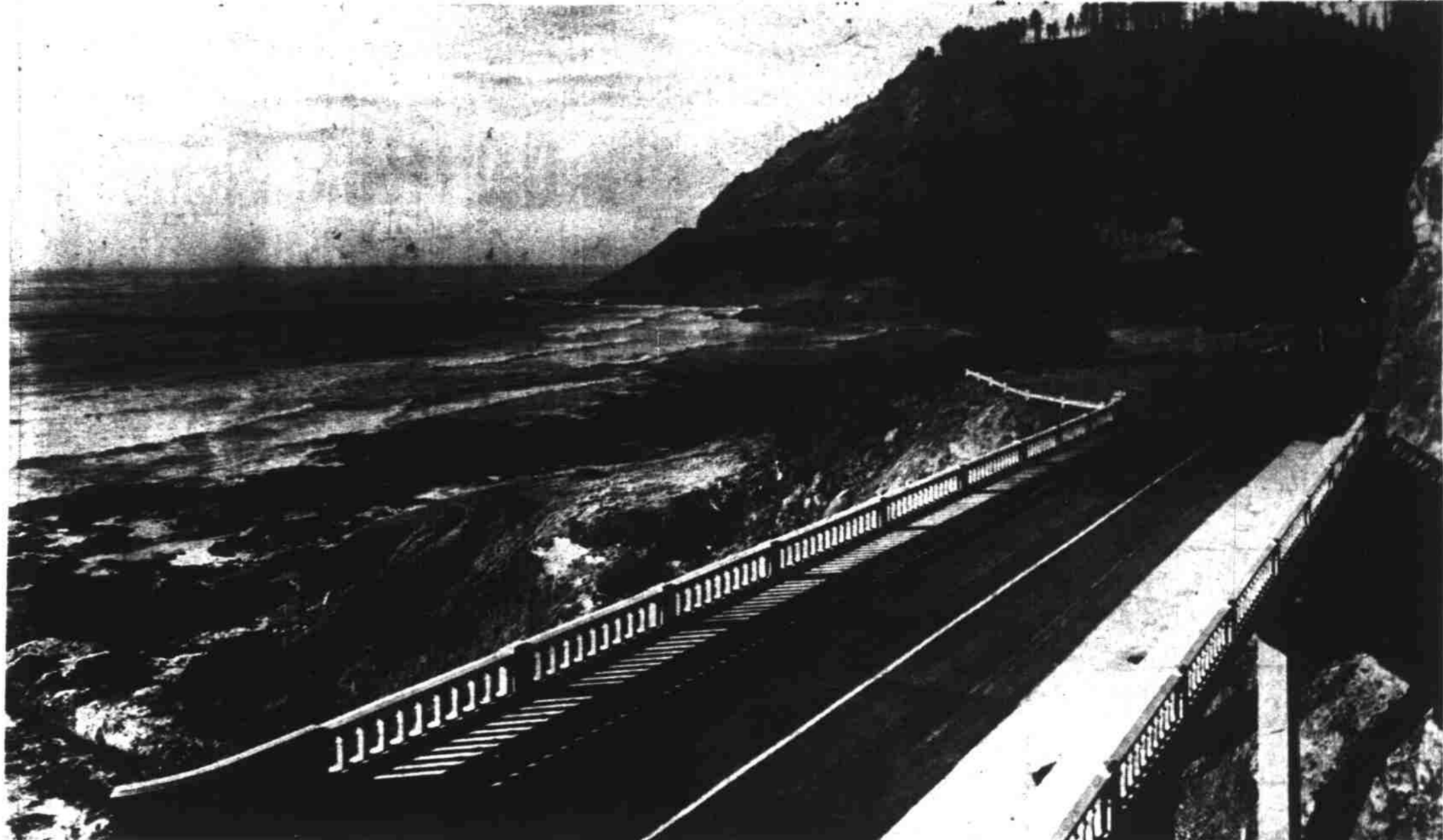
DETROIT—The huge lake back of newly-constructed Detroit Dam on the Santiam River is Oregon's latest playground. On weekends, the lake is alive with boats and fishermen—and some of the catches have been well worth boasting about. The great dam itself (shown in inset) also is one of the outstanding engineering achievements in the Northwest and a worthy tourist attraction. (About 50 miles east of Salem on Highway 222). (All photos from files of Oregon State Highway Commission).



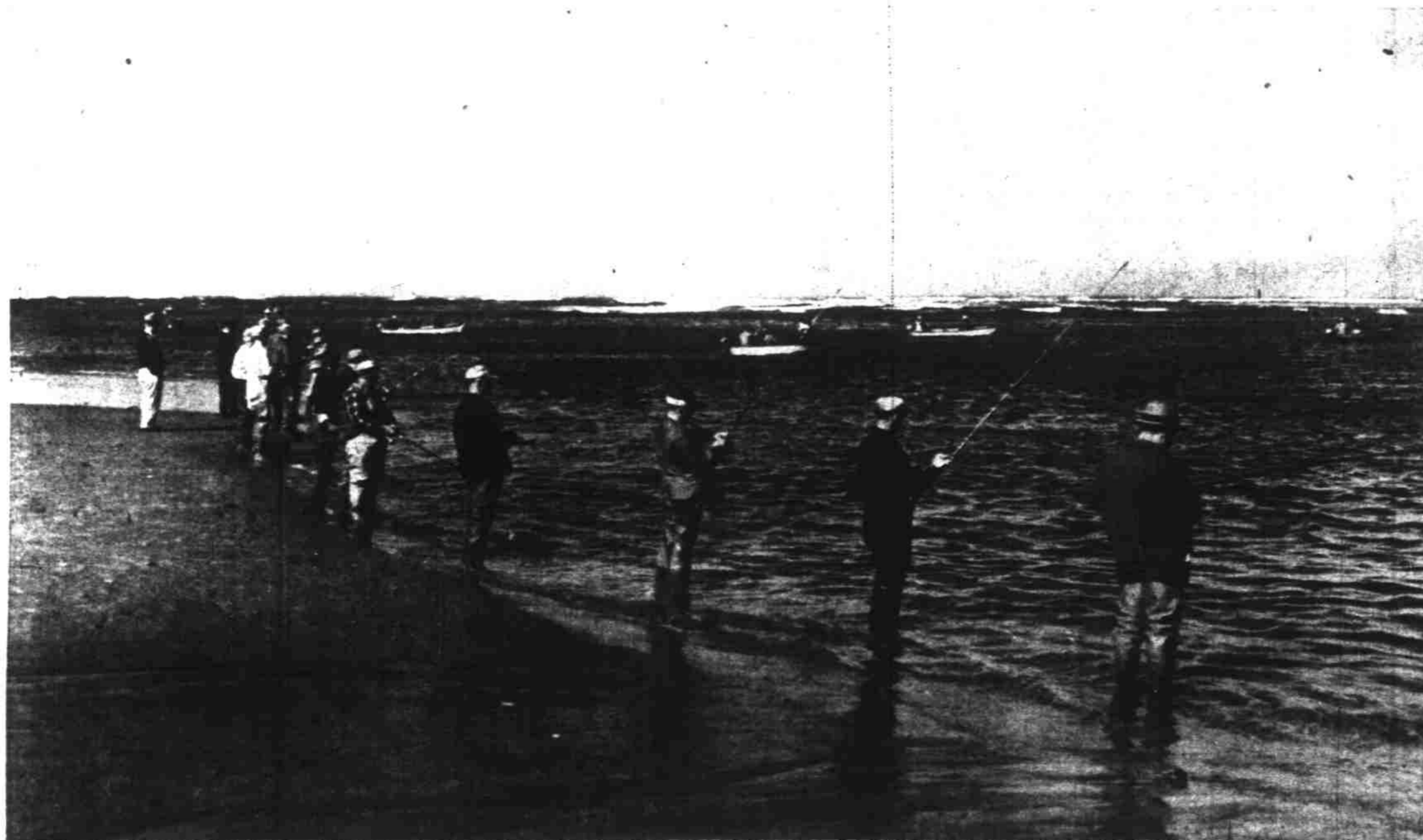
BREITENBUSH—Glistening under the summer sun, Breitenbush lake, rests near the base of 10,459-foot Mt. Jefferson, second highest peak of Oregon's Cascade mountains. (About 65 miles east of Salem via Highway 222 to Detroit).



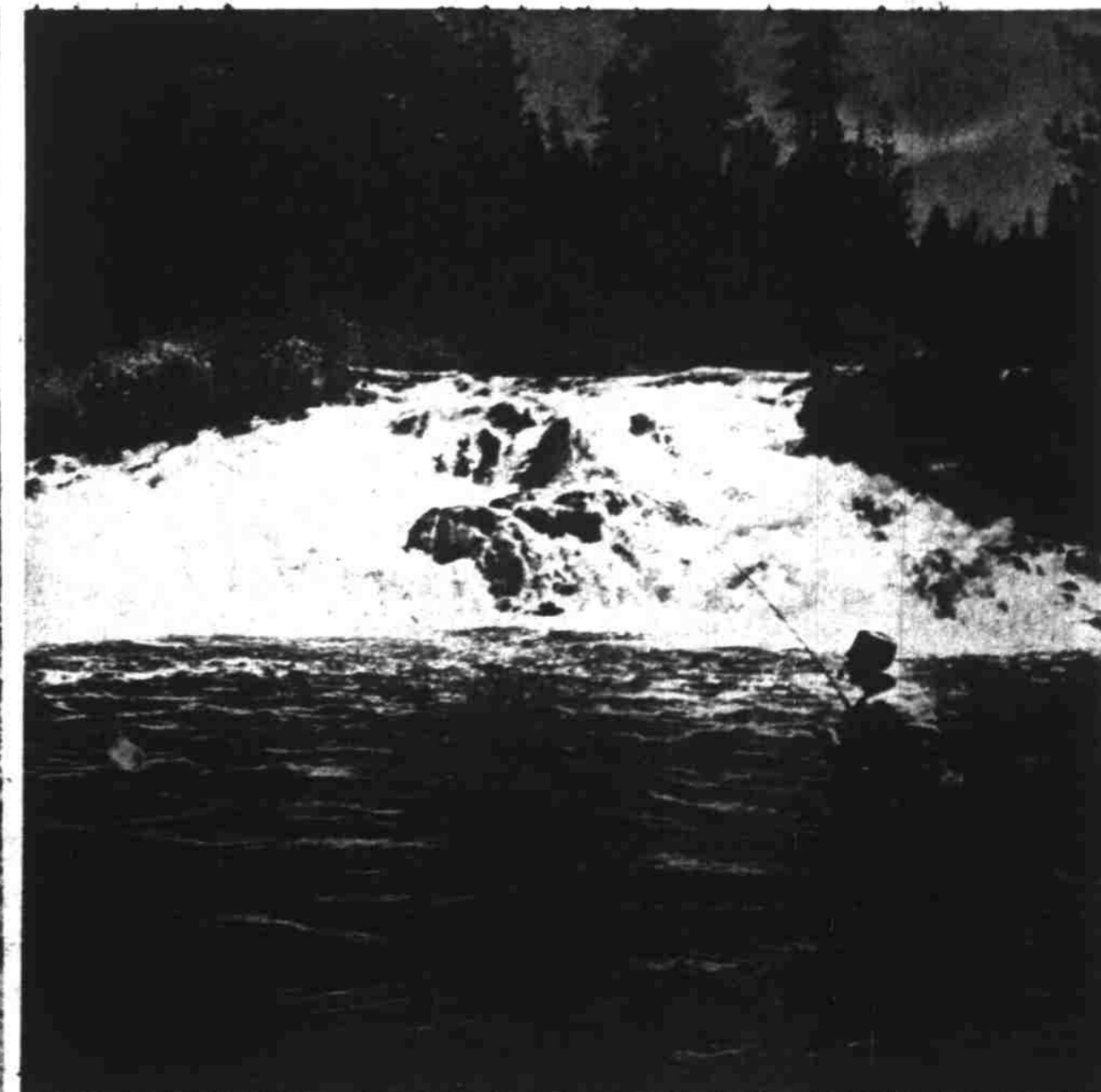
SILVER CREEK—One of 10 beautiful falls in Silver Falls State Park, the Middle North Fork drop shown above cascades water 106 feet over volcanic rocks in a spectacle which draws thousands annually. (About 30 miles east of Salem, or through Silverton slightly to the north, on Highway 214).



YACHATS—Cape Perpetua, in the extreme southwest corner of Lincoln County along the Oregon Coast, is one of Oregon's historic geographical features. History says it was discovered on May 7, 1788, by Captain James Cook, English explorer who is said to have named it because stormy weather kept him "perpetually in sight of it." The Coast Highway, U. S. 101, now cuts around its shoulders above the sea. (Oregon State Highway Commission Photo).



WALDPOR—Surf fishermen line the sand at Alsea Bay near Waldport during the salmon runs. Each year, too, Waldport sponsors a salmon derby, one of numerous such sporting events along Oregon's 400-mile Pacific Ocean parkway. Most of these fishermen are participating in a derby. (About 110 miles southwest of Salem via Highway 222 to Coast and then south on Highway 101).



SEND—In the central Oregon region anglers are lured to the forest country by such streams as Fall River where trout rise eagerly to the fly in their season. Fall River derives its name from a series of falls, such as seen in the background. (About 140 miles east of Salem via Highway 222).