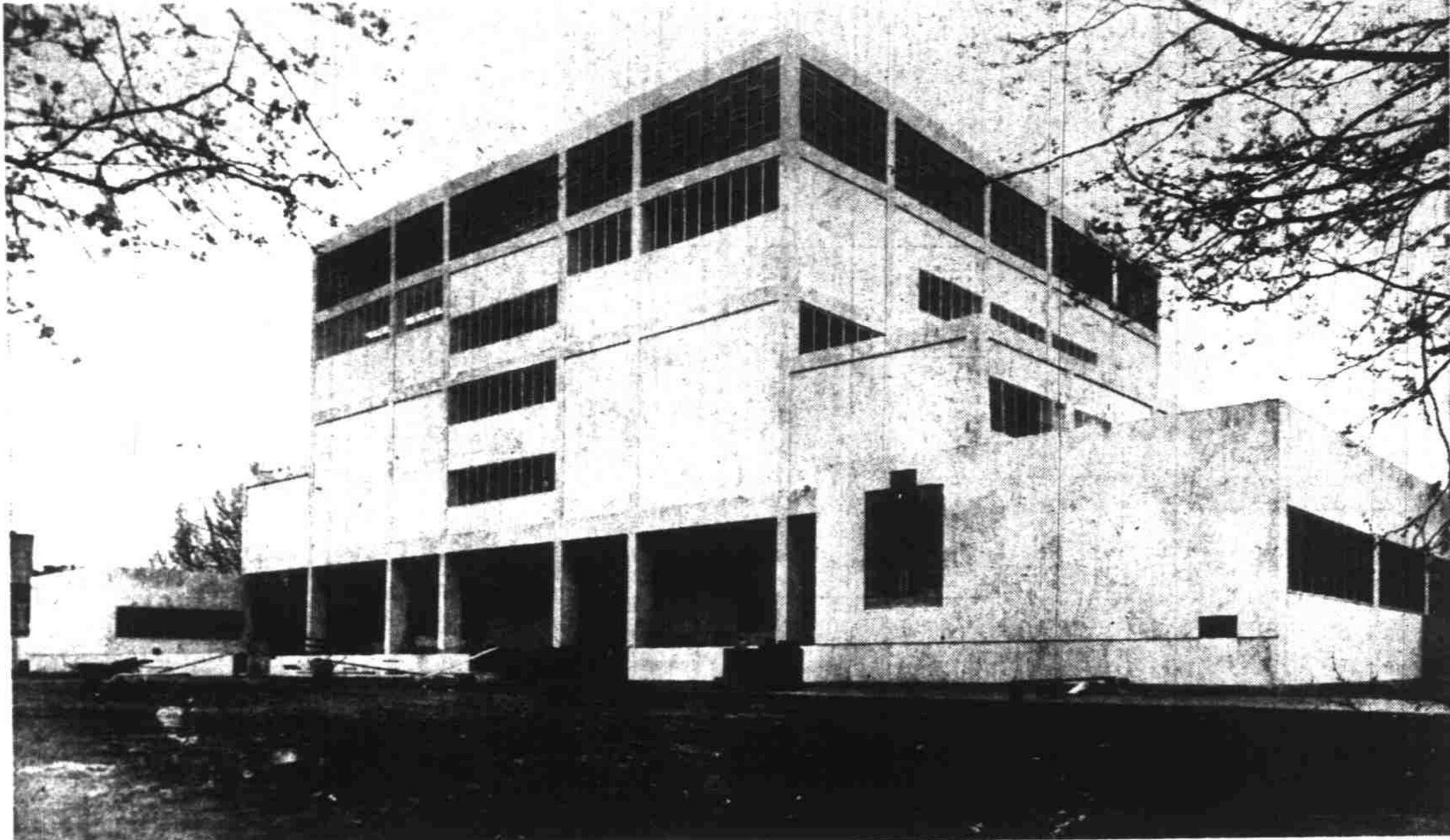


# New Courthouse All But Finished



Gleaming marble walls are featured in this frontal exterior photo of the nearly-completed Marion County Courthouse. Crews under Viesko and Post, general contractors, are putting finishing touches, such as outside front steps and electrical wiring to the structure. Some offices are already occupied, and the entire building probably will be occupied later this month. The above photo shows the front or High

Street side of the building and details the "jail-with-a-view" on the very top. Niche in wall at lower right is where the veterans memorial sculptured frieze (shown at lower left on this page) will go. Unlandscaped grounds are in foreground. (All photos by John Erickson, Statesman photographer.)



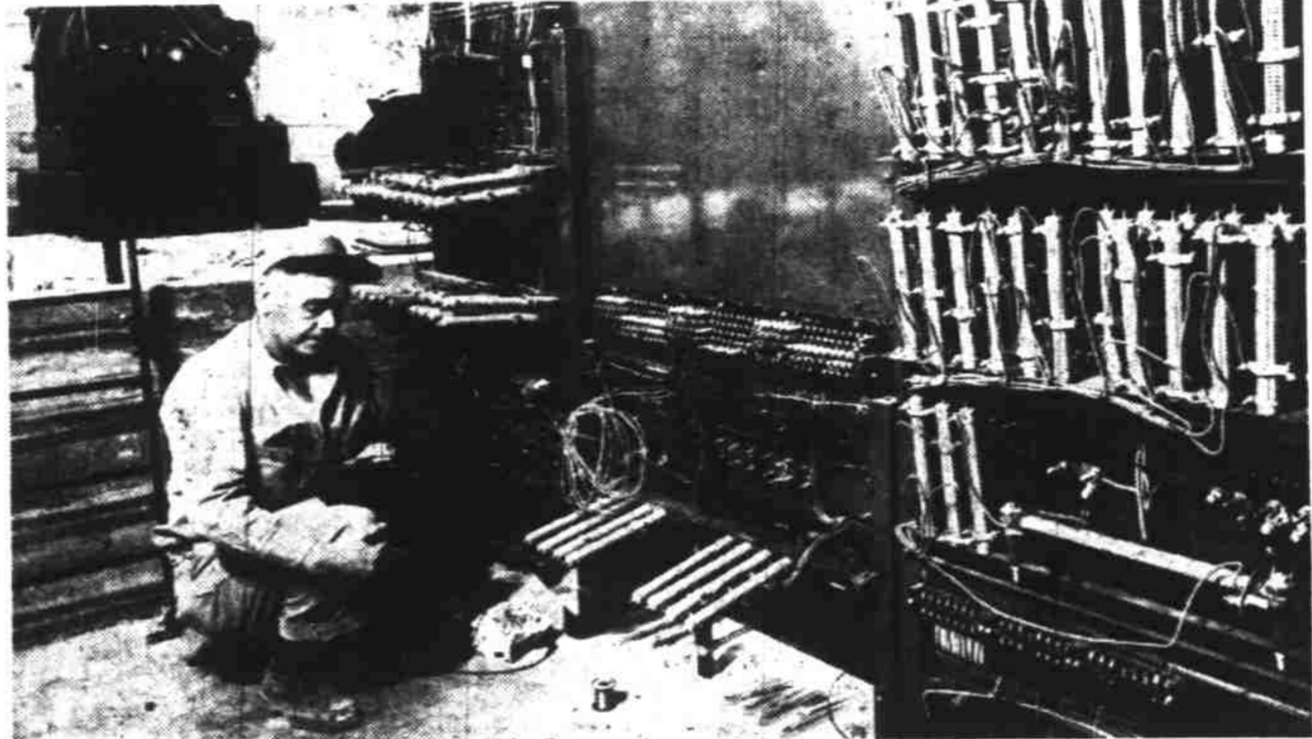
Typical of office space in the courthouse basement is this office (shown above) of the county extension agent. Clerk Mrs. Robert Purdy, 2142 N. Commercial St., is shown behind counter waiting on a customer, Mrs. James Comstock of Monmouth (right). Seated clerk is Mrs. Fred Bock, 1315 Reedy Dr. The extension office moved into its new quarters in February. The multiple rows of fluorescent lights, coupled with the long "picture" windows, provide a more than adequate light throughout the building. The simple, straight lines of the furniture carry the modern theme.



Units supplying air to the third-floor courtrooms are shown in this "penthouse" room (above). W. (Dinty) Moore, mechanic for the Johnson Service Co., examines an intake unit. Similar rooms of units for servicing the rest of the building are located in other sections of the courthouse.



Work yet to be done on the "assembly line" counter on the courthouse main floor is indicated in the photo above. The long counter will serve the county clerk, recorder, tax and other offices. Position of these busy offices on the main floor is for convenience of the public which enters building through nearby main entrance.



A maze of wires and control boxes direct the three elevators in the courthouse. Shown above is Paul L. Sheets, Portland, construction mechanic, adjusting controls on the panels. This control room is on the "penthouse" atop the building.



Heavy steel walls and doors characterize the detention department atop the building. Shown above is a typical jail cell in the adult division. Shelf-like items on the sides are all-steel bunks. There are separate sections for men, women and juveniles.



Most court-connected offices are on the second and third floor. Shown in photo above is District Attorney Kenneth Brown standing in reception room of district attorney's suite of offices. Doors at left lead into office rooms of deputy district attorneys. Open door at rear righthand corner leads to Brown's office.

## County Offices Move to Courthouse This Month

Many years of planning and two years of construction will be climaxed this month when Marion County offices will be moved into the modern white-marbled new courthouse in Salem.

Some offices have already been located in the new structure but the main bulk are expected to move from present quarters in the School Administration Building about mid-month. The offices were "farmed out" to various locations when the old courthouse was razed to make way for the new.

Finishing touches on the five-story structure are underway by contractors with an unofficial target date of May 15 set for completion. General contractor is the Viesko and Post company of Salem.

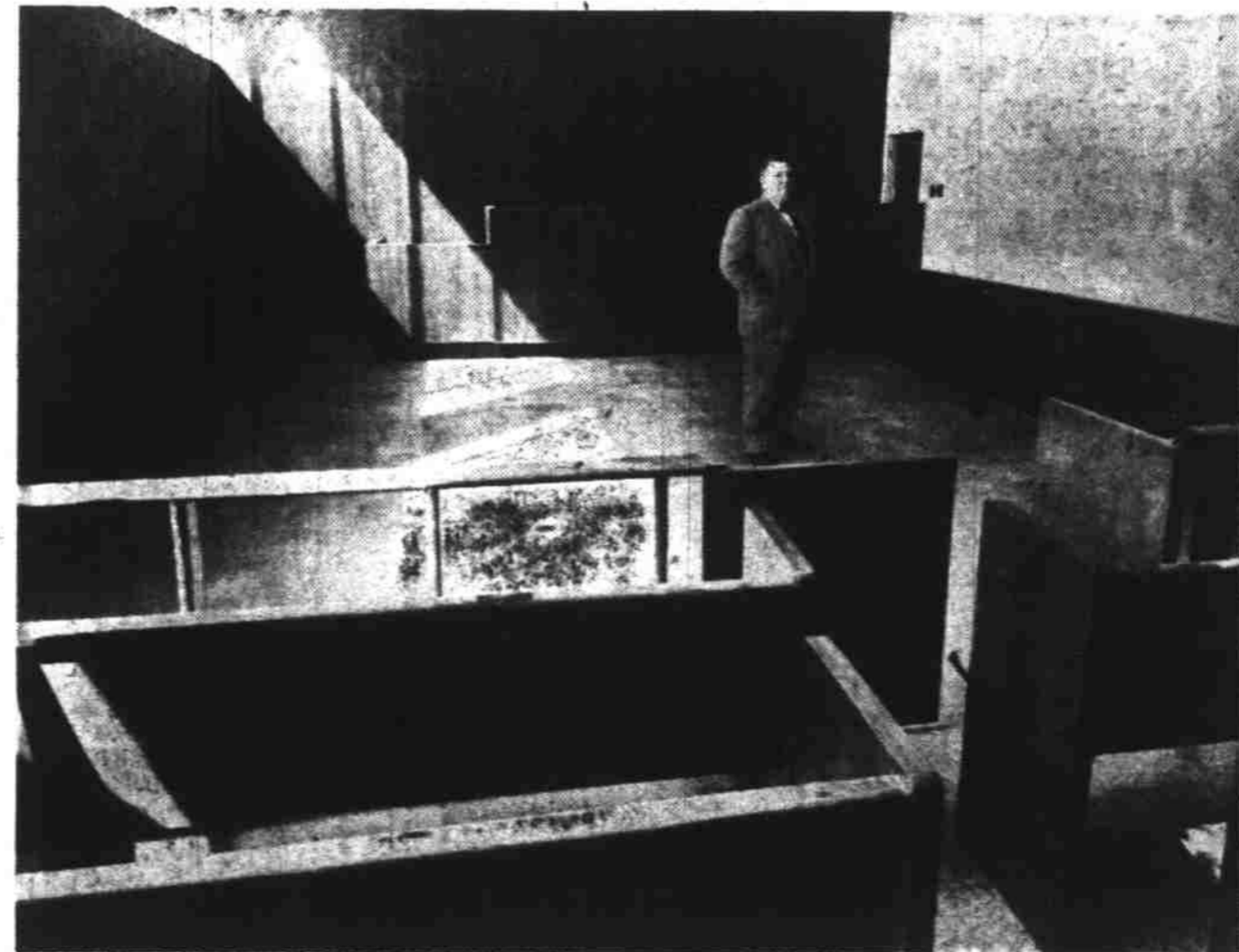
Prisoners, now kept in the Salem city jail and in the Albany County jail, will be moved to the new county jail atop the courthouse about the 15th of the month, Sheriff Denver Young said Sunday.

For the first time in several decades, Marion County offices, except for County welfare, will all be located in one building. County school offices, one of the first to be shifted when the county outgrew its old courthouse, was one of the first to move into the shiny new structure earlier this year.

The transfer of county offices from the School Administration Building will partially empty that building. When the school administration offices move to their new building at 13th and Ferry streets later this year, the old School Administration building will be torn down to make way for a new Meier and Frank Co. store.



Fredric Littman, Portland sculptor, this month started cutting from marble the bas relief figure (shown here) which will fit into the niche left in the marble wing face of the courthouse (see above). Shown here is the clay model recently completed by the Hungarian-born sculptor. From it will be carved the marble relief which is to be dedicated as a memorial to veteran and other patriotic organizations. The \$15,000, seven-inch thick 5,000-pound slab of sculpturing is expected to be ready for dedication ceremonies next Nov. 11. The sorrowing figure in the bas carries in her hand



Typical of the well-appointed but decorous courtrooms in the courthouse is the district courtroom shown above. District Judge Val Sloper stands near the long jury box in the courtroom he will soon occupy. Judge's bench is to the rear. Walnut wall panels, and cork-tile floors grace the courtrooms, including the several circuit court chambers.



Workmen are shown here putting the finishing touches to the 36-foot walkway, which leads from the High Street sidewalk to the building's main entrance. Grounds on both sides of the walk will be landscaped and planted to lawn. Parking lot is at rear of building.