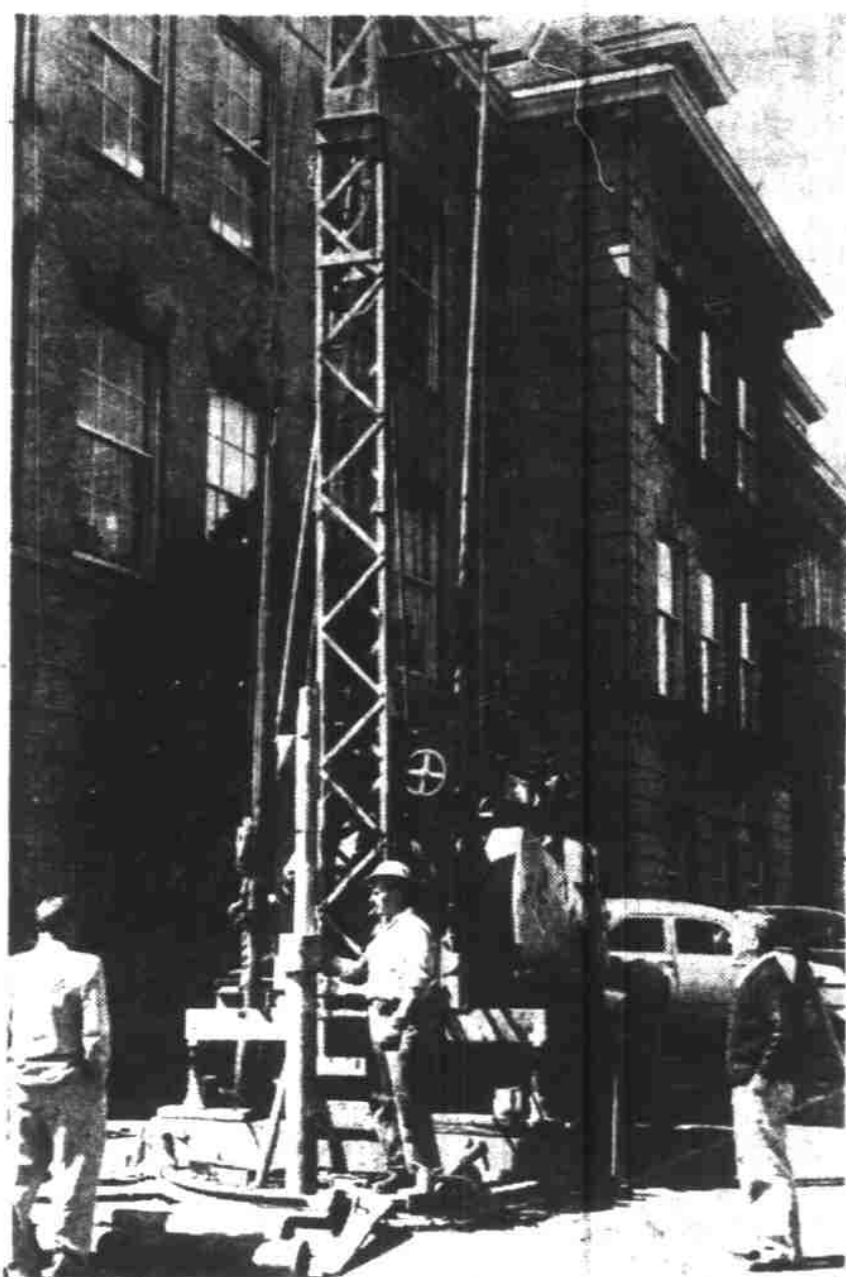


Foundation for Store Tested



They are not digging for oil in front of the old high school building—just investigating foundation conditions preparatory to the start of construction on the new Meier and Frank building. The well digger shown is from the A. M. Janssen Drilling Co., Reedville, and supervisor of the project, Sergio R. Zegers, Portland, is shown at right. (Statesman photo.)

PTA Delegates Get Busy Start At Convention

(Story also on Page 1.)
Opening of the Oregon Congress of Parents and Teachers state convention in Salem today will see some 1,500 delegates off to a busy start on a packed activity schedule.

More than 60 members of the state board of managers—Oregon PTA officers, committee leaders and others—met Tuesday for convention preliminaries and delegates by the scores began registering Tuesday night at Marion County's new courthouse.

In Tuesday's all-day get-together of state leaders at First Methodist Church, pre-convention business and instructions predominated.

Reorganization Plan

Work of the nominations committee, reported the chairman, Mrs. Russell Case of Portland, is left somewhat in question until the convention decides whether to adopt a recommended state reorganization plan.

State regions would be changed and eight instead of 10 vice presidents would be elected from them if the plan carries.

Mrs. John F. Abele was preparing to report on the Oregon PTA bulletin. The convention will be asked to approve a plan of having local chapters help pay for the printing if they order more than 20 copies.

Prominent among the men going over convention machinery at the last minute were Dennis W. Patch, Salem, convention chairman; and E. Dean Anderson, convention program chairman.

The general assembly opening the convention this morning will start at 10 o'clock at the Elsinore Theater.

'Tool Shops'

The Wednesday afternoon program features 11 "tool shops" in Willamette University buildings where groups of the delegates may gather from 2 to 4 p.m. for instruction on good PTA procedure in principal phases of the organization's program.

A 12th such session will be aimed specially at the relatively new high school PTAs, with Mrs. J. W. Staggs, state vice president, in charge. This will be held in the State Library Building.

Speaker for a general assembly tonight at 8 o'clock in Salem High School Auditorium will be Dr. Thomas Bennett, Willamette University professor, on "The Philosophy of Citizenship."

An informal reception for Mrs. Herman Nordfors, national vice president, will follow.

Ashland Plans Shakespeare Field Course

A Shakespearean field course, will be conducted at Ashland this summer in conjunction with the Oregon Shakespearean Festival. Instructor will be Dr. Margery Bailey of Stanford University.

Scheduled from July 22 through Aug. 5, the classes are open to both college graduates and undergraduates for two college credits.

Students may attend the first four performances of the festival which will open at Ashland Aug. 1 and continue for one month. Plays to be staged this year are "Hamlet," "Merry Wives of Windsor," "Henry VI" and "The Winter's Tale."

Salem Teachers Elect Merrill as New President

Dale Merrill, Bush School teacher, was elected president of the Salem Teachers Association at the group's annual election meeting at Bush School Tuesday afternoon.

Merrill succeeds Harry Mohr of Leslie Junior High School.

Other officers elected Tuesday were Fred Rugh of Parrish Junior High, vice president; Mrs. Dorothy Barlow of Highland School, secretary; and Charles Cray of Parrish, treasurer. Elected to the group's important economic welfare committee were Mrs. Dorothy Merriam of Bush and Roger Pederson of Salem Senior High.

Law School At WU Plans Open House

The student body of Willamette University School of Law will hold an open house Thursday, 9 a.m. to 4 p.m., for pre-law students in various colleges throughout the area. It is announced by Seward Reese, dean of the local law college.

Students from 21 colleges have been invited.

The program is under the direction of George Gant, first-year student from Coos Bay. Assisting the chairman are William Whitney, Portland, and Walter Stauffacher, Salem.

Registration will be held from 9 to 9:30 a.m., with a dean's hour being held at 9:30 a.m. A third-year course, trial practice, will be open to visitors at 10:40 a.m.

Roy F. Shields, Portland attorney, will speak to college representatives at noon. Luncheon is scheduled at Baxter Hall at 1 p.m.

A moot court, with members of the Willamette College of Law participating, will be held at 2 p.m. A coffee hour, from 3 to 4 p.m., will close the day's events.

Death Claims Roy L. Adams Of Quinaby

Statesman News Service
QUINABY—Roy L. Adams, resident of Quinaby community for the past 10 years, died at his home Tuesday at the age of 76 years following an illness of the past week.

Services will be announced later by the Clough-Barrick Company. Adams was born in Arkansas, Dec. 14, 1876. He moved from Arkansas to Oklahoma where he remained at McAllister until moving to Salem. He first moved to the Hazel Green district and eight years ago moved to Quinaby. He was a member of the Baptist Church.

Survivors include the widow, Pearl Adams, Salem; daughters, Mrs. Rose Phillips, Brooks, and Mrs. Louise Bryant, Antioch, Calif.; sons, Louis and Frank Adams, both of Salem; Kenneth Adams, Tillamook, Ore.; and Clifford Adams, San Francisco; sister, Mrs. Maude Tucker, of Oklahoma; brothers, Charlie Adams, of Oklahoma; Lonnie Adams, of California; Dossie Adams, of Arkansas; and Brady Adams, Pontiac, Mich.; and 10 grandchildren.

Test Drillings Underway at M&F Location

Work of sinking test drillings began this week on the site soon to house a new Meier & Frank store building on the north edge of downtown Salem.

After working Monday afternoon and Tuesday the crew is still on its first test hole at the site of the school administration office building. The drilling is being done by J. M. Janssen drilling company of Reedville under di-

rection of Dames & Moore, soil engineers.
Test holes will be sunk at various places on the block, said Sergio R. Zegers of Portland, engineer in charge. He said the testings are being made so that construction engineers will know what sort of soil they must reckon with in planning the store building.
Meanwhile Marion County Court

has not yet announced a moving date from the school building to the new courthouse. Work on counters and jury rooms has delayed plans for turning over the new courthouse by the contractor to the county on May 1.

The \$2,000,000 building probably will not be ready for occupancy until mid-May.

Eugene Man Climbing 6th Highest Peak

EUGENE (AP)—William Unsoeld, 27, former Eugene resident, is a member of the California climbing expedition now trying to ascend Mt. Makalu in the Himalayas. It is listed as the world's fifth highest peak.

A graduate of Eugene High School, he later went to Oregon State College. He has done extensive climbing in this country, and has climbed in the Swiss Alps.

Wife of Cabinet Official Dies

WASHINGTON (AP)—Mrs. Ethel Lillian Williams, wife of Under Secretary of Commerce Walter Williams, died Tuesday in George Washington University Hospital.
It was learned that Mrs. Williams died on the operating table while undergoing an exploratory operation for a tumor. She was 59.
Mrs. Williams and her husband lived in Seattle before they came to Washington early in the Eisen-

hower administration.
She was born at Florence, Colo., and was graduated from the University of Denver. She taught school at Denver and in Puerto Rico.
She married Williams in 1931. They had no children.
Three out of four U. S. auto accidents occur on dry pavement in clear weather.

A cordial invitation is extended to all PTA members to visit Roberts Bros. during their stay in Salem.

Roberts Bros.

340 Court Street

APRIL FURNITURE CLEARANCE

Spring time is savings time. We've crossed prices off all the way down the board . . . you'll find genuine savings in every department . . . you'll find items you've always wanted . . . now at greatly reduced prices. Shop Roberts Now . . . and Save.

No Down Payment On our approved credit, 24 months to pay.

We Give and Redeem *S.N.* Green Stamps

FURNITURE

Dining Room

Early American Maple drinks Beautiful piece for hall, kitchen or dining room buffet; can be also used as planter. **\$139⁹⁵**
Regular \$159.95. NOW

Hutch desk, provincial maple. Dish or nicknacks above, desk below. Copy of very old one! **\$149⁹⁵**
Regular \$169.95. NOW

Large, solid Mahogany, china cupboard, gleaming rich dark Mahog- **\$239⁹⁵**
any. Regular \$279.95. NOW

Closeout of this lovely solid Cherry dining group: Hutch, China, open, grooved shelves. Lined silverware drawer. **\$259⁹⁵**
Regular \$299. NOW

Large drop leaf table, solid Cherry, Swirl legs, opens to 96". Two 12" leaves. **\$139⁰⁰**
Regular \$179.00. NOW

Two arm chairs, Cherry. **\$34⁹⁵** each
Regular \$44.95. NOW

Four side chairs, Cherry. Nice large chairs, comfortable thick padded seats, attractive striped cover. **\$14⁹⁵** each
Regular \$22.95. NOW

One only Buffet, solid Birch discontinued style of famous line. **\$179⁹⁵**
Regular \$206.95. NOW

Mahogany breakfast desk secretary. Hand-tooled leather top, beautiful hand rubbed finish. A truly lovely piece. **\$289⁹⁵**
Regular \$329.95. NOW

Occasional Tables

One only end table. Mahogany, handrubbed finish perfect matching woods. **\$29⁹⁵**
Regular \$45.00. NOW

One lovely Mahogany whatnot, 4 1/2 feet high, deep shelves, will display your treasures effectively! See this! **\$19⁹⁵**
Regular \$36.95. NOW

One only early American coffee table by "Buck's Country"! Drop leaf **\$34⁹⁵**
sides. Regular \$69.95. NOW

One round coffee table. Maple. **\$29⁹⁵**
Regular \$37.95. NOW

Two modern lined Oak step tables. Smart styling, handrubbed finish. **\$19⁹⁵**
Regular \$32.50. NOW

Glass topped round cocktail table with light under glass; an unusual piece for a special spot in your home. **\$19⁹⁵**
Regular \$39.95. NOW

Entire Group Marble Top

Victorian Tables

Solid Mahogany. Hand carved. True reproductions greatly reduced.

LAMP TABLES **\$69.95**
Regular \$82.50
CIGARETTE TABLES **\$24.95**
Regular \$39.95
SIDE TABLES **\$69.95**
Regular \$94.50
SIDE TABLES **\$59.95**
Regular \$74.50
SIDE TABLES **\$39.95**
Regular \$59.50



SAVE! STORE



REDUCTIONS!

35% to

Two end tables in Cherry. Modern styling. Regular \$34.95. NOW **\$19⁹⁵**

One matching cocktail table. **\$32⁹⁵**
Regular \$64.95. NOW

One fine lamp chest by Brandt. Brown Mahogany. Four drawers. **\$69⁹⁵**
Regular \$99.95. NOW

Two leather top lamp tables. **\$24⁹⁵**
Mahogany. Regular \$34.50. NOW

Nest 'O Tables in modern lined **\$22⁹⁵**
Oak. Regular \$44.95. NOW

DESKS

Hand tooled leather top kidney desk in Mahogany. Regular \$119.95. **\$89⁹⁵**
NOW

Large six drawer desk in Walnut or lined Oak finish. **\$44⁹⁵**
Regular \$79.95. NOW

SERVING CARTS

Serving cart, Lined Oak. Green simulated leather top. **\$14⁹⁵**
Regular \$22.95. NOW

Serving carts, modern style, large casters for easy rolling. **\$24⁹⁵**
Regular \$44.95. NOW

BOOKCASES

For that odd corner for planters. For the child's room for toys. For the playroom for records. For the livingroom divider or just a bookcase. Closing out these particular styles and finishes at 1/2 price. Measure your space and see these!

Davenport and chair by green, deep pile frieze; cushions. Regular \$284.95. NOW

Davenport and chair by beige scroll frieze. Regular \$319.95. NOW

Two piece sectional, fully rose beige nylon, covered, hardwood frame, custom. Regular \$279.95. NOW

Modern sofa and chair, in back and gold. Regular \$269.95. NOW

Lovely custom made sofa, button tufted arms. Regular \$249.95. NOW

Revolving chair by Bill, cover. Regular \$98.95. NOW

Two only Revolving Chairs, moss trim, heavy Channel back. Regular \$145.95. NOW

Early American three-piece print cover, ruffled, ored. Regular \$569.95. NOW

Reclining chair. That chair for perfect comfort or playroom. Beige frieze. Regular \$79.95. NOW

Club chair. Brass nail tuft, like "plastic". Perfect in den. Just wipe off with tom made chair. Regular \$132.50. NOW

NO DOWN PAYMENT on our approved credit 24 months to pay!