

# Group to Study Raindrop Size

**SOUTH BEND, Wash.** — Now they're going to measure the size of raindrops.

It's a phase of the Weather Bureau research project in which scientists have been studying the effect of cloud seeding on rainfall.

Machines called raindrop spectrophotographs have been installed at Olympia, Hoquiam and at Elkhart Park, between Raymond and South Bend. They operate by deflecting raindrops into a metal box where they fall on a sheet of sensitized paper which can be developed like a photographic print for a permanent record.

The reason? Ferguson Hall, project director, says the information should be valuable for "quantitative measurement of rainfall by radar, the rate of run-off of precipitation and the effect of drop size on soil erosion."

There is evidence that the Hereford breed of beef cattle was produced work animals in early-day England.

## Salem Obituaries

**Edward Charles Clark**  
In McMinnville, Oregon, January 11. Survived by wife, Helen Clark, 2328 Maple Avenue, Salem. Services will be held Friday, Jan. 15 at 2:00 p.m. at the Knapp Funeral Home, Vancouver, Wash. Interment at Vancouver, Wash.

**Baby Boy Earls**  
Infant son of Mr. and Mrs. Elmer Earls, Brooks at a local hospital, Jan. 12. Survived by mother, Mrs. E. Earls, 104 1/2 N. 10th St., Salem. Services will be held at 2:00 p.m. Rev. Brooks H. Moore officiating. Interment at City View Cemetery.

**William F. Gatchell**  
Late resident of 3255 S. Corn 1st St. at a local hospital Jan. 12 at the age of 68. Survived by wife, Bertha C. Gatchell, Salem; son, Frank Gatchell, Jefferson; brother, Leslie W. Gatchell, St. Albans. Announcement of services later by the Howell-Edwards Chapel.

**Mrs. Minnie Mary-an Hadley**  
At the family residence in Brooks, Ore., Jan. 12. Survived by husband, Ursel W. Hadley, Brooks; mother, Mrs. Ella McCaffery, Salem; sister, Mrs. William Bechtel, Salem; brothers, Frank and Pete McCaffery, both in Salem; Joe, McCaffery, Clatskanie, Ore.; and three nephews. Recitation of rosary Tues. Jan. 12 at 8:00 p.m. Funeral services Wed. Jan. 13 at 10:00 a.m. at the Howell-Edwards Chapel. Concluding services at St. Barbara Cemetery.

**Ottar Johnson**  
Late resident of 1505 N. 17th at a local hospital Jan. 12. Survived by wife, Helen Johnson, Salem. Announcement of services later by Clough-Barrick Co.

**Cora Belle Lovell**  
In this city Jan. 11 at the age of 72. Mother of Mrs. Helen I. Becke, Salem; Dow Lovell, Salem; Clinton Lovell, Portland; James Lovell, Hermiston; and six other children. Services will be held in the W. T. Riddion Chapel, Wednesday, Jan. 13, at 3:00 p.m. Rev. Louis E. White officiating.

**Glenn Morgan**  
Late resident of 1704 Claxter Rd. at a local hospital Jan. 11. Brother of Richard L. Morgan, Salem; Fred Morgan, Salem; Fern Morgan, Salem; Mrs. J. H. Cowan, Shaunavon, Sask., Canada. Also survived by 7 nephews. Services will be held in the Howell-Edwards Chapel, Wednesday, Jan. 13 at 3:00 p.m. Rev. A. G. Jamieson officiating.

**Mrs. Jessie M. Redfern**  
Late resident of 325 Union St. at a local hospital Jan. 11. Survived by sisters, Mrs. Florence Stott, Beloit, Wis.; Mrs. Laurel Frederick, Bend, Ore.; and Mrs. Florence Jewett, Beaverton, Ore. Services will be held in the Clough-Barrick Chapel, Wed. Jan. 13 at 3:00 p.m. Rev. W. H. Lyman, officiating. Shipments will be made to Galena, Ill. for interment.

**Robert Renfrew**  
Late resident of Rt. 2 Box 25, Turner at a local hospital Jan. 12 at the age of 80 years. Announcement of services later by the Howell-Edwards Chapel.

**Larene Snider**  
Late resident of 3730 Market St. at a local hospital Jan. 11 at the age of 49 years. Survived by husband, Larry Snider, Salem; father, Henry Snider, Salem; sister, Mrs. Eleanor Mellay, Salem; brother, Albert Boden, Dorchester, Neb.; Ben Boden, Crete, Neb. Services will be held in the Howell-Edwards Chapel, Wednesday, Jan. 13 at 3:00 p.m. Rev. A. G. Jamieson officiating.

**William White**  
Late resident of 103 Marion St. Jan. 11. Survived by wife, Hazel White, Salem. Announcement of services later by Virgil T. Golden Co.

**William Harrison Wilson**  
At Coos Bay, Ore., Jan. 9. Late resident of Coos Bay, Ore. Survived by son, Forrest Wilson, Portland; Boyd O. Wilson, Los Angeles, Calif.; niece, Mrs. Irene Ammann, Salem; and nephew, L. O. Thomas, Coos Bay. Grandchildren: Mrs. Nancy Holmes, Portland; 2 great grandchildren, David and Diana Holmes, Portland. Services will be held in the Virgil T. Golden Chapel, Wed. Jan. 13 at 2:00 p.m. Interment City View Cemetery. Rev. Donald Payne officiating.

**Arthur Fred Ziegenhagel**  
At Los Angeles, Calif., Jan. 11. Late resident of 2410 Laurel Ave., Salem. Survived by wife, Gertrude Ziegenhagel, Salem; sisters, Miss Inez Ziegenhagel, Salem; Mrs. Betty Lou Carroll, Monroe City, Missouri; son, Alden Ziegenhagel, Salem; father, Fred Ziegenhagel, Lehr, N. Dakota; sisters, Mrs. Alma Dawson, Los Angeles, Calif.; Mrs. Jacob Flechtner, Lehr, N. Dakota; brothers, Jake Ziegenhagel, Nevada City, Calif.; David Ziegenhagel, Lehr, N. Dakota; two grandchildren. Services will be held in the Virgil T. Golden Chapel, Tuesday, Jan. 19 at 2:00 p.m. Interment at City View Cemetery. D.30.6.13.20.27

# New York Stock Quotations

By The Associated Press		Homestake Mining Co.	
Admiral Corporation	19 3/4	International Harvester	28 3/4
Allied Chemical	74	International Paper	56 1/4
Alice Chemicals	46	Johns Manville	65 3/4
American Airlines	11 1/4	Kaiser Aluminum	26 3/4
American Power & Light	—	Kennecott Copper	65 3/4
American Tel. & Tel.	156 3/4	Libby, McNeill	9 1/4
Anaconda Copper	60 3/4	Lockheed Aircraft	26 3/4
Atchafalpa Railroad	31 1/4	Loew's Incorporated	13 1/4
Bethlehem Steel	94 3/4	Long Bell A	23
Boeing Airplane Co.	50 3/4	Montgomery Ward	57 3/4
Borg Warner	48 1/4	Nash Kelvinator	17 3/4
Burroughs Adding Machine	16 1/4	New York Central	18 3/4
Canadian Pacific	—	Northern Pacific	55
Caterpillar Tractor	22 1/4	Pacific American Fish	7 3/4
Celanese Corporation	48 3/4	Pacific Gas & Electric	39 3/4
Chrysler Corporation	19 1/4	Pacific Tel. & Tel.	115
Cities Service	59 3/4	Packard Motor Car	3 1/2
Consolidated Edison	79 3/4	Pennsylvania (J. C.) Co.	77 1/2
Consolidated Vultee	42 1/4	Pennsylvania K.R.	17 1/2
Crown Zellerbach	18	Pepsi Cola Co.	14 1/4
Curtiss Wright	7 3/4	Phileo Radio	28 3/4
Douglas Aircraft	80 3/4	Radio Corporation	26 1/2
Eastman Kodak	104 3/4	Rayonier Incorp.	48
Emerson Radio	47 3/4	Rayonier Incorp. Pfd.	52
General Electric	10 1/4	Republic Steel	48
General Foods	88 3/4	Reynolds Metals	49
General Motors	59 3/4	Richfield Oil	39 1/4
Georgia Pac. Plywood	11 1/4	Safety Stores Inc.	49
Goodyear Tire	53 1/4	Seal Paper Co.	69 3/4
		Sears Roebuck & Co.	35
		Socony-Vacuum Oil	36 3/4
		Southern Pacific	35
		Standard Oil Calif.	53 1/4
		Standard Oil N. J.	73 3/4
		Studebaker Corp.	21 3/4
		Swingline Mining	7 3/4
		Swift & Company	43 3/4
		Transamerica Corp.	28
		Twentieth Century Fox	20 1/2
		Union Oil Company	39
		Union Pacific	108 1/2
		United Airlines	45 3/4
		United Aircraft	41 3/4
		United Corporation	5 1/4
		United States Plywood	24 3/4
		United States Steel	39 3/4
		Warner Pictures	13 3/4
		Western Union Int'l.	40 1/2
		Westinghouse Air Brake	24 3/4
		Westinghouse Electric	51 3/4
		Woolworth Company	43 3/4

# Hoy Director Of Fisheries, Dates Decided

**PORTLAND** — Complaints from upriver fishermen led the Oregon Fish Commission and the Washington State Fisheries Bureau to decide Tuesday to open both the lower and middle stretches of the Columbia River to commercial fishing on April 30.

State biologists earlier had recommended that the river below Bonneville Dam be opened for commercial fishing on April 30, but that the upriver opening be delayed until May 13.

The separate opening dates were used last year, and upriver fishermen complained it ruined their season.

The spring commercial fishing season will close May 27 for both stretches of the river.

Biologists had recommended the separate dates in an attempt to increase the number of fish that get to spawning grounds.

M. T. Hoy was named acting director of fisheries by the Oregon commission. He replaces Arnie J. Suomela, who resigned to become assistant director of the U. S. Fish and Wildlife Service.

Hoy, who has been with the commission since 1923, has served as commission secretary for the past few years.

# Ottar Johnson, Ex-Federal Employee, Dies

Ottar Johnson, 57, of 1505 N. 17th St., former employe of the U. S. Forest Service and Salem resident since last July, died Tuesday morning in a local hospital. He had been in poor health for some time.

Johnson was born in Norway April 17, 1896 and came to this country while a young man, first living in North Dakota.

He later lived in Washington and then Juneau, Alaska where he was sent with the U. S. Forest Service. He was with the service some 18 years.

Johnson came to Salem from Alaska last July.

Surviving are his widow, the former Helen Peterson, to whom he was married in 1936 in Ketchikan, Alaska; two daughters, Alice and Mary Johnson, both of Salem; and a sister and two brothers in Norway.

Funeral services will be announced later by Clough-Barrick Co.

**NOTICE OF APPOINTMENT**  
NOTICE IS HEREBY GIVEN that the undersigned has been duly appointed by the Circuit Court of the State of Oregon for the County of Marion, Probate Department, as administrator with the will annexed of the estate of WILLIAM JAMES BERNARD, deceased, and that he has qualified as such administrator. All persons having claims against the estate of said decedent are notified to present the same, duly verified, at 412 Pioneer Trust Building, Salem, Oregon, within six months from the date of this notice. Dated this 28th day of December, 1953.

OTTO R. SKOPIL JR.  
Administrator with the will annexed of the estate of WILLIAM JAMES BERNARD, deceased.  
412 Pioneer Trust Building, Salem, Oregon. D.30.6.13.20.27

# Portland Produce

**PORTLAND** — Butterfat — Tentative, subject to immediate change—Premium quality, maximum to 35 to one per cent acidity, delivered in Portland, 66-71 lb; first quality, 66-69; second quality, 64-67. Valley routes a and country points 2 cents less.

Butter—Wholesale, f.o.b. bulk cubes to wholesalers—Grade AA, 83 score, 66 1/2 lb; 92 score, 65 1/2; 80 score, 64 1/2; 89 score, 62.

Cheese—Selling price to Portland wholesalers—Oregon singles, 42 1/2-45 lb; Oregon 5-lb loaf, 48 1/4-51.

Eggs—To wholesalers—Candied eggs containing no loss, cases included. f.o.b. Portland—A grade, large, 51 1/2-55 1/2; A medium, 50 1/2-54 1/2; A small, 47 1/2-48 1/2.

Eggs—To retailers—Grade AA, large, 57-58; A large, 55-57; A medium, 53-54; A small, 49-50. Cartons 3 cents additional.

Live chickens—No. 1 quality, f.o.b. plants—Fryers 27; roasters, 27; heavy hens, 25-26; light hens, 15-17; old roosters, 14-15.

Rabbits—Average to growers—Live white, 3 1/2-5 lbs, 19-21; 5-6 lbs, 16-20; old does, 10-12, few higher. Fresh dressed fryers to retailers, 55-57; cut up, 59-63.

Wholesale dressed meats:  
Beef, steers, choice, 500-700 lbs, 39.00-41.00; good, 36.00-40.00; commercial, 32.00-37.00; utility 29.00-33.00; commercial cows 28.00-30.00; utility 25.00-28.00.

Beef cuts choice steers—Hind quarters, 47.00-52.00; rounds, 43.00-48.00; top loins, trimmed, 73.00-80.00; triangles, 29.00-34.00; fore-quarters, 31.00-36.00; chucks, 37.00-40.00; ribs, 55.00-62.00.

Pork cuts—Loins, choice, 8-12 lbs., 62.00-64.00; shoulders, 16-20 lbs., 49.00-44.00; spareribs, 48.00-54.00; fresh hams, 10-14 lbs., 60.00-65.00.

Veal and calves—Good-choice, all weights, 34.00-43.00; commercial, 29.00-37.00.

# Stocks and Bonds

(Compiled by The Associated Press)

STOCK AVERAGES		BOND AVERAGES	
Jan. 12	Jan. 11	Jan. 12	Jan. 11
Indust. Rails	15	10	10
Util. Stocks	15	10	10
Net change	-0.9	A.1.9	A.1.1
Tuesday	144.8	78.8	33.6
Prev. day	145.7	79.7	34.5
Month ago	143.0	79.2	35.3
Year ago	146.6	79.2	35.3
Month ago	142.9	78.8	35.4
Year ago	148.1	81.4	36.8

# Stock Market Stands Firm

**NEW YORK** — The stock market with a fair showing of firmness Tuesday was able to reverse a four-day losing trend.

The Associated Press average of 60 stocks advanced 80 cents at 108.80. Monday it was down 60 cents.

The railroad component of the average made the best showing with a rise of 1.00. The industrials were up 90 cents, and the utilities firmed 10 cents.

Only 1,000 individual issues were traded, lowest since mid-November and 27 under Monday's total. However, 581 stocks of that total advanced and 229 declined with 14 new highs and 8 new lows for 1953-54 touched during the session.

Volume came to 1,250,000 shares as compared with 1,220,000 shares

# Salem Market Quotations

(As of late yesterday)

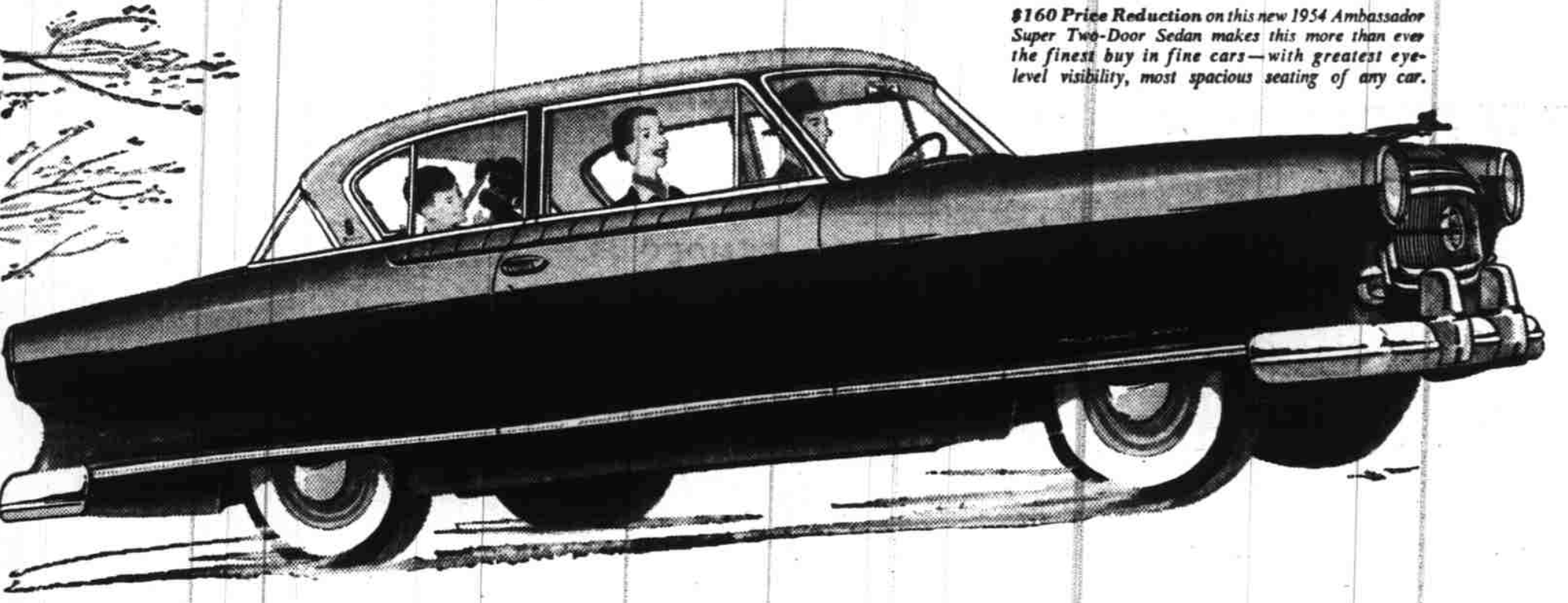
BUTTERFAT		EGGS—(Buying)	
Premium	No. 1	Wholesale (price range from 6 to 7 cents over buying price)	POULTRY
79	84	Large AA	44
81	86	Large A	42
83	88	Medium AA	41
85	90	Medium A	39
87	92	Colored Hens	36
89	94	Leghorn Hens	35
91	96	Colored Fryers	34
93	98	Old Roosters	33
95	100		

To Insure Your HOME With HUGGINS Ph. 3-9119

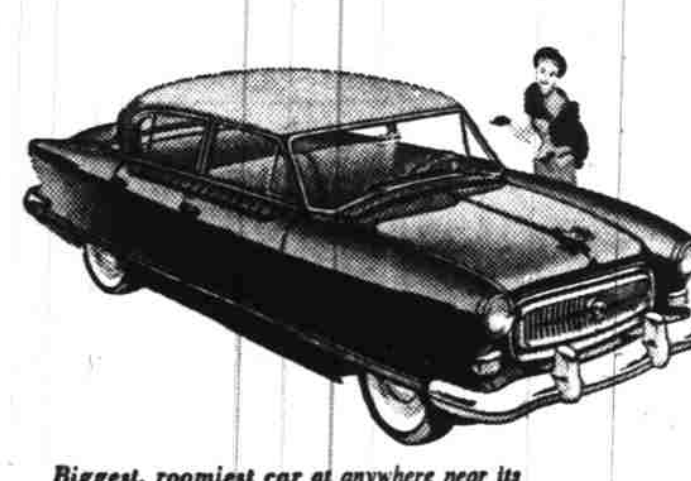
Get Relief QUICKER From Your Cough Due to a Cold FOLEY'S HENRY & TAR COUGH COMPOUND

New In Continental Beauty! New In Performance! New In Travel Features!

# Nash Prices As Much As \$160 Lower!



\$160 Price Reduction on this new 1954 Ambassador Super Two-Door Sedan makes this more than ever the finest buy in fine cars—with greatest eye-level visibility, most spacious seating of any car.



Biggest, roomiest car at anywhere near its price, the Nash Statesman now features the new twin-carburetor Dual Powerflyte Engine with famous Statesman economy. See and price the stunning new Four-Door Super Sedan.

Want Rambler smartness, handling ease and economy in a spacious new family sedan? The new Rambler 4-door sedan complete with custom radio and Weather Eye, now in a new lower-priced Super model!

Yes, the new 1954 Nash is now easier than ever to buy. Models for every pocketbook and driving need—all brilliantly new, all built with Nash quality throughout, all priced to be the greatest values ever offered!

Come see them all! See the new advanced continental styling. See the new, exclusive Nash "travel bonuses". Try the new optional "Power Package"—Power Steering, Power Brakes, Power-Lift Windows, Hydra-Matic Drive. Test the new high-compression performance.

Now's the time to trade for your new Nash. Bring your old car in and drive home in a new 1954 Nash Airflyte—the "double lifetime" car—the value leader of the motorcar industry.

## Only Nash Offers You These Travel Features

Reclining seats and Twin Beds! No more "aching back" for driver or passengers. At night, seats can become Twin Beds. Optional at small extra cost.

Extra safety for you! With Unitized Airflyte Construction, body-and-frame are welded into one unit to give a "double lifetime" of service.

World's finest heating, ventilating—Weather Eye Conditioned Air System is safer, takes in fresh, clean air above the hood (see arrow in picture).



# New 1954 Nash Airflytes

Nash Motors, Division Nash-Kelvinator Corporation, Detroit, Mich. AMBASSADOR • STATESMAN • RAMBLER Built With A "Double Lifetime" ... Your Safest Investment Today ... Your Soundest Resale Value Tomorrow

# MARION MOTORS

Phone 3-9286 333 Center Street Salem, Oregon

**WHEN IT RAINS IT POURS**

Any and all persons claiming adversely the mining ground so here-in described for which application for patent has been made, are hereby notified that unless their adverse claims are duly filed according to law, with the Manager of the Land Office at Portland, Oregon, they will be barred by the provisions of said law.

D.14.23.25. A. J. 13.20.27. F.3.10