

This week at **SAFEGWAY**...

Take Advantage of EXTRA Savings on Candy Bars & Gum, by the Box!

Candy Lovers will be pleased to know that all the famous Candy Bars and Gums head the list of values this week at Safeway. Yes, **EXTRA** savings are now being offered by the box. Pick up your favorites and enjoy the convenience of having them handy for the lunch box, etc.

YOUR CHOICE OF THESE FAMOUS BRANDS, & MORE

- | | | |
|--|--|---|
| 5c BARS | 10c BARS | GUM |
| <ul style="list-style-type: none"> • HERSHEY • NESTLES • PLANTERS • BABY RUTH • OH-HO-HO • MILKY WAY • SNICKERS | <ul style="list-style-type: none"> • MOUNTAIN BARS • UNO BARS • HERSHEY • BAKERS • RAFFLE • MOUNDS • ALMOND JOY | <ul style="list-style-type: none"> • WRIGLEY • BEECHNUT • CHICLETS • ADAMS • DENTYNE • BREMAN • BEECHIES |

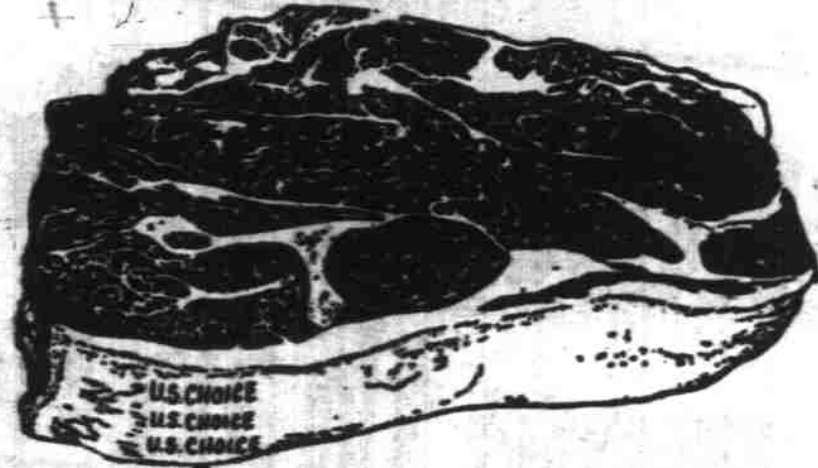


Stock up on your favorites—no limit

Safeway Beef Pot Roasts

Here is a truly exceptional Value "U. S. CHOICE" or "U. S. GOOD" beef Lb.

49¢



MEATY BLADE CUTS

- | | | |
|------------------------|------------------------------------|------------|
| Beef Short Ribs | "U. S. Choice" or "U. S. Good" lb. | 38¢ |
| T-Bone Steaks | "U. S. Choice" or "U. S. Good" lb. | 95¢ |
| Sirloin Steaks | "U. S. Choice" or "U. S. Good" lb. | 79¢ |
| Leg O' Lamb | Well Trimmed lb. | 69¢ |
| Lamb Shoulder | Square Cut lb. | 49¢ |
| Lamb Breast | For Stew lb. | 19¢ |
| Sliced Bacon | Standard lb. | 53¢ |
| Minced Ham | Slic. lb. 49¢
In the Pc. lb. | 45¢ |
| Fresh Fryers | Ready for the pan lb. | 59¢ |

Your Assurance Of Quality!
Look for the U. S. Gov't. Grade Stamp on every cut of Beef from Safeway!

Although it is no longer required by law—Safeway will continue to bring you beef bearing U. S. Gov't. Grade marks. We will continue to handle "U. S. CHOICE" and "U. S. GOOD" grades only. These top grades provide the eating satisfaction we know our customers have a right to demand.

Chinook Salmon

FRESH FROM THE COLUMBIA RIVER—BRIGHT COLOR—FIRM FISH!

- | | | | |
|-------------------------|---------|----------------------|---------------|
| ● FRESH SMELT | Lb. 19¢ | ● FRESH CRABS | Whole Lb. 39¢ |
| ● HALIBUT STEAKS | lb. 59¢ | ● WHITING | lb. 29¢ |
| | | ● OYSTERS | Pl. 59¢ |

- GRAPEFRUIT JUICE, Town House 48-oz. 29¢
- PRUNE JUICE, Sunsweet 12-oz. bot. 15¢
- TOMATO JUICE, Sunny Down 48-oz. can 27¢
- COMFORT TOILET TISSUE 4 Rolls 39¢
- CHIFFON TOILET TISSUE 2 Rolls 27¢
- KOTEX SANITARY NAPKINS 2 for 77¢
- MODESS SANITARY NAPKINS 2 for 77¢
- ZEE FACIAL TISSUES, 400 count 25¢
- ZEE WAX PAPER, 125-foot roll 25¢
- TOOTH PASTE, Peps'd'n't Chlorodent ea. 69¢
- COLGATE DENTAL CREAM, Econ. pk. 63¢
- IPANA TOOTH PASTE, Economy pk. 63¢
- TOOTH POWDER, Colgate Amm., 4-oz. 47¢
- PILGRIM ASPIRIN, 100-count pk. 19¢
- ALKA SELTZER, Alkaline Large 54¢
- *SILK & SATIN LOTION, Med. Size 49¢
- WOODBURY SHAMPOO, each 29¢
- PLASTIC BANDAGES, Cured 27 for 39¢

- BORENE SOAP, Granulated 23-oz. pk. 29¢
- ORANGE SLICES, Roxbury Candy 1-lb. 25¢
- CHOCOLATE DROPS, Roxbury 1-lb. pk. 33¢
- FILED MINTS, Roxbury 8-oz. pkg. 15¢
- CHOCOLATE CARAMELS, Roxbury 8-oz. 25¢
- KITCHEN CRAFT FLOUR 10-lb. Sack 95¢
- KITCHEN CRAFT FLOUR 25-lb. Sack \$2.17
- MAMMY LOU CORN MEAL 2 1/2-lb. pkg. 26¢
- SUZANNA PANCAKE FLOUR 3 1/2-lb. 45¢
- DRIED BLACK FIGS 12-oz. pkg. 23¢
- DRIED PEACHES, Glenview 15-oz. 35¢
- DRIED APRICOTS, Glenview 12-oz. 53¢
- SUNMAID RAISINS 15-oz. pkg. 21¢
- SEEDED RAISINS, Vinocrest 15-oz. pkg. 21¢
- DRIED PRUNES, 40-50's 2-lb. pkg. 55¢
- SKYLAKE BREAD, Variety 1-lb. Loaf 20¢
- MRS. WRIGHT'S BREAD 1 1/2-lb. Loaf 23¢
- ROYAL SATIN SHORTENING 8-lb. can 87¢
- FRIKERS DOG FOOD Can 16¢

SPINACH

Gardenside brand

2 No. 2 1/2 Cans **29¢**

- | | | | |
|-----------------|--------------|-------------|-------------------|
| Fancy Peas | Sugar Belle | No. 303 Can | 17¢ |
| Tomatoes | Kingsgate | 303 Can | 19¢ |
| Oyster Stew | Willapoint | 10 1/2 oz. | 29¢ |
| Fresh Milk | Quart Carton | | 23¢ |
| 'AA' Large Eggs | Dozen | | 58¢ |
| Butter | Montrose | Pound | 80¢ |
| Butter | Spring House | Pound | 75¢ |
| Butter | Shady Lane | Pound | 73¢ |
| Nob Hill Coffee | 1 lb. | 80¢ | 2 lb. 1 50 |
| Airway Coffee | 1 lb. | 78¢ | 2 lb. 1 55 |

HONEY

Bloux Bee—Creamed

12-oz. Carton **25¢**

Prices Effective through Sunday, March 1. No Sales to Dealers.

- | | | | |
|---------------------|---------------------|---------------|------------------|
| Pineapple | Aola Crushed | No. 303 can | 19¢ |
| Pear Halves | Highway brand | No. 2 1/2 can | 25¢ |
| Orange Juice | Scotch Treat—frozen | 2 8-oz. cans | 25¢ |
| Sunnybank Margarine | | 2 Pounds | 49¢ |
| Pillsbury Cake Mix | Kind | 3 Pkgs. | \$1.00 |
| Cheese Foods | Velveeta | 2-lb. Loaf | 89¢ |
| Tea Timer Crackers | | 1-lb. box | 25¢ |
| Noodle Dinner | Starkist—with Tuna | 15 oz. | 31¢ |
| Maine Sardines | Tempest | 3 cans 25c | Dozen 95¢ |
| Mince Meat | Dude Ranch | 24-oz. jar | 29¢ |
| Tomato Catsup | Taste Tells | 2 Bot. | 25¢ |

BANANAS

Not Chalky or Waxy—everyone firm, golden and ripe. Nice slices!

2 Pounds 35¢

POTATOES

U. S. No. 1 Lb. **\$1.29**

CAULIFLOWER

Solidly Formed lb. **19¢**

- | | | | | | | | |
|---------------|-------------------------|-----------|------------|------------|-------------|------------|----------------------|
| Apples | Newtowns | Lb. | 10¢ | Celery | Crisp Green | Lb. | 14¢ |
| Apples | Schoolboy Wine-scaps | 5-Lb. Bag | 59¢ | Gr. Onions | 1 Bun. | | 15¢ |
| Navel Oranges | 5-Lb. Bag | | 39¢ | Lettuce | Heads | | 14¢ |
| Rhubarb | Hot House K-4cy. & Fcy. | Lb. | 19¢ | Turnips | White Meat | Lb. | 10¢ |
| Carrots | Golden-Smooth | Lb. | 10¢ | Potatoes | 10 Lb. | 59¢ | 25 Lb. \$1.45 |

Hear Dorothy Thompson at Salem High School, Wednesday, March 4 at 8:15 P. M. Tickets Available at Stevens & Son or Wills Music Store.

<h1>SAFEGWAY</h1>	White Magic Soap Granulated 23-oz. pkg. 22¢	White Magic Bleach Sole Bleach 1/2-Gallon 27¢	Purex Bleach Removes Stains 1/2-Gallon 29¢
-------------------	--	--	---