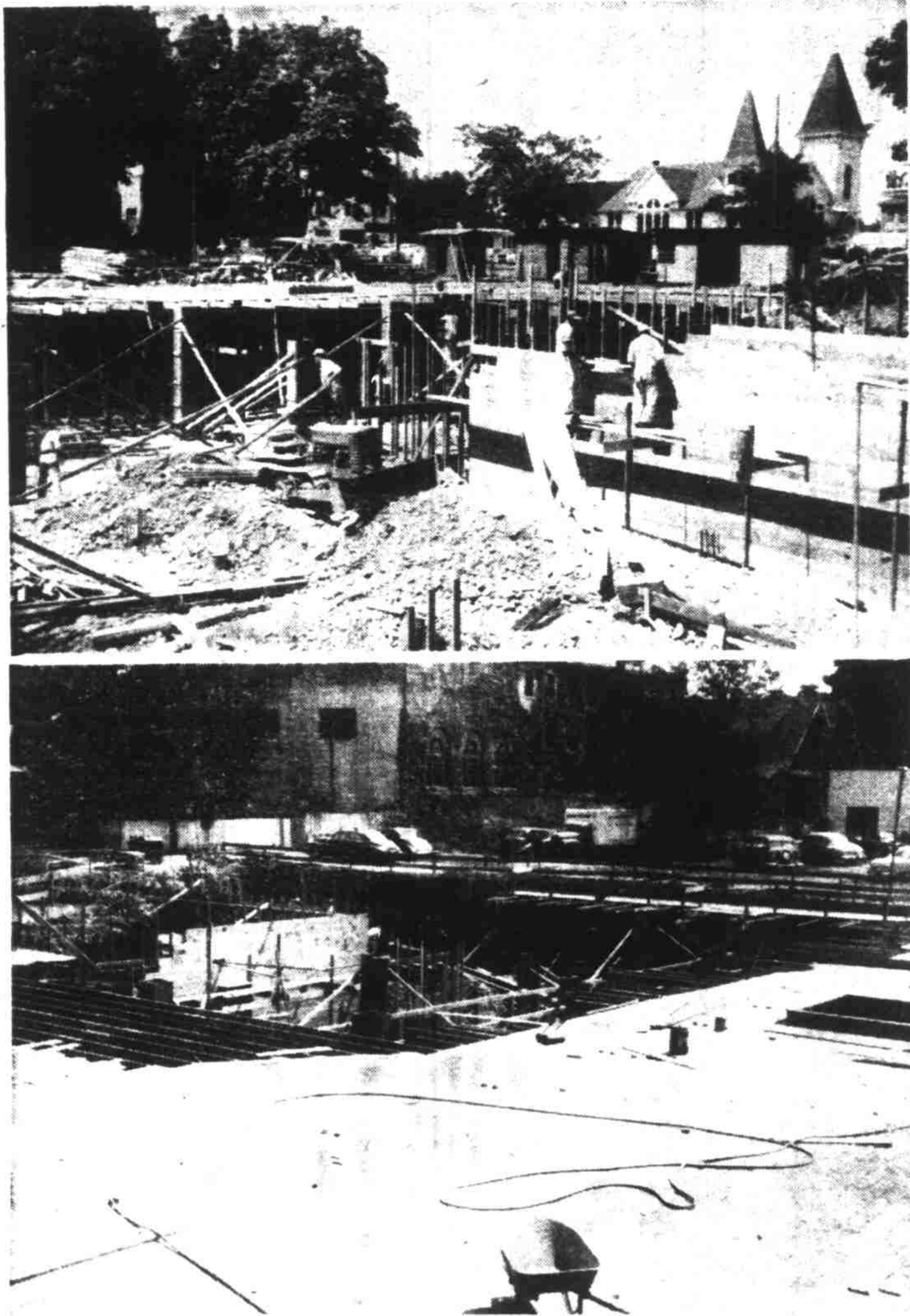


New Statesman Building Taking Shape



The first floor of The Oregon Statesman's new \$300,000 home is scheduled to be poured within a few days. Top photo shows basement supports being readied for concrete work, and lower photo portrays building of floor forms. Building in the background of lower photo is YMCA. The new building is to be erected on the southeast corner of North Church and Chemeketa Streets by Vlesko & Post, contractors.

New York Stock Quotations

NEW YORK STOCKS (AP)		Swift & Company	
Thursday's Closing Quotations:		Transamerica Corp.	31 3/4
Admiral Corporation	26 3/4	Twentieth Century Fox	15 1/4
Allied Chemical	75 1/2	Union Oil Company	42 3/4
Allis Chalmers	51	Union Pacific	115 1/2
American Airlines	13 3/4	United Airlines	28
American Power & Light	28 3/4	United Aircraft	33
American Tel. & Tel.	154	United Corporation	5 1/2
American Tobacco	57 3/4	United States Plywood	29 1/2
Anaconda Copper	46 1/2	United States Steel	40 1/2
Atchafalpa Railroad	92	Warner Pictures	12 1/2
Bethlehem Steel	52 1/2	Western Union Tel.	39 3/4
Boeing Airplane Co.	34 3/4	Westinghouse Air Brake	26
Burrheads Adding Machine	17 3/4	Westinghouse Electric	39 1/2
California Packing	26 3/4	Woolworth Company	44 1/2
Canadian Pacific	35 3/4		
Caterpillar Tractor	56 3/4		
Cleaneese Corporation	42 1/2		
Chrysler Corporation	77 1/2		
Cities Service	102 1/2		
Consolidated Edison	34 3/4		
Consolidate Vultee	19 1/4		
Crown Zellerbach	87		
Curtiss Wright	8 1/2		
duPont de Nemours	88 3/4		
Eastman Kodak	44 1/4		
Emerson Radio	11 3/4		
General Electric	62 3/4		
General Foods	46 1/2		
General Motors	58 1/2		
Georgia Pac Plywood	18 1/4		
Goodyear Tire	46		
Homestake Mining Co.	36 3/4		
International Harvester	33 1/2		
International Paper	49 3/4		
Johns Manville	25 1/4		
Kennecott Copper	79 3/4		
Libby, McNeill	7 3/4		
Lockheed Aircraft	23 3/4		
Loew's Incorporated	12 3/4		
Long Bell A	39 3/4		
Montgomery Ward	64 3/4		
Nash-Kelvinator	19 3/4		
New York Central	19 1/2		
Northern Pacific	76 1/2		
Pacific American Fish	15 1/4		
Pacific Gas & Electric	34 3/4		
Pacific Tel. & Tel.	111		
Packard Motor Car	5		
Penny J. C. Co.	69 3/4		
Pepsi Cola Co.	10		
Philco Radio	32		
Radio Corporation	27 1/2		
Rayonier Incorp.	30 3/4		
Republic Steel	49 1/4		
Reynolds Metals	57		
Richfield Oil	70 3/4		
Safeway Stores Inc.	32 1/2		
Scott Paper Co.	56		
Sears Roebuck & Co.	56 1/4		
Secony-Vacuum Oil	38 3/4		
Southern Pacific	81 1/2		
Standard Oil Calif.	60 3/4		
Standard Oil N.J.	80		
Studebaker Corp.	37		
Sunshine Mining	9 1/4		

Veal—47c quality to 49-50c lb; good heavies 44-47c; others 32-38c.
Hogs—Lean blockers, 30-32c lb; sows light 24-25c.
Lambs—Best 46-48c lb.
Onions—50 lb sacks, Calif. Yellows, 2-3 lb, 2.00-2.50; White wax 4.50-7.50; Reds, mixed, 3.25-5.00.
Potatoes—New crop Calif. Long White, No. 1A, mostly 5.75-6.25 cwt; Boardman White Rose, No. 1A, 5.75-6.00 cwt.
Hay—U. S. No. 2 green alfalfa, 36.00-37.00 delivered car and truck lots f.o.b. Portland; delivered Seattle, 37.00-50.

Stocks and Bonds

Compiled by The Associated Press
STOCK AVERAGES
 July 16
 Ind Ralls Util St'cks
 Net change July 17 4 A.2 D.3
 Thursday 141.6 82.5 52.3 107.0
 Prev. day 142.3 82.9 52.1 107.0
 Week ago 140.1 82.1 51.9 106.1
 Month ago 138.0 82.7 51.8 105.4
 Year ago 128.2 60.8 48.5 92.0

BOND AVERAGES
 20 10 10 10
 Ralls Util Fr'gn
 Net change D.2 D.1 D.2 D.2
 Thursday 95.7 98.8 98.1 76.7
 Prev. day 95.8 98.9 98.2 76.9
 Week ago 95.8 98.9 98.3 76.7
 Month ago 96.1 98.9 98.6 76.5
 Year ago 94.2 99.0 99.2 72.5

Portland Livestock

PORTLAND (AP)—Thursday Cattle: Saleable 123; market moderately active, mostly steady; late Wednesday four loads mostly choice 1125-1242 lb fed steers 32.00-50; few commercial grass steers Thursday 28.20-30.00; odd light utility steers downward to 22.00; utility feeders, 21.50-24.00; canner-cutter cows 16.00-18.50; utility cows 19.99-21.00; young commercial cows, 23.00; cutter-utility bulls 21.00-26.00.

Calves: Saleable 25; market slow; few sales steady; good-choice vealers 30.00-33.00; commercial 23.00-28.00, cut-utility 14.00-25.00.

Hogs: Saleable 200; market active, fully steady choice No. 1 and 2 butchers 180-235 lbs 24.50-75; small lot 24.85; choice 260-325 lbs 22.00-23.00; utility 140-170 lbs 21.50-23.50; choice 350-565 lb sows 18.00-20.00; choice light feeder pigs saleable around 22.00.

Sheep: Saleable 400; holdover 235; market slow; steady to 50 cents lower; feeding lambs at full decline; good-prime spring lambs 25.00-30; few choice-prime 26.00; good feeders 21.00-50; good-choice 107 lb No. 1 pelt yearlings 19.00; good slaughter ewes 6.00-7.00.

Portland Grain

PORTLAND (AP)—Thursday: Coarse grains, 15-day shipments, bulk, Coast delivery (car No. 1, 36-lb B.W., 64.00) White, No. 1A, mostly 5.75-6.25 cwt; No 1 bulk, delivered Coast: Soft White, 2.33; Soft White (excluding Rex), 2.33; White Club, 2.75.

Hard Red Winter: Ordinary, 2.35; 10 per cent, 2.36; 11 per cent, 2.37; 12 per cent, 2.40.

Hard White Baart: Ordinary, 2.38; 10 per cent, 2.38; 11 per cent, 2.39; 12 per cent, 2.40.

Car receipts: Wheat, 22; barley, 1; flour, 3; corn, 3; oats, 2; mill feed, 2.

GRIST MILL WORKING AGAIN

SUDBURY, Mass. (AP)—The old grist mill with 18-foot water wheel, restored by Henry Ford when he made a shrine of Wayside Inn — famed in Longfellow's poems — now is turning out whole wheat flour on a commercial basis. Such rustic flour milling was one of the New England industries which faded out when the opening of the West curtailed grain-raising in this region.

POISON OAK!

Why experiment? Other remedies may possibly cure you, but the additional suffering is not only unnecessary, but also very painful. For quick relief, try—

HOOD'S
 Poison Oak Lotion
SCHAEFER'S
 DRUG STORE
 135 N. Commercial



Announcing Something New
BEAVERCRAFT
 BUILD IT YOURSELF
 Complete woodworking plant now at your disposal.
HAVE FUN! SAVE DOLLARS!

We invite the public to inspect and use our modern facilities
 Minimum 50c
REASONABLE RATES — First hour \$1.00
 Additional hours 50c per hour
FREE ASSISTANCE
 Phone 3-9414 for information
 Come to 775 N. Lancaster Drive

Don't Miss KOCO 7:15-8:15 TONIGHT CONVENTION ROUNDUP

Never so many local Republican leaders on one program — delegates, officials, organization leaders, newsmen will review the Chicago convention and Republican prospects — McKay, Mott, Fisher, Hatfield, Hogg, Holmer, Hunt, Phillips, Perry, Potts, Jones, Armstrong, Anderson and others.

Sponsored by:
 Valley Motor Co.
 Girod Farm Equipment Co.
 Ralph Johnson Appliance Co.
 Salem Heating & Sheet Metal

The Nation's Top Comics

DAILY AND SUNDAY in Your Home Newspaper

TAXI MISTER?
BUS STOP
THAT'LL BE TWO CENTS
QUICK BLONDE GIVE ME TWO CENTS—I'VE GOT A CAB DRIVER WAITING!

BLONDIE
B-BUT WHERE WILL I FIND DICK TRACY? HOW WILL I DO THIS?
OUR FRIEND TRACY HAS MADE IT ALL VERY EASY FOR YOU. HE'S ON VACATION IN THE NORTH WOODS.
YOU WILL STUDY HIS HABITS AND WATCH WHERE HE GOES EACH DAY! PERHAPS FISHING—PERHAPS HIKING—
FISH! DON'T MENTION THAT WORD!
MEANWHILE—
CAREFREE! AT PEACE WITH THE WORLD, THE TRACY'S RELAX! HOW LONG WILL IT LAST?

DICK TRACY
OH, ANNIE—I WISH YOU AN' YOUR CUTE LITTLE DOG COULD LIVE HERE FOREVER—
BUT WE JUST HAVEN'T GOT THE ROOM OR THE MONEY—
I DON'T KNOW THE RIGHT WORDS, BUT ME AN' ZERO THINK YOU'RE GRAND—
HERE'S A LITTLE SNACK FOR THE ROAD—
STRAWBERRIES—FRIED CHICKEN—COOKIES—JELLY SANDWICHES—HAM SANDWICHES—
OH, MY GOODNESS GRACIOUS—
A REAL DOLLAR-BILL SANDWICH—GLORY DAY! LOOK IT UP! NO MATTER WHERE YOU GO, YOU MEET JUST LOTS AN' LOTS A NICE PEOPLE—

LITTLE ANNIE ROONEY
BOY, AM I BUSHED! I'M GOING TO HIT THE SACK AND SLEEP FOR A WEEK.
SIRS, YOU HAVE SAVED OUR CROPS FROM THE LOCUSTS. OUR VILLAGE IS GIVING A FEAST OF GRATITUDE.
YOU ARE TO BE THE GUESTS OF HONOR.
TONIGHT?
BUT, WAKE UP!
LET'S A FINE VILLAGE FEAST, NO TABLES, CHAIRS OR PLATES, THE GUESTS EAT WITH THE RIGHT HAND FROM COMMON BOWLS OF RICE AND LAMB, AND WIPE THEIR CHINS WITH NAPKINS OF BREAD.

BUZZ SAWYER
TAHW...?
DOO ENIKOOL WEFI!

MICKY MOUSE
OKAY PAPAN... YOU COULDN'T BE THE WAGLER... NOW IT'S MY TURN!

RIP KIRBY
I hope we get to Chuck's cottage pretty soon
Come to think of it, he called it a shack
And it is a shack!
The swamp has practically taken it over.
Let's get out of here!
It's a bit milder, but there's a stove it can dry out
Anyway, it's better than that tent.

GASOLINE ALLEY
YOU HAVE NO IDEA HOW GOOD IT IS TO GET BACK TO HOOTIN' HOLLER, SNUFFY
WHAT ON EARTH YE DOIN' DOWN IN THIS NECK OF TH' WOODS, ENNYHOW, TIGER?
OH, I JUST HAD TO GET AWAY FROM IT ALL FOR A WHILE, SNUFFY
I SWOW!! IT LOOKS LIKE YE BRUNG IT ALL WIF YE

THE BAHAI WORLD FAITH
 presents
MARJORIE TAYLOR
 of Portland
JULY 19, 7:30 P. M.
YWCA
 768 State St.
 No Collection
 Everyone Welcome