

## Jersey Club Spring Show Winners Listed

(Story also on page one.)  
Bruce Richardson of British Columbia, took his time in naming winners Monday in the Marion County Jersey Cattle Club spring show held throughout the day at the Oregon State Fairgrounds under the direction of the Country Club.

Complete list of prize winners include:

Bulls, junior calves: (2 entries) 1. Rex Ross of Mt. Angel on Rossmore Crowned Bob; 2. James Berger, Salem, on Silver.

Bull calves, senior: (6 entries) 1. Ross on Rossmore Crowned Jester; 2. Ross on Rossmore Supreme Crown; 3. Lawrence & Robbins on Royal Advancer Zimna Zip; 4. Miller & Davis on Volunteer Ruby's Flossy Eagle.

Bulls, junior yearlings: (4 entries) 1. Floyd and Leta Bates, Salem, on Brookshire Little Designer; 2. H. Mikkelsen & Son of Woodburn on Westwood Crowning Standard; 3. Mr. and Mrs. Felix Muller, Aumsville; 4. Verna Hickey, Silverton, on Aim Design Duke.

Bulls, senior yearlings: (2 entries) 1. Mr. and Mrs. D. C. Brock, Salem, on Aim's Charming Radar; 2. Leonard Hudson, Silverton, on Come Crown Designer.

Bulls, aged: (3 entries) 1. Rex Ross on Imp, Les Pieces Golden Crown; 2. L. L. Lee, Salem, on Lemonition Double Aim; 3. Miller & Davis on Babe's Bar-nest Golden Eagle.

Junior champion bull: Rex Ross on Rossmore Crowned Jester, senior and grand champion, Rex Ross on Imp, Les Pieces Golden Crown.

Cows, 8 year olds: (4 entries) 1. L. L. Lee, Salem on Mousie of Eastman; J. F. 2. Hudson on Valiant Come Maid; 3. Floyd and Leta Bates on Imp, Little Design; 4. H. Mikkelsen & Son on Standard Fauvic Peggy.

Cows, aged: (5 entries) Open class: 1. Ross on Standard Come Deloris; 2. Muller on Pinnacle Forward Ramon; 3. Lee on Mousie of Eastman; 4. D. C. Brock on Pias Newfield Jersey Pinn; 5. Hudson on Come Son Jr., Maid 4-H and P.F.A. entries: 1. Vernon Vogt on Scotty Aim Donna; 2. James Berger on Challenger; 3. Trunket Jewel.

Cows, 4 year olds: (5 entries) 1. Ross on Victorius Aim DeLeq; 2. Muller on Madam Volunteer Lucky; 3. Mikkelsen on Westwood Lad Etta; 4. Hudson on Goldie Chief; 5. Brock on Radar's Starlet Princess.

Cows, three year olds: (13 entries): 1. Ross on Crowning Dorene; 2. Ross on Designer's Lonely Lady; 3. Brock on Radar's Aiming Gem; 4. Mikkelsen on Westwood Lady Poppy; 5. Mickey McGuire on Pinnacle Forward Vicky; 6. Youth show: 1. FFA, Meigs; 4-H: Verna Hickey on Aim Standard Susan; 2. 4-H: Vernon Vogt; 3. 4-H: James Berger on Double Aim Volunteer Col; 4. Ferguson on Old Aim Volunteer Col; 5. Improbation.

Cows, 2 year olds: (8 entries): 1. Muller on Pinnacle Forward Junita; 2. Ross on Crowning Designers Design; 3. Verna Hickey on Aim Standard Goldie; 4. Brock on Radar's Spotted Rowe; 5. Muller on Pinnacle Scottish Buttercup.

Youth show: 1. Hickey; 2. Vernon Vogt on Beacon Design Noraid; 3. Jack Berger on Volunteer Trunket's Honeybee; 4. John Lee on Leekay's Sybil Volunteer Aim's Boots.

Heifers, senior yearling: (13 entries): 1. and 2. Ross on Crowning Designers Betty and Design C. K. Oma; 3. Brock on Radar's Snow Princess; 4. Muller on 8-11's Viona Trice; 5. Ramonson on unnamed heifer; 4-H club: 1. John Lee on Leeway's Aiming Daisy; 2. Kenneth Buckholz, FFA; 1. Frank Colburn on Cartagena Basa; 2. Kenneth Kapp on Cartagena Dandy Rox; 3. Joe Michalek on Dutch Fra; 4. Jeanne Stone on Julianna; 5. Heifers, junior yearlings: (14 entries): 1 and 2. Ross on Crowning Advance and Lynn's Teasing Beauty; 3. Mikkelsen on Westwood Crowning Fable; 4. Miller & Davis on Eagle Sue Lila; 5. Ende Farm on Endee Patty Pinn; Junior show: 4-

## Guard Property in Japan



HEADQUARTERS, FAR EAST AIR FORCES, Japan—Guarding government property is the chief concern of these men with the 403rd Troop Carrier Wing in southern Japan. They are Lt. Col. Robert Harrington (left), Portland, Ore., wing inspector general, and 2nd Lt. Allen A. McRae, 2025 N. 17th St., Salem, Ore., operations officer of the 403rd Air Police. They supervise a large squadron of American air policemen and a large unit of Japanese security guards. (U. S. Air Force Photo.)

## E. C. Bearse Sr. Succumbs at Home of Son

Ernest C. Bearse Sr. died late Sunday of a heart attack while visiting with his son, Ernest C. Bearse Jr., in Salem. Bearse Sr. was a late resident of Rochester, Mass. He was born in Middleboro, Mass., April 17, 1889, and resided in that area all his life. He was a retired truck driver by trade and had been employed by the Tidelwater Associated Oil Company in Rochester.

Shipment has been made by the Clough-Barrick Company for services and interment at Rochester, Mass.

He is survived by the widow, Mrs. Blanche Bearse of Massachusetts; a son, Ernest C. Bearse Jr., Salem; daughters, Mrs. Sarah Gregory and Mrs. Rita Oldfield, both of Avon, Mass.; a step-daughter, Mrs. Deborah Smith, Rochester, Mass.; a step-son, Harold Ham, Waltham, Mass., and eight grandchildren.

## Less Spending Seen as Only Curb on Inflation

Less government spending and less private spending comprise the only answer to present inflation in the U. S., a Salem Chamber of Commerce luncheon was told Monday by John McGraw, Portland, northwest manager for the National Association of Manufacturers.

Also speaking at the chamber's last luncheon of the season, in the Senator Hotel, was Superintendent Frank B. Bennett of the Salem School District. He described the plans for a new South Salem High School for which a proposed \$4,280,000 bond issue will be up for vote June 16.

## FLYING REPORT

GREELEY, Colo., (INS) - Karen Forman's second grade report card has logged 30,000 miles since she has been sending it to her father, Air Force Maj. James P. Forman, for his signature. The major is serving with the Fifth Air Force in Korea.

## Valley Obituaries

Charles Edwin Calkins WOODBURN—Charles Edwin Calkins, father of Neal Calkins, Woodburn police chief, died at the age of 82 years Sunday at a Woodburn nursing home.

Calkins was born in Wisconsin, Dec. 16, 1869 and came to Woodburn four years ago.

Besides his son he is survived by a daughter, Mrs. Lucille Patras, Dallas, Tex., a brother, Frank Calkins, North Home, Minn.; a sister, Mrs. Hattie Kramer, Walla Walla, Wash., and five grandchildren.

Funeral services are to be held Wednesday at 2 p. m. in the Ringo Funeral Home with interment at Belle Passi Cemetery.



Miller's

# E. O. M.

Odds! Broken Sizes! Special Purchases! Clearances!

Charge It Now  
Pay in July  
TODAY  
WEDNESDAY  
THURSDAY  
SATURDAY

## Clearance

Regular  
\$49<sup>95</sup> and  
\$69<sup>95</sup>  
NEW 1952  
COATS!

SPECIAL PURCHASE OF  
"FINE QUALITY" SMARTLY  
STYLED . . .

# COATS 1/2 PRICE!

LONG AND SHORTY  
STYLES . . .

... here's a coat clearance you'll like! Because every coat is new, fine quality and right up to the minute in style to last you for a season or two.

... your choice, too, of famous fabrics such as Strook's finest, and others in tweeds, gabardines, shags, etc. And, as to colors, the season's wanted ones such as beige, yellow, navy, red and grey.

... treat yourself to an extra coat! Always cool evenings . . . vacations to the seashore or mountains you'll get extra wear . . . extra value at half price! Sizes range from 8 to 40.



EXTRA  
SPECIAL!

A FEW GLAMOROUS  
SPENCER SHORTIES  
Reg. to 29.50  
NOW 9.95, 12.95

2ND FLOOR

## Westward the course of empire continues to take its way

Southern Pacific's

## Golden Empire

is rich in resources like these:

- |                                |                              |
|--------------------------------|------------------------------|
| 38% OF ALL U.S. LUMBER         | 77% OF ALL U.S. MELONS       |
| 71% OF ALL U.S. PETROLEUM      | 77% OF ALL U.S. RICE         |
| 86% OF ALL U.S. COPPER         | 87% OF ALL U.S. LETTUCE      |
| 56% OF ALL U.S. GOLD           | 45% OF ALL U.S. SHEEP        |
| 100% OF ALL U.S. CRUDE SULPHUR | 24% OF ALL U.S. SALT         |
| 32% OF ALL U.S. FISHERIES      | 63% OF ALL U.S. NATURAL GAS  |
| 53% OF ALL U.S. COTTON         | 27% OF ALL U.S. LEAD         |
| 42% OF ALL U.S. SILVER         | 44% OF ALL U.S. CITRUS FRUIT |
| 44% OF ALL U.S. MINERALS       | 81% OF ALL U.S. NUTS         |
| 29% OF ALL U.S. SUGAR BEETS    | 93% OF ALL U.S. GRAPES       |

Figures compiled from latest available United States Government sources.

The Golden Empire served by Southern Pacific continues to be the fastest growing area in the United States. Traffic on our 13,700 miles of lines in 8 states has always shown how the West grows. Here are some of the latest signs:

**INDUSTRY** 4,878 new industries have located along Southern Pacific lines since the end of World War II (see map below). For the past 25 years an average of one new industry per day requiring spur track facilities has located along S. P. lines. Since World War II that average has been more than two per day.

**AGRICULTURE** The volume of all products of agriculture moved by Southern Pacific annually rose from 8,262,944 tons in 1940 to 13,550,311 tons in 1950—an increase of nearly 64%. America's largest dams are in the Western empire, and coupled with the nation's most energetic private power companies, they have brought vast power for industry and have accelerated the opening of new land.

**PEOPLE** Southern Pacific carried 9,226,054 passengers in 1940 and 12,455,483 in 1951—an increase of nearly 35%. The population of our 8 "S. P. States" (see map) was 18,467,411 in 1940 and 24,781,993 in 1950. This 34% increase was 2 1/2 times the national average, while California alone accounted for one sixth of the nation's population increase. S. P.'s advertising of the West induced many of these millions to settle here. Our track passenger streamliners actually brought many of them to their new homes.

**TOTAL MOVEMENT** We moved 40 billion ton-miles of freight during 1951—nearly as much as during 1944, the peak year of World War II. Parenthetically, we're proud that our rapidly dieselizing system set its all-time efficiency record in hauling freight in 1951.

**WHAT OF THE FUTURE?** Peace or war, we think the economy of the eight key "Southern Pacific States" is pretty solidly based upon rich, diversified natural resources, upon expanding and diversified agricultural production, and upon continually more diversified industries. We of Southern Pacific are quite confident that the course of empire will continue its westward trend. We are proud to be foremost in serving that trend.

Southern Pacific is publishing this advertisement in TIME, NEWSWEEK and all editions of the WALL STREET JOURNAL to focus the attention of industrial and financial leaders throughout the country on the growth and importance of the West and Southwest.



SOUTHERN PACIFIC COMPANY, D. J. RUSSELL, President

## GRADUATION GIFTS SALE!

### Clutch Style HANDBAGS

Reg. \$3.00  
NOW \$1.50

... here's the smart gift for the girl graduate. A small, fitted clutch bag she's always wanted. In corde, black or plastic. Red, brown, black, navy. Some contain pencil, pen set, sun glasses, etc. Now at half price! Handbag dept., Main floor.

## REMNANTS FOR E. O. M. CLEARANCE

1/2

Another collection of good quality remnants in wools, rayons, cottons. Shop these for summer apparel . . . shorts, slacks . . . toppers . . . halters . . . jackets . . . skirts, etc. Save half!

## Special! Bar Hats

Hats from our hat bar section will go on E. O. M. clearance at this one wee price tag. Popular styles, wanted summer shades . . . all are here.

Reg. \$3.98 to \$5.95

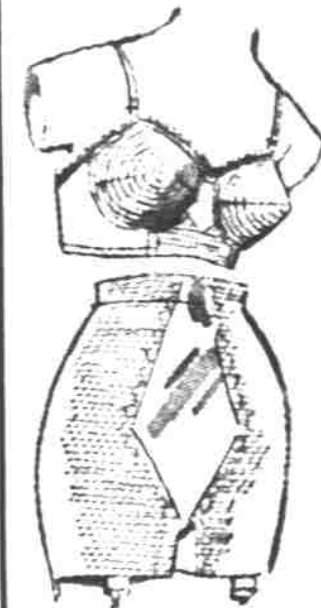
\$2<sup>99</sup>

2ND FLOOR

## Girdles—Bras

VALUES TO \$8.95

\$3<sup>95</sup>



... regular and panty girdles . . . a great variety of styles in bras . . . all are in this E. O. M. clearance at way low prices.

... included in this sale are satins . . . nylon sheers . . . cottons! And don't forget to attend the sale early for best selections.

2ND FLOOR

500 PAIRS OF REG. \$12.95

## SHOES

\$3<sup>95</sup> PAIR



An E. O. M. clearance of 500 pairs of high grade shoes in women's PUMPS . . . TIES . . . WEDGIES . . . STRAPS!

... In white, black, brown, red, green, tan. Come be fitted now and save half or more!

Sizes 3 1/2 to 11

Miller's