

Grains Slide Lower; Board Closed Today

CHICAGO (AP)—Wheat and other grains tilted lower on the board of trade Thursday as grain men awaited the first government grain crop report of the new year. They expected a bumper wheat crop forecast, and that is what they got.

Also holding back demand was the fact that on Good Friday, the board will be closed, although it will re-open for the usual half-day session on Saturday.

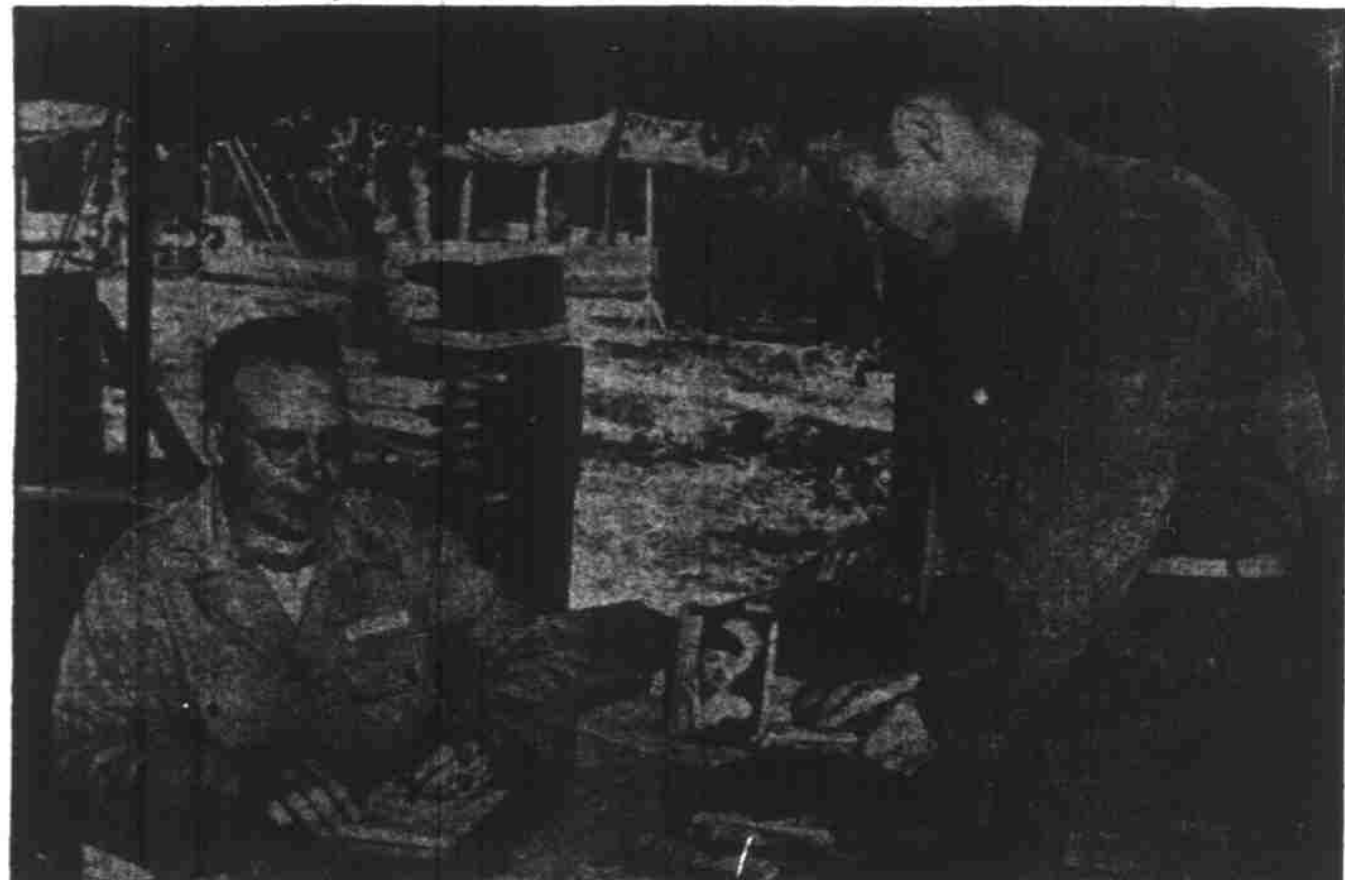
Day-to-day traders didn't want to hold much grain in view of the confused international and domestic situations.

Wheat closed 1/4-3/4 lower, corn 1/2-3/4 lower, oats 1/2-3/4 lower, rye 1/2 lower to 3/4 higher, soybeans 1 cent lower to 1/2 higher and lard 7 to 20 cents a hundred pounds higher.

After the close the Agriculture Department issued a crop forecast which confirmed the belief in the trade that prospects for the winter wheat crop were excellent.

As expected, the department raised its sights from the 918 million bushels forecast last December to prospects at 946,845,000 bushels.

BUYS \$1,000 BOND AT BATTLE FRONT



Sgt. Clarence L. Amridge of Sheridan, Ark., expresses faith in his country in dual fashion—in fighting for it and in buying U. S. Defense Bonds. The Sgt. is shown above counting out \$750 in military script to become the first man at the X Corps Command post in Korea to buy a \$1,000 Defense Bond during the recent Bond Drive. Capt. Joseph S. Edwards, personnel adjutant, is shown serving as Bond officer.

Portland Livestock

PORTLAND (AP)—USDA—Thursday. Cattle salable 250; market active, fully steady; small lot and prime 1200-1300 lb fed steers 33.50, with odd good 500-800 lb out at 32.00-32.50; one lot good 1000 lb steers 32.75; 167 lb 17.50; few utility steers 24.00; commercial heifers 28.00-29.00, part load unsold; few utility heifers 22.00-23.00, including part load beef cows at 22.00-22.50; cutter and utility bulls 22.00-27.50.

Calves salable 25; choice veal dealers scarce; nominally steady at 35.00-37.00; few utility and commercial calves and weaners 20.00-20.50.

Hogs salable 15.00; market active; steady at the week's decline; choice 80-250 lb 18.75, mostly 19.00; few of lum grades and No. 3 types 18.00-18.50; choice around 20.00; 167 lb 17.50; choice 225-515 lb sows 15.00-18.50; few good feeder pigs 18.00.

Sheep salable 16.00; lot choice 90 lb spring lambs 31.00; no odd crop lambs available; good and choice under 110 lb woolled lambs quotable 28.00-37.00; good woolled ewes salable 13.00; good No. 3 pelt ewes Wednesday 11.00.

Portland Grain

PORTLAND (AP)—Thursday—Coarse grains: 15-day shipment, bulk, coast delivery; Oats No. 2, mostly 19.00; Barley No. 2, 45 lb B.W. 70.00.

Wheat bid to arrive market, basis No. 1 bulk delivery, mostly 19.00; 2.50 lb, soft white (excluding Rex) 2.50 lb; White Club 2.50 lb; Hard Red Winter, Ordinary 2.52; 10 per cent 2.52; 11 per cent 2.52; 12 per cent 2.52; Hard White Barst: Ordinary 2.52; 10 per cent 2.52; 11 per cent 2.52; 12 per cent 2.52.

N. Y. Stocks

Table listing New York stock market activity for Thursday, including companies like Admiral Corporation, Allied Chemical, and American Airlines.

Table listing various industrial and utility stocks, including American Power & Light, American Tel & Tel, and American Tobacco.

Table listing various financial and service stocks, including Consolidated Edison, Consolidated Vultee, and Crown Zellerbach.

Table listing various other stocks, including Douglas Aircraft, Eastman Kodak, and Emerson Radio.

Salem Market Quotations

Table listing local market quotations for various goods, including steers, calves, and hogs.

Table listing local market quotations for various types of eggs, including large, medium, and small.

Table listing local market quotations for various types of butter, including premium and utility.

Table listing local market quotations for various types of cheese, including cheddar and Swiss.

Church Gets Anonymous Donation

MATTOON, Ill. (AP)—For the third straight year the Rev. Harold Gravvat of the Church of the Nazarene has received three \$100 bills in an unsigned letter. As before, the 1952 note said only: "Enclosed is \$300 to use as you see fit." Mr. Gravvat said it was added to the church fund.

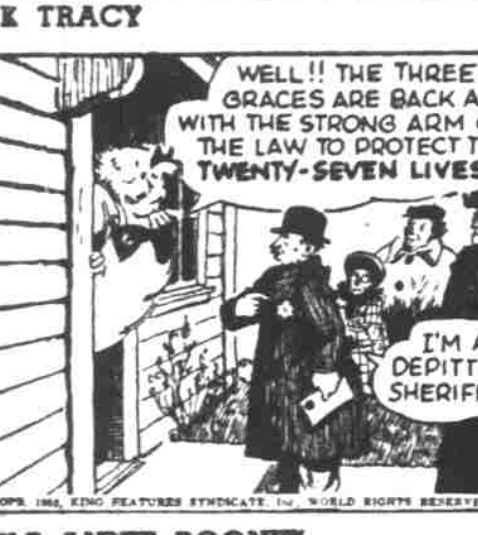
NEW YORK (AP)—A demand for railroad and oil stocks pulled the stock market higher Thursday. Shares of the big steel companies, who are battling the government's seizure of their mills, fell small fractions.

During the session it was next to impossible to keep up with the changing picture in steels. One minute they were ahead a small fraction; the next they had dropped behind by an equally small margin.

Volume totaled 1,130,000 shares. The Associated Press average of 60 stocks gained 70 cents at \$102.40. The rail category of the averages advanced \$1.50, industrials gained 80 cents and utilities a dime.

The Nation's Top Comics

DAILY AND SUNDAY in Your Home Newspaper



Portland Produce

PORTLAND (AP)—Thursday—Butterfat—Tentative, subject to immediate change—Premium quality, maximum to 35 to 1 per cent acidity delivered in Portland, 76-78c; lb, first quality, 74-76c; second quality 72-74c. Valley routes and country points 2 cents less.

Advertisement for 'TOPS' baby products, featuring a baby and the text 'CONSISTENTLY MASTER TOPS'.

Advertisement for 'Schaefer's Drug Store', stating 'WE ARE OPEN EVERY SUNDAY, FROM 9 A. M. 'TIL 4 P. M.' and 'OPEN EVERY NITE 'TIL 8 P. M.'

Advertisement for 'First Federal Savings and Loan Association', featuring a large '2 1/2%' interest rate and the text 'SAVE Where Savings Pays'.

Advertisement for 'Peat Moss Special' and 'Barkus Feed Mill', listing prices for various products.

Advertisement for 'Salem Meat Co.', listing prices for 'Locker Beef' and 'Locker Pork'.