

The Nation's Top Comics

DAILY AND SUNDAY
in
Your Home Newspaper



BLONDIE



DICK TRACY



LITTLE ANNIE ROONEY



BUZZ SAWYER



MICKEY MOUSE



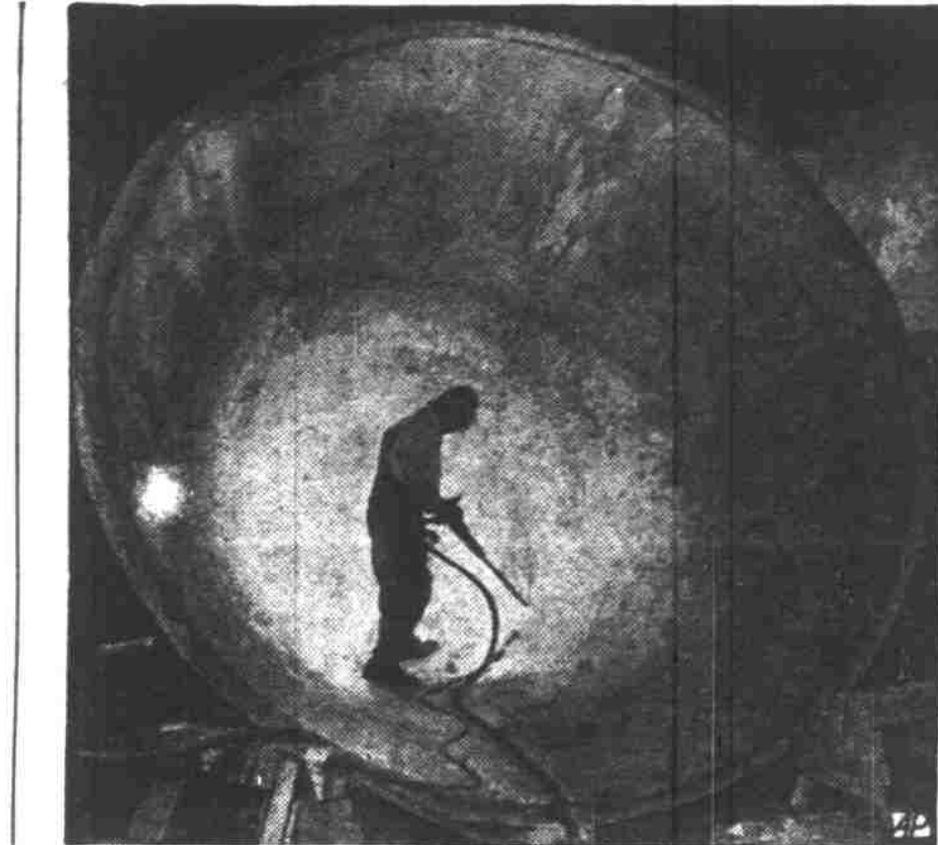
RIP KIRBY



G. GLADYS ALLEY



B. BY GOOGLE



PONDEROUS POT—What appears to be giant mixing bowl is actually world's largest cast steel cinder pot, one of 27 being built by U. S. Steel for hot slag in open hearth shops.

Car Blocks Train's Path

ELGIN, Ill. (AP)—When Donald L. Sprague of nearby Aurora visits this city again, he'll watch how he parks his car.

He parked his car on the Chicago and North Western Railroad tracks which cut diagonally through the downtown area. Police searched the town for Sprague when a train was blocked, tying up automobile traffic.

Sprague finally showed up at the police station and reported his car was missing. Police told him he could reclaim it by paying the charges incurred in towing his car away.

British Navigate Plane by Robot

LONDON, (AP)—Seven miles over Britain, a four-engine jet research plane is making high-speed flights to test a new radio automatic navigator.

The automatic navigator, the Decca Flight Log, shows the pilot the position of his plane on a map and automatically draws in its track. It has already been tried on low-speed helicopters and piston-engine planes. Now it is wanted for jet airliners.

Its designers have built a new airborne receiver which will pick up signals and convert them into the track line on the map while the aircraft is flying miles above the earth at 1,500 miles per hour.

CITY IN SHOW BUSINESS

BENTON, Ill. (AP)—This Southern Illinois city is going into show business. Benton's Council has voted to lease part of its large public park to a driven Theater operator for 10 per cent of gross receipts for 10 years. The operator agreed to build an outdoor theater and the city agreed to reimburse him for all costs except for sound and screen.

FITTED WRIST

NEW YORK (INS)—A new idea in glove construction has been displayed in the spring collection by Kayser. It's called Fitted Wrist—a new, straighter cut which does away with the bunchiness found in most fabric gloves. Kayser uses the new cut with a tapered finger line in order to emphasize the slender lines of the feminine hand.

SCALE WEIGHS INVISIBLE

ST. LOUIS (AP)—Monsanto Chemical Co. weighs invisible quantities of radio-active materials. The company has a scale at its mound laboratory in Miamisburg, O., operated for the Atomic Energy Commission, with a balance so sensitive it can detect weight differences as small as three-billionth of an ounce.

'HARDSHIP' TAX CASE

OKLAHOMA CITY (AP)—Mrs. W. C. High wanted to know why the tax bill on her rural home shot up to 40 cents this year. In the past, she pointed out, the tax had been at most 15 cents—sometimes only 5 or 6 cents on the home, whose net valuation is \$10 after \$1,000 homestead exemption.

'BIG NAMES' TO MARRY

ALLIANCE, Neb. (AP)—George Holy Eagle, 19, and Alfreda Owns the Fire, 18, have been issued a license to marry, according to county records here. George is the son of Moses Holy Eagle and Rosie Owns Many Horse. Alfreda is the daughter of Rudolph Owns the Fire and Libbie Never Missed A Shot.

BRITAIN GETS IMMIGRANTS

LONDON (AP)—During the first nine months of 1935, 6,532 U.S. citizens immigrated to the United Kingdom, an increase of 57 per cent over the previous year, the Board of Trade journal reported. Emigration from Britain to the U. S. was 14,471, an increase of 43 per cent.

SOUTH SLOPE WARMER

UMATILLA, Fla. (AP)—Melon grower W. F. Austin Sr. ran tests through the winter to determine if it was warmer on the south slope of a melon field than the north slope. The south slope was as much as 20 degrees warmer at times, he reported.



CELEBRANT—Marquise de Belmonte, daughter of the Brazilian Ambassador to the U. S., smiles at Cariooca Ball in New York. Ball proceeds are for Brazilian cancer research.



SALE!
Model 8537
the latest triumph of
Arvin Velvet Voice
Serenade
New... rosewood plastic styling
New... sweep-style pointer
New... debossed dial figures
New... AC/DC circuit
New... magna-bass tone

18⁸⁸

Regular 24.95
See it—Hear it now at...

TRY IT FOR A WEEK... IF YOU DON'T SAY IT'S THE BEST VALUE ON THE MARKET, RETURN IT TO
HEIDER'S 428 Court Street
... FOR A REFUND!



Arvin Sleepytimer

- Lulls you to sleep and wakens you gently to your favorite radio programs
 - Reminds you of appointments. Turns itself on, turns itself off—both automatically
 - Automatically starts your coffee-maker, fan or any small electric appliance; turns your TV set on or off
 - Famous Arvin Velvet Voice radio has exceptional range and tone—5 tubes including rectifier, heavy-duty speaker, Magna-Bass amplifier, improved built-in magnetenna
 - Timed by Telechron—to give you the right time all the time. Operates on 60-cycle AC only
- 39⁹⁵**
In Willow Green or Ivory

See it! Hear it!
You Will Find All the Best Makes At
HEIDER'S 428 COURT STREET
-- And the Best in REPAIRING on All Makes --
Call 4-2271 At 395 N. High