

Mentor Accused of Deception

Siemering Storm Center In Arizona Grid Scandal

PHOENIX, Ariz. (AP)—Larry Siemering, head coach at nearby Arizona State College at Tempe, stood silent Thursday in the middle of a man-sized football scandal.

He has been accused of arranging a deception to get around Border Conference eligibility rules. The charge was made by Joe Matesic, who was an all-conference lineman at Tempe last fall.

Matesic's charges, made public in a notarized statement this week, rocked the state.

A member of Indiana University's varsity team in 1950, Matesic admitted he enrolled at Arizona State under the name of his brother Andrew in September, without waiting a year as required.

Walt Ruth, Siemering's line coach who resigned soon after the Matesic ineligibility case first was made known in January, confirmed most of Matesic's statement.

Dr. Grady Gammage, president of the college, investigated the circumstances when they first were disclosed. The report of a special college committee was never made public.

But Dr. Gammage said he talked it over with the State Board of Regents and they approved his recommendation that Siemering be given a new contract for 1952-53.

Thursday Dr. Gammage said, "I consider the matter closed."

Lynn M. Laney, Phoenix attorney and president of the Board of Regents, said he would not be "stamped into drastic action."

"It looks like misguided and disgruntled boys are just sore at Siemering," Laney added.

Gov. Howard Pyle said he felt the board should discuss the new developments but that he had not asked it to review the case.

Siemering has steadfastly refused to say anything—either admit or deny he knew Matesic was ineligible when he played football.

Matesic charged that Siemering not only knew but suggested he change his name.

Snow Hampers Deer Feeding

KLAMATH FALLS (AP)—Motorists are getting a closeup view of deer, forced down out of higher elevations by snow to forage for food.

As many as 300 deer have been counted, browsing unconcerned along the highway. Despite poor weather and feeding conditions, the deer are in good shape, State Game Biologist Ken Cochran reported after a recent survey.

Few deaths by starvation have been reported among the deer, although fire last summer destroyed part of their usual feeding ground in the Modoc National Forest. Feed has been supplied in that area by some sports groups.

Collegiate Ski Tourney Slated

SALT LAKE CITY (AP)—Six schools have accepted bids so far for the National Intercollegiate Ski Championships March 27-29 at the Alta Resort in the Wasatch Mountains 30 miles southeast of here.

The early acceptances came from Wyoming, Denver, Nevada, Western State and Stanford. Utah is the host school.

Dr. John L. Squires, Utah ski coach, said invitations were sent to 20 schools, considered as the best regional representatives in the nation.

Squires said that Washington State, which finished second last year when the meet was held at Mt. Hood, will not enter the 1952 test because of restriction placed on the use of foreign team members.

since the 52 final acceptors for the April 5 Liverpool race were announced Wednesday.

ROYAL TAN LIKED

LONDON (AP)—Royal Tan, one of the two horses that didn't fall in last year's Grand National Steeplechase, was ruled the 10 to 1 favorite in this year's race in a callover of odds by British bookies. The bookmakers offered odds in their private Victoria Club headquarters for the first time



Shopping as You Like It

At your favorite Busick Market. Few stores offer you all these advantages. Telephone free delivery, 30-day charge account privileges or leisurely, comfortable shopping. Wider selection at prices making good living easier.



Get Your Spring Festival Ticket at your favorite Busick Market.

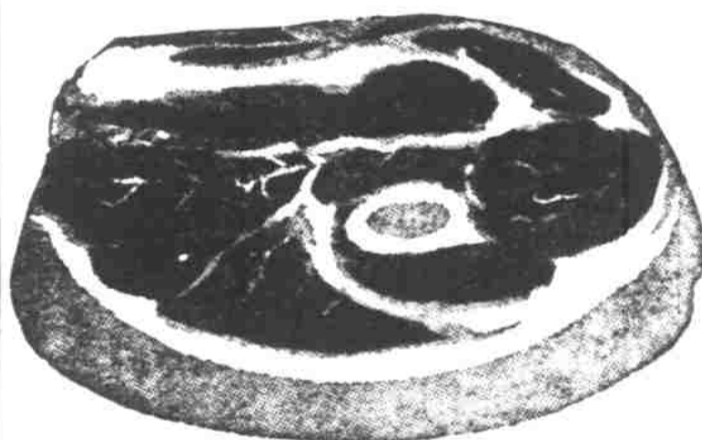
- Sextant Brand Shredded Tuna Regular size cans 2 for 35c
- Tomato Sauce 4 for 25c
- Grapefruit or Blended Orange and Grapefruit Juice No. 2 Can 11c
- Del Monte Early Garden Peas 803 size 2 cans 33c
- Indian Gem Fancy Cream Style Corn 2 cans 27c
- Minced Clams 40-Fathom 2 cans 39c
- A delightful Oyster Stew, you'll want several cans of this 2 cans 39c
- Maxwell House Coffee Per Pound 79c
- Wesson Oil Quart 53c
- Armour's Corn Beef Can 43c
- Del Monte Tomato Juice 46-oz. Can 2 for 45c
- Grapefruit Juice 46-oz. Can 2 for 45c
- Rath's Lunch Meat Regular 47c Size 37c

Would you like a vacation in Honolulu Free!

Free tickets are in downtown stores displaying spring festival cards, ask for them today!



- Boned and Rolled Shoulder Lamb Roast Palatable Economical Lb. 69c
- Genuine Lamb For Stewing Per Lb. 23c
- Standing Rib Roast Per Lb. 79c
- of Grade A Good Beef with that delightful Prime Rib flavor.



POT ROAST fine quality two grades Commercial grade Lb. 65c Grade A Good Lb. 69c

Ground Beef Per Lb. 49c

Perhaps one of the most popular and certainly one of the most pleasing is our famous Fashion Plate Fryers Dressed to lead the parade In any company 2 Pounds \$1.29

Large Roasting or Stewing Hens 4 to 5-lb. average Lb. 47c

Here's Bacon at its best—beautiful 8 to 10-lb. pieces with all the delightful flavor still in it. 1/2 or Whole Lb. 37c

- FOR A REAL TREAT PEACH SHORTCAKE
- Monarch Elberta PEACHES Regular 45c Size Limited quantity at 35c
- Gillnetter's Finest OYSTERS 10-oz. can 35c
- Southern Beauty Cut OYSTERS 10-oz. can 35c
- Swift's PREM Reg. size 39c
- Swift's PEANUT BUTTER 12-oz. 29c

- Fresh, Plump, Tender Asparagus Lb. 29c
- Small Juicy Sunkist Lemons 3 Doz. 59c
- Blubird Tomatoes Nice Ripe—16-oz. 23c
- Nice, Crisp, Young Spring Carrots 3 Generous Size Bunches 25c
- Florida Ruby-Red Grapefruit Nice Juicy 3 for 23c
- Arizona Grapefruit 3 for 14c Sweet, Juicy. Eat Them Like Oranges.
- Large Size Florida Black Diamond Grapefruit 3 for 29c
- Swift's Swiftning 3 Lbs. 73c
- Spry 3 Lbs. 83c
- DURKEE Margarine 2 Lbs. 49c
- PHENIX Margarine 2 Lbs. 47c
- EMPRESS Coffee Lb. 75c

Shop BUSICKS Salem Free Tickets for Many Valuable Prizes Valued at Thousands of Dollars Are Free at Both Stores The more tickets you have the more chances you have to win. Tickets given every day. There will be a drawing tonight, March 21 at the Court House, 5:30 P. M.

GIL WARD'S 10-DAY Fishing Tackle Sale

	Reg.	Sale
Mitchel Spinning Reel	28.75	19.95
7' Glass Rod, (Medaction)	14.95	10.95
100-yd. 3-lb. Mono Line	1.15	80c
100-yd. 6-lb. Mono Line	1.45	99c
Reg. Total		Sale Total
(Or can be purchased individually)	46.30	32.69

TROLLING & CASTING SPECIALS

True Temper Tubular Steel Rod, reg. 10.00	Sale 4.55
Steel Casting Rod Reg. 6.75	Sale 4.40
Steel Casting Rod Reg. 6.95	Sale 4.55
Bronson Casting Reel Reg. 2.95	Sale 1.95
Bronson Casting Reel Reg. 5.95	Sale 4.45
75-yd. Ashway Trolling Line, 30-lb. test Reg. 3.00	Sale 1.50
75-yd. Ashway Trolling Line, 35-lb. test Reg. 3.30	Sale 1.65

MISCELLANEOUS

9.95 Montague Fly Rod (Bamboo)	6.95
8.75 Montague Fly Rod (Bamboo)	5.95
24.00 Phillipson 9-ft. Drift Rod	16.20
2.75 Smelt Net	1.75

ABSOLUTELY FREE
As long as they last
7 1/2-Ft. Spanish Gut

TAPERED LEADER
(1 to a customer)

Gil Ward
450 CENTER STREET

Court & Commercial! Phone 3-9176
Marion & Commercial Phone 3-7962

BUSICK'S DOWNTOWN SALEM MERCHANTS Association