

The Nation's Top Comics

DAILY AND SUNDAY
in
Your Home Newspaper



BLONDIE



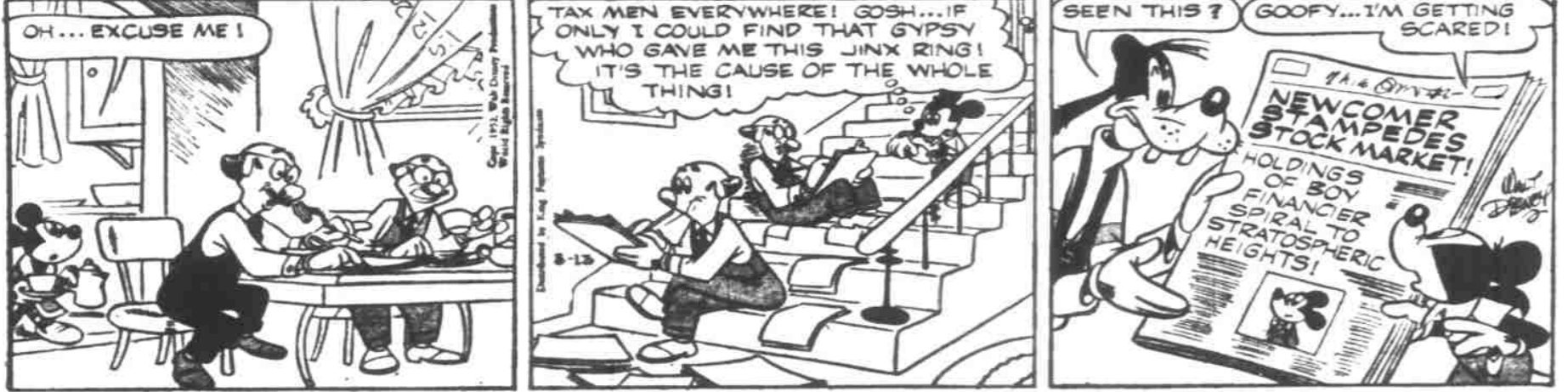
DICK TRACY



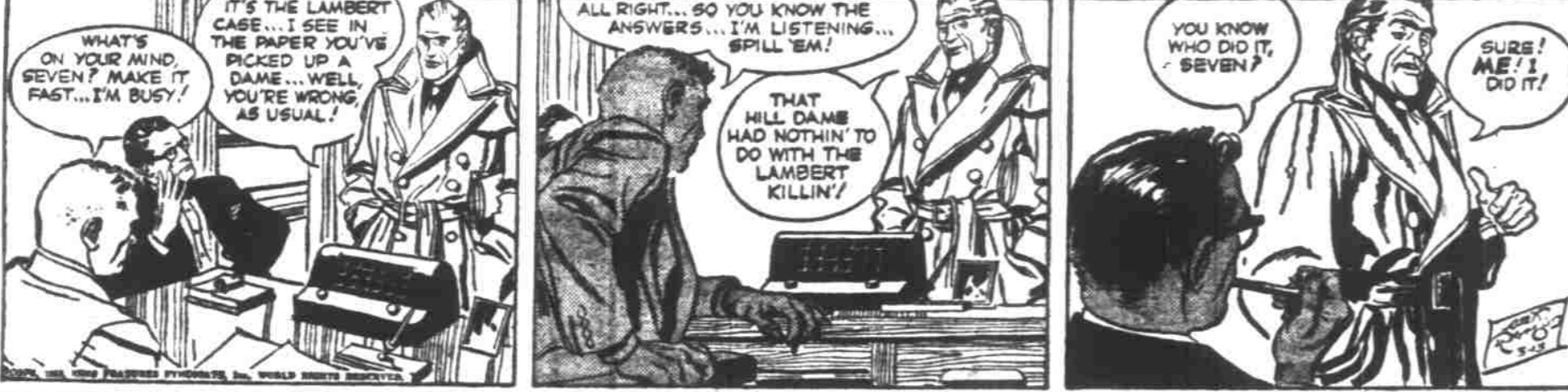
LITTLE ANNIE ROONEY



BUZZ SAWYER



MICKEY MOUSE



RIP KIRBY



LINE ALLEY



New York Stock Quotations

NEW YORK (AP)—Wednesday's closing quotations:			
Ad Corp	28 1/2	Gen Foods	42 1/2
Al Chem	72	Gen Motors	52 1/2
Am Chalmers	49 1/2	Goodyear Tire	45 1/2
Am Airlines	14 1/2	Homestake	36 1/2
Am Pow & Lt	24 1/2	Int Harvester	33
Am Tel & Tel	47 1/2	Int Paper	47 1/2
Am Tobacco	57 1/2	Johns Man	67 1/2
Anacosta	48 1/2	Kennecott	79
Atchison	79 1/2	Libby McR & L	8 1/2
Beat Steel	49 1/2	Locky Air	20 1/2
Eoe Airplane	48 1/2	Loew's Inc	17 1/2
Borg Warner	67 1/2	Long Bell	39
Bur Add M	67 1/2	Mong Ward	61
Calif Packing	26 1/2	Nash Kelv	20 1/2
Can Pacific	49 1/2	NY Central	19 1/2
Caterpillar	36 1/2	North Pac	17 1/2
Celanese	42 1/2	Pac Am Fish	78 1/2
Chrysler	72 1/2	Pac Gas & Elec	35 1/2
Con Edison	33 1/2	Pac Tel & Tel	11 1/2
Cons Vultee	17 1/2	Packard	4 1/2
Crown Zellerbach	56 1/2	Penney	67 1/2
Curt Wright	8 1/2	Penn RR	18 1/2
Doug Aircraft	7 1/2	Pepsi Cola	9
Dupont	87	Philco	31 1/2
Eastman Kodak	44 1/2	Rad Corp	26 1/2
Emery Radio	14 1/2	Rayonier	59
Gen Electric	55 1/2	Ray Pfd.	42 1/2
Repub Stl	41 1/2	Rey Metals	60
Richfield	56 1/2	Safeway	32 1/2
Sears Roebuck	54	Soc Vac	37 1/2
South Pac	65 1/2	Std Oil Cal	51 1/2
Std Oil Nj	76	Studebaker	34 1/2
Sunbeam	10 1/2	Sunshine Mnl	10 1/2
Swift and Co	32 1/2	Transamerica	26 1/2
Twent C Fox	18 1/2	U Pac	111 1/2
Un Oil Cal	39 1/2	Un Airlines	30 1/2
Un Aircraft	31	Un Aircraft	31
Un Corp	5 1/2	US Plywood	32 1/2
US Steel	39	West Un Tel	40 1/2
Warn Bros	14 1/2	West Air Br	25 1/2
West Elc	36 1/2	Woolworth	42 1/2

Portland Produce

PORTLAND (AP)—Wednesday's butterfat-tentative, based on the change: Premium quality, maximum to 35 to 1 per cent acidity delivered in Portland, 84-87c; first quality, 82-85c; second quality, 80-83c. Valley routes and country points 2 cents less.

Butter—wholesaler, 92-93c bulk cubes to wholesalers; Grade AA, 93 score, 78c lb; 92 score, 78c; 90 score, 77c; 88 score, 77c. Above prices strictly nominal.

Cheese—Selling price to Portland wholesalers: Oregon singles, 44-46c; Oregon 5-lb loaf, 48-50c.

Eggs—(to wholesalers): Candler eggs containing no loss, cases included, F.O.B. Portland: A large, 42c; A medium, 40c; B grade large, 38-39c.

Eggs—(to retailers): Grade AA large 46c; A large 45c; A medium 44c; B medium 43c; cartons 3c additional.

Live chickens—(No. 1 quality, F.O.B. plants): fryers, 2 1/2-3 lbs, 27-28c; 3-4 lbs, 27c; roasters, 4 1/2 lbs and over, 27c; light hens, all weights, 18-19c; heavy hens, all weights, 20-21c; old rosters, all weights, 13-15c.

Rabbits—average to growers: Live hite 3 1/2-4 1/2 lbs, 26-29c; 5-6 lbs, 22-25c; old does, 12-16c; few higher; fresh dressed fryers to retailers, 65-68c, some higher.

Fresh dressed meats (wholesaler to retailers, wholesale per cwt): Beef: Steers, choice, 500-700 lbs, \$35.00-38.00; good, \$34.00-36.10; commercial, \$30.70-32.00; utility, \$27.00-28.00; cows, commercial, \$45.00-50.00; utility, \$45.00-48.00; canners-cutters, \$42.00-44.00.

Beef cuts (choice steers): Hind quarters, \$62.50-64.00; rounds, \$60.00-62.10; full loins, trimmed, \$61.00-64.00; tri-tips, \$57.00-60.00; forequarters, \$50.00-52.50; chucks, \$54.00-57.10; ribs, \$65.00-75.10.

Veal: Good-choice, \$56.00-58.40; commercial, \$50.00-51.40.

Calves: All weights, good-choice, \$35.00-38.40; commercial, \$36.00-31.40.

Pork cuts: Loin, No. 1, 8-12 lbs, \$45.00-50.00; shoulders, 18 lbs, down, \$35.00-37.00; spare ribs, \$44.00-45.90; fresh hams, 10-14 lbs, \$48.00-51.00.

Lamb: Choice-prime, 40-50 lb, \$54.00-55.50; good, \$52.00-55.00.

Mutton: Good-choice \$33.40-80.

Wool: Grease basis, nominally \$6.00-65c.

Mohair: 50c lb on 12-month growth, F.O.B. country shipping points.

Country-killed meats: Chicken: Best ewes and wethers, 26-28c lb; rough heavy bucks, ewes 16-18c.

Veal: Top quality, 53c lb; others 37c and above.

Beef: Utility cows, 38-40c lb; canners-cutters, 35-38c.

Hogs: Lean blockers, 27-29c lb; others, light, 22-23c.

Lamb: Top grade, 50-52c lb; other grades according to quality.

Onions: No. 1, \$3.25; No. 2, \$3.00-3.25; sets No. 1, \$6.33; new crop Florida triumphs No. 1, 50 lb size, \$6.

Hay: U. S. No. 2 green alfalfa, delivered car and truck lots, F.O.B. Portland \$45.00 ton; No. 1 timothy mixed hay F.O.B. Portland, baled \$42.00-43.00; No. 1 grass hay \$40.00, baled, delivered, Portland.

Stock Market Moves Higher

NEW YORK (AP)—A last-minute rally just managed to haul the stock market onto higher ground Wednesday.

The volume was 1,320,000 shares. Neither the Eisenhower and Keating victories in the New Hampshire primaries nor Britain's budget moves appeared to have any appreciable effect on the market.

Traders kept an eye on the railroad strike, which ended at most points.

Rail stocks that moved ahead fractions included Santa Fe, Southern Pacific and Northern Pacific.

The Associated Press average of 60 stocks moved ahead 20 cents at \$100.40.

Industrials were ahead 60 cents, rails were down 20 cents and utilities were unchanged.

Valley Obituaries

William H. Dorman, Statesman News Service

LEBANON—Services are pending at Dallas for William H. Dorman, 79, of Lebanon who died here Tuesday.

Survivors include two daughters, Juanita Hobbs, Lebanon, and Marguerite of Kennewick, Wash.; three sisters, Mrs. R. A. Lathrop, Scio, Mrs. Lucy Weller and Mrs. Emma Dancer, both of Salem; two brothers, J. H. Dorman and W. L. Dorman, both of Salem; and two grandchildren.

Salem Market Quotations

(As of late yesterday)	
BUTTERFAT—	86
Premium	84
No. 1	84
No. 2	84
F.P.R.	84
Wholesale	84
Recall	84
(By) (Boying)	84
(Wholesale prices range from 8 to 7 cents over buying price)	
Large AA	41
Large AB	37
Medium AA	34
Medium AB	34
Small	34
POULTRY—	
Leghorn hens	16
Colored fryers	16
Old roasters	14
Roasters	19
Veal	19
Fat Dairy	20.00 to 21.00
Cutter	16.00 to 19.00
Heifers	20.00 to 22.00
Bulls	24.00 to 27.00
Good Veal	31.00 to 34.00
Calves	24.00 to 30.00
Fat Lamb	23.00 to 26.00
Feeders	24.00 to 25.00

The Statesman, Salem, Oregon, Thursday, March 13, 1952

Grains Take Gentle Slide

CHICAGO (AP)—Grains went into a gentle slide on the board of trade Wednesday but soybeans and lard ended with small gains.

Wheat finished 7/8 lower, corn 1/4-3/8 lower, oats 1/4-3/8 lower, rye 1 cent lower to 2 cents higher, soybeans 1/2-1 1/2 higher, and lard 2 to 3 cents a hundred pounds higher.

Buyers hesitated in wheat because of reports from the southwest that producers were offering cash wheat a little more freely.

It was felt that prices are around the level where wheat can be reaped from the government loan and sold profitably, even after payments of storage charges.

Flour business, meanwhile, was not showing any signs of expanding. However, there was a little export trade, France taking 1,340,000 bushels of hard wheat.

Private reports from the winter wheat area mentioned fairly strong winds with dust in the air in the Oklahoma Panhandle.

Stocks and Bonds

Compiled by The Associated Press March 12

STOCK AVERAGES			
	15	15	60
Ind. Rals	15	15	60
Unch	15	15	60
Net change	15	15	60
Prev day	15	15	60
Week ago	15	15	60
Month ago	15	15	60
Year ago	15	15	60

Portland Grain

PORTLAND (AP)—Wednesday—No coarse grains.

Barley (No. 1) to arrive market, basis No. 1 bulk, delivered coast: soft white 2.53; soft white (excluding Rex) 2.53; hard red winter: Ordinary 2.33; 10 per cent 2.33; 11 per cent 2.33; 12 per cent 2.33.

Hard white Bant: Ordinary 2.33; 10 per cent 2.33; 11 per cent 2.33; 12 per cent 2.33.

Today's car receipts: Wheat 83; barley 4; flour 6; corn 6; oats 1; mill feed 6.

Portland Livestock

PORTLAND (AP)—(USDA)—Wednesday's market: Choice 200, market active; steady-strong; some cows 25-30 cents higher; few fed steers unusual; odd head utility steers 26.00-28.00; shells down 22.00-27.00; few light commercial heifers 23.50; corner and cutter cows 22.00-25.00; utility cows 21.00-22.00; 25-27 lb. utility pigs 21-25; odd commercial bulls held up to 30.00.

Calves: Utility market active on meager supply; few choice vealers 35.00-36.50; good grades 31.00-33.00; utility and commercial calves and weaners 20.00-30.00; culls down to 15.00 or below.

Hogs salable 250; market active; strong-25 cents higher; choice 120-235.

CALL FOR BIDS

County of Marion, State of Oregon, is asking for sealed bids for grading, graveling, and surfacing with an 8-11 penetration asphalt, according to the plans and specifications supplied by the County Engineer, and as petitioned on Hudson Avenue, Marion County, Oregon.

Plans and specifications may be obtained at the office of the County Engineer, Courthouse, Salem, Oregon. Bids will be opened by the County Court in the County Court Chambers at the Courthouse in Salem, Oregon, at the hour of 10:30 A.M., Tuesday, April 1, 1952.

The county reserves the right to accept or reject any or all bids in the best interest of Marion County.

BY ORDER OF THE MARION COUNTY COURT M. 11-13

NOTICE TO CREDITORS

NOTICE IS HEREBY GIVEN THAT the undersigned has been duly appointed as executor of the estate of James H. Cooke, deceased, and any and all persons having claims against the said estate are hereby required to present said claims, duly verified as by law required, to the undersigned at the office of Williams & Skopel, attorneys for said executor, 412 Pioneer Trust Building, Salem, Oregon, within six months from the date of this notice. Dated and first published the 6th day of March, 1952.

JAMES A. HENRY
Executor of the Estate of James H. Cooke, deceased.
WILLIAMS & SKOPEL
Attorneys for Executor,
412 Pioneer Trust Building,
Salem, Oregon. M. 6-13-26-27. A. 2

300 Personal

312 Lost and Found

LOST: Lady's black suit jacket with jeweled pin between Glen Creek Dr. and S. P. Depot toward Mrs. Mirer R. Worth, 1685 Gless Creek Drive.

FOUND: 3 car keys on a chain, in front of the Statesman office, Phone 2-2441.

314 Transportation

WANTED: Ride Salem to Portland and return, five day week. Phone 3-4880.

316 Personal

ALCOHOLICS Anonymous Ph 3-8128, PO Box 724 YMCA Wed and Fri at 8:00 p.m.

400 Agriculture

402 Livestock

BONDED LIVESTOCK buyer E. C. McCandless, 117 S. 2nd, (R-515) LICENSED and NOTICED livestock buyer. E. C. McCandless, 117 S. 2nd, Phone 2-345

ATTENTION LOGGERS AND FARMERS

LOGS WANTED

8-Ft. - 16-Ft. - And Long Lengths At Top Prices

BURKLAND LUMBER CO.

Phone 1125 Turner, Oregon

Naturally Fresh

WRIGLEY'S SPEARMINT CHEWING GUM

AT HOME AT WORK AT PLAY

WRIGLEY'S SPEARMINT CHEWING GUM

10 No. 1 and 2 butchers 20-25-30-35-40-45-50-55-60-65-70-75-80-85-90-95-100-105-110-115-120-125-130-135-140-145-150-155-160-165-170-175-180-185-190-195-200-205-210-215-220-225-230-235-240-245-250-255-260-265-270-275-280-285-290-295-300-305-310-315-320-325-330-335-340-345-350-355-360-365-370-375-380-385-390-395-400-405-410-415-420-425-430-435-440-445-450-455-460-465-470-475-480-485-490-495-500-505-510-515-520-525-530-535-540-545-550-555-560-565-570-575-580-585-590-595-600-605-610-615-620-625-630-635-640-645-650-655-660-665-670-675-680-685-690-695-700-705-710-715-720-725-730-735-740-745-750-755-760-765-770-775-780-785-790-795-800-805-810-815-820-825-830-835-840-845-850-855-860-865-870-875-880-885-890-895-900-905-910-915-920-925-930-935-940-945-950-955-960-965-970-975-980-985-990-995-1000-1005-1010-1015-1020-1025-1030-1035-1040-1045-1050-1055-1060-1065-1070-1075-1080-1085-1090-1095-1100-1105-1110-1115-1120-1125-1130-1135-1140-1145-1150-1155-1160-1165-1170-1175-1180-1185-1190-1195-1200-1205-1210-1215-1220-1225-1230-1235-1240-1245-1250-1255-1260-1265-1270-1275-1280-1285-1290-1295-1300-1305-1310-1315-1320-1325-1330-1335-1340-1345-1350-1355-1360-1365-1370-1375-1380-1385-1390-1395-1400-1405-1410-1415-1420-1425-1430-1435-1440-1445-1450-1455-1460-1465-1470-1475-1480-1485-1490-1495-1500-1505-1510-1515-1520-1525-1530-1535-1540-1545-1550-1555-1560-1565-1570-1575-1580-1585-1590-1595-1600-1605-1610-1615-1620-1625-1630-1635-1640-1645-1650-1655-1660-1665-1670-1675-1680-1685-1690-1695-1700-1705-1710-1715-1720-1725-1730-1735-1740-1745-1750-1755-1760-1765-1770-1775-1780-1785-1790-1795-1800-1805-1810-1815-1820-1825-1830-1835-1840-1845-1850-1855-1860-1865-1870-1875-1880-1885-1890-1895-1900-1905-1910-1915-1920-1925-1930-1935-1940-1945-1950-1955-1960-1965-1970-1975-1980-1985-1990-1995-2000-2005-2010-2015-2020-2025-2030-2035-2040-2045-2050-2055-2060-2065-2070-2075-2080-2085-2090-2095-2100-2105-2110-2115-2120-2125-2130-2135-2140-2145-2150-2155-2160-2165-2170-2175-2180-2185-2190-2195-2200-2205-2210-2215-2220-2225-2230-2235-2240-2245-2250-2255-2260-2265-2270-2275-2280-2285-2290-2295-2300-2305-2310-2315-2320-2325-2330-2335-2340-2345-2350-2355-2360-2365-2370-2375-2380-2385-2390-2395-2400-2405-2410-2415-2420-2425-2430-2435-2440-2445-2450-2455-2460-2465-2470-2475-2480-2485-2490-2495-2500-2505-2510-2515-2520-2525-2530-2535-2540-2545-2550-2555-2560-2565-2570-2575-2580-2585-2590-2595-2600-2605-2610-2615-2620-2625-2630-2635-2640-2645-2650-2655-2660-2665-2670-2675-2680-2685-2690-2695-2700-2705-2710-2715-2720-2725-2730-2735-2740-2745-2750-2755-2760-2765-2770-2775-2780-2785-2790-2795-2800-2805-2810-2815-2820-2825-2830-2835-2840-2845-2850-2855-2860-2865-2870-2875-2880-2885-2890-2895-2900-2905-2910-2915-2920-2925-2930-2935-2940-2945-2950-2955-2960-2965-2970-2975-2980-2985-2990-2995-3000-3005-3010-3015-3020-3025-3030-3035-3040-3045-3050-3055-3060-3065-3070-3075-3080-3085-3090-3095-3100-3105-3110-3115-3120-3125-3130-3135-3140-3145-3150-3155-3160-3165-3170-3175-3180-3185-3190-3195-3200-3205-3210-3215-3220-3225-3230-3235-3240-3245-3250-3255-3260-3265-3270-3275-3280-3285-3290-3295-3300-3305-3310-3315-3320-3325-3330-3335-3340-3345-3350-3355-3360-3365-3370-3375-3380-3385-3390-3395-3400-3405-3410-3415-3420-3425-3430-3435-3440-3445-3450-3455-3460-3465-3470-3475-3480-3485-3490-3495-3500-3505-3510-3515-3520-3525-3530-3535-3540-3545-3550-3555-3560-3565-3570-3575-3580-3585-3590-3595-3600-3605-3610-3615-3620-3625-3630-3635-3640-3645-3650-3655-3660-3665-3670-3675-3