

# THE VALLEY NEWS COLUMNS

From The Oregon Statesman's Valley Correspondents

## Sweet Home Rock and Mineral Society Plans for Halloween

**SWEET HOME** — At their meeting Thursday the Sweet Home Rock and Mineral society voted to hold a Halloween and hard-times party on the night of October 19th at 7:30 in the union high school building.

Everyone is invited to attend this party, but, anyone appearing appearing there in ordinary dress-up clothes will be heavily fined. Refreshments of pumpkin pie, doughnuts and coffee will be served. There will be entertainment of various kinds. Helen O'Malley and Lester Muntz were appointed committee heads to arrange for the evening's entertainment.

During the business session, ways and means were discussed to raise funds for the organization to enable them to purchase some rock-cutting and polishing machinery which would be available for use of members. John Benson and Lester Muntz were appointed as a committee to investigate the cost of the desired machinery. Jean Crawford was appointed chairman of a committee to work out plans to raise funds.

Other committees appointed were: Entertainment—Mel Crawford, Alice Derby, Jean Crawford, Sue Johnson, Keith Tellefson; food committee—Viola Wilkening, Eva Benson, Laura Emmert, Ella Davis, Edith Tellefson; trip — John Benson, Gladys Knowles, Muriel Knight, Harley Johnson, Robert Anderson, sr.

The following committee were appointed to serve for one year: display — Harold Derby, Lester Muntz, Ethel Tower, Jess Emmert, Odes Wilkening; clean-up—Bobby Anderson, Larry Crawford, David Johnson; historian—Ethel Tower; welcoming—Helen O'Malley, Viola Wilkening; jackpot—John Benson, Georgie Muntz.

Out of town guests at Thursday night's meet were Mr. and Mrs. Roger Eales, Eugene; Mr. and Mrs. Royal Pederson, Lebanon; Mr. and Mrs. Joe Lericke, Eugene; R. C. Troyer and Homer Mitsch, Lebanon; Mr. and Mrs. M. O. Hagen, Midway and Otto Pitchford, Holy.

## Students Elect New Officers At St. Boniface

**SUBLIMITY**—The student body of St. Boniface high school met recently to elect yell leaders and song leaders for the year. Song leaders elected are Mary-Jean Ditter, Mary Louis Hottinger and Marlene Heuberger.

Deveta Nightingale, Dolores Wolf, Marlene Odenthal and Marilyn Minden will lead the cheering sections at all games during the 1950-51 season.

The pep club elected officers for the coming year. Those chosen are president, Betty Ann Wolf; vice president, Joanne Birkholz; secretary, Elaine DeJardin; and treasurer, Jeannette Kintz.

The paper staff for the "Beaconlight," St. Boniface's high school paper, was elected last week. Editor-in-chief is Marlene Odenthal; assistant editor, Betty Ann Wolf; exchange editor, LaVeta Dozier; editors, Claudia Benz, and Thomas Tate; managers, Marlene Frank and Duane Bradley; typists, Darlene Kintz, Claudia Benz, Eleanor Gorman, Mary June Wolf, Elaine DeJardin, Rosella Heuberger, Marita Zuber and Rosemary Albus; sports editors, Ronald Meier and Marita Zuber; society editor, Deveta Nightingale; class reporters, Francis Gerspacher, Francis Eizel, Dorothy Frank and Marilyn Minden.

Joanne Lulay, daughter of Mr. and Mrs. William Lulay of Sublimity, was recently selected to join Treble Triad, Maryhurst college chorus, after competitive tryouts. First appearance of the group was at the mass of the Holy Spirit in the college chapel.

## Jefferson Boy Honored With Birthday Party

**JEFFERSON**—Mrs. John Zehner entertained at a birthday party honoring her grandson, Gerald Zehner, at his home Saturday afternoon. It was Gerald's eleventh birthday. Most of his guests were classmates at Sidney school.

Present were Arthur Flant, Bobby Bostrack, Francis, Gail and Ralph Mariatt, Carol Hayden, Carol Etter, Jerry Hutchinson, Dee Hershey, Gary, Sharon and Johnny Zehner, Linda Lee Zehner of Salem, and the honor guest, Gerald Zehner. Helping serve refreshments were Miss Pat McKinnon and Mrs. Roland Board of Salem and Mrs. George Mariatt.

The pohutukawa tree of New Zealand may be gnarled and twisted, says the National Geographic Society, but it blazes every year with red blossoms.

## Beavers Keep Farmer Busy

By Betty Drager  
Statesman News Service

**CLOVERDALE** — Students in the upper-grades room, and their teacher, J. Jenck, recently spent a part of an afternoon studying the newly made beaver dam which is an property belonging to the John Petersons.

Seems as though the little fellas are not really wanted on the property and steps have been made to see what can be done to get rid of them. In the past few years the island was ditched in order to get it properly drained and now here comes dams (beaver made) to prevent such drainage.

Small trees have been felled and mud carried to build the dams, which shows plainly the will power of these small animals.

## U.S. History Class Offered At Dallas

Statesman News Service

**DALLAS** — A class in early American history is being offered this fall term for elementary teachers who require history 378.

It is an upper division course, for third and fourth year college students, covering history from early colonial days to the Civil War. For undergraduate students who are working for third year certification and, or, a bachelor of science degree, it is a required course.

Ruth Carter from the Oregon College of Education's history department, will be instructor. It is a regular adult night-class authorized by the general extension division of the state system of higher education.

The first class meeting will be on Monday, October 9, at the new Lyle school in Dallas, from 7 to 10 p.m. Three hours of credit are offered.

Out-of-state teachers now teaching on emergency certificates will find this class especially valuable, as their Oregon certification is earned from OCE required courses. Fee is \$15 per term. Any adult interested may enroll, the audit fee being \$10.50. Additional information is available at the Lyle school.

## 4-H Teams from Mt. Angel Entered In Portland Show

Statesman News Service

**MT. ANGEL**—Two 4-H club demonstration teams from St. Mary's school, their club leaders went to Portland Saturday to perform at the Pacific International Livestock show at the request of Mrs. Winifred Gillen, assistant state club agent. The demonstrations will be given both in the morning and in the afternoon.

Anita Wilde and Laura Schmitz of the Homemaking club led by Theresa Dehler, school principal, will demonstrate how to pack a traveling bag; and Kenneth Berchtold and Joseph Schallberger, members of Miss Pauline Saalfeld's Health club, will give a demonstration on posture.

Both demonstrations had been given at the county and state fairs before being selected for the Pacific International. Mrs. Al Wilde took the group to Portland in her car.

## Garden Club Plans Sale, Fuchsia Talk, Mt. Angel

Statesman News Service

**MT. ANGEL**—Two special features of the next meeting of the Mt. Angel Garden club, Wednesday, October 11, at 8 p. m., will be a plant sale and a talk on fuchsias. The public is invited to attend the meeting.

Arrangements have been made to have an authority on fuchsias here that night to give information on the growing and handling of this plant which is steadily growing in popularity. Plants and bulbs for the sale are to be donated by club members who have surplus stock and the proceeds will go into the club treasury.

Lake Geneva, Switzerland, is crescent-shaped, 4 1/2 miles long and eight miles at its widest point.

### GAL JOBS

**SACRAMENTO** (INS) — California reports that in recent weeks there has been an increased interest in the employment of women.

### POOL NAMED

**BETHLEHEM, Pa.** (INS) — The new \$110,000 swimming pool at Lehigh university will be named in honor of a late vice president of the Bethlehem Steel company.

It will serve as a remembrance of Myrl L. Jacobs, who was graduated from the university in 1910.

### GLASS CLASS

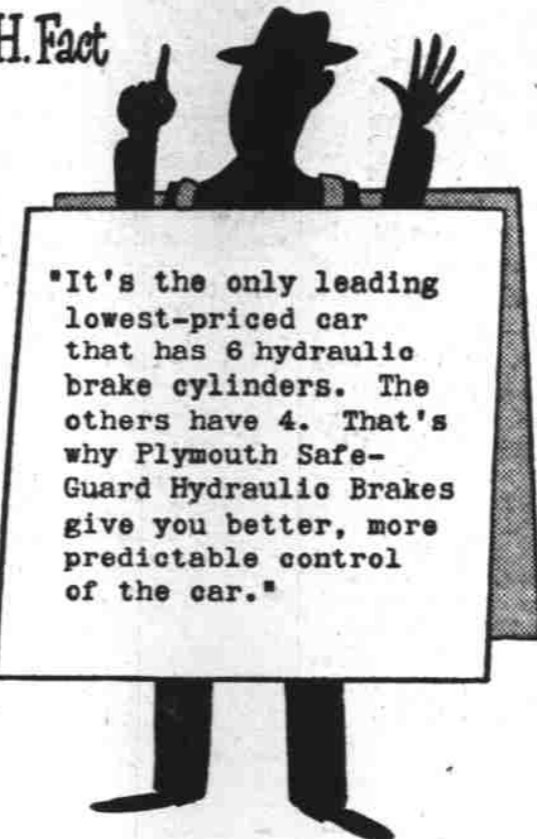
**BOULDER, Colo.** (INS) — Colorado university has started a course in glass blowing, but there's no guarantee a student can create a perfect brandy snifter at the end of the study period.

Hans Landay, formerly chief, glass blower for the Armour research foundation, is teaching the class.

The Himalaya mountains are one of the world's major earthquake belts, according to the National Geographic society.

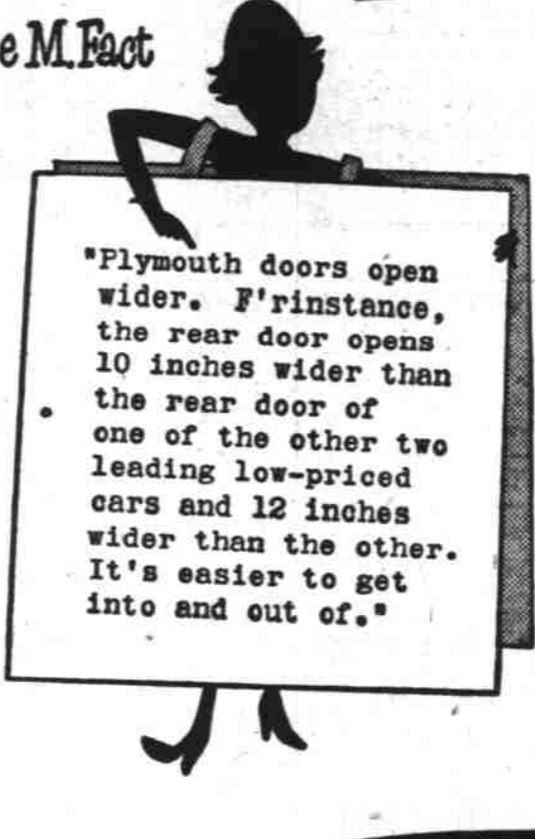
# Let the Facts speak for themselves!

John H. Fact



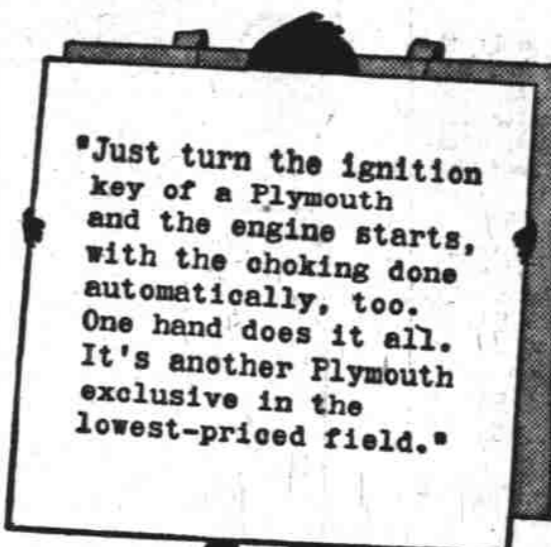
"It's the only leading lowest-priced car that has 8 hydraulic brake cylinders. The others have 4. That's why Plymouth Safe-Guard Hydraulic Brakes give you better, more predictable control of the car."

Alice M. Fact



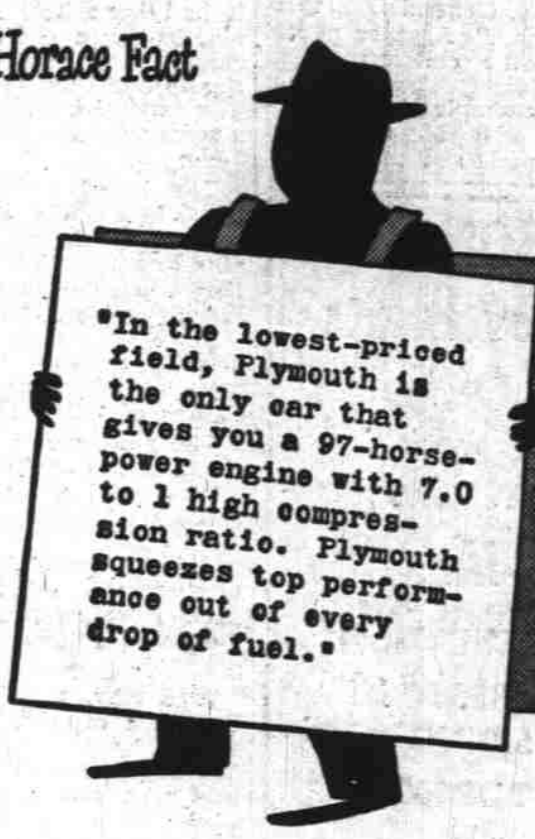
"Plymouth doors open wider. For instance, the rear door opens 10 inches wider than the rear door of one of the other two leading low-priced cars and 12 inches wider than the other. It's easier to get into and out of."

George Edward Fact

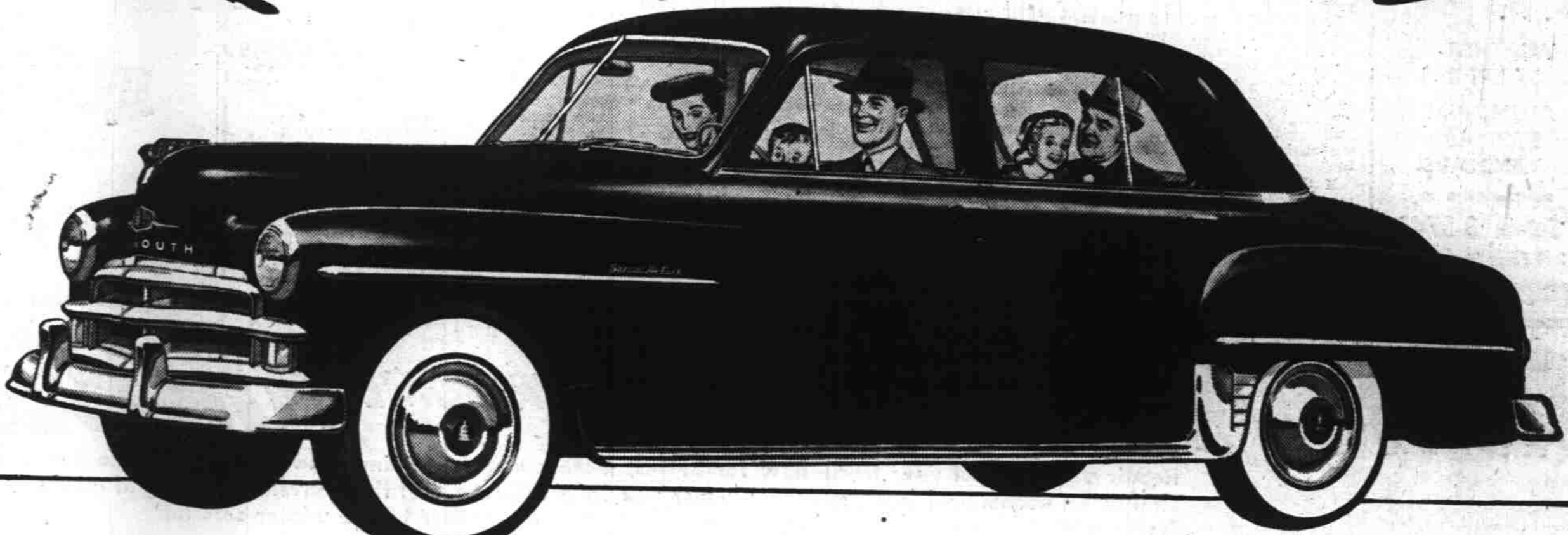


"Just turn the ignition key of a Plymouth and the engine starts, with the choking done automatically, too. One hand does it all. It's another Plymouth exclusive in the lowest-priced field."

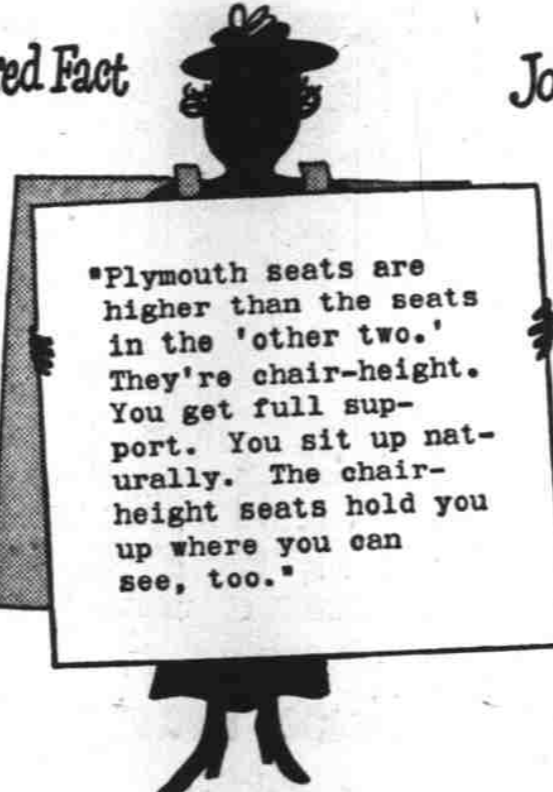
Horace Fact



"In the lowest-priced field, Plymouth is the only car that gives you a 97-horsepower engine with 7.0 to 1 high compression ratio. Plymouth squeezes top performance out of every drop of fuel."

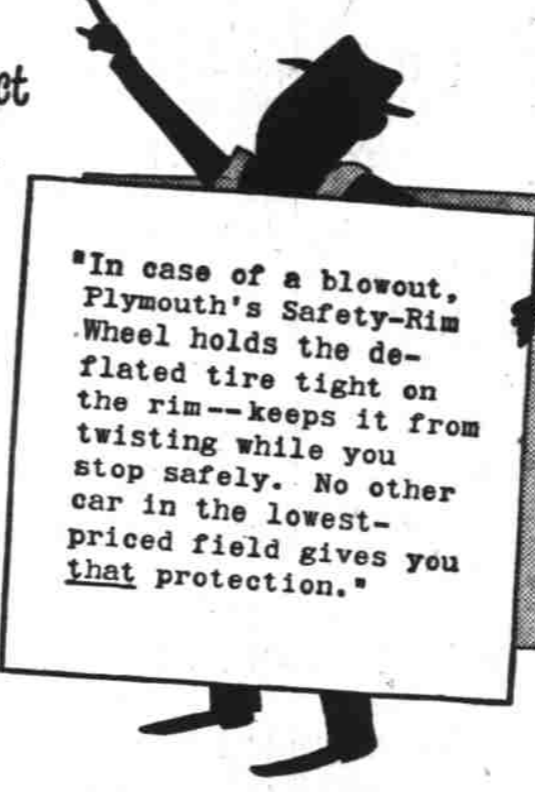


Mildred Fact



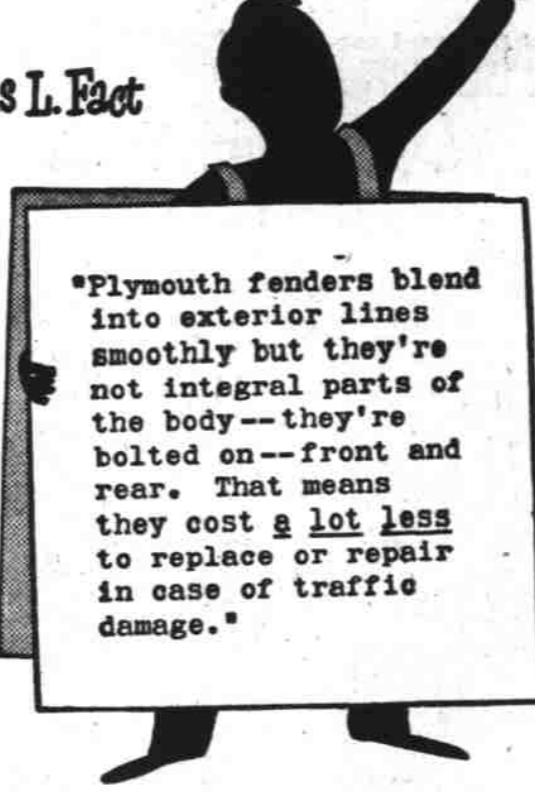
"Plymouth seats are higher than the seats in the 'other two.' They're chair-height. You get full support. You sit up naturally. The chair-height seats hold you up where you can see, too."

Joe Fact



"In case of a blowout, Plymouth's Safety-Rim Wheel holds the deflated tire tight on the rim—keeps it from twisting while you stop safely. No other car in the lowest-priced field gives you that protection."

Willis L. Fact



"Plymouth fenders blend into exterior lines smoothly but they're not integral parts of the body—they're bolted on—front and rear. That means they cost a lot less to replace or repair in case of traffic damage."

note:

There are many other Facts connected with Plymouth—feature after feature that no other leading low-priced car gives you. Why not get to know the Facts? Your Plymouth dealer will introduce you.

## - and your dollars will demand

# PLYMOUTH



PLYMOUTH Division of CHRYSLER CORPORATION, Detroit 31, Michigan

COMMUNITY CHEST — FORTY-FOUR CAMPAIGNS IN ONE!

# EVERYONE GIVES... COMMUNITY CHEST

No other one gift serves so many people in so many ways!

## Stevens & Son

JEWELERS - SILVERSMITHS

390 State Street