

## Truman Aide, Mine Chief Hit Candidacy of Senator Taft

WASHINGTON, Sept. 19—(AP)—John L. Lewis told Ohio coal mine owners today his United Mine workers may quit work in any mine Senator Taft visits in his campaign for reelection.

The mine workers' chief blasted the Ohio republican in a letter brimming with invective. Lewis advised the mine owners to "refuse him (Taft) entry to mines where Americans toil."

His letter, addressed to the president of the Ohio Coal Operators' association, R. Livingston Ireland, Cleveland, read:

"Dear Mr. Ireland:  
"Taft's secret political handlers propose to have him enter coal mines to cozen the men underground. This will be bad from the standpoint of coal production.

"Taft was born encased in velvet pants, and has lived to rivet an iron collar around the necks of millions of Americans. He is the relentless, albeit witless, tool of the oppressors of labor.

"You should refuse him entry to mines where Americans toil. The underground workings are necessarily confined and the air therein is easily contaminated. The effluvia of the oppressor is ever disagreeable and could enrage the men to a point of evacuation of the mine. This we would both deplore.

"Yours truly, John L. Lewis."  
Lewis has long been a bitter opponent of Senator Taft, partly for the latter's co-authorship of the Taft-Hartley labor law.

At Pittsburgh where he was attending a conference, Ireland said he had not yet received the letter from Lewis and could not comment on it until he did.

## New Children's Hospital at Eugene Opened

EUGENE, Sept. 19—(AP)—Dedication of the new children's hospital here will mark the fourth annual meeting of the Oregon society for crippled children and adults opening Thursday.

The school opened Sept. 11 with 22 students. Dedicatory services will be Thursday afternoon, with an address by Dr. Frederick M. Hunter, honorary chancellor of the state system of higher education. Easter seal sales helped to finance the school.

The society's meeting will close Friday. Among the speakers listed are Lawrence J. Linch, executive director of the national society for crippled children and adults; Dr. Paul D. Hauser, director of the crippled children's division of the University of Oregon medical school; Dr. Clarence A. Splithoff, orthopedist consultant, state of California; and Dr. A. Triolo, medical director of the Lane county health department.

HOUSTON, Sept. 19—(AP)—W. Averell Harriman, president Truman's trusted advisor, called today for the defeat of Sen. Taft (R-Ohio) in November.

He asserted before the American Federation of Labor convention that the Ohioan "cannot be trusted" with a role in the world crisis. Taft is co-author of the Taft-Hartley labor act.

Harriman said communist objectives would have been furthered if congress had carried out some of Taft's positions.

"We no longer can afford to leave in positions of high responsibility men who fail to recognize that American leadership is essential to the peace of the world," Harriman said.

Taft, informed of Harriman's statements, said in Columbus, O.: "They seem to be name calling and not down to facts. He (Harriman) was addressing an AFL convention, and I suppose that kind of talk might have been popular there."

Senate Republican Leader Wherry of Nebraska said in Washington Harriman was trying to blame others for the administration's "betrayals." Wherry said Harriman was using "an old Russian dodge to charge one's own guilt to others."

Harriman departed from his prepared speech to say Sen. McCarthy (R-Wis) is "playing right into the hands of the communists."

McCarthy, called at an American Legion rally here last night for the resignation of Secretary of State Dean Acheson. He said General George C. Marshall, as secretary of defense, "will follow Acheson's orders."

President Truman, in a message to the convention, expressed confidence American workers will "go all out" to expand production "so we can arm ourselves and help arm the free world."

"In this way," he said, "we will make the United States and the democratic nations powerful enough to meet the challenge of communist imperialism that today is a world menace."

The message was read by George Meaney, secretary-treasurer of the union. It said labor groups are "absolutely right" in opposing the Taft-Hartley labor act.

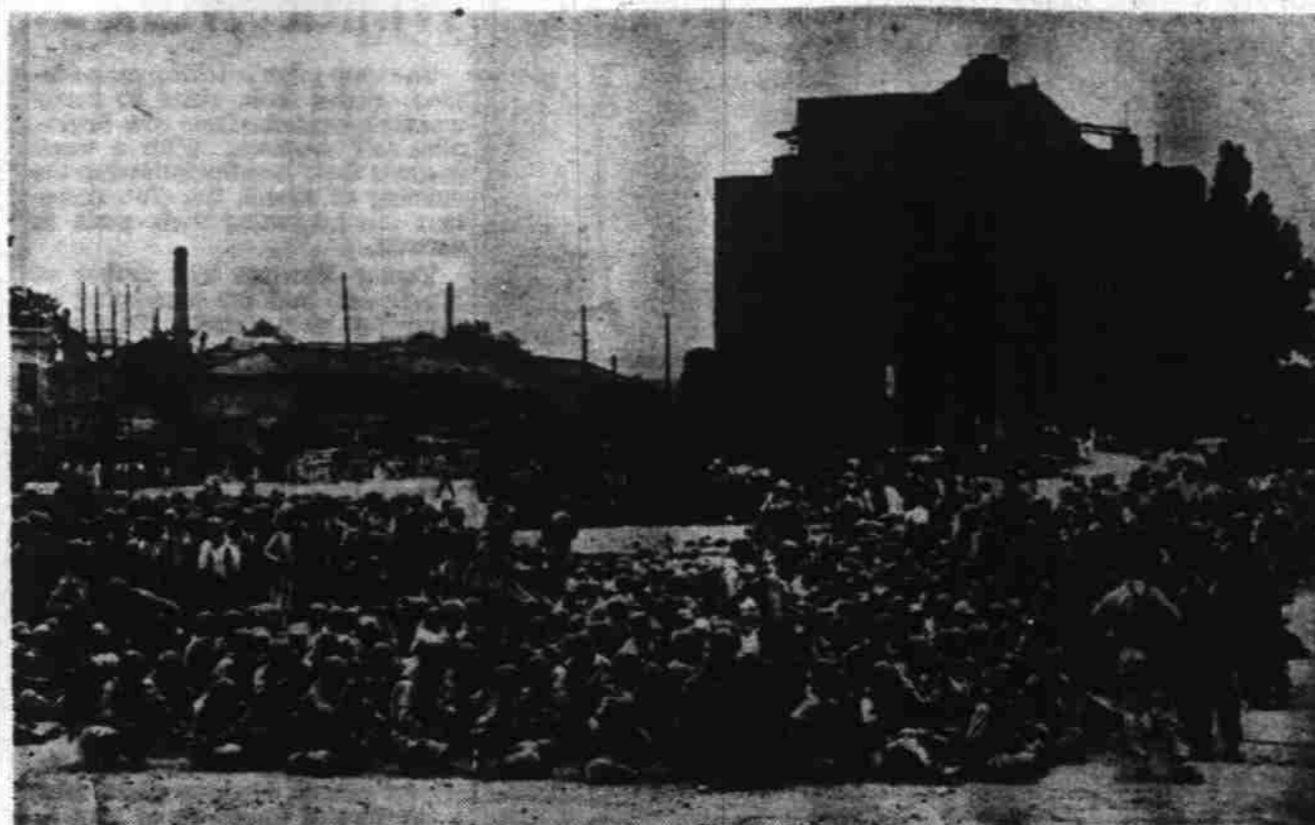
"It should be repealed in the interest of the working men and women," Mr. Truman said.

## Marble Spire to Honor La Grande's War Dead

LA GRANDE, Sept. 19—(AP)—A blue marble spire will be this city's memorial to its residents killed in wars.

The shaft, now being built, will be erected in Gar park in the city's cemetery. It will be dedicated May 21, 1951—armed forces day. The marble spire will replace a wooden marker, and will be paid for from voluntary contributions.

## South Koreans Move to Front in New Drive



TAEGU, Sept. 19—South Korean soldiers, fully equipped for battle, wait in front of Taegu railroad station for transportation to nearby front. United Nations soldiers were on the move along the southern front today in attempt to break through Red lines on offensive supporting Inchon landings. (AP Wirephoto).

## Dakota Slates 2,150-Mile Mercy Flight

EDMONTON, Alberta, Sept. 19—(AP)—A ski, wheel and jato-equipped Dakota aircraft will take off tomorrow on the longest mercy flight in the history of the R.C.A.F.

A request for medical assistance and possible evacuation of Charles Leroy Havens, federal transport department employee at Eureka Sound weather station, 680 miles south of the North Pole, was received today at north west air command headquarters. Havens is reported suffering from a hand infection that has not responded to treatment.

Eureka sound weather station lies more than 1,500 miles north of Churchill, Man. To reach it,

the Dakota will fly a route of approximately 2,150 miles via Baker lake and Resolute Bay in the northwest territories.

With the exception of Resolute Bay, the weather along the route is expected to be generally fair but zero and sub-zero temperatures are forecast.

Reports from Eureka indicate the aircraft may be able to make a safe landing on an improvised snow-covered runway. If this is done, the jato—jet assisted take-off equipment—will be used to become airborne again.

Should the aircraft be unable to land, however, it is proposed to parachute three men to give medical assistance—a possibility which may result in their isolation for an indefinite period until conditions are suitable for their evacuation.

Japan shipped more than 1,000,000 luffa gourd sponges a year to the U. S. before the war.

## BLACKBERRIES WANTED

(Wild or Cultivated)

We Pay **13¢**

Honeywood Distilleries, Inc.

501 S. 14th

Ph 3-6628

## Loot Recovered with Arrest of Portland Pair

PORTLAND, Sept. 19—(AP)—Police recovered some \$10,000 worth of silverware, linens and other articles, many identified as stolen after arresting a man and a woman in an apartment here today.

The couple, Udell M. Chase, 33, and Helen Edna Arola, 38, denied ownership of the articles. They were held on a morals charge pending an investigation. Chase was charged also with being an ex-convict in possession of firearms.

## Which Hearing Aid?

Beltone invites comparison. If an aid is needed, better try Beltone than wish you had.

First Choice of Thousands.

Write, call or visit office for FREE Demonstration in Home or Office.

Accepted by and Guaranteed by

**Beltone MONO-PAS**

One-Unit Hearing Aid  
Salem Headquarters  
James N. Taft & Assoc.  
228 Oregon Bldg.  
Ph. 2-4491

## STATUE ADDED

ST. LOUIS—(INS)—A celebrated statue by the great Italian Renaissance sculptor, Giovanni Montorsoli, has been added to the distinguished collection of the city art museum. The statue is that of a satyr, the roughish half-man, half-goat of Greek mythology.

This can be yours



EMPIRE **Lite-Rock** BUILDING BLOCK

SEND FOR FREE BOOKLET ON BLOCK CONSTRUCTION

... this can be yours, a home of beauty and charm. It will have wonderful insulation against heat and cold, excellent sound absorbing against disturbing noise and an absolute minimum of upkeep expense. These Lite-Rock blocks are fireproof and have a most attractive grey and tan.



Pumilite Block & Supply Co.  
Phone 2-5648  
Dallas Highway West Salem

EMPIRE BUILDING MATERIAL COMPANY

The Statesman, Salem, Ore., Wednesday, Sept. 20, 1950

## Toastmasters Club Elects William Hill

William Hill was elected president of the Salem Toastmasters club Tuesday night. Newly-elected officers will be installed Octo-

ber 3 for a six-months term. Others elected last night: John Martin, vice president; J. G. Tucker, secretary-treasurer; Donald Wooden, assistant secretary; Morris Buxton, sergeant-at-arms.

Koreans are fond of whale meat

SOUTHERN PACIFIC PROUDLY PRESENTS

# 2 great new streamliners



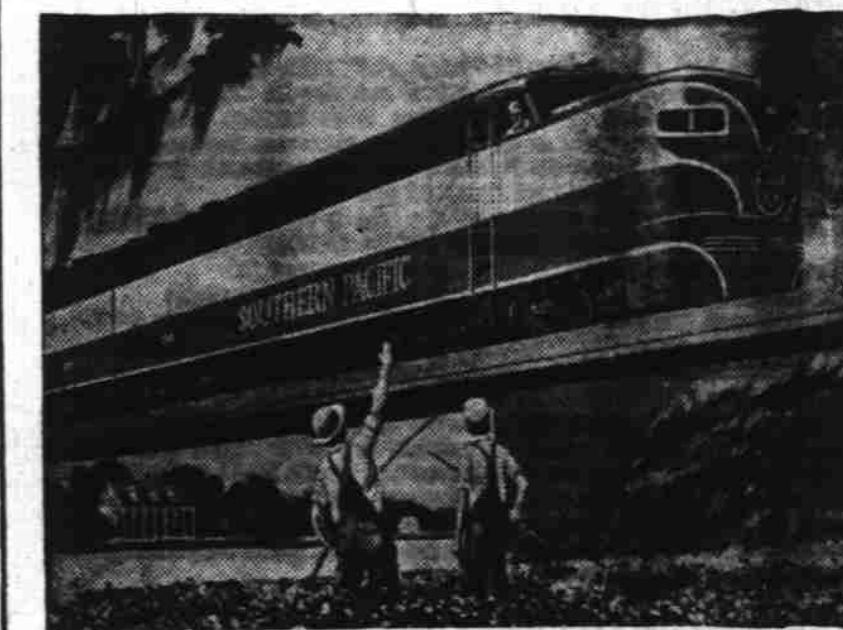
## NEW Cascade

PORTLAND-SAN FRANCISCO • 16½ HOURS

For the first time in history San Francisco is just overnight by luxury streamliner from Portland. The new Cascade leaves Portland at 4:45 p.m. (PST), arrives San Francisco at 9:15 a.m. (PST). Connects with streamliner San Joaquin Daylight arriving Los Angeles 6:30 p.m. (PST). Through streamlined Pullmans leave Seattle 12:30 p.m. (PST). Morning trains from Vancouver, B. C., and Spokane make connections.

The beautiful new Cascade Pullmans are all-roum, each with private washroom facilities. Except in roomettes, all washrooms are completely enclosed.

The unique Cascade Club provides two unbroken car-lengths of dining and club room where you'll enjoy famous Southern Pacific food, hospitable comfort and fun.



## NEW SUNSET LIMITED

LOS ANGELES-NEW ORLEANS • 42 HOURS

America's newest, finest, most beautiful transcontinental streamliner. Daily 48-hour service between Los Angeles and New Orleans. Convenient connection by fast streamliners from Portland. Moderate extra fare on Sunset Limited, but no other extra ticket cost to go or return this way on your roundtrip to New York from Vancouver, B. C., Seattle, Portland and most other western Oregon and Washington points.

Choice of luxurious all-room Pullman accommodations or extra comfortable new "Sleepy Hollow" Chair Car seats.

The new Sunset Limited is all new. From its "magic stop" brakes to its "leather touch" doors, every feature will delight you. Built by Budd, to S.P.'s own specifications, this great streamliner is \$15,000,000 worth of luxury on wheels.

For additional information and reservations on these and other great S.P. trains, ask at any S.P. ticket office or see your local rail or travel agent.

**S.P.** The friendly Southern Pacific

G. A. LARSON, AGENT  
3-9244



you're looking at what you're looking for

# PLYMOUTH

PACKED WITH VALUE AND READY TO PROVE IT

What do you look at when you buy a new car? You look at features that help make a car easy to handle, comfortable to ride in, safe to drive—and with operating expense that makes a Scotchman smile.

What do you look for when you buy a new car? You look for the best possible transportation you can buy with the money you have to spend.

Go to your nearby Plymouth dealer and look at the features\* of the new Plymouth. Then drive this great new car and see for yourself how these features combine to give you the best dollar-for-dollar transportation value.



\* Only Plymouth—in the lowest-priced field—offers you the convenience of Ignition Key Starting and Automatic Choke • the performance of 97-horsepower engine with 7.0 to 1 compression ratio • the smooth, sure steps of Safe-Guard Hydraulic Brakes • the blowout protection of Safety-Rim Wheels • and many other features not found even in some cars costing hundreds of dollars more.

PLYMOUTH Division of CHRYSLER CORPORATION, Detroit 21, Michigan