

Sale Prices Effective Through Sat., Feb. 11
We reserve right to limit!



DEL MONTE, LIBBY'S OR CASTLE CREST
PEACHES
No. 2 1/2 Can 19c

DEL MONTE
CORN
Fancy Cream Style
Golden Bantam No. 303 Cans 2 for 25c

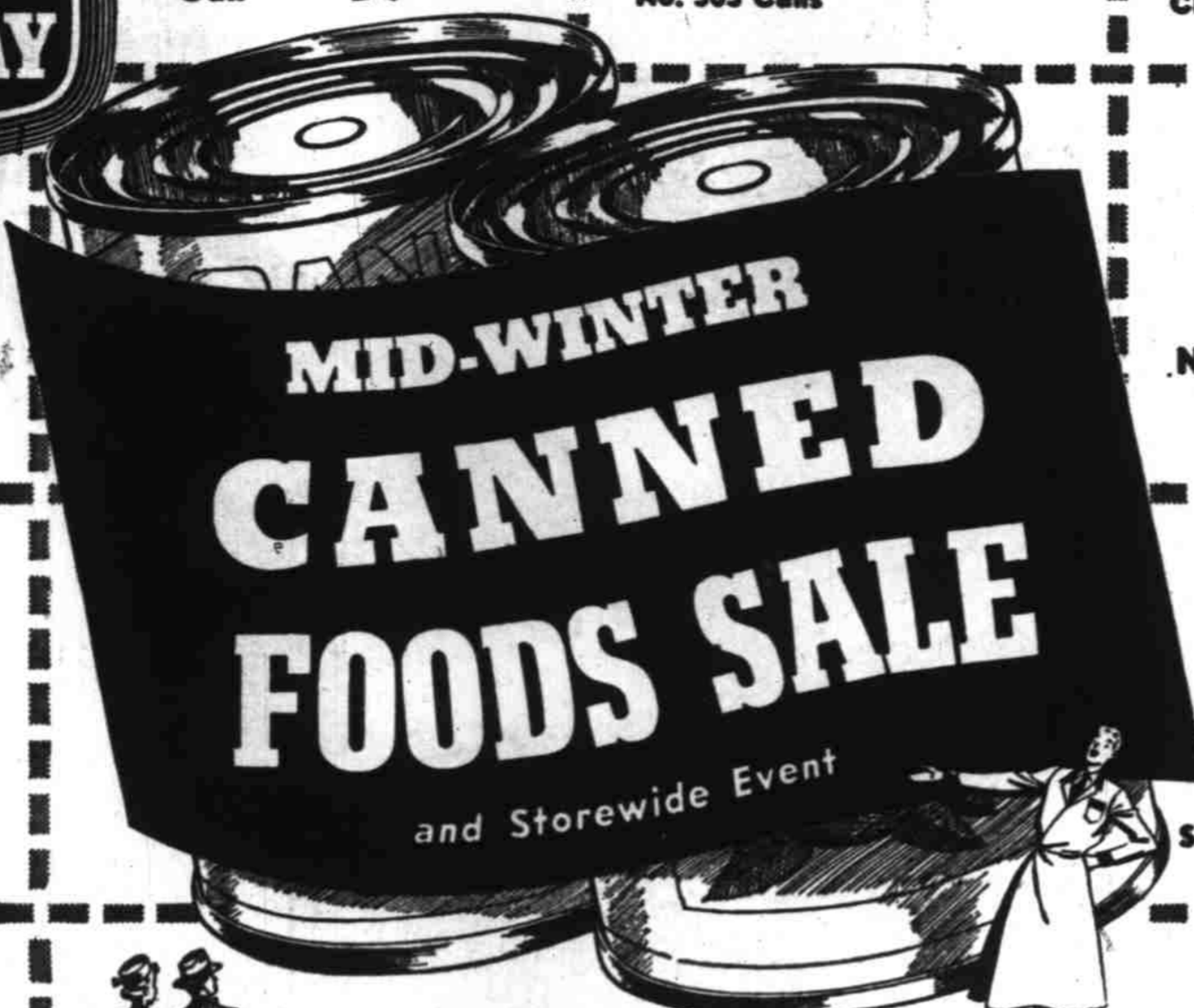
WHITE STAR
TUNA
Bite Size No. 1/2 Can 29c
Torpedo Brand No. 1/2 CHUNK TUNA can 25c

GARDENSIDE BRAND
CORN
Not the best quality but a very acceptable grade of cream-style golden bantam corn—your satisfaction guaranteed.
NO. 2 CAN 10c

VALLEY GOLD
Apricots
No. 2 1/2 Can 19c

HOSTESS DELIGHT
FRUIT COCKTAIL
No. 2 1/2 can 29c
Libby's, No. 303 can, 19c

SANTIAM
Fancy Cut Green
BEANS
No. 2 Can 19c



Canned Fruits, Vegetables, Juices, Sea Foods, Meats—canned and other foods of all kinds—thousands and thousands of cases from the country's best-producing areas are included in this first great Safeway Sale of the Year. Now is the time to check your food cupboards, fill in the empty spaces and load up with values like these—



SUGAR BELLE
Fancy Sugar
PEAS
No. 303 Cans 2 for 25c

BELL BUOY
TUNA
Fancy No. 1/2 Solid Pack Can 33c

GARDENSIDE GREEN
BEANS
Truly a spectacular buy for cut green beans of this quality. Good tasting. Buy several cans. No. 2 cans 2 FOR 25c

Misc. PEAS-CORN
GARDENSIDE PEAS No. 303 Can 10c
DEL MONTE PEAS 303 Can 18c
NIBLETS Whole Kernel CORN 12 Oz. Can 17c
COUNTRY HOME CORN 303 Can 14c
Green Giant Peas—No. 303 Can 2 for 25c

Your Choice—All One Kind or Assorted

- Apricot Juice LIBBY'S 12-oz. can
- Prune Juice SUNSWEET 12-oz. can
- Butter Beans SMITH No. 300 can
- Sliced Beets CARNIVAL No. 2 can
- Diced Carrots MARION No. 2 can
- Tomato Soup RANCHO 10 1/2-oz. can
- Pork & Beans DENNISON'S No. 1 can
- Kidney Beans SMITH No. 1 can
- Chili Beans SMITH No. 300 can
- Spaghetti SMITH No. 1 can
- Sardines TEMPEST MAINE No. 1/4 can
- Kippered Snacks No. 1/4 can

3 CANS FOR 25c

- Tomatoes, Del Monte No. 2 can 23c
- Tomatoes, Gardenside No. 2 1/2 can 19c
- Spinach, Emerald Bay No. 2 1/2 can 19c
- Sweet Potatoes, Taylor No. 3 can 23c
- Veg-All, Larsen's No. 303 can 17c
- Sauerkraut, Columbia No. 2 1/2 can 12c
- Pumpkin, Moonbeam No. 2 1/2 can 2/15c
- Green Beans, Briargate No. 2 can 21c
- Whole Beets, Del Monte 303 jar 19c
- Lime Beans, Seaside (dry) No. 2 can 15c

- Tomato Juice, Sunny Dawn, 46 oz. 25c
- Tomato Juice, Libby's 47 oz. 27c
- V-8 Vegetable Cockkail 4 6oz. 37c
- Gerber Baby Food 3 tins 23c
- Carnation Milk, tall 2 cans 23c
- Cherub Milk tall can 10c

- Apricots, Libby's Whole 303 can 19c
- Pie Cherries, Honeybird pitted 2's 29c
- Grapefruit, Glenn-Aire fancy 2's 23c
- Peaches, Halves O'Gold freestone 2 1/2 29c
- Pears, Highway No. 2 1/2 can 25c
- Pears, Del Monte No. 2 1/2 can 30c
- Pineapple, Libby's crushed No. 1 2/25c
- Plums, Monica whole 2 1/2 can 17c
- Cranberry Sauce, Ocean Spray 2/29c
- Apple Sauce, Lakemead No. 2 can 15c

- Apple Juice, Hood River, qt. bot. 19c
- Grape Juice, Church's qt. bot. 41c
- Grapefruit Juice 46-oz. can 39c
- Blend. Juice, blend o'gold, 46-oz. 35c
- Orange Juice, Full O'Gold, 46-oz. 39c
- Pineapple Juice, Dole, No. 2 2 for 29c
- Pineapple Juice, Libby's 46-oz. 39c

- Pork & Beans, Dennison's 2 1/2 can 17c
- B&M Baked Beans 28 oz. size 31c
- Rice Dinner, Sylmar No. 300 can 19c
- Roast Beef, Libby's 12 oz. tin 49c
- Vienna Sausage, Libby's 4 oz. tin 19c
- Corned Beef, Libby's 12 oz. tin 45c
- Corned Beef Hash No. 2 can 35c
- Swift's Prem, for Lunches 12 oz. 37c

- Mackerel, Propeller No. 1 can 19c
- Pink Salmon, Prince Leo, No. 1 can 39c
- Sardines, North Star, No. 1/4 tin 19c
- Small Shrimp, Shady River 5 oz. 39c
- Soap Powders, popular brands, Large size package 25c

White Star Tuna Fancy No. 1/2 Pack Can 35c

BEANS Small White, Great Northern, Idaho Red Pinto and Baby Limas 2 LBS. 25c

FLEET MIX The New Biscuit Mix "Love at First Bite" Pkg. 36c

Edwards Coffee Freshen By Days Lb. 73c 2-Lb. can 1 1/4

Grade A Butter Meadow Wood lb. 69c

- Breakfast Gems
- Coffee, Nob Hill lb. bag 69c, 2 lb. 1.37
 - Coffee, Airway, lb. bag 65c, 2 lb. 1.29
 - Rice Krispies, Kellogg's 8 oz. pkg. 19c
 - Wheaties, giant package 22c
 - Shredded Wheat, Nabisco 12 oz. 16c
 - Cheerios, oat cereal 2 pkgs. 29c
 - Quaker Oats 3 lb. pkg. 35c
 - Cream of Wheat 28 oz. pkg. 30c
 - Zoom, instant cereal lb. pkg. 23c
 - Pancake Flour, Suzanna 3 1/2 lb. 43c
- EGGS 43c

GARDEN-FRESH PRODUCE FEATURES

GRAPEFRUIT
Wide Juicy Sections—Texas white Easy to Spoon Out 8-lb. bag 77c

Florida Grapefruit Lb. 11c

Potatoes U.S. No. 1 10 lb. sac 49c

Apples Red Delicious 2 lbs. 25c
Winesaps 5 lbs. 49c

- Oranges Florida 5 lb. bog 55c
- Green Cabbage lb. 9c
- Carrots California lb 9c
- Lettuce California lb. 18c
- Tomatoes 14 oz. tube 22c

- Peanut Butter, real roast 2 lb. jar 63c
- Syrup, Lumberjack 24 oz. bottle 37c
- Mayonnaise, Best Foods pt. jar 37c
- Kraft Miracle Whip qt. jar 49c
- Jell Well, 6 flavors 4 pkgs. 25c
- Jello-O Sparkling Dessert 4 pkgs. 29c
- Royal Puddings, your choice 4 pkgs 29c
- Snowflake Soda Crackers 2 lb. 45c
- Ritz Crackers 1 lb. pkg. 29c

- Dried Prunes 4 lb. pkg. 59c
- Seedless Raisins 2 lb. pkg. 29c
- Gold Medal Flour 50-lbs. \$3.99
- Kitchen Craft 50-lbs. \$3.99
- Flour, Harv. Blsm. 50-lbs. \$3.29
- Cheese, Tillamook, 2 lb. loaf \$1.39
- Cheese, Chatham, mild lb. 49c
- Cheese, Velveeta 2 lb. loaf 79c
- Cheese, Fireside 2 lb. loaf 75c
- Kraft Dinners Pkg. 13c

- Catsup, Taste Tells, 14 oz. bottle 15c
- Heinz Ketchup 14 oz. bottle 25c
- Margarine, Nucoa lb. pkg. 28c
- Dalewood Margarine, lb. pkg. 23c
- Wesson Oil qt. size 55c
- Shortening, all brands 3 lbs. 69c
- Shortening, Royal Satin 3 lbs. 65c
- Sugar, brown or pwwrd. lb. 12c
- Rice, Zenith, Showboat 3 lbs. 45c

- White King Gran. Soap 46 oz. 53c
- Whisley's Soap 10-bar asst. 59c
- White Magic Soap reg. pkg. 23c
- White Magic Soap giant pkg. 45c
- Clorox or Purex 1/2 gal. jug 24c
- White Magic Bleach 1/2 gal. 23c
- Dog Food, Playfair 3 cans 29c
- Friskies, cubes or meal 5 lb. 69c
- Puss'n Boots Cat Food, 8 oz. 3 cans 25c
- Cigarettes, popular brands ctn. 1.45

SAFEWAY WASTE-FREE, GUARANTEED MEATS



SMOKED HAMS lb. 49c
Del Monte—Morrell's or Central—Top Quality

Sliced BACON, lb. 35c

Smoked Picnics, lb. 33c

- Rib Roasts per lb. 69c
- Rib Steaks per lb. 69c
- Ground Beef lb. 39c
- Fryers Pan Ready lb. 59c
- Pork Rib or Loin End Roast lb. 43c
- Pork Chops Center cuts lb. 65c
- Pork Sausage lb. 45c
- Turkeys Waste-free Meats lb. 59c

FOWL Eviscerated, Pan Ready lb. 49c

SAFEWAY