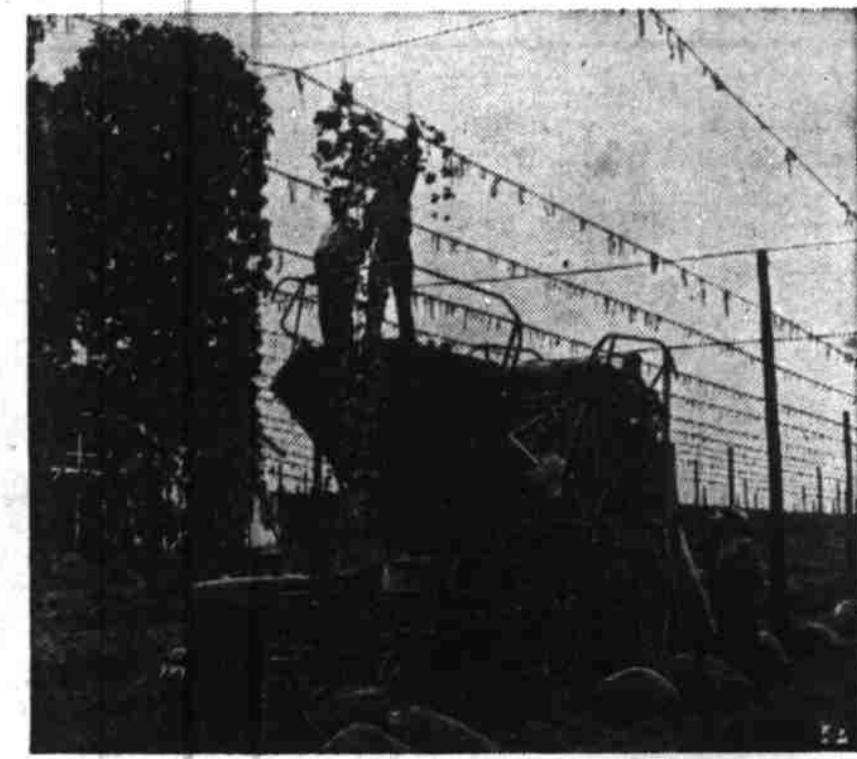


Mechanical Hop Picker Takes Employment Away from Indians in Washington Valley

By James Hutchison
AP Newstextures

YAKIMA, Wash. — The white man's machine age has driven the Indian from another of his stamping grounds. Mechanical hop picking machines have taken over in this fertile irrigated valley where 40% of the nation's hops are grown.



A new type of mechanical hop-picker has driven thousands of Indians from employment in the Yakima valley in Washington.

Thousands of Indians pitched their tepees in the hop fields each fall in the pre-machine era. Average annual employment was 30,000.

Clean Job Done

Hop authorities say close to 80,000 workers would be needed to harvest the increased acreage of today and match the clean job hop harvest employment in the valley during the 1949 season was down to about 6,000. An estimated 2 per cent of the region's 13,000 acres of hops is all that was hand-picked this year.

The valley now has 150 or more portable harvesters and about 50 or more of the higher producing stationary machines. The portables run through the field, between rows, gobbling up the vines and sprouting out the stems and leaves.

Crop Estimated

Estimates of the 1949 Yakima valley hop crop run from 90,000 bales by Marlowe Lesh, president of the Washington State Hop Producers association, to 105,000 in the U.S. government crop report. Estimates of the value to growers run up to \$11,000,000.

District Meet At Mt. Angel Postponed

Adjutant Mike Welton stated the post now had 125 paid up members and working hard to hit the quota of 168 by December 8. The latest figures from headquarters show Mt. Angel as having the best membership percentage in the district at this time.

Some dolls left over from the indoor shoot were turned over to the Auxiliary for presentation to the Christmas Gift Shop at the Veterans hospital in Portland.

Card showing 25 years of continuous service in the Legion were presented to R. T. Bisenius and Joseph Erwert and 30-year cards are being held for presentation to Merton O. White and Joseph E. Michels. Welton also reported two Legionnaires in the Silverton hospital are Anthony C. Bielenberg and Wendell E. Lee.

A request from Father John Cummins, former Mt. Angel pastor and now chaplain at the Veterans Domiciliary Center at Camp White near Medford, for holly for wreaths was granted by a vote of the post. A committee consisting of Comrades Bourbonnais, Welton and Gene Hoffer was appointed to gather sufficient holly for 60 wreaths.

Valley Obituaries

Fred Knight
SILVERTON — Fred Knight, 81, died Thursday night at his home in the Evergreen district near Silverton. He was born June 27, 1868 in Michigan and came here 55 years ago.

He was a member of Home Lodge, Knights of Pythias and a prominent member of Waldo Hills community club.

Surviving are two daughters, Mrs. Edith Kaiser and Mrs. Ethel Overos, both of Silverton; also five grandchildren. Services will be Sunday at 2:30 p.m. from the Ekman funeral home with the Rev. Ben F. Browning officiating. Interment will be in Bethany cemetery.

Breithaupt's
Salem's Oldest Name in Flowers
Paul Heath
Helen Breithaupt Heath
447 Court St. Ph. 3-9179

4660 SIZES 34-52

Here's the dream-gown you've been seeking! With slender lines, slim waist-tucks, it fits well, is so easy to make. Sleeveless, long sleeves, or cap-sleeves.

Pattern 4660: 34, 36, 38, 40, 42, 44, 46, 48, 50, 52. Size 36 takes 3 1/2 yds. 39-in. (Flower transfer inc.)

This pattern, easy to use, simple to sew, is tested for fit. Has complete illustrated instructions.

Send TWENTY-FIVE CENTS in coins for this pattern to ANNE ADAMS, care of The Oregon Statesman, Pattern Department, P.O. Box 6710, Chicago 80, Ill. Print plainly YOUR NAME, ADDRESS, PHONE, SIZE, STYLE NUMBER.

Send Fifteen Cents more for our Anne Adams Fashion Book. Pages of patterns for the whole family, gifts, too. Free patterns of a hat—a head-busting helmet—is printed in the book.

FHA State Finance Co.
FHA Loans
Long-Time Farm Loans
Finance 5-216 and 3-222
Personal and Auto Loans

Don't Neglect Slipping FALSE TEETH
Do false teeth drop, slip or wobble when you talk, eat, laugh or sneeze? Don't be annoyed and embarrassed by such handicaps. FASTEETH, an alkaline (non-acid) powder to sprinkle on your plates, keeps false teeth firmly set. Gives confident feeling of security and added comfort. No gum-remover, sticky taste or feeling. Get FASTEETH today at any drug store.

DRS. CHAN & LAM
CHINESE HERBS
241 North Liberty

Upside above Decker's, 237 N. Liberty. Office open Saturday only 10 a.m. to 1 p.m. 7 to 9 p.m. Consultation, blood tests and X-ray tests are free of charge. Practiced since 1917.

300 Personal
310 Meeting Notices
312 Lost and Found
316 Personal
400 Agriculture
402 Livestock
404 Poultry and Rabbits
408 Pets
412 Fruit and Farm Produce
414 Farm Equipment
450 Merchandise
451 Machinery and Tools
455 Household Goods For Sale
458 Wanted, Household Goods
458 Building Materials
476 Fuel
478 Fuel
602 Help Wanted
604 Help Wanted, Male
606 Help Wanted, Female
610 Sales Persons Wanted

300 Real Estate
806 Houses For Sale
806 Houses For Sale

AMITY OES Chapter District Meeting Host
AMITY — Amity Chapter, Order of Eastern Stars, was host to five chapters from Yamhill, Sheridan, Dayton, Newberg and McMinnville on Friendship night this week.

Mrs. Naomi Hewitt, worthy matron, and Thomas Hewitt, worthy patron, presided at the meeting. Mrs. James L. Payne gave two readings and Louise Stout sang several selections during the entertainment program.

Today's Pattern
Country killed meats: Veal: Top quality, 33-35 lb; other grades, 25-32 lb. Pork: Choice, 25-30 lb; other grades, 20-25 lb. Chicken: 10-12 lb; other grades, 8-10 lb. Turkey: 12-15 lb; other grades, 8-10 lb. Rabbit: 4-5 lb. Lamb: 10-12 lb; other grades, 8-10 lb. Beef: Choice, 12-15 lb; other grades, 8-10 lb. Mutton: Good, 7-8 lb; down, 5-6 lb. Pork cuts: Loin, No. 1, 8-12 lb; No. 2, 6-8 lb; U.S. No. 3 mixed, 5-6 lb; spareribs, 4-5 lb; carcasses, 24-25 lb. Wool: Coarse, valley-medium grades, 45 lb. Country killed meats: Veal: Top quality, 33-35 lb; other grades, 25-32 lb. Pork: Choice, 25-30 lb; other grades, 20-25 lb. Chicken: 10-12 lb; other grades, 8-10 lb. Turkey: 12-15 lb; other grades, 8-10 lb. Rabbit: 4-5 lb. Lamb: 10-12 lb; other grades, 8-10 lb. Beef: Choice, 12-15 lb; other grades, 8-10 lb. Mutton: Good, 7-8 lb; down, 5-6 lb. Pork cuts: Loin, No. 1, 8-12 lb; No. 2, 6-8 lb; U.S. No. 3 mixed, 5-6 lb; spareribs, 4-5 lb; carcasses, 24-25 lb. Wool: Coarse, valley-medium grades, 45 lb.

300 Personal
310 Meeting Notices
312 Lost and Found
316 Personal
400 Agriculture
402 Livestock
404 Poultry and Rabbits
408 Pets
412 Fruit and Farm Produce
414 Farm Equipment
450 Merchandise
451 Machinery and Tools
455 Household Goods For Sale
458 Wanted, Household Goods
458 Building Materials
476 Fuel
478 Fuel
602 Help Wanted
604 Help Wanted, Male
606 Help Wanted, Female
610 Sales Persons Wanted

470 Merchandise
458 Building Materials
476 Fuel
478 Fuel
602 Help Wanted
604 Help Wanted, Male
606 Help Wanted, Female
610 Sales Persons Wanted

470 Merchandise
458 Building Materials
476 Fuel
478 Fuel
602 Help Wanted
604 Help Wanted, Male
606 Help Wanted, Female
610 Sales Persons Wanted

470 Merchandise
458 Building Materials
476 Fuel
478 Fuel
602 Help Wanted
604 Help Wanted, Male
606 Help Wanted, Female
610 Sales Persons Wanted

470 Merchandise
458 Building Materials
476 Fuel
478 Fuel
602 Help Wanted
604 Help Wanted, Male
606 Help Wanted, Female
610 Sales Persons Wanted

470 Merchandise
458 Building Materials
476 Fuel
478 Fuel
602 Help Wanted
604 Help Wanted, Male
606 Help Wanted, Female
610 Sales Persons Wanted

470 Merchandise
458 Building Materials
476 Fuel
478 Fuel
602 Help Wanted
604 Help Wanted, Male
606 Help Wanted, Female
610 Sales Persons Wanted

470 Merchandise
458 Building Materials
476 Fuel
478 Fuel
602 Help Wanted
604 Help Wanted, Male
606 Help Wanted, Female
610 Sales Persons Wanted

600 Real Estate
806 Houses For Sale
806 Houses For Sale

OHMART & CALABA, REALTORS
BUSINESS LOCATION ON STATE STREET
Large lots, 60 ft. frontage, comfortable 2 bedroom home, space in front for building — \$6300.
NEARLY NEW — NORTH OF TOWN
A good buy in a modern 2 bedroom home, near the Ketter School — large lot — Only \$8500.
\$1000 DOWN — NORTH COTTAGE ST.
2 bedrooms, basement oil furnace, fireplace — \$10300 down, balance \$9500 a month — full price \$18800.
3 BEDROOMS — NORTH 23rd STREET
A dandy home, nearly new, complete with fireplace and patio, insulated and weatherstripped — extra large lot — good view — \$11,500.
MANBRIN GARDENS
We have several good buys in 2 to 4 bedroom homes in beautiful Manbrin Gardens — very close to city financing — very low in down payment.
WONDERFUL FOR LARGE FAMILY
6 large bedrooms, very spacious living-room and dining-room, fireplace, auto heat, basement — within 6 blocks of court house — \$14,000. Owner will consider small home as part payment.
NEED A TRAILER HOUSE?
Just \$900 for this 16' Silver Lark Trailer house, 1947 model, accommodates 4, fully equipped and in excellent condition.

600 Real Estate
806 Houses For Sale
806 Houses For Sale

600 Real Estate
806 Houses For Sale
806 Houses For Sale

600 Real Estate
806 Houses For Sale
806 Houses For Sale

600 Real Estate
806 Houses For Sale
806 Houses For Sale

600 Real Estate
806 Houses For Sale
806 Houses For Sale

600 Real Estate
806 Houses For Sale
806 Houses For Sale