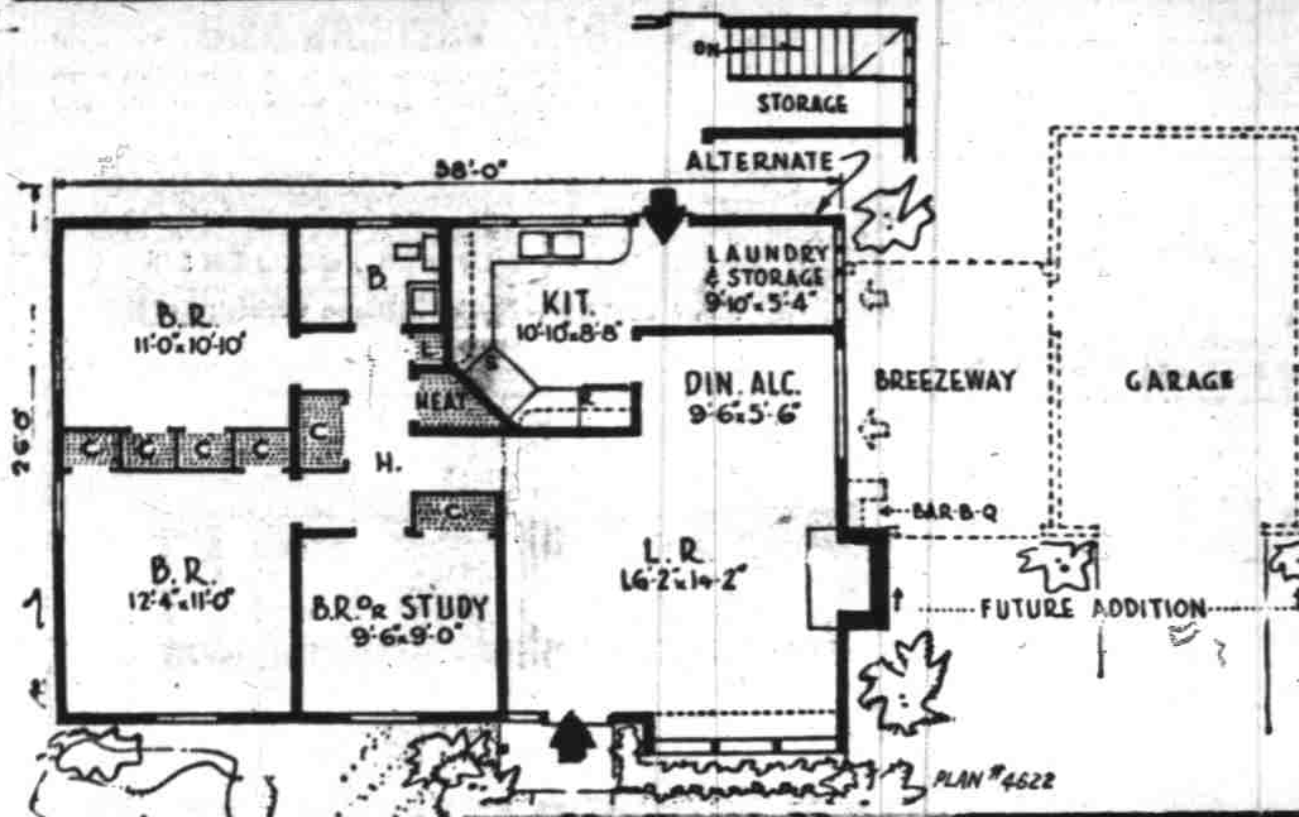


# HOMES FOR AMERICANS



**AP Newfeatures**  
Economy of construction is possible with this plan by virtue of its rectangular design. The house can be built with or without a basement. Garage, breezeway and outdoor barbecue fireplace can be added later. An extra large living room is a feature. This is Plan 4622 by L. A. Kauscher, 144 Himrod St., Brooklyn 21, N. Y. It covers 988 square feet and has a low roof pitch keeping cubage at a minimum.



## Bilking of Salem Man of \$1100 Leads to Arrest in Portland of Suspect in Car Theft Cases

The arrest in Portland of Edward Maynard Sharlow, 28, climaxed a nine-months investigation of a sale of a stolen car in which a Salem man was bilked out of \$1100, it was disclosed by state police Thursday.

Officer John Williams, active throughout the long probe, said also Sharlow had admitted selling four other cars under similar circumstances, including one at Eugene where he and A. Gene Evelyn Scheiber, 25, of Salem, are charged with obtaining money under false pretenses.

Sharlow was picked out of a Portland police lineup Wednesday by James Jolley, 25, of Salem, Oregon State college student, as the man who last February sold him for \$1100 a car which had been stolen from a Vancouver, Wash., used car lot, state police reported. The title which accompanied the car had been taken from a Portland physician, Officer Williams said. Jolley never recovered the money he paid.

Both Sharlow and the woman, who also was taken into custody in Portland, are to be taken to Eugene first for a hearing. State police said no car-theft charges had been preferred but that federal agencies were investigating. The cars involved both at Eugene and Salem came from out-of-state.

Williams said Sharlow operated this way—he would read for-sale advertisements of cars; visit prospective sellers, and while in conversation with them would pilfer the car's title; then he would obtain a car which corresponded closely to the title, and proceed to some other town to sell it—posing

## Sheriffs Plan Meet in Salem

Salem probably will be the site of the Oregon Sheriffs' association convention in December, Marion county Sheriff Denver Young said Thursday.

Members of the group's executive committee will meet here this afternoon to draw plans. They are Sheriffs M. R. Calhoun of St. Helens, president; Claude McCauley of Bend, Allen Burch of Tillamook and Fred Reakacker of Oregon City. In recent years the annual conventions have been at Portland.

## British Spokesmen Split Over Elizabeth's Attack on Divorce

**By Harold K. Mills**  
LONDON, Oct. 20 (AP)—Specialists on British marriage problems split up today over Princess Elizabeth's attack against evils of divorce. Another problem involving British morals was aired publicly when the labor government promised to help outlaw slot machine dispensing contraceptives.

Britain's Marriage Reform Committee deplored a warning by Princess Elizabeth to the Mothers' union Tuesday that divorce threatens the stability of British family life.

"We have observed the statement with regret," said R. S. W. Pollard, chairman of the committee of sociologists and lawyers seeking to liberalize British divorce laws.

But the Marriage Guidance Council, whose 100 branches throughout England attempt to build happy marriages, defended the royal speaker.

"Very welcome," said A. J. Brayshaw, its general secretary. He said what Princess Elizabeth told the Mothers' union was "very much to the point, and we would like to hear more speakers like her."

Buckingham palace declined comment. Nothing further was heard on the subject from the princess, 23-year-old heiress apparent to the British throne who is married and a mother herself.

**Says Point Missed**  
Pollard, himself a happily married lawyer, said the princess missed the point of the problem. Divorce and separation are not in themselves responsible for the evils she discussed, he insisted. "It is the causes, such as inadequate housing and unstable partners, which lead to the break-up of marriages that are responsible for some of the bad effects to which the princess referred," Pollard said.

The Rt. Rev. Geoffrey Fisher, archbishop of Canterbury and head of the Church of England, said the proposed ban on contraceptive slot machines "is a long step in the right direction."

He and other church leaders have campaigned recently against contraceptive slot machines because they make the devices readily available to young persons.

**ATOMIC NAVY**  
LONDON—(INS)—The first atomic age British fighting ships—two sleek, flush-deck vessels with low bridge and streamlined superstructure—are to be laid down next year as Britain's answer to high-speed submarines.

**NO DIFFERENCE**  
BLOOMFIELD, N. J.—(INS)—Scientists insist that white light penetrates fog just as well as amber light, but motorists polled on the subject favor amber over white fog lights by more than ten to one.

day ruled the injuries did arise while Schmitz was working during the normal course of his job as credit manager.

## Court Orders State Accident Claim Paid

A claim for compensation twice rejected by the state industrial accident commission was ordered paid to Charles E. Schmitz, manager of Credit Bureau, Inc., in Salem, in Marion county circuit court Thursday.

Schmitz had applied for compensation for injuries he incurred when a bale of hay fell on him Dec. 22, 1948, while he was at the Valley Farm store on Silverton road near Lancaster drive.

His claim was denied by the commission both at a hearing in February and at a re-hearing later in the year. The commission rejected the claim on the grounds that his injuries did not arise out of his course of employment.

Judge George R. Duncan Thursday

## Marlin M. Fox Nominated by Jersey Club

Marlin M. Fox, prominent Jersey breeder of Molalla, has been nominated for the presidency of the Clackamas County Jersey Cattle club of the Oregon Jersey Cattle club for 1950, the county club's president, C. E. Finnegan announced Thursday.

In further balloting John Hobin, Coos Bay, was nominated for state vice-president, incumbent, Jens F. Svinth, Grants Pass, was chosen to continue as secretary.

Marlin M. Fox was president of the Clackamas County Jersey Cattle club during 1942-43 and under his leadership the club won the national Jersey Bulletin-Accomplishment Cup award for 1942.

Fox began his career as a Jersey breeder when he acquired two pedigreed Jersey heifer calves in 1934.

In 1942 they purchased the Al Sawtell farm near Molalla, and during the next six years their herd expanded in numbers and

quality until, in 1944, they had the highest herd classification rating on the Pacific coast—that of 88-31% Early in that year they sold the herd and farm to Dawson & Broderick, but retained a few heifer calves as a nucleus for another herd. Later in 1948 they purchased a farm on the Molalla river near Liberal, where they

now reside and where their new herd is well under way. Individual voting for these three officers will be conducted between now and the end of this year.

When the telephone was first being developed by Alexander Graham Bell it was known as the "harmonic telegraph."

## Purple Heart Sale Today

Purple hearts will be sold on the streets of Salem Saturday.

The purple hearts will be in the form of violas. Proceeds will go to the Military Order of the Purple Heart. Sales headquarters will be at R. L. Elstrom co. where volunteers are to report at 8:30 a.m.

Organizations that have volunteered to sell include the Gold Star Mothers, War Mothers, Catholic Daughters of America and the Disabled American Veterans auxiliary.

### Give Your Kitchen A NOTE

hand painted ename cover

beautiful, all-metal, 13" cover with genuine freehand painted design. Complete with 14" glass tray. **3.75**

paper towel holder Handy—and hand painted! Sturdy—and streamlined! Standard roll hearts easily and freely. **3.25**

wax paper holder Keeps paper always convenient. No more hunting or shooing. **1.65**

start your complete set now! Genuine Ransburg Hand Painted Pantryware fills practically every kitchen need. Matching, all-metal pieces in a choice of five, gay background colors. Start with a few... add a piece at a time.

**THE MODERNE**  
305 Court Phone 3-3608

## LET'S SWAP 25<sup>00</sup>

WE WILL ALLOW

Trade in value on any type heater you may have—be it wood—oil—electric—or corn cob—on a purchase of these

### NORGE OIL HEATERS

Solid Comfort from Liquid Fuel

**NORGE HOME HEATER**

This compact unit, using inexpensive fuel oil, is just the thing for extra or occasional heat in any home, or as the sole source of heat in small houses, bungalows or garages.

Above Model - F. H. 55  
Reg. 119.50 Trade-in 25.00 **NOW 94.50**

Model F. H. 55  
Reg. 99.50 Trade-in 25.00 **NOW 74.50**

**OPEN FRIDAY NIGHT UNTIL 9**

FOR YOUR SHOPPING CONVENIENCE

**GEORGE E. ALLEN HARDWARE**

236 N. COMMERCIAL ST. • SALEM, OREGON

## HERE'S NASH FOR 1950! AIRFLYTE CONSTRUCTION... UP TO 30% MORE MILES A GALLON! HYDRA-MATIC DRIVE AVAILABLE! AND NEW LOW PRICES TOO!

1950 Nash Airflyte Prices are \$73 to \$140 Lower

**ONLY \$1845.00**

DELIVERED HERE

Here is news that completely changes the picture on what your car dollar buys. In the 1950 Nash Airflyte you get new, finer, super-powered models—at prices from \$73 to \$140 less than last year!

**20.7% Less Air-Drag**  
Here is the beauty that splits the air with 20.7% less air-drag than the average new car—by scientific wind-tunnel tests at the University of Wichita.

**Stays New Years Longer**  
Nash alone has Airflyte Construction. It's a single, solid welded unit. It is rattle-proof, squeak-proof—has twice the rigidity for safety. It stays new years longer, costs less to maintain, and adds to re-sale value.

See the difference—in brilliant performance—in gasoline economy. The big

Nash Statesman delivers more than 25 miles to the gallon at average highway speed. You get Weather Eye Comfort... seats Twin-Bed wide... Nash coil-springing on all four wheels... curved, undivided windshield in all models. Compare Nash with any car at any price—for size, for comfort, for value.

**Nash AIRFLYTE**  
THE STATESMAN • THE AMBASSADOR  
Great Cars Since 1902

Nash Motors, Division of Ford Motor Corporation, Detroit, Mich.

**\*THERE'S MUCH OF TOMORROW IN ALL NASH DOES TODAY\***

## MARION MOTORS

333 Center Street - Salem

## You can't make a mistake when you bake a Cinch Cake

Easiest to make... finest flavor cake. Cinch Cake Mix comes fully prepared and contains all the quality ingredients delicious cakes require. You simply add water, mix and bake. The rich flavor and fine texture will bring you compliments galore.

**ADD ONLY WATER**

**Cinch CAKE MIX**

**4 DELICIOUS FLAVORS**  
DEVIL'S PUDDING  
GOLDEN  
WHITE  
SPICE

MILLIONS OF CAKES WITH NO MISTAKES